



2006 Fact Book

National Cancer Institute

2006 Fact Book

The information set forth in this publication is compiled and amended annually by the financial management staff of the National Cancer Institute and is intended primarily for use by members of the Institute, principal advisory groups to the Institute and others involved in the administration and management of the National Cancer Program. Questions regarding any of the information contained herein may be directed to the Financial Management Branch, National Cancer Institute, 9000 Rockville Pike, Bethesda, Maryland, 20892.

TABLE OF CONTENTS

Executive Summary	Fiscal Year 2006 Annual Report.....	iii
Organization	Director's Biography..... Former Directors of the NCI..... National Cancer Advisory Board..... Boards of Scientific Counselors and Advisors President's Cancer Panel Executive Committee Members NCI Director's Consumer Liaison Group..... Operational Organization Charts: National Cancer Institute Office of the Director OD I: Office of Management OD II: Office of Communications and Education OD II: Center for Strategic Scientific Initiatives OD III: Administrative Resource Centers OD III: Office of Centers, Training and Resources OD IV: Center to Reduce Cancer Health Disparities OD IV: Office of Budget and Financial Management OD IV: Office of Science Planning and Assessment Center for Cancer Research..... Division of Cancer Epidemiology and Genetics Division of Cancer Prevention..... Division of Cancer Control and Population Sciences..... Division of Cancer Treatment and Diagnosis..... Division of Cancer Biology Division of Extramural Activities.....	O-1 O-2 O-3 O-7 O-8 O-8 O-9 O-10 O-11 O-12 O-13 O-13 O-14 O-14 O-15 O-15 O-15 O-16 O-18 O-19 O-20 O-21 O-22 O-23
Cancer Statistics	Number of Deaths for the Five Leading Cancer Sites Relationship of Cancer to the Leading Causes of Death in the U.S. Estimated New Cancer Cases and Deaths..... The Cost of Cancer..... Average Years of Life Lost Per Person Dying of Cancer..... Five-Year Relative Survival Rates by Cancer Site..... Cancer Incidence Rates Cancer Mortality Rates Changes Cancer Incidence Rates by Race Cancer Mortality Rates by Race The Prevalence of Cancer	C-1 C-1 C-2 C-3 C-4 C-5 C-6 C-7 C-8 C-9 C-10
Budget Data	NCI Budget Program Structure Extramural Funds NCI Obligations by Mechanism..... Division Obligations by Mechanism NIH Management Fund, Service & Supply Fund and GSA Rent... Special Sources of Funds Funding for Various Research Areas.....	B-1 B-2 B-3 B-4 B-5 B-6 B-7 B-8

Extramural Programs	Research Project Grants:	
	Number of Awards	E-1
	Requested, Awarded	E-2
	Awards by Activity Code	E-3
	Activity Code Descriptions	E-4
	Cancer Centers	
	By State	E-5
	Specialized Programs of Research Excellence (SPORE)	E-6
	National Research Service Awards – Pre and Post Doctoral	
	Trainees	E-7
	Construction/Renovation Funding.....	E-8
Grant and Contract Awards by State	E-9	
Grant and Contract Awards by Country	E-10	
Institutions Receiving More than \$15,000,000 in NCI Support	E-11	
Historical Trends	Appropriations of the NCI	H-1
	Bypass Budget Requests	H-2
	Comparison of Bypass Requests and Appropriations of the NCI .	H-3
	Comparison of Dollars, Positions and Space.....	H-4
	Personnel Resources	H-5
	AIDS Funding History	H-6

This publication may be viewed on the World Wide Web by pointing a browser to the Financial Management Branch homepage on the National Cancer Institute's website: www.nci.nih.gov or www.cancer.gov.

Fiscal Year 2006 Annual Report

BUDGET IN REVIEW

This report provides a summary of the distribution of the Fiscal Year 2006 budget among the various National Cancer Institute (NCI) research programs and funding mechanisms, funding policies influencing grant awards, and comparisons with prior year allocations. Additional information on the NCI budget is accessible from the NCI Home Page (<http://www.cancer.gov>).

Summary

Funds available to the NCI in FY 2006 totaled over \$4.747 billion, reflecting a decrease of 1% and \$48 million from the previous fiscal year.

Fiscal highlights from FY 2006 include:

- Of the total NCI budget, 45% of the funds were allocated for Research Project Grants.
- The total number of Research Project Grants (RPGs) funded was 5,435.
- Approximately one-fourth of the RPGs awarded were new (Type 1) or competing renewal (Type 2) awards.
- 1,280 competing RPGs were funded.
- A third of the total NCI budget supported ongoing non-competing (Type 5) RPGs.
- R01 grants were funded to the 12th percentile.
- 263 grants – totaling \$96 million – were funded as Small Business Innovation Research (SBIR) and Small Business Technology Transfer (STTR) awards.
- Intramural Research was 14% of the total NCI budget in FY 2006.
- \$506 million –11% of the total NCI budget – was allocated for Cancer Prevention & Control.

Distribution of the Budget by Funding Mechanism for FY 2005 and FY 2006

Summary Points

Of the \$48 million decrease:

- \$4.2 million – or 9% of the decrease – occurred in the Research Grants budget mechanism.
- The total budget for Research Project Grant category decreased \$32 million.
- Within the RPG category, funds for competing grants and administrative supplemental grants decreased by \$26 million and the non-competing grants decreased by \$3.9 million.
- Funds for training and career development of current and future research scientists through Research Career Awards grew by 5.5%.
- The total budget for Cancer Centers, Specialized Centers (U54) and SPORes increased by 2.1%.
- Funds for Specialized Centers (U54) and Cancer Centers increased \$7.9 million and \$9.7 million, respectively.
- Clinical Cooperative Groups funds increased 2.2%, while R&D contracts decreased 1%.
- Funds for Cancer Prevention and Control and Intramural Research fell \$26 million and \$24 million, respectively.
- During FY 2006, NIH and DHHS Assessments increased a total of \$6 million, including a \$1.5 million increase for Program Evaluation and a \$1.9 million increase for the Management Fund.

**NCI Dollars by Mechanism for FY 2005 and 2006
(in thousands)**

	2005	2006	Change '05-06 Am't	%
Research Project Grants:				
Noncompeting	\$1,600,585	\$1,596,655	-\$3,930	-0.2%
Admin Supplements	50,655	49,089	-1,566	-3.1%
Competing	439,870	415,067	-24,803	-5.6%
Subtotal, RPG	2,091,110	2,060,811	-30,299	-1.4%
SBIR/STTR	97,775	96,055	-1,720	-1.8%
Total, RPG	2,188,885	2,156,866	-32,019	-1.5%
Cancer Centers	255,263	265,002	9,739	3.8%
Specialized Cancer Centers (U54)	65,964	73,925	7,961	12.1%
SPOREs	133,025	124,933	-8,092	-6.1%
Total: Centers, Spec Ctrs, U54s & SPOREs	454,252	463,860	9,608	2.1%
Research Career Program	76,652	80,836	4,184	5.5%
Cancer Education	34,581	34,561	-20	-0.1%
Clinical Cooperative Groups	142,847	145,919	3,072	2.2%
Other Grants	54,891	65,777	10,886	19.8%
Subtotal, Other	308,971	327,093	18,122	5.9%
Total, Research Grants	2,952,108	2,947,819	-4,289	-0.1%
National Research Service Awards	67,299	66,618	-681	-1.0%
R&D Contracts	351,056	347,766	-3,290	-0.9%
Intramural Research	711,009	687,342	-23,667	-3.3%
Research Management & Support	173,702	184,135	10,433	6.0%
Cancer Prevention & Control	531,634	505,625	-26,009	-4.9%
Construction	0	0	0	0.0%
Buildings and Facilities	7,936	7,920	-16	0.2%
Total, NCI	4,794,744 *	4,747,225 *	-47,519	-1.0%
AIDS research included above	[\$265,907]	[\$253,666]	[\$12,241]	-4.6%

* Does not include \$2.9 million in FY2005 and \$6.9 million in FY2006 obligated by the NCI from funds collected thru the sale of the Breast Stamp by the U.S. Postal Service.

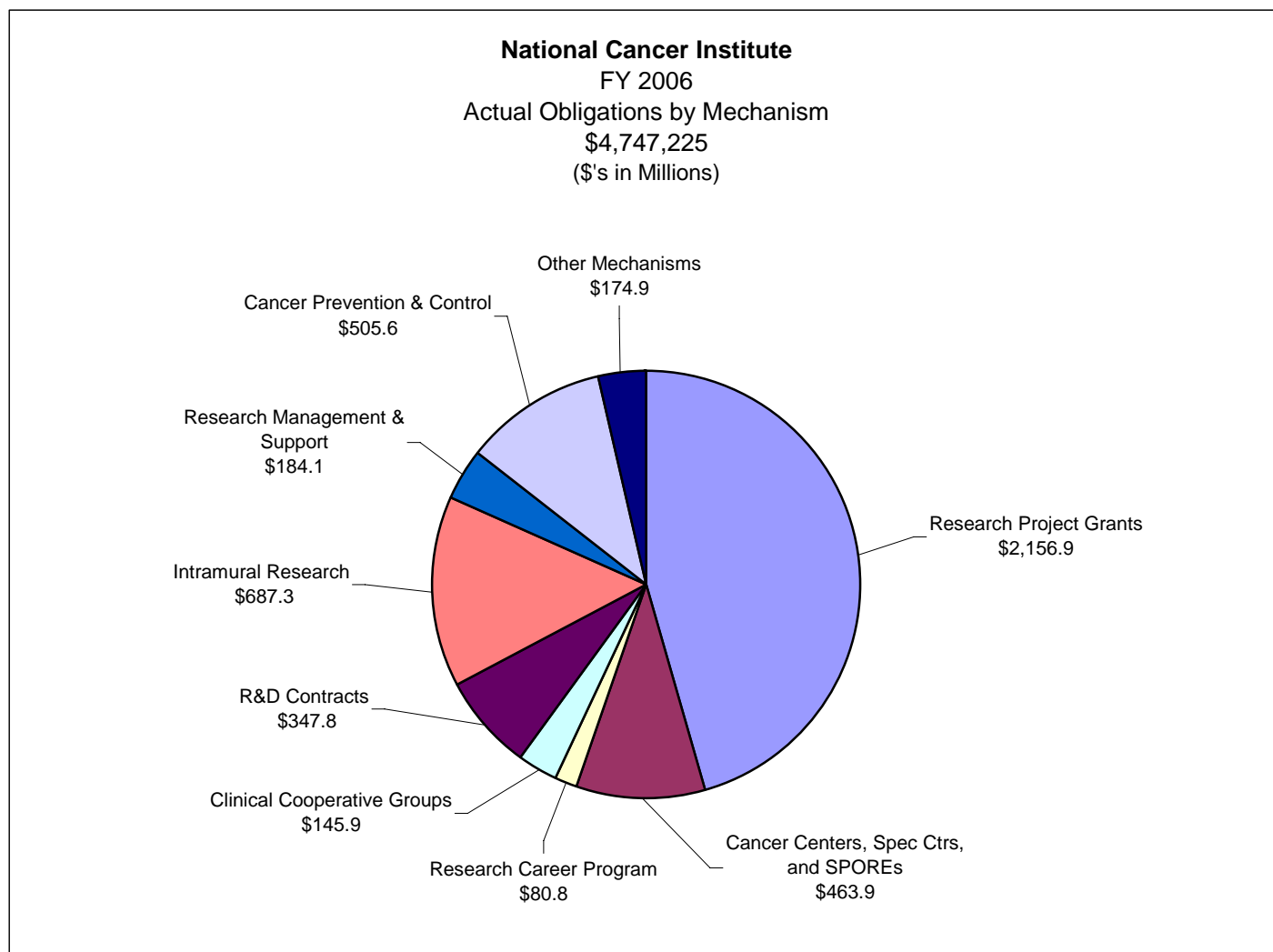
Percent Share of Total NCI Dollars

Summary Points

- The mechanism shares of the total budget have remained relatively stable from FY 2002 to FY 2006.
- Intramural Research remains under 15% of total NCI dollars.

Percent Share of Total NCI Dollars

	2002	2003	2004	2005	2006
Research Project Grants	45.3%	44.8%	45.8%	45.6%	45.4%
Cancer Centers	5.0%	5.1%	5.2%	5.3%	5.6%
Specialized Centers	0.4%	0.4%	0.6%	1.4%	1.6%
SPOREs	2.3%	2.7%	2.9%	2.8%	2.6%
Clinical Cooperative Groups	3.9%	3.5%	3.3%	3.0%	3.1%
Intramural Research	15.3%	15.1%	15.0%	14.8%	14.5%
R&D Contracts	7.1%	8.1%	7.7%	7.3%	7.3%
Cancer Prevention & Control	12.0%	11.6%	11.2%	11.1%	10.7%
Other Mechanisms	8.7%	8.6%	8.3%	8.7%	9.2%



Funding Trends

Summary Points

- The NCI budget has increased by \$570.5 million – or 13.7% – since FY 2002. All mechanisms, except for Intramural Research, Clinical Cooperative Groups, and Cancer Prevention & Control have experienced percentage increases greater than the total NCI growth since FY 2002.

Historical Funding Trends (Dollars in Millions)

	2002	2003	2004	2005	2006
Total NCI	\$4,176.7	\$4,592.3	\$4,723.9	\$4,794.8	\$4,747.2
Research Project Grants	1,893.2	2,058.7	2,161.4	2,188.9	2,156.9
Intramural Research	637.6	693.1	708.9	711.0	687.3
Cancer Centers	208.0	235.8	245.7	255.3	265.0
Specialized Centers	16.8	19.2	28.6	66.0	73.9
SPOREs	94.9	123.1	134.8	133.0	124.9
Clinical Cooperative Groups	163.8	158.7	154.3	142.8	145.9
Cancer Prevention & Control	501.2	533.2	530.0	531.6	505.6
R&D Contracts	298.2	370.8	361.6	351.1	347.8
Other Mechanisms	363.0	399.7	398.4	415.1	439.8

% Growth by Mechanism

	2002 to 2003	2003 to 2004	2004 to 2005	2005 to 2006	2002 to 2006
Total NCI	10.0%	2.9%	1.5%	-1.0%	13.7%
Research Project Grants	8.7%	5.0%	1.4%	-1.5%	13.9%
Intramural Research	8.7%	2.3%	0.3%	-3.3%	7.8%
Cancer Centers	13.4%	4.2%	3.9%	3.8%	27.4%
Specialized Centers	13.7%	-26.0%	365.0%	12.0%	340.0%
SPOREs	29.9%	9.5%	-1.4%	-6.1%	31.6%
Clinical Cooperative Groups	-3.1%	-2.7%	-7.5%	2.2%	-10.9%
Cancer Prevention & Control	6.4%	-0.6%	0.3%	-4.9%	0.9%
R&D Contracts	24.3%	-2.5%	-2.9%	-0.9%	16.6%
Other Mechanisms	10.1%	-0.4%	2.2%	6.0%	21.2%

Research Project Grants

Summary Points

- 89% of competing dollars supported grants awarded within the established payline; 11% supported grants as an exception to the payline.
- RFA funds, which decreased from the FY 2005 dollar level, accounted for 7% of FY 2006 competing dollars.
- Research Project Grant applications submitted to NCI increased by approximately 4%.
- 1,280 competing RPG's were funded.

Research Project Grants

(Dollars in Thousands)

	2005*		2006**	
	No.	Amount	No.	Amount
Total funding for RPGs	5,412	\$2,188,885	5,435	\$2,156,866
SBIR/STTR	265	\$97,775	263	\$96,055
Funding for RPGs without SBIR/STTR Program	5,147	\$2,091,110	5,172	\$2,060,811
Continuation or noncompeting grants funded	3,855	\$1,651,239	3,892	\$1,645,744
Competing grants funded	1,292	\$439,871	1,280	\$415,067
Administrative Supplements	292	\$50,655	290	\$49,089
Partial assessment for DHHS Program Evaluation		\$58,721		\$58,721
Funds set aside within competing dollars for:				
Grants within Paylines:	1,154	\$392,692	1,134	\$364,475
Traditional R01	704	\$226,797	691	\$219,040
Program Projects (P01)	38	\$65,273	31	\$60,781
RFA Grants	92	\$44,568	66	\$26,873
Share of competing grant funds		10.13%		6.47%
Exception Grants	138	\$47,179	146	\$50,592
Share of competing grant funds		10.73%		12.19%
Competing Application Requests	6,325	\$2,489,515	6,602	\$2,156,866
Funding Success Rate	20.40%		19.4%	
Percentile funding for R01 grants	16th		12th	
Average Cost-Competing		\$340	\$324	
Average Reduction from recommended/requested levels		-22%		-28%

*Does not include \$2.9 million received by the NCI from the US Postal Service's sale of the Breast Cancer Stamp.

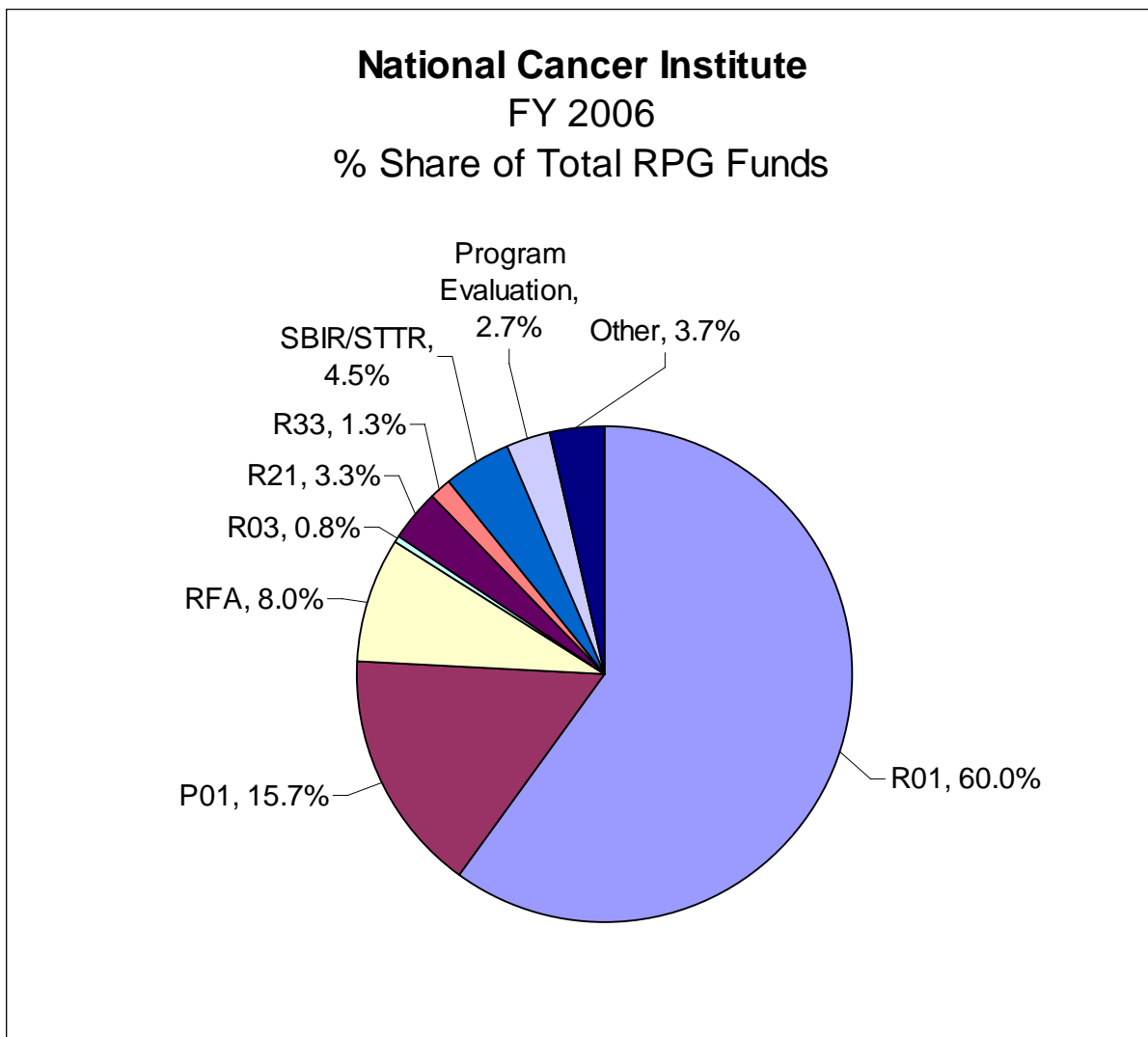
**Does not include \$6.9 million received by the NCI from the US Postal Service's sale of the Breast Cancer Stamp.

Grant Funding Paylines

RPG Mechanisms:	2005	2006	
R01 Traditional Grants	16th	12th	percentile
P01 Program Projects	N/A*	N/A*	priority score
R03 Small Grants	210	210	priority score
R21 Exploratory Phase I**	175**	14th	percentile
R33 Exploratory Phase II	160	155	priority score
R41/R42 STTR	185	165	priority score
R43/R44 SBIR	190	180	priority score

* Formal paylines for P01 grants are determined by the Executive Committee

**Payline in priority score format for 2005.

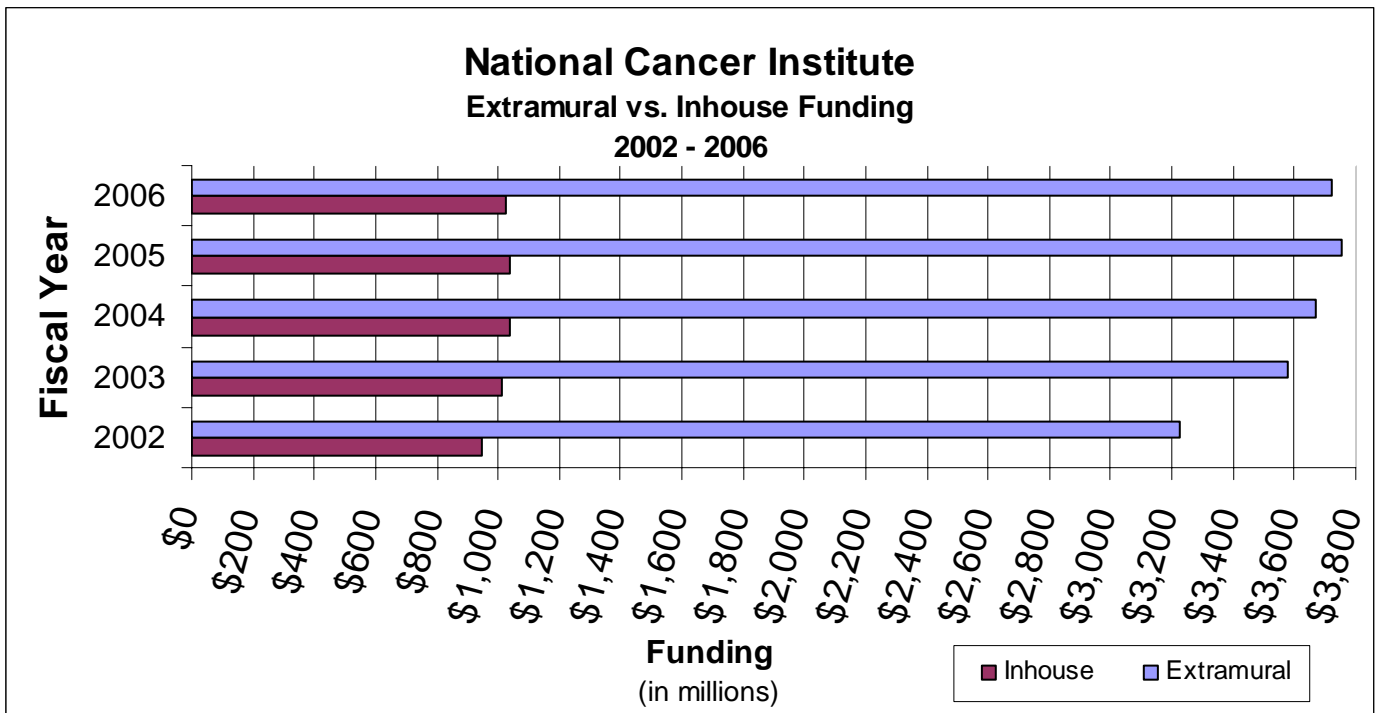


National Cancer Institute
Extramural vs. Inhouse Funding
(\$'s in millions)

Mechanism	Extramural					02-06% chg.
	2002	2003	2004	2005	2006	
Research Project Grants	\$1,893.20	\$2,058.70	\$2,161.40	\$2,188.90	\$2,156.87	13.9%
Cancer Centers	208.0	235.8	245.7	255.3	265.0	27.4%
Specialized Centers	16.8	19.1	14.1	66.0	73.9	340%
SPOREs	94.9	123.1	134.8	133.0	124.9	31.6%
Other Research Grants	304.1	320.3	314.9	309.0	327.1	7.6%
NRSA	63.7	65.9	66.2	67.3	66.6	4.6%
R&D Contracts	298.2	370.8	361.6	351.1	347.8	16.6%
Cancer Control Grants	208.2	221.6	220.0	232.0	213.5	2.5%
Cancer Control Contracts	135.9	160.0	153.0	145.8	137.1	0.9%
Construction	5.0	5.0	0	0	0	-100.0%
Buildings & Facilities	0	0	0	7.9	7.9	0%
Total Extramural Funds	3,227.90	3,580.30	3,671.70	3,756.30	3,720.75	15.3%

Mechanism	Inhouse					02-06% chg.
	2002	2003	2004	2005	2006	
Intramural Research	\$637.60	\$693.10	\$708.90	\$711.00	\$687.34	7.8%
RMS	154	167.3	171.6	173.7	184.1	19.6%
Control Inhouse	157.1	151.5	157.0	154.0	155.0	-1.3%
Total Inhouse Funds	948.7	1,011.90	1,037.50	1,038.70	1,026.48	8.2%

Total NCI **4,176.60** **4,592.20** **4,709.20** **4,795.00** **4,747.22** **13.7%**



Research Career Awards – “K” Program

Summary Points

- The Research Career Award mechanism grew by 5% in FY 2006.
- The number of Research Career Awards increased by 19 in FY 2006 from FY 2005.
- NCI’s funding in FY 2006 for the K30 Institutional Curriculum Awards, which are administered by the National Center for Research Resources, was \$1.4 million.

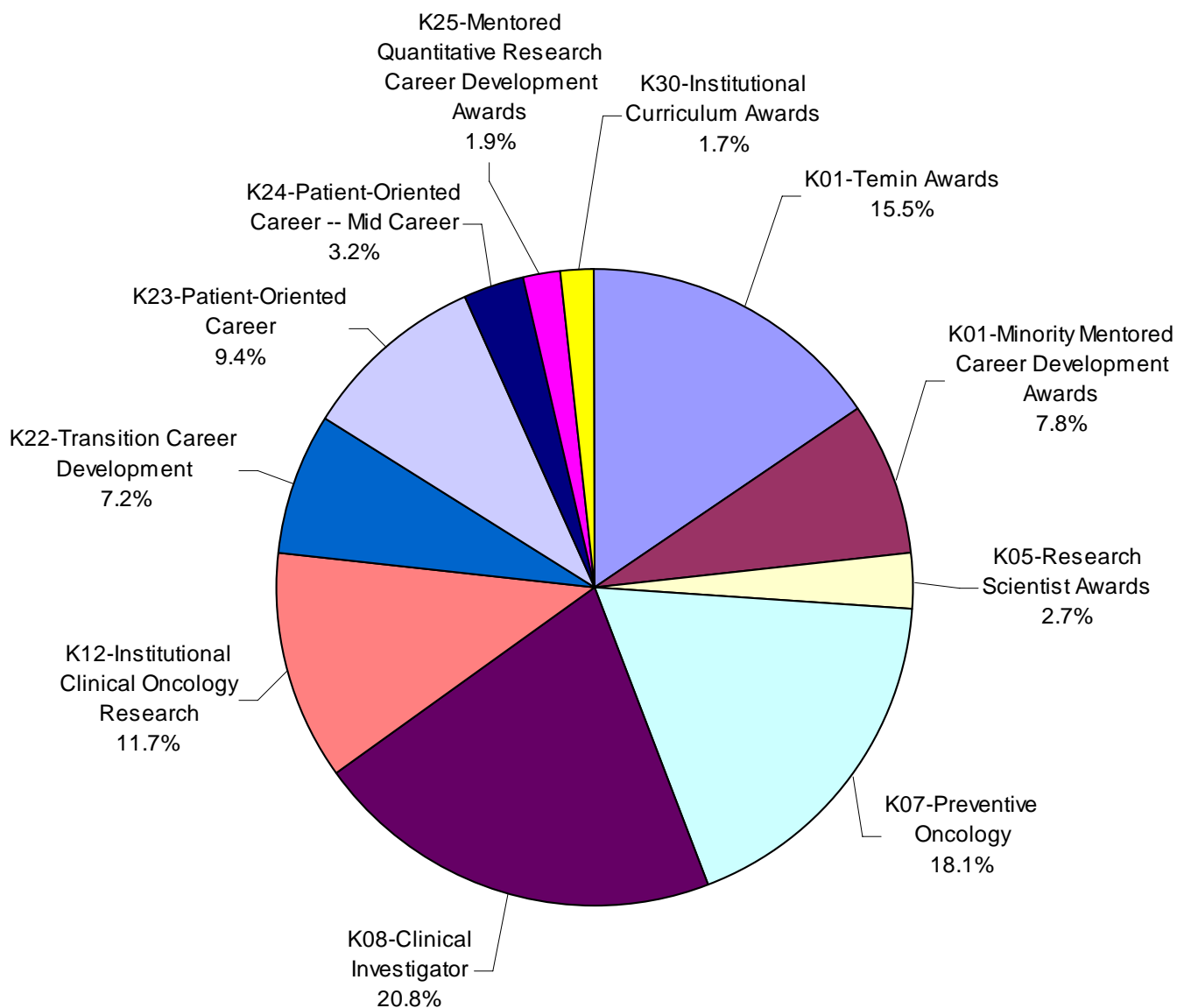
(Dollars in Thousands)

	2005		2006	
	No.	Amount	No.	Amount
K01 Temin Awards	82	\$11,897	88	12,493
K01 Minority Mentored Career Development Award	45	5,837	48	6,332
Subtotal, K01s	127	17,734	136	18,825
K05 Research Scientist Award	20	2,554	17	2,173
K07 Preventive Oncology	110	13,529	117	14,657
K08 Clinical Investigator	141	17,841	136	16,851
K12 Institutional Clinical Oncology Research	13	7,436	16	9,438
K22 Transition Career Development	35	5,344	38	5,818
K23 Patient-Oriented Career	60	7,533	60	7,617
K24 Patient-Oriented Career -- Mid Career Mentored Quantitative Research Career Development	16	2,306	17	2,557
K25 Award	9	1,227	11	1,506
	531	75,505	548	79,442
K30 Institutional Curriculum Awards -- Administered by NCRR	0	1,147	2	1,394
Total Research Career Program	531	76,652	550	80,836

National Cancer Institute

FY 2006

% of Total Research Award Funds



Research Dollars by Various Cancers

Summary Points

- Funding for various cancers listed below may overlap
- Funding for cancers listed below do not represent the entire NCI budget

Research Dollars by Various Cancers
(Dollars in Millions)

	2002	2003	2004	2005	2006
Total NCI	\$4,176.7	\$4,592.3	\$4,723.9	\$4,794.7	\$4,747.2
AIDS	254.4	263.4	267.0	265.9	253.7
Brain & Central Nervous System	95.2	111.5	132.3	124.9	130.3
Breast Cancer	522.6	548.7	566.2	560.1	584.7
Cervical Cancer	67.6	79.0	79.0	81.7	83.3
Clinical Trials	702.1	799.5	800.0	781.8	822.3
Colorectal Cancer	245.0	261.6	262.0	253.1	244.1
Head and Neck Cancers*	58.9	77.7	88.2	89.5	71.3
Hodgkins Disease	11.8	16.5	17.4	17.2	20.9
Leukemia	177.2	200.9	214.7	220.6	223.5
Liver Cancer	62.5	63.7	63.0	60.5	62.7
Lung Cancer	237.5	273.5	276.5	266.1	242.9
Melanoma	82.3	90.7	94.9	102.9	108.0
Multiple Myeloma	20.8	26.3	23.9	28.2	30.3
Non Hodgkin's Lymphoma	85.6	95.2	99.6	107.0	114.1
Ovarian Cancer	93.5	99.4	99.5	97.7	95.1
Pancreatic Cancer	33.1	42.3	52.7	66.7	74.2
Prostate Cancer	278.4	305.2	308.5	309.0	293.2
Stomach Cancer	11.4	13.4	11.6	11.0	11.5
Uterine Cancer	23.1	25.5	27.0	31.1	19.4

*The print edition of the FY 2005 NCI Fact Book incorrectly reported a subset of Head and Neck Cancers as the total for Head and Neck Cancer. The correct funding amount is reflected here in the FY 2005 column. In FY 2006, the definition for this category was amended resulting in a lower funding level. Without the change, Head and Neck Cancer funding would have been \$91.8 million for FY 2006.

National Cancer Institute

Director's Biography

John E. Niederhuber, M.D.

John E. Niederhuber, M.D. became Director of the National Cancer Institute (NCI) in September 2006. Throughout his distinguished career, he has had ties to both NCI and the National Institutes of Health. In addition to his work as a surgeon, professor, researcher, department chair, senior associate dean, and cancer center director, Dr. Niederhuber has also been the chair of the National Cancer Advisory Board, an external NCI advisor and grant reviewer, and a laboratory investigator supported by NCI and the NIH. He joined NCI in September 2005 as Deputy Director for Translational and Clinical Sciences, and became NCI's Acting Director in June 2006.

In addition to his leadership of the NCI, Dr. Niederhuber heads the Laboratory of Tumor and Stem Cell Biology in NCI's Center for Cancer Research, and also holds a clinical appointment on the NIH Clinical Center Medical staff. His lab is studying tissue stem cells as the cell-of-origin for cancer, as well as the complex relationship between tumor cells and their microenvironment.

As a surgeon, Dr. Niederhuber's clinical emphasis is on gastrointestinal cancer, hepatobiliary (liver, bile duct, and gallbladder) cancer, and breast cancer. Recognized for his pioneering work in hepatic artery infusion chemotherapy, he was also the first to demonstrate the feasibility of totally implantable vascular access devices.

Prior to coming to NCI, Dr. Niederhuber spent his years as Director of the University of Wisconsin School of Medicine Comprehensive Cancer Center, and a professor of surgery and oncology at that same university. Earlier in his career, he chaired the Department of Surgery at Stanford University, and held professorships at the Johns Hopkins University School of Medicine and at the University of Michigan.

A native of Steubenville, Ohio, Dr. Niederhuber is a graduate of Bethany College in West Virginia and the Ohio State University School of Medicine.

Former Directors of the National Cancer Institute

Andrew C. von Eschenbach, M.D.
January 2002 – September 2005

Andrew C. von Eschenbach, M.D. became the 12th Director of the National Cancer Institute in January 2002. He is a nationally recognized urologic surgeon who formerly directed the Genitourinary Cancer Center and the Prostate Cancer Research Program at The University of Texas M.D. Anderson Cancer Center in Houston, Texas. He also served as special assistant for external affairs to M.D. Anderson's president and held the Roy M. and Phyllis Gough Huffington Clinical Research Distinguished Chair in Urologic Oncology.

Richard D. Klausner, M.D.
August 1995 – September 2001

Dr. Klausner was appointed as the Director of the National Cancer Institute (NCI) on August 1, 1995. From 1984 until 1997 he was Chief of the Cell Biology and Metabolism Branch of the National Institute of Child Health & Human Development.

Samuel Broder, M.D.
December 1988 – March 1995

Dr. Broder joined NCI in 1972 as a Clinical Associate in the Metabolism Branch. In 1981, he became Associate Director for NCI's Clinical Oncology Program.

Vincent T. DeVita, Jr., M.D.
January 1980 – June 1980 (Acting)
July 1980 – August 1988

Dr. DeVita joined NCI in 1963 as a Clinical Associate in the Laboratory of Chemical Pharmacology. He served NCI as head of the Solid Tumor Service, Chief of the Medicine Branch, Director of the Division of Cancer Treatment and Clinical Director prior to his appointment as Director of NCI.

Arthur Canfield Upton, M.D.
July 1977 – December 1979

Prior to his tenure as NCI Director, Dr. Upton served as Dean of the School of Basic Health Sciences at the State University of New York at Stony Brook.

Frank Joseph Rauscher, Jr., Ph.D.
May 1972 – October 1976

Dr. Rauscher served as Scientific Director for Etiology, NCI, prior to his appointment as Director of NCI in 1972.

Carl Gwin Baker, M.D.
November 1969 – July 1970 (Acting)
July 1970 – April 1972

During his tenure with PHS, Dr. Baker served as Scientific Director for Etiology, NCI, and as Acting Director of NCI prior to his appointment as Director in July 1970.

Kenneth Milo Endicott, M.D.
July 1960 – November 1969

Dr. Endicott served as Chief of the Cancer Chemotherapy National Service Center, PHS, and as Associate Director, NIH, prior to being appointed Director of NCI in July 1960.

John Roderick Heller, M.D.
May 1948 – June 1960

Dr. Heller joined PHS in 1934 and became Chief of the Venereal Disease Division prior to his appointment as Director of NCI in 1948.

Leonard Andrew Scheele, M.D.
July 1947 – April 1948

Dr. Scheele served in various capacities during his tenure with PHS prior to his appointment as Assistant Chief and, subsequently, Director of NCI in July 1947.

Roscoe Roy Spencer, M.D.
August 1943 – July 1947

Dr. Spencer became NCI's first Assistant Chief and, subsequently, was appointed Director of the Institute in 1943.

Carl Voegtlin, Ph.D.
January 1938 – July 1943

Dr. Voegtlin served as Professor of Pharmacology and Chief of the Division of Pharmacy at the Hygienic Laboratory prior to becoming the first Director of NCI in 1938.

National Cancer Advisory Board

Membership and Term

2008 Chairperson

Carolyn D. Runowicz, M.D.

The Carol and Ray Neag Comprehensive
Cancer Center
University of Connecticut Health Center
Farmington, CT 06030

2012 Anthony Atala, M.D.

Wake Forest Institute for Regenerative
Medicine
Department of Urology
Wake Forest University School of Medicine
Winston-Salem, NC 27157

2012 Bruce Allan Chabner, M.D.

Massachusetts General Hospital
Cancer Center
Massachusetts General Hospital
Boston, MA 02114

2008 Moon S. Chen, Jr., Ph.D., M.P.H.

Public Health Sciences
Population Science at the UC Davis
Cancer Center
Cancer Disparities and Research
University of California
Sacramento, CA 95817

2012 Donald S. Coffey, Ph.D.

Departments of Urology/Oncology/Pathology
Pharmacology and Molecular Science
Johns Hopkins University School of Medicine
Baltimore, MD 21287

2008 Kenneth H. Cowan, M.D., Ph.D.

UNMC Eppley Cancer Center
Eppley Institute for Research in Cancer
University of Nebraska Medical Center
Omaha, NE 68198-6805

2008 Jean B. deKernion, M.D.

Department of Urology
David Geffen School of Medicine
University of California at Los Angeles
Los Angeles, CA 90095-1738

2010 Lloyd K. Everson, M.D.

US Oncology Incorporated
Houston, TX 77060

2012 Judah Folkman, M.D.

Vascular Biology Program
Children's Hospital of Boston
Harvard Medical School
Karp Family Research Laboratories
Boston, MA 02115

2010 Kathryn Giusti, M.B.A.

Multiple Myeloma Research Foundation, Inc.
Multiple Myeloma Research Consortium
Norwalk, CT 06851

2012 Robert A. Ingram

GlaxoSmithKline
Research Triangle Park, NC 27709

2010 Mr. David H. Koch

Koch Industries
New York, NY 10021

2010 Diana M. Lopez, Ph.D.

Department of Microbiology and Immunology
University of Miami Miller School of Medicine
Miami, FL 33136

2012 Karen Dow Meneses, Ph.D.

School of Nursing
College of Health and Public Affairs
University of Central Florida
Orlando, FL 32816-2211

2008 Franklyn G. Prendergast, M.D., Ph.D.

Mayo Clinic Comprehensive Cancer Center
Mayo Foundation
Rochester, MN 55905

2008 Lydia G. Ryan, M.S.N., P.N.P.

Children's Healthcare of Atlanta
AFLAC Cancer Center
Atlanta, GA 30322

2010 Daniel D. Von Hoff, M.D., F.A.C.P.

Translational Drug Development Division
Translational Genomics Research Institute
University of Arizona Department of Medicine
Phoenix, AZ 85004

Executive Secretary

Paulette S. Gray, Ph.D.

Committee Management Officer

Ms. Claire L. Harris

National Cancer Advisory Board (Continued)

Ex Officio Members

The Honorable Elaine Chao, M.B.A.

Secretary of Labor
Washington, DC 20210

Andrew C. von Eschenbach, M.D.

Commissioner
Food and Drug Administration
Rockville, MD 20857

John Howard, M.D., M.P.H., J.D., LL.M.

Director
National Institute for Occupational Safety and Health
Washington, DC 20201

Mr. Stephen L. Johnson

Administrator
Environmental Protection Agency
Washington, DC 20460

The Honorable Michael J. Kussman, M.D., M.S., M.A.C.P.

Acting Under Secretary for Health
Veterans Health Administration
Department of Veterans Affairs
Washington, DC 20420

The Honorable Michael O. Leavitt

Secretary
Department of Health and Human Services
Washington, DC 20201

John H. Marburger, III, Ph.D.

Science Advisor to the President
Director
Office of Science and Technology Policy
Executive Office of the President
Washington, DC 20502

Ms. Nancy A. Nord

Acting Chairperson
Consumer Product Safety Commission
Bethesda, MD 20814

Ari Patrinos, Ph.D.

Associate Director
Office of Biological and Environmental Research
U.S. Department of Energy
Washington, DC 20585

David A. Schwartz, M.D.

Director
National Institute of Environmental Health Sciences
National Institutes of Health
Research Triangle Park, NC 27709

The Honorable Dr. William Windwerder, Jr.

Assistant Secretary of Defense for Health Affairs
Washington, DC 20301-1200

Elias A. Zerhouni, M.D.

Director
National Institutes of Health
Bethesda, MD 20892

National Cancer Advisory Board (Continued)

Alternates to Ex Officio Members

Michael A. Babich, Ph.D.
Directorate for Health Sciences
U.S. Consumer Product Safety Commission
Bethesda, MD 20814
(Ms. Nancy A. Nord - CPSC)

TBN
Assistant Director for Life Sciences
Office of Science and Technology Policy
Executive Office of the President
Washington, DC 20502
(John H. Marburger III, Ph.D.-OSTP)

Allen Dearry, Ph.D.
Interim Associate Director
National Toxicology Program
National Institute of Environmental Health Sciences
National Institutes of Health
Research Triangle Park, NC 27709
(David A. Schwartz, M.D., - NIEHS)

Raynard Kington, M.D., Ph.D.
Deputy Director
National Institutes of Health
Bethesda, MD 20892
(Elias A. Zerhouni, M.D., - NIH)

Peter Kirchner, M.D.
Senior Scientist
Office of Biological & Environmental Research
Division of Medical Science
U.S. Department of Energy
Germantown, MD 20874-1290
(Ari Patrinos, Ph.D. - DOE)

T. G. Patel, M.D., M.A.C.P.
Captain MC USN (Retired)
Program Chief, Oncology and Kidney Diseases
Veterans Health Administration
Department of Veterans' Affairs
Washington, DC 20420
(The Honorable Michael J. Kussman, M.D., M.S., M.A.C.P. - VA)

Richard Pazdur, M.D.
Division Director
Division of Oncology Drugs
Food and Drug Administration
Rockville, MD 20857
(Andrew C. von Eschenbach, M.D. - FDA)

John F. Potter, M.D.
Director
United States Military Cancer Institute
Walter Reed Army Medical Center
Washington D.C. 20307
(The Honorable Dr. William Winkwerder, Jr. - DOD)

R. Julian Preston, Ph.D.
Acting Associate Director for Health
U.S. Environmental Protection Agency
Research Triangle Park, NC 27703
(Mr. Stephen L. Johnson - EPA)

Anita L. Schill, Ph.D., M.P.H., M.A., R.N., COHN-S
Deputy Associate Director for Science
Office of the Director
National Institute for Occupational Safety
and Health
Washington, DC 20201
(John Howard, M.D., M.P.H., J.D., LL.M. - NIOSH)

Donald J. Wright, M.D. MPH
Director
Office of Occupational Medicine
Department of Labor, OSHA
Washington, DC 20210
(The Honorable Elaine Chao - DOL)

Note: Bold print represents Ex Officio Members

National Cancer Advisory Board (Continued)

NCAB Subcommittee Assignments

Subcommittee on Activities and Agenda

Dr. Carolyn Runowicz - Chair
Dr. Moon Shao-Chuang Chen, Jr.
Dr. Jean B. deKernion
Dr. R. Julian Preston, EPA
Ms. Lydia Ryan
Dr. Donald Wright, DOL
EXECUTIVE SECRETARY: Dr. Cedric Long
(301) 496-9138

Subcommittee on Cancer Centers

TBN - Chair
Dr. Kenneth Cowan
Dr. Allen Dearry, NIEHS
Mr. David Koch
Dr. Carolyn Runowicz
EXECUTIVE SECRETARY: Dr. Ernie Hawk
(301) 594-2684

Subcommittee on Clinical Investigations

Dr. Jean B. deKernion - Chair
Ms. Kathryn Giusti
Mr. David Koch
Dr. Richard Pazdur, FDA
Dr. John Potter, DOD
Dr. Daniel Von Hoff
EXECUTIVE SECRETARY: Dr. James Doroshow
(301) 496-4291

Subcommittee on Planning and Budget

Dr. Franklyn Prendergast - Chair
Dr. Moon Shao-Chuang Chen, Jr.
Dr. Diana Lopez
EXECUTIVE SECRETARY: Ms. Cherie Nichols
(301) 496-5515

Subcommittee on Special Actions

TBN - Chair
Committee of the Whole
EXECUTIVE SECRETARY: Dr. Paulette Gray
(301) 496-5147

Ad hoc Subcommittee on Communications

Ms. Lydia Ryan - Chair
Dr. Michael Babich, CPSC
Dr. Moon Shao-Chuang Chen, Jr.
Dr. Allen Dearry, NIEHS
Ms. Kathryn Giusti
Dr. Diana Lopez
Dr. Anita Schill, NIOSH
EXECUTIVE SECRETARY: Ms. Nelvis Castro
(301) 435-7778

Ad hoc Subcommittee on Confidentiality of Patient Data

Dr. Kenneth Cowan - Chair
Dr. Peter Kirchner, DOE
Dr. T. G. Patel, VA
Dr. Carolyn Runowicz
Ms. Lydia Ryan
EXECUTIVE SECRETARY: Dr. Carolyn Compton
(301) 496-1550

Ad hoc Subcommittee on Biomedical Technology

TBN - Chair
Ms. Kathryn Giusti
Mr. David Koch
Dr. Daniel Von Hoff
EXECUTIVE SECRETARY: Ms. Kathleen Schlom
(301) 435-5709

Board of Scientific Counselors Intramural Programs

Clinical Sciences and Epidemiology

Appointees	Expiration of Appointment	Appointees	Expiration of Appointment
Chair - Theodore Lawrence, M.D., Ph.D.	2009		
Martin Blaser, M.D.	2010	Susan Mayne, Ph.D.	2009
David Carbone, M.D., Ph.D.	2010	Monica Morrow, M.D.	2010
Esteban Celis, M.D., Ph.D.	2008	Andrew Olshan, Ph.D.	2009
Leland Chung, Ph.D.	2008	Timothy Rebbeck, Ph.D.	2009
Scott Davis, Ph.D.	2010	Eric Rowinsky, M.D.	2008
Barbara Gilchrest, M.D.	2009	Charles Sawyers, M.D.	2009
Richard Hoppe, M.D.	2010	David Scadden, M.D.	2007
Elizabeth Jaffee, M.D.	2010	Paul Sondel, M.D., Ph.D.	2009
Bruce Korf, M.D., Ph.D.	2008	Ann Thor, M.D.	2010
Susan Leigh, RN	2008		
Maria Martinez, Ph.D.	2010	Executive Secretary - Brian Wojcik, Ph.D.	

Basic Sciences

Chair - Harinder Singh, Ph.D.	2007		
Stephen Benkovic, Ph.D.	2008	Leona Samson, Ph.D.	2010
Christine Biron, Ph.D.	2010	Robert Siliciano, M.D., Ph.D.	2009
Olivera Finn, Ph.D.	2010	Joseph Testa, Ph.D.	2010
Michael Gould, Ph.D.	2009	Jeffrey Trent, Ph.D.	2009
James Haber, Ph.D.	2010	Paul Ts'o, Ph.D.	2010
Katherine Jones, Ph.D.	2008	Teresa Wang, Ph.D.	2008
Michael Karin, Ph.D.	2010	Jerry Workman, Ph.D.	2009
Laimonis Laimins, Ph.D.	2009		
Dan Littman, M.D., Ph.D.	2007		
Guillermina Lozano, Ph.D.	2007		
Frank Rauscher, Ph.D.	2010		
Martine Roussel, Ph.D.	2008	Executive Secretary - Florence E. Farber, Ph.D.	

Board of Scientific Advisors Extramural Programs

Chair - Robert C. Young	2007		
Paul M. Allen, Ph.D.	2011	Michael P. Link, M.D.	2007
Hoda A. Anton-Culver, Ph.D.	2008	Christopher J. Logothetis, M.D.	2009
Kirby I. Bland, M.D.	2009	Lynn M. Matrisian, Ph.D.	2007
Susan J. Curry, Ph.D.	2010	Kathleen H. Mooney, Ph.D., F.A.A.N., R.N.	2010
William S. Dalton, M.D., Ph.D.	2010	Edith A. Perez, M.D.	2009
Raymond N. Dubois, M.D., Ph.D.	2007	Mack Roach III, M.D.	2007
H. Shelton Earp III, M.D.	2007	Richard L. Schilsky, M.D.	2008
Kathleen M. Foley, M.D.	2009	Robert D. Schreiber, Ph.D.	2010
Sanjiv S. Gambhir, M.D., Ph.D.	2009	Ellen V. Sigal, Ph.D.	2009
Patricia A. Ganz, M.D.	2007	Margaret R. Spitz, M.D., M.P.H.	2007
Todd R. Golub	2011	Jean Y. Wang, Ph.D.	2011
Joe W. Gray, Ph.D.	2009	Jane C. Weeks, M.D.	2009
William N. Hait, M.D., Ph.D.	2008	Robert A. Weinberg, Ph.D.	2011
Leland H. Hartwell, Ph.D.	2011	James K. V. Willson, M.D.	2011
James R. Heath, Ph.D.	2010		
Mary J. Hendrix, Ph.D.	2009		
Leroy E. Hood, Ph.D., M.D.	2009		
Hedvig Hricak, M.D., Ph.D.	2007	Executive Secretary - Paulette S. Gray, Ph.D.	
Eric Hunter, Ph.D.	2007		
Paula K. Kim	2007		

President's Cancer Panel

LaSalle D. Leffall, Jr. M.D., F.A.C.S. 2007

Chairman
Charles R. Drew Professor of Surgery
Howard University Hospital
2041 Georgia Avenue, NW
Suite 4000
Washington, DC 20060

Margaret L. Kripke, Ph.D. 2009

Executive Vice President/Chief Academic Officer
University of Texas
M.D. Anderson Cancer Center
Unit 113
1515 Holcombe Boulevard
Houston, TX 77030

Lance E. Armstrong 2008

Founder, Lance Armstrong Foundation
1221 South MoPac Expressway
Suite 320
Austin, TX 78746

Abby B. Sandler, Ph.D.

Executive Secretary
6116 Executive Blvd.
Suite 212, MSC 8349
Bethesda, MD 20892-8349

Executive Committee Members

John E. Niederhuber, M.D.

Director

Paulette Gray, Ph.D.

Director, Division of Extramural Activities

Anna D. Barker, Ph.D.

Deputy Director, Advanced Technologies and
Strategic Partnerships

Peter Greenwald, M.D., Dr.Ph

Director, Division of Cancer Prevention

Ken Buetow, Ph.D.

Director, NCI Center for Bioinformatics

Ernest T. Hawk, M.D., M.P.H.

Director, Office of Centers, Training, & Resources

Lenora Johnson

Acting Director, Office of Communications
and Education

Alan S. Rabson, M.D.

Deputy Director

Robert Croyle, Ph.D.

Director, Division of Cancer Control and
Population Sciences

Sanya Springfield, Ph.D.

Director, Center to Reduce
Cancer Health Disparities

James Doroshow, M.D.

Director, Division of Cancer Treatment
and Diagnosis

Dinah Singer, Ph.D.

Director, Division of Cancer Biology

Joseph Fraumeni, M.D.

Director, Division of Cancer Epidemiology and
Genetics

Robert Wiltout, Ph.D.

Director, Center for Cancer Research

Joy Wiszneauckas, M.B.A

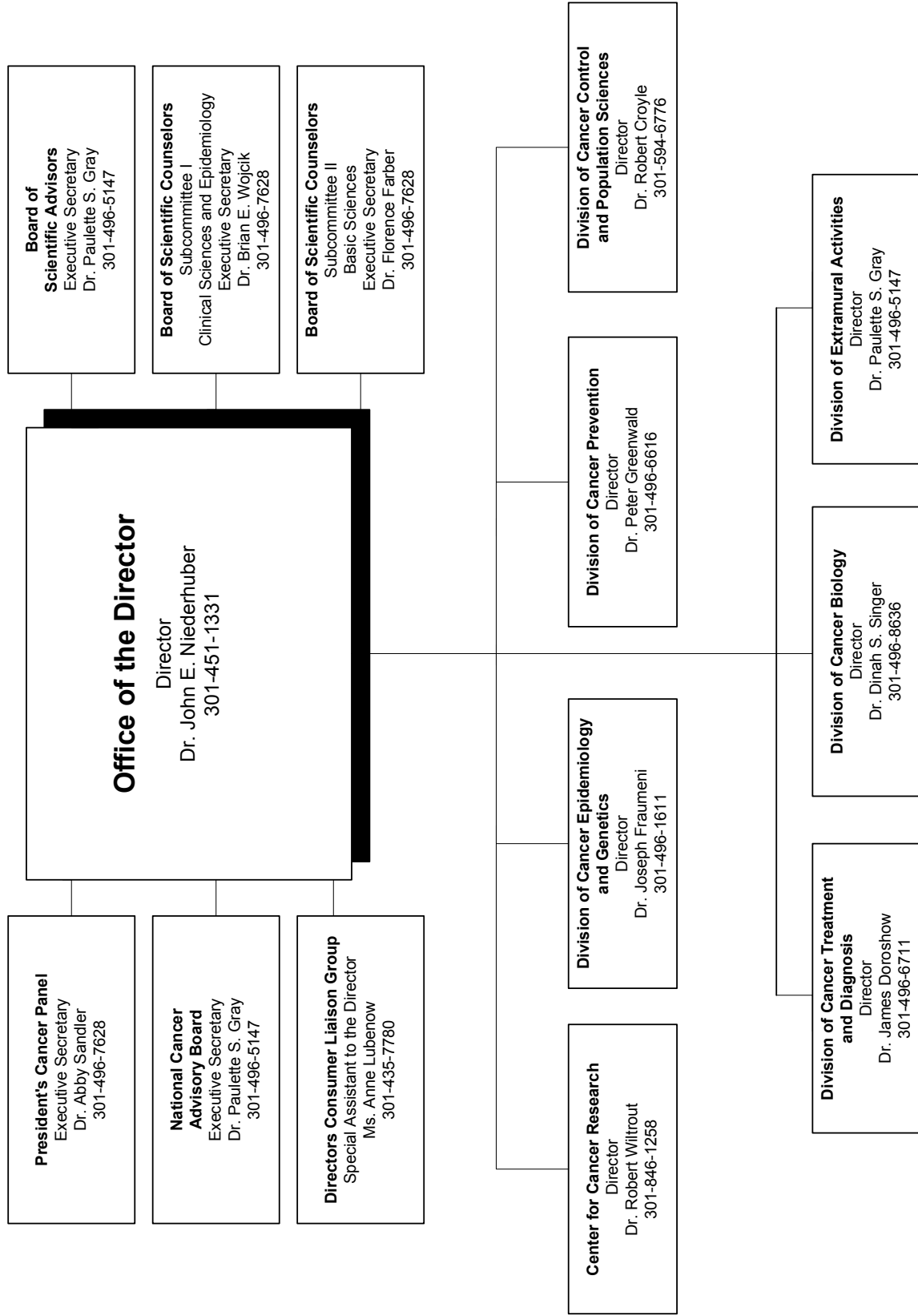
Executive Secretary

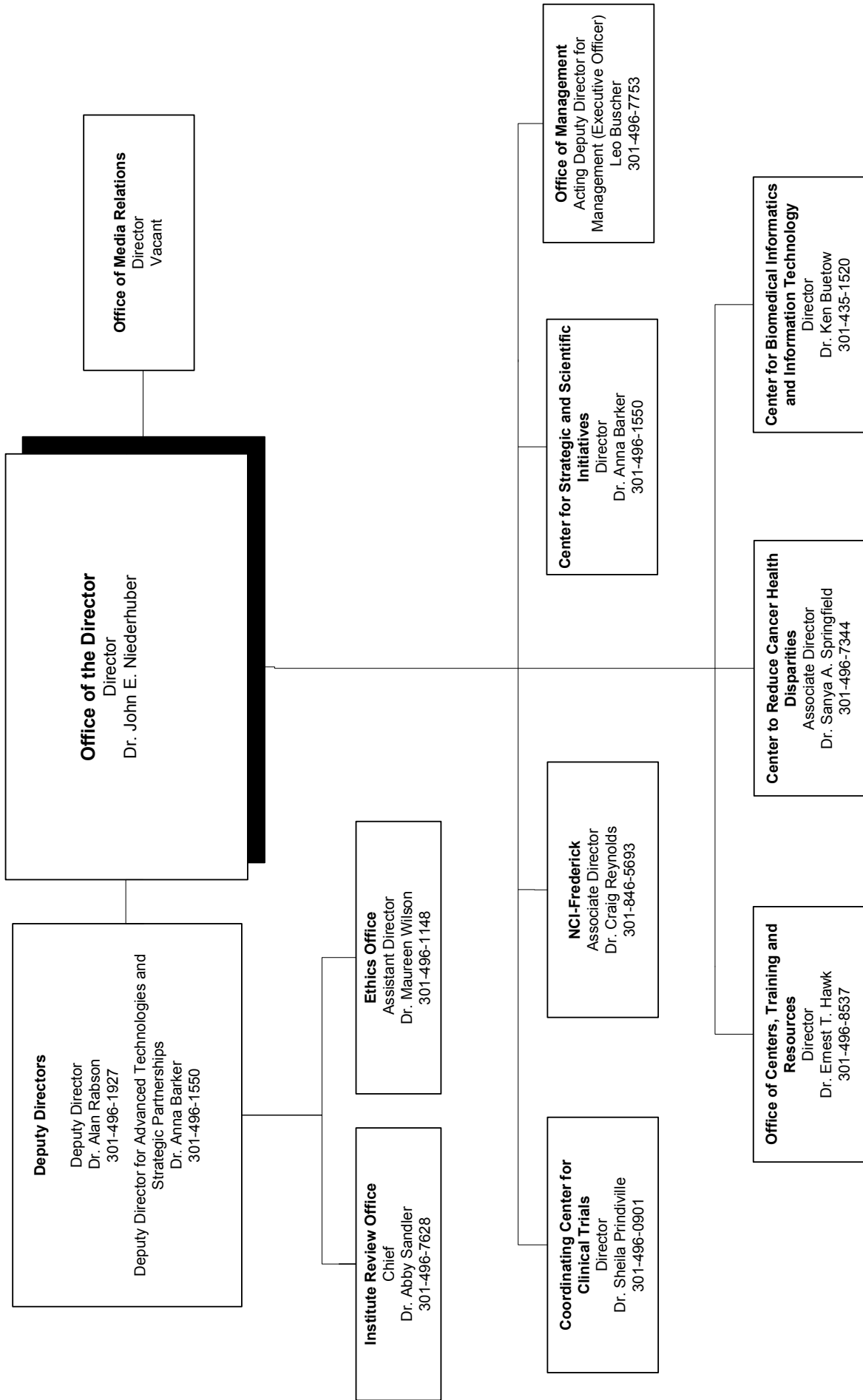
NCI Director's Consumer Liaison Group

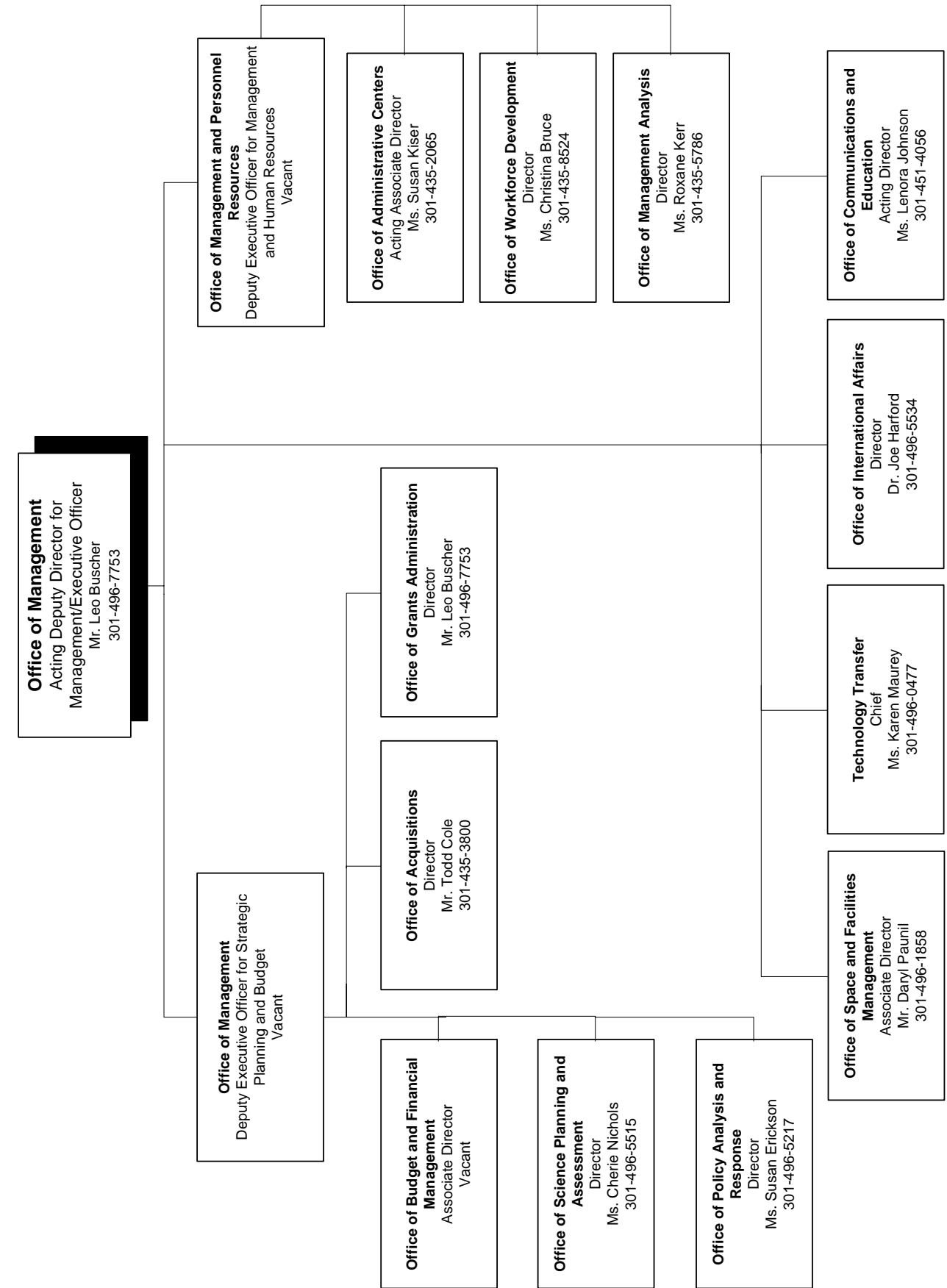
Mr. Doug Ulman, Chair Lance Armstrong Foundation	2008	Ms. Kelly L. Cotter CureSearch National Childhood Cancer Foundation	2008
Dr. Beverly Laird, Vice Chair American Cancer Society Komen Breast Cancer Foundation	2008	Ms. Nancy Davenport-Ennis Patient Advocate Foundation	2008
Ms. Margaret L. Anthony Yul Brynner Head and Neck Foundation	2008	Alan M. Kaye National Cervical Cancer Coalition	2008
Ms. Vernal H. Branch Virginia Breast Cancer Foundation National Breast Cancer Coalition	2007	Ms. Mary Jackson Scroggins Ovarian Cancer National Alliance	2007
Mr. William Bro Kidney Cancer Association	2008	Ms. Sue Sumpter Leukemia & Lymphoma Society/Candlelighters Childhood Cancer Foundation	2007
Dr. Grace L. Butler Hope through GRACE, Inc.	2008	Dr. Marisa Weiss breastcancer.org	2007
Ms. Lourie Campos Community Health Partnership	2008	Ms. Celeste Whitewolf Native People's Circle of Hope	2008
Ms. Yvette Colon American Pain Foundation	2008	Col. (Ret.) James Williams Pennsylvania Prostate Cancer Coalition	2008

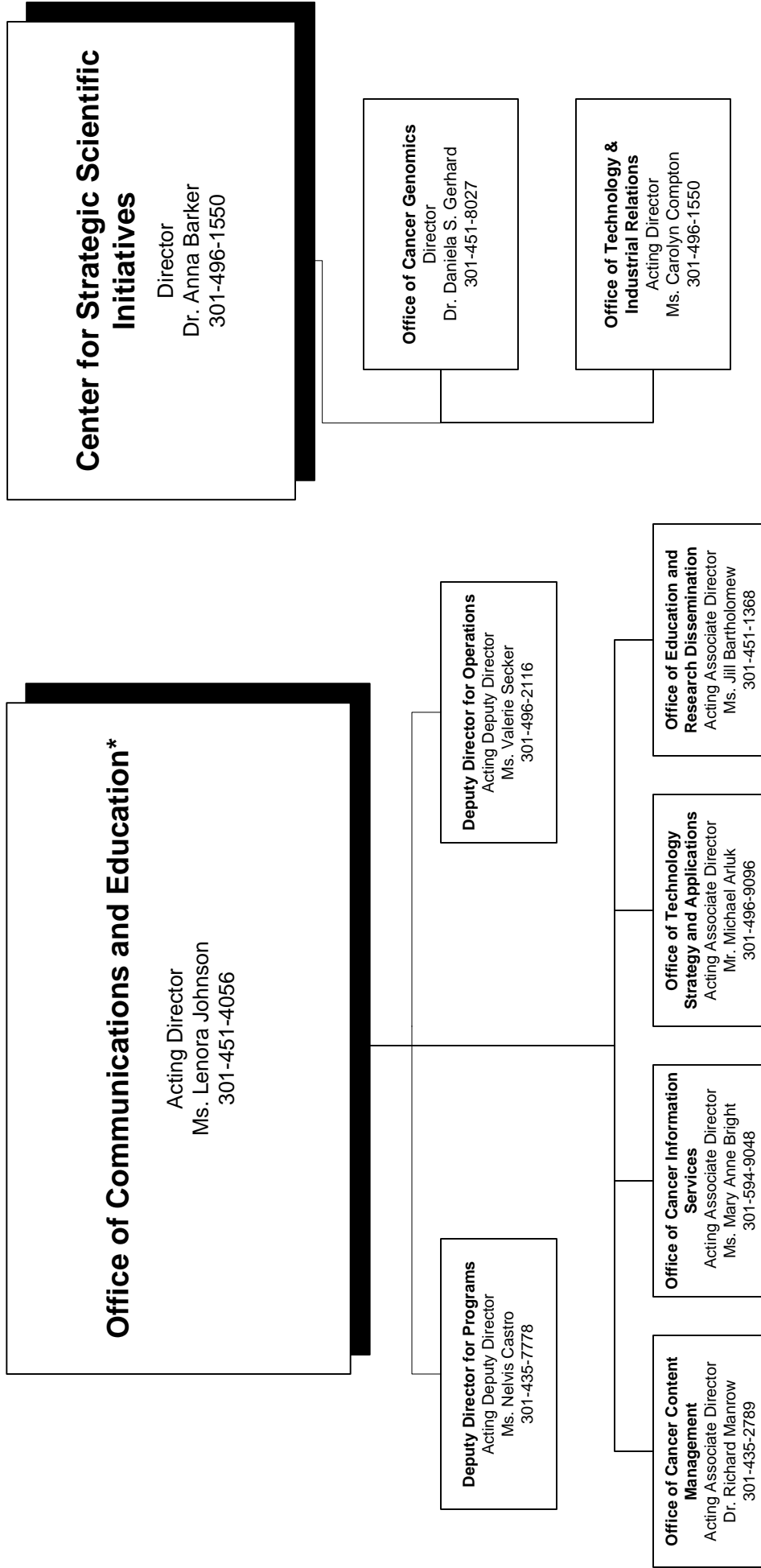
Ms. Barbara H. Guest, Executive Secretary
Director's Consumer Liaison Group
Office of Liaison Activities
National Cancer Institute
6116 Executive Boulevard, Suite 220
Bethesda, MD 20892

National Cancer Institute

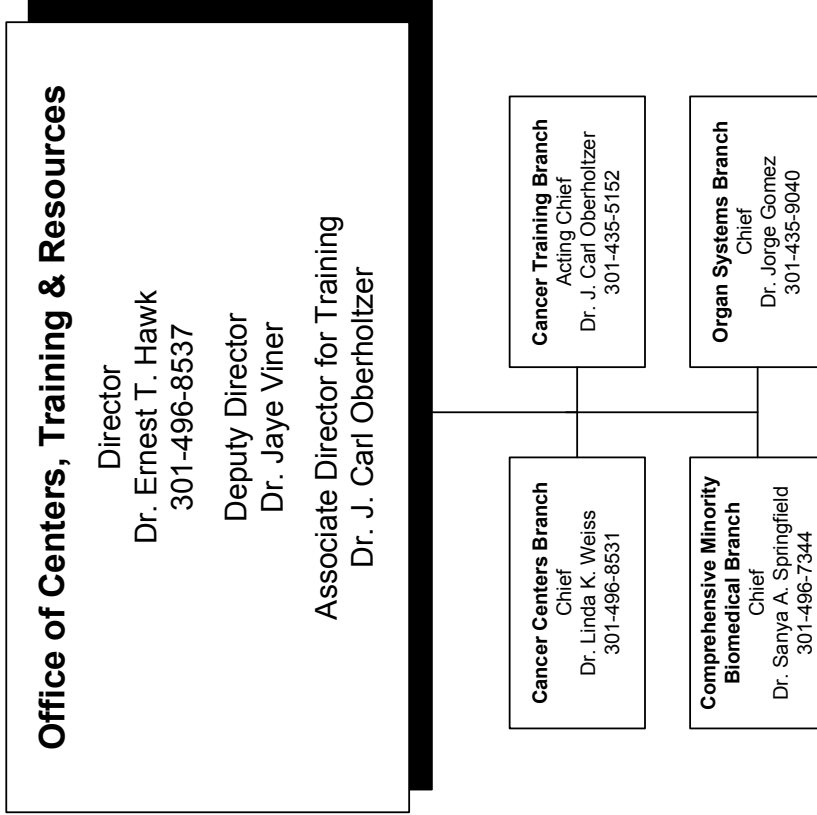
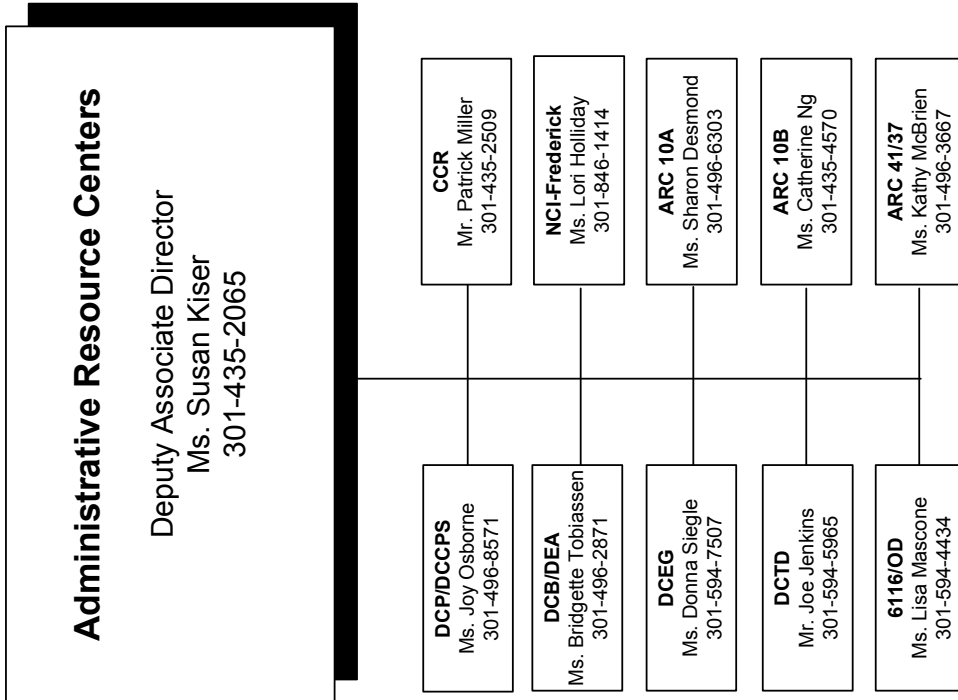


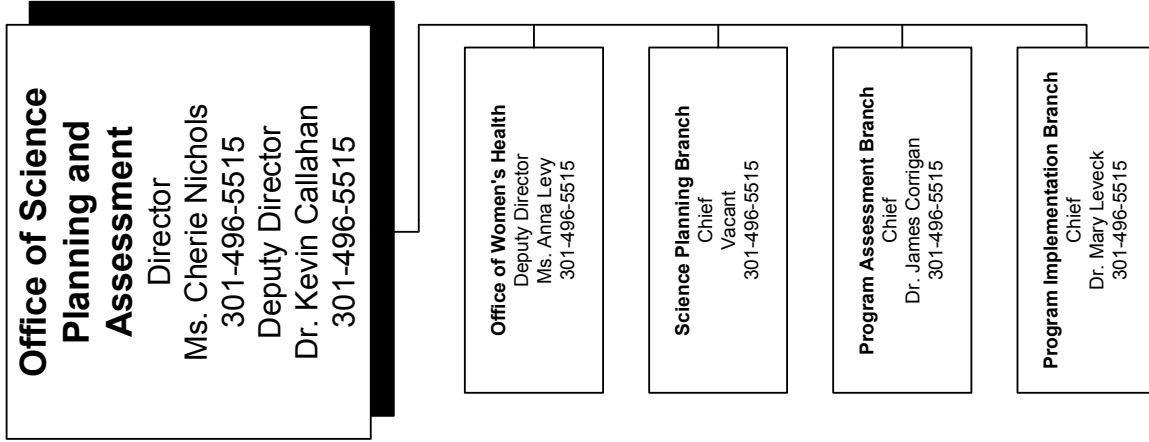
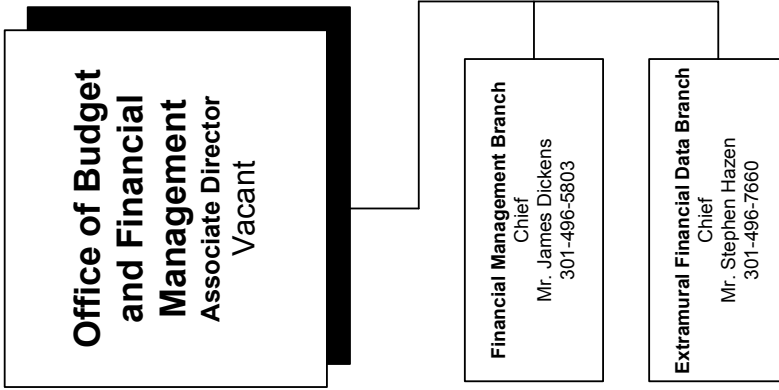
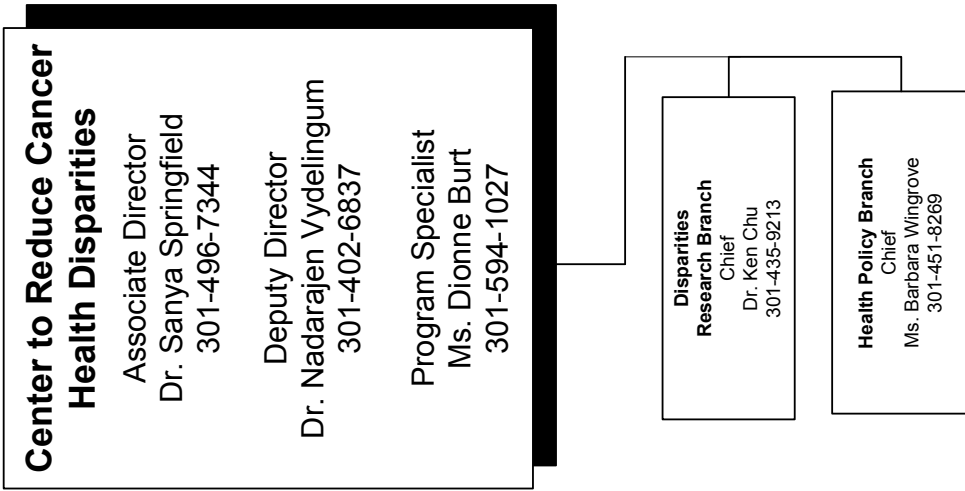




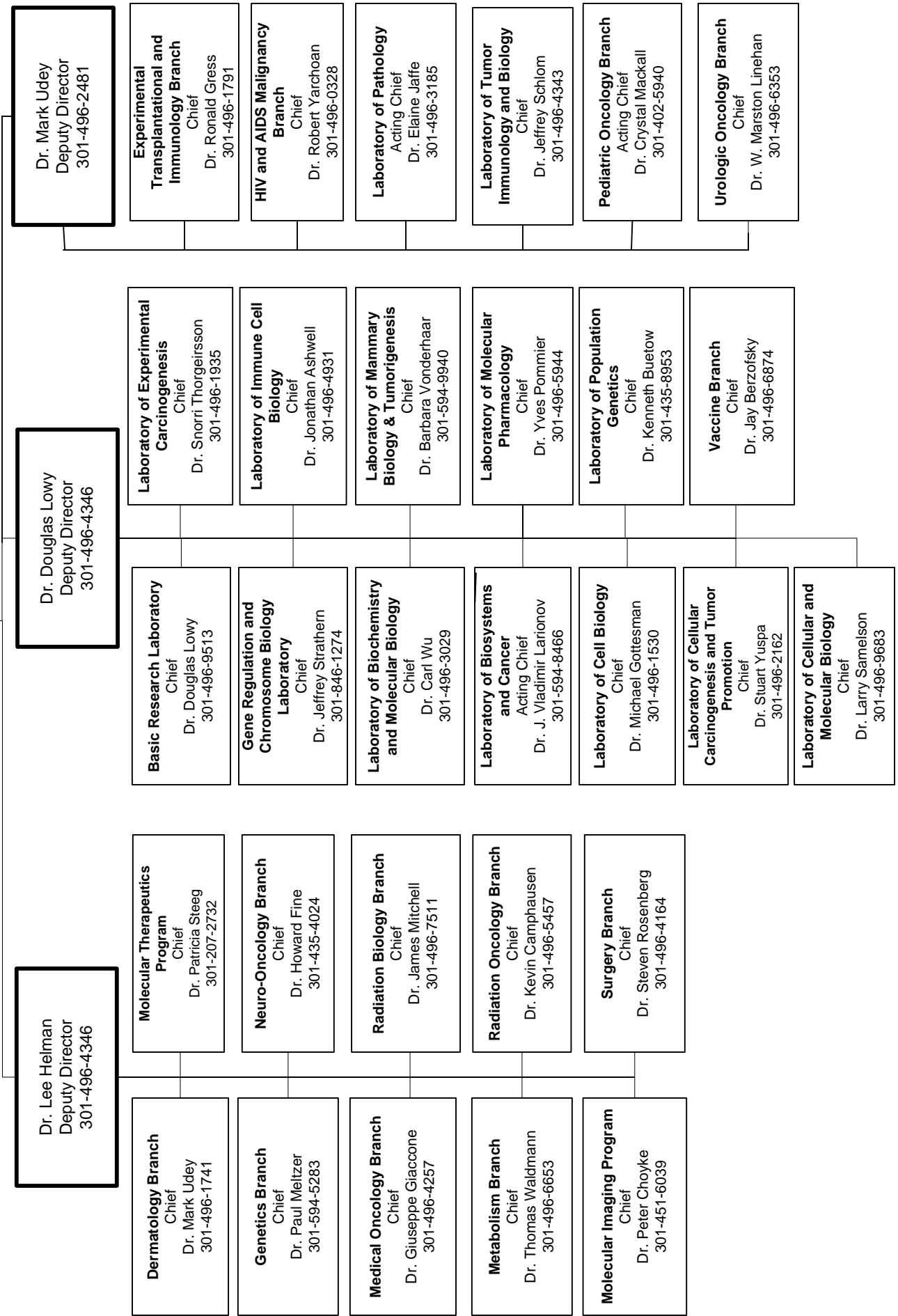


*Chart reflects OC/OESI integration.





**Center for Cancer Research
Office of the Director**
Director
Dr. Robert Wiltrot
301-496-4345



**Center for Cancer Research
Office of the Director**
Director
Dr. Robert Wiltout
301-496-4345

**Dr. Jeffrey Strathern
Deputy Director**
301-846-1274

**Dr. Lawrence Samelson
Deputy Director**
301-496-4346

**Cancer and Developmental
Biology Laboratory**
Chief
Dr. Colin Stewart
301-846-1755

**Gene Regulation and
Chromosome Biology
Laboratory**
Chief
Dr. Jeffrey Strathern
301-846-1274

HIV Drug Resistance Program
Director
Dr. Stephen Hughes
301-846-5943

**HIV DRP Host Virus
Interaction Branch**
Acting Chief
Dr. Stephen Hughes
301-846-1619

**HIV DRP Resistance
Mechanisms Laboratory**
Chief
Dr. Stuart LeGrice
301-846-5256

**HIV DRP Retroviral
Replication Laboratory**
Chief
Dr. Stephen Hughes
301-846-1619

**Laboratory of Cancer
Prevention**
Chief
Dr. Nancy Colburn
301-846-1342

**Laboratory of Cell and
Developmental Signaling**
Acting Chief
Dr. Debbie Morrison
301-846-1733

**Laboratory of Comparative
Carcinogenesis**
Chief
Dr. Larry Keefer
301-846-1467

**Laboratory of Experimental
Immunology**
Chief
Dr. Giorgio Trinchieri
301-846-1323

**Laboratory of Genomic
Diversity**
Chief
Dr. Stephen O'Brien
301-846-1296

**Laboratory of Medicinal
Chemistry**
Chief
Dr. Victor Marquez
301-846-5954

**Laboratory of Molecular
Immunoregulation**
Chief
Dr. Joost Oppenheim
301-846-1551

CCR Nanobiology Program
Chief
Dr. Robert Blumenthal
301-846-5532

**Laboratory of Protein
Dynamics and Signaling**
Chief
Dr. Allan Weissman
301-846-1222

**Macromolecular
Crystallography Laboratory**
Chief
Dr. Alexander Wlodawer
301-846-5036

**Molecular Targets Discovery
Program**
Chief
Dr. James McMahon
301-846-5391

**Mouse Cancer Genetics
Program**
Acting Chief
Dr. Lino Tessarollo
301-846-1202

**Structural Biophysics
Laboratory**
Chief
Dr. R. Andrew Byrd
301-846-1407

**Cell and Cancer Biology
Branch**
Chief
Dr. Kathleen Kelly
301-435-4651

**Experimental Immunology
Branch**
Chief
Dr. Alfred Singer
301-496-5461

**Laboratory of Cell Regulation
and Carcinogenesis**
Chief
Dr. Glenn Merlino
301-496-4270

**Laboratory of Cellular
Oncology**
Chief
Dr. Douglas Lowy
301-496-9513

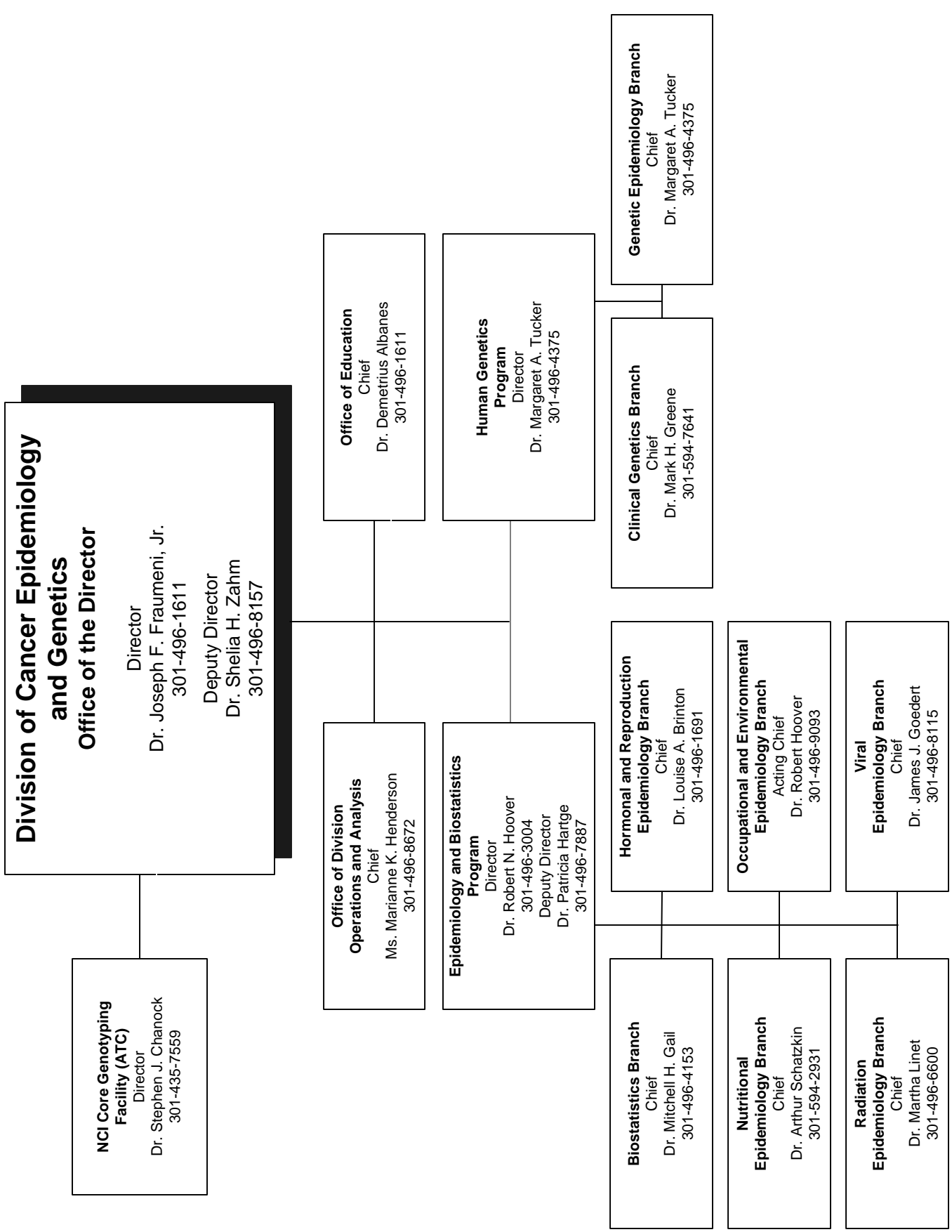
Laboratory of Genetics
Chief
Dr. Beverly Mock
301-496-1734

**Laboratory of Human
Carcinogenesis**
Chief
Dr. Curtis Harris
301-496-2048

Laboratory of Metabolism
Chief
Dr. Frank Gonzalez
301-435-5587

**Laboratory of Molecular
Biology**
Chief
Dr. Ira Pastan
301-496-4797

**Laboratory of Receptor
Biology and Gene Expression**
Chief
Dr. Gordon Hager
301-496-9867



**Division of Cancer Prevention
Office of the Director**

Director
Dr. Peter Greenwald
301-496-6616

Acting Deputy Director
Dr. Leslie Ford
301-496-0265

Associate Director for Clinical Research
Dr. Leslie Ford
301-496-0265

Office of Preventive Oncology
Acting Chief
Dr. Barbara Dunn
301-496-8640

**Chemoprevention Agent
Development Research Group**
Chief
Dr. James Crowell
301-496-8563

**Early Detection
Research Group**
Chief
Dr. Christine Berg
301-496-8544

**Nutritional Science
Research Group**
Chief
Dr. John Milner
301-496-8573

**Community Oncology and
Prevention Trials Research
Group**
Chief
Dr. Lori Minasian
301-496-8541

**Biometry Research
Group**
Chief
Dr. Phillip Prorok
301-496-8556

**Basic Prevention Science
Research Group**
Acting Chief
Dr. John Gohagan
301-496-3982

**Breast & Gynecologic Cancer
Research Group**
Chief
Dr. Karen Johnson
301-496-8526

**Gastrointestinal & Other Cancer
Research Group**
Acting Chief
Dr. Asad Umar
301-594-2684

**Prostate & Urologic Cancer
Research Group**
Chief
Dr. Howard Parnes
301-594-0920

**Lung & Upper Aerodigestive
Cancer Research Group**
Chief
Dr. Eva Szabo
301-435-1595

**Cancer Biomarkers
Research Group**
Chief
Dr. Sudhir Srivastava
301-435-1594

**Division of Cancer Control and
Population Sciences
Office of the Director**

Director
Dr. Robert Croyle
301-594-6776

Deputy Director for
Research Dissemination and Diffusion
Dr. Jon F. Kerner
301-594-7294

**Office of Cancer
Survivorship**
Director
Dr. Julia H. Rowland
301-402-8186

**Epidemiology and Genetics
Research Program**
Acting Associate Director
Dr. Debbie Winn
301-594-9499

**Analytic Epidemiology
Research Branch**
Acting Chief
Dr. Mukesh Verma
301-496-9600

**Clinical and Genetic
Epidemiology Research
Branch**
Chief
Dr. Debbie Winn
301-594-9499

**Behavioral Research
Program**
Acting Associate Director
Dr. Robert Croyle
301-594-6776

**Health Communications
and Informatics
Research Branch**
Acting Chief
Dr. Brad Hesse
301-594-9904

**Health Promotion
Research Branch**
Chief
Dr. Linda Nebeling
301-435-2841

**Tobacco Control
Research Branch**
Acting Chief
Dr. Cathy Backinger
301-496-8584

**Applied Cancer Screening
Research Branch**
Chief
Dr. Helen Meissner
301-435-1505

**Basic BioBehavioral
Research Branch**
Acting Chief
Dr. Paige McDonald
301-435-5037

**Surveillance Research
Program**
Associate Director
Dr. Brenda K. Edwards
301-496-8506

Cancer Statistics Branch
Chief
Dr. Benjamin Hankey
301-496-8510

**Statistical Research and
Applications Branch**
Chief
Dr. Eric Feuer
301-435-7739

**Applied Research
Program**
Associate Director
Dr. Rachel Ballard-Barbash
301-496-8500

**Health Services and
Economics Branch**
Chief
Dr. Martin Brown
301-435-7738

**Outcomes Research
Branch**
Chief
Dr. Steven Clauser
301-451-4402

**Risk Factor Monitoring
and Methods Branch**
Chief
Dr. Sue Krebs-Smith
301-435-7740

Division of Cancer Treatment and Diagnosis

Office of the Director

Director

Dr. James H. Doroshov
301-496-4291

Deputy Director

Dr. Joseph Tomaszewski
301-496-6711

Biometrics Research Branch

Chief
Dr. Richard Simon
301-496-4836

Office of Complementary and Alternative Medicine

Director
Dr. Jeffrey White
301-435-7480

Radiation Research Program

Associate Director
Dr. C. Norman Coleman
301-496-5457

Radiotherapy Development Branch

Acting Chief
Dr. Helen Stone
301-496-9360

Molecular Radiation Therapeutics Branch

Chief
Vacant
301-496-9360

Clinical Radiation Oncology Branch

Chief
Dr. Bhadrasain Vikram
301-496-6111

Cancer Therapy Evaluation Program

Associate Director
Dr. Michael Christian
301-496-6138

Investigational Drug Branch

Acting Chief
Dr. James Zwiebel
301-496-1196

Clinical Investigations Branch

Chief
Dr. Jeffrey Abrams
301-496-2522

Pharmaceutical Management Branch

Chief
Mr. Charles Hall
301-496-5725

Regulatory Affairs Branch

Chief
Dr. Dale Shoemaker
301-496-7912

Clinical Trials Monitoring Branch

Chief
Ms. Joan Mauer
301-496-0510

Clinical Grants and Contracts Branch

Chief
Dr. Roy Wu
301-496-8866

Developmental Therapeutics Program

Associate Director
Dr. Jerry M. Collins
301-496-8777

Information Technology Branch

Chief
Dr. Dan Zaharevitz
301-496-8747

Biological Testing Branch

Chief
Dr. Melinda Hollingshead
301-846-5065

Biological Resources Branch

Chief
Dr. Stephen Creekmore
301-846-1098

Toxicology and Pharmacology Branch

Chief
Dr. Joseph Tomaszewski
301-496-8777

Screening Technologies Branch

Chief
Dr. Robert Shoemaker
301-846-6845

Natural Products Branch

Acting Chief
Dr. David Newman
301-846-5387

Drug Synthesis and Chemistry Branch

Chief
Dr. Ven Narayanan
301-496-8795

Grants & Contracts Operations Branch

Chief
Dr. Mary Wolpert-DeFilippes
301-496-8783

Pharmaceutical Resources Branch

Chief
Dr. Rao Vishnuvajjala
301-496-8780

Cancer Diagnosis Program

Associate Director
Dr. Sheila Taube
301-496-8639

Diagnostics Evaluation Branch

Acting Chief
Dr. James Jacobson
301-402-4185

Resources Development Branch

Chief
Vacant
301-496-7147

Diagnostic Biomarkers and Technology Branch

Acting Chief
Dr. James Jacobson
301-402-4185

Cancer Imaging Program

Associate Director
Dr. Daniel Sullivan
301-496-9531

Diagnostic Imaging Branch

Chief
Dr. C. Carl Jaffe
301-435-9184

Molecular Imaging Branch

Chief
Vacant
301-496-9531

Image-Guided Intervention Branch

Chief
Vacant
301-496-9531

Imaging Technology Development Branch

Chief
Dr. Laurence Clarke
301-496-9531

**Division of Cancer Biology
Office of the Director**

Director
Dr. Dinah S. Singer
301-496-8636

Deputy Director
Dan Gallahan
301-496-8636

Cancer Etiology Branch
Chief
Dr. John Cole III
301-496-9740

Tumor Biology and Metastasis Branch
Chief
Dr. Suresh Mohla
301-435-1878

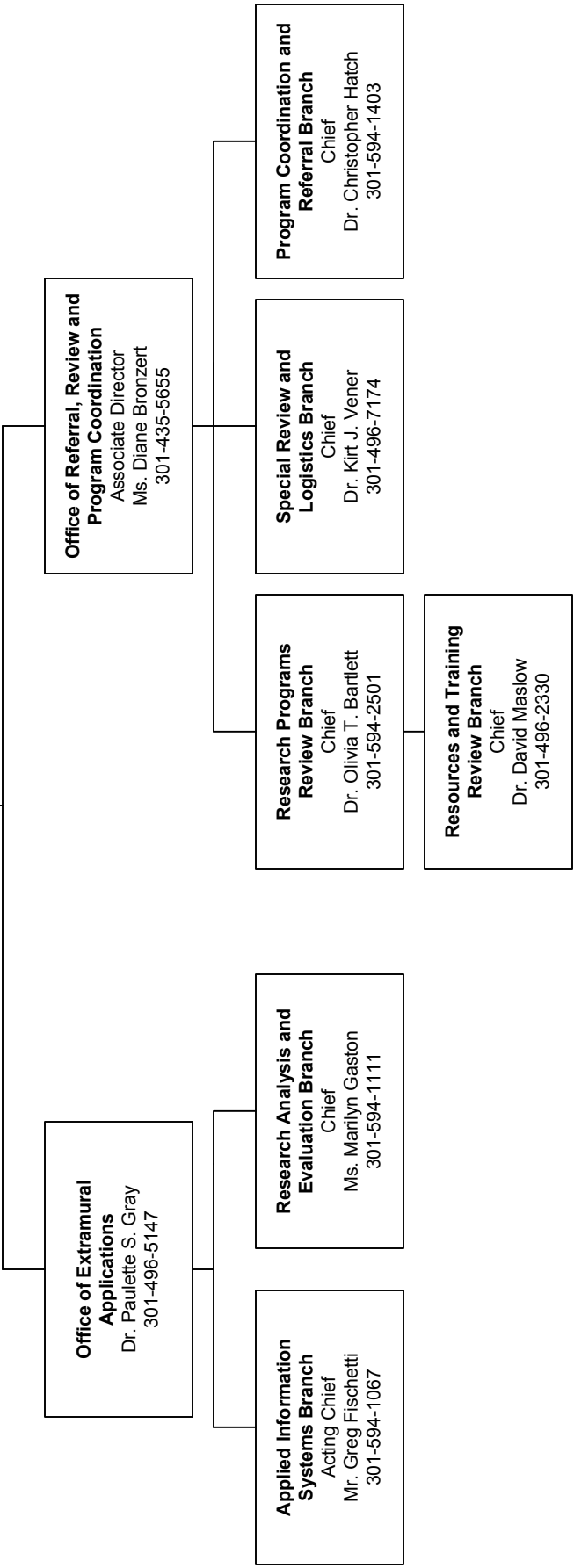
Cancer Immunology and Hematology Branch
Chief
Dr. R. Allan Mufson
301-496-7815

DNA and Chromosome Aberrations Branch
Chief
Dr. Judith Mietz
301-496-9326

Cancer Cell Biology Branch
Chief
Dr. Barbara Spalholz
301-496-7028

Structural Biology and Molecular Applications Branch
Acting Chief
Dr. Judy Mietz
301-496-9326

Division of Extramural Activities
 Director
 Dr. Paulette S. Gray
 301-496-5147
 Acting Deputy Director
 Dr. Paulette S. Gray
 301-496-5147
 Assistant Director
 Dr. Cedric W. Long
 301-496-9138



**Number of Deaths for the
Five Leading Cancer Sites
by Age Group and Sex**

All Ages		Under 15		15-34		35-54		55-74		75+	
Male	Female	Male	Female	Male	Female	Male	Female	Male	Female	Male	Female
Lung & Bronchus 89,575	Lung & Bronchus 68,431	Leukemia 261	Brain & ONS 207	Leukemia 510	Breast 405	Lung & Bronchus 8,590	Breast 8,700	Lung & Bronchus 46,871	Lung & Bronchus 33,209	Lung & Bronchus 34,008	Lung & Bronchus 28,874
Prostate 29,002	Breast 40,954	Brain & ONS 239	Leukemia 194	Brain & ONS 351	Leukemia 342	Colon & Rectum 3,082	Lung & Bronchus 6,274	Colon & Rectum 11,544	Breast 16,601	Prostate 20,785	Colon & Rectum 15,648
Colon & Rectum 26,881	Colon & Rectum 26,699	Endocrine 100	Endocrine 81	NHL 257	Cervix 232	Liver & IBD 2,178	Colon & Rectum 2,388	Pancreas 7,807	Colon & Rectum 8,515	Colon & Rectum 12,068	Breast 15,248
Pancreas 15,776	Pancreas 15,995	Soft Tissue 49	Soft Tissue 49	Bones & Joints 187	Brain & ONS 231	Pancreas 1,970	Ovary 2,108	Prostate 7,755	Ovary 6,487	Pancreas 5,954	Pancreas 8,648
Leukemia 12,051	Ovary 14,716	Bones & Joints 41	Bones & Joints 34	Colon & Rectum 186	Colon & Rectum 148	Brain & ONS 1,751	Cervix 1,472	Esophagus 5,319	Pancreas 6,127	Leukemia 5,499	Ovary 5,996

Source: National Center for Health Statistics (NCHS) Public-use file for 2004 deaths.
NHL = Non Hodgkin's Lymphoma

**Relationship of Cancer
to the Leading Causes
of Death in the
United States**

Rank	Cause	Number of Deaths	Age Adjusted Rate*	Percent of Total Deaths
	All Causes	2,397,269	797.9	100.0%
1	Heart Disease	652,450	215.9	27.2%
2	CANCER	553,880	185.7	23.1%
3	Cerebrovascular Diseases	150,069	49.6	6.3%
4	Emphysema, Bronchitis & Asthma	121,986	41.1	5.1%
5	Accidents	111,924	37.6	4.7%
6	Diabetes Mellitus	73,135	24.5	3.1%
7	Alzheimers	65,965	21.5	2.8%
8	Pneumonia & Influenza	59,664	19.6	2.5%
9	Nephritis & Nephrosis	42,478	14.1	1.8%
10	Septicemia	33,370	11.1	1.4%
11	Suicide and Self-Inflicted Injury	32,428	10.9	1.4%
12	Symptoms, Signs and Ill-Defined Conditions	30,007	9.9	1.3%
13	Chronic Liver Dis and Cirrhosis of the Liver	27,012	9.0	1.1%
14	Hypertension without Heart Disease	23,072	7.6	1.0%
15	Homicide and Legal Intervention	17,693	6.0	0.7%
	Other and Ill-Defined	402,136	133.6	16.8%

Source: NCHS Public-use file for 2004 deaths.
* Age adjusted rate per 100,000 Population

Estimated New Cancer Cases and Deaths by Sex for All Races 2007

Primary Site	Estimated New Cases			Estimated Deaths		
	Total	Male	Female	Total	Male	Female
All Sites *	1,444,920	766,860	678,060	559,650	289,550	270,100
Oral Cavity and Pharynx	34,360	24,180	10,180	7,550	5,180	2,370
Tongue	9,800	6,930	2,870	1,830	1,180	650
Mouth	10,660	6,480	4,180	1,860	1,110	750
Pharynx	11,800	9,310	2,490	2,180	1,620	560
Other Oral Cavity	2,100	1,460	640	1,680	1,270	410
Digestive System	271,250	147,390	123,860	134,710	74,500	60,210
Esophagus	15,560	12,130	3,430	13,940	10,900	3,040
Stomach	21,260	13,000	8,260	11,210	6,610	4,600
Small Intestine	5,640	2,940	2,700	1,090	570	520
Colon	112,340	55,290	57,050	52,180	26,000	26,180
Rectum	41,420	23,840	17,580			
Anus, Anal Canal, & Anorectum	4,650	1,900	2,750	690	260	430
Liver and Intrahepatic Bile Duct	19,160	13,650	5,510	16,780	11,280	5,500
Gallbladder & Other Biliary	9,250	4,380	4,870	3,250	1,260	1,990
Pancreas	37,170	18,830	18,340	33,370	16,840	16,530
Other Digestive	4,800	1,430	3,370	2,200	780	1,420
Respiratory System	229,400	127,090	102,310	164,840	92,910	71,930
Larynx	11,300	8,960	2,340	3,660	2,900	760
Lung and Bronchus	213,380	114,760	98,620	160,390	89,510	70,880
Other Respiratory	4,720	3,370	1,350	790	500	290
Bones and Joints	2,370	1,330	1,040	1,330	740	590
Soft Tissues	9,220	5,050	4,170	3,560	1,840	1,720
Skin (excl. basal & squamous)	65,050	37,070	27,980	10,850	7,140	3,710
Melanoma-skin	59,940	33,910	26,030	8,110	5,220	2,890
Other non-epithelial skin	5,110	3,160	1,950	2,740	1,920	820
Breast	180,510	2,030	178,480	40,910	450	40,460
Genital Organs	306,380	228,090	78,290	55,740	27,720	28,020
Cervix Uteri	11,150		11,150	3,670		3,670
Endometrium (uterus)	39,080		39,080	7,400		7,400
Ovary	22,430		22,430	15,280		15,280
Vulva	3,490		3,490	880		880
Vagina and other genital organs, female	2,140		2,140	790		790
Prostate	218,890	218,890		27,050	27,050	
Testis	7,920	7,920		380	380	
Penis and other genital organs, male	1,280	1,280		290	290	
Urinary System	120,400	82,960	37,440	27,340	18,100	9,240
Urinary Bladder	67,160	50,040	17,120	13,750	9,630	4,120
Kidney and Renal Pelvis	51,190	31,590	19,600	12,890	8,080	4,810
Ureter and other urinary organs	2,050	1,330	720	700	390	310
Eye and Orbit	2,340	1,310	1,030	220	110	110
Brain and Other Nervous System	20,500	11,170	9,330	12,740	7,150	5,590
Endocrine Glands	35,520	9,040	26,480	2,320	1,030	1,290
Thyroid	33,550	8,070	25,480	1,530	650	880
Other Endocrine	1,970	970	1,000	790	380	410
Lymphomas and Myelomas	71,380	38,670	32,710	19,730	10,370	9,360
Hodgkin Disease	8,190	4,470	3,720	1,070	770	300
Non-Hodgkin Lymphoma	63,190	34,200	28,990	18,660	9,600	9,060
Multiple Myeloma	19,900	10,960	8,940	10,790	5,550	5,240
Leukemia	44,240	24,800	19,440	21,790	12,320	9,470
Lymphocytic Leukemias	20,540	12,020	8,520	5,920	3,380	2,540
Myeloid Leukemias	17,980	9,630	8,350	9,480	5,260	4,220
Other Leukemias	5,720	3,150	2,570	6,390	3,680	2,710
All Other Sites	32,100	15,720	16,380	45,230	24,440	20,790

Source: Cancer Facts & Figures-2007, American Cancer Society (ACS), Atlanta, Georgia 2007.

Excludes basal and squamous cell skin and in situ carcinomas except urinary bladder.

Incidence projections are based on rates from the North American Association of Central Cancer

Registries (NAACCR) 1995-2003. Estimated deaths come from the NCHS public use data file for the total US.

* Estimated deaths for colon & rectum cancers are combined.

The Cost of Cancer

Cancer treatment spending has risen but remains stable in proportion to total U.S. treatment spending.

The financial costs of cancer treatment are a burden to people diagnosed with cancer, their families, and society as a whole. Cancer treatment accounted for about \$74.0 billion in 2005. This is just under 5 percent of total U.S. spending for medical treatment. The additional economic burden of cancer due to morbidity and premature mortality is estimated to be \$135.9 billion resulting in a total economic burden of cancer in 2005 of \$209.9 billion.

Year	Amount (\$ in millions)	Percent of All Health Care Expenditures
1963	\$1,279	4.35%
1972	3,872	4.96%
1980	13,049	6.01%
1985	18,104	4.81%
1990	27,458	4.46%
1995	41,200	4.69%
2002	60,900	4.57%
2004	72,006	4.67%
2005	74,000	4.60%

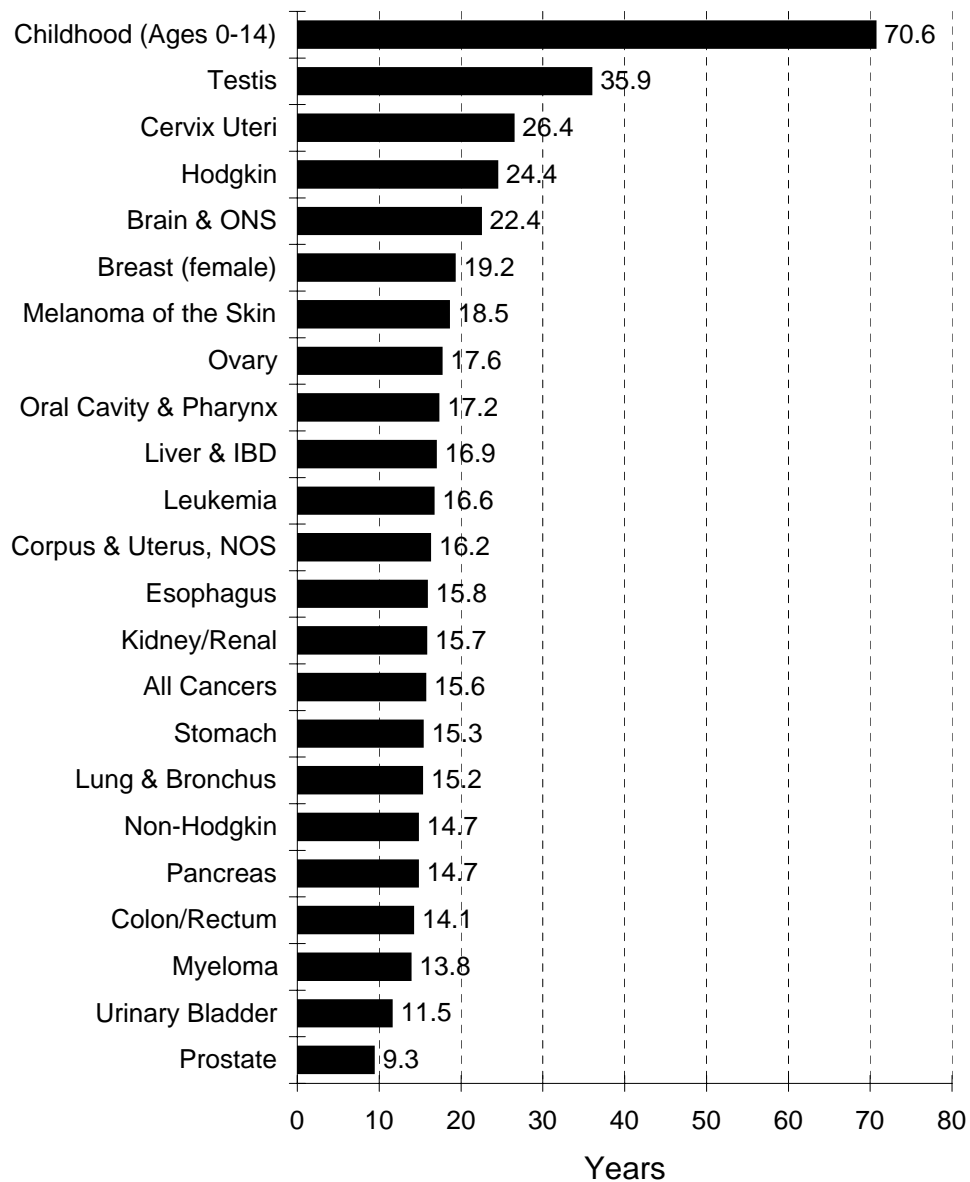
Sources:

Ries LAG, Eisner MP, Kosary CL, Hankey BF, Miller MA, Clegg L, Mariotto A, Feuer EJ, Edwards BK (eds). *SEER Cancer Statistics Review, 1975-2001*, National Cancer Institute, Bethesda, MD

Brown ML, Riley GF, SchusslerN, Etzioni RD. Estimating health care costs related to cancer treatment from SEER-Medicare data. *Medical care* 2002 Aug; 40 (8 Suppl):IV-104-17.

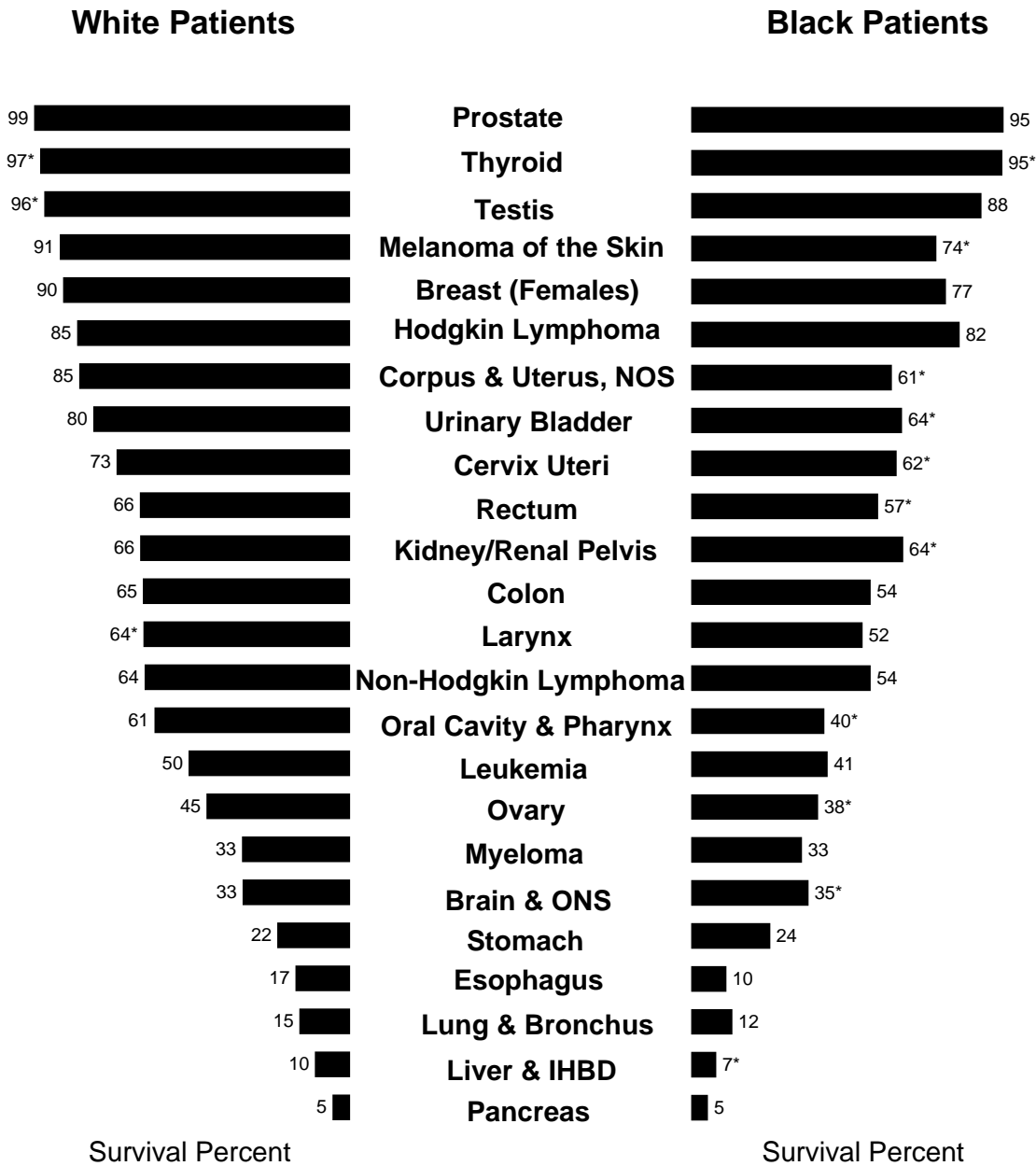
NHLBI Fact Book - 2003, 2005. National Heart, Lung and Blood Institute, Bethesda. Estimates by NHLBI; data from NCHS, HCFA, the Bureau of the Census, and the Institute for Health and Aging, University of California, San Francisco.

Average Years of Life Lost Per Person Dying of Cancer All Races, Both Sexes, 2004



Source: NCHS public-use data and 2003 life tables.

**5 Year Relative Survival Rates by Cancer Site
SEER Program 1996-2003
Males and Females**



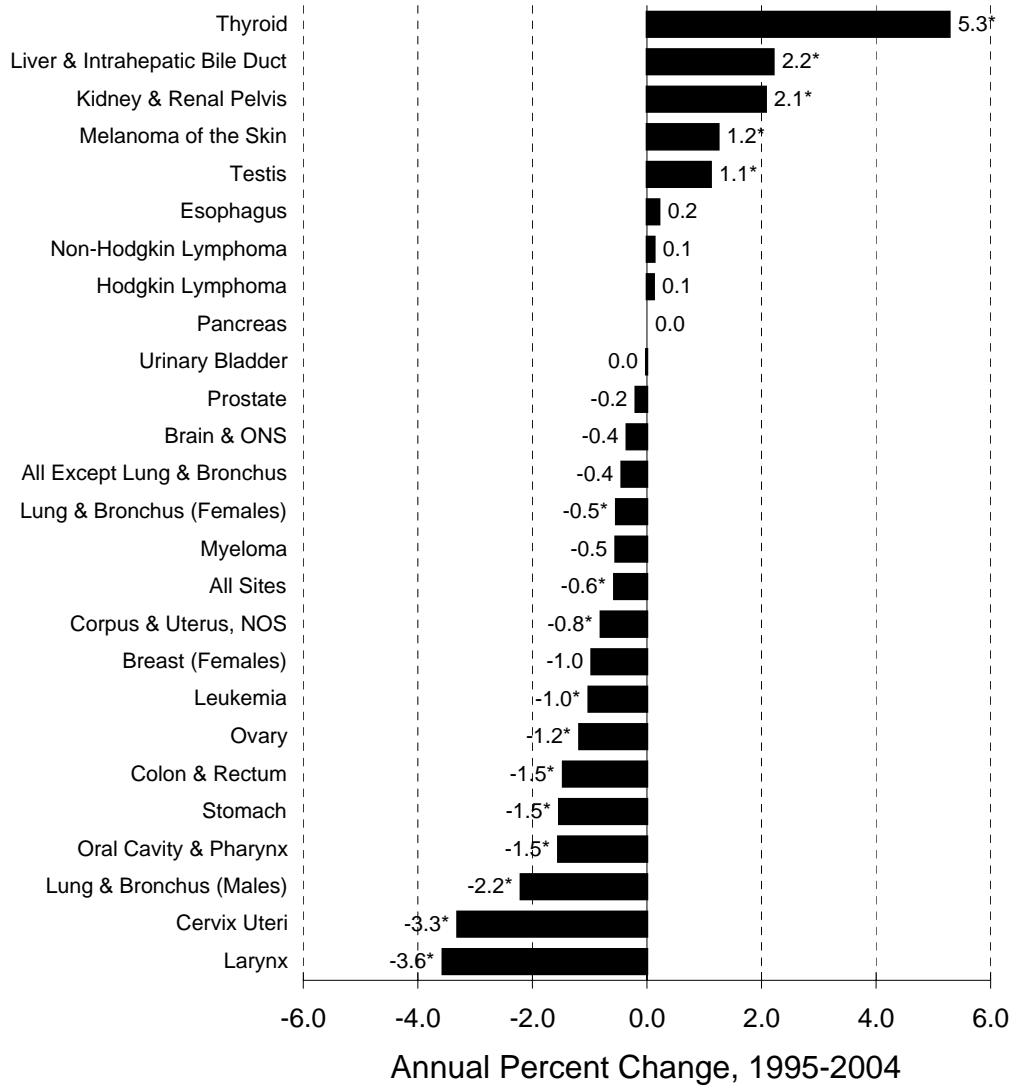
Data From NCI SEER Program
<http://www.seer.cancer.gov/>

Data source: NCI SEER 17 Areas (San Francisco, Connecticut, Detroit, Hawaii, Iowa, New Mexico, Seattle, Utah, Atlanta, San Jose/Monterey, Los Angeles, Alaska Natives, Rural Georgia, California excluding SF/SJM/LA, Kentucky, Louisiana, and New Jersey).

* The relative cumulative rate increased from a prior interval and has been adjusted.
The 5-year relative survival rate is calculated using 60 monthly intervals.

Cancer Incidence Rates

Annual Percent Changes from 1995 to 2004

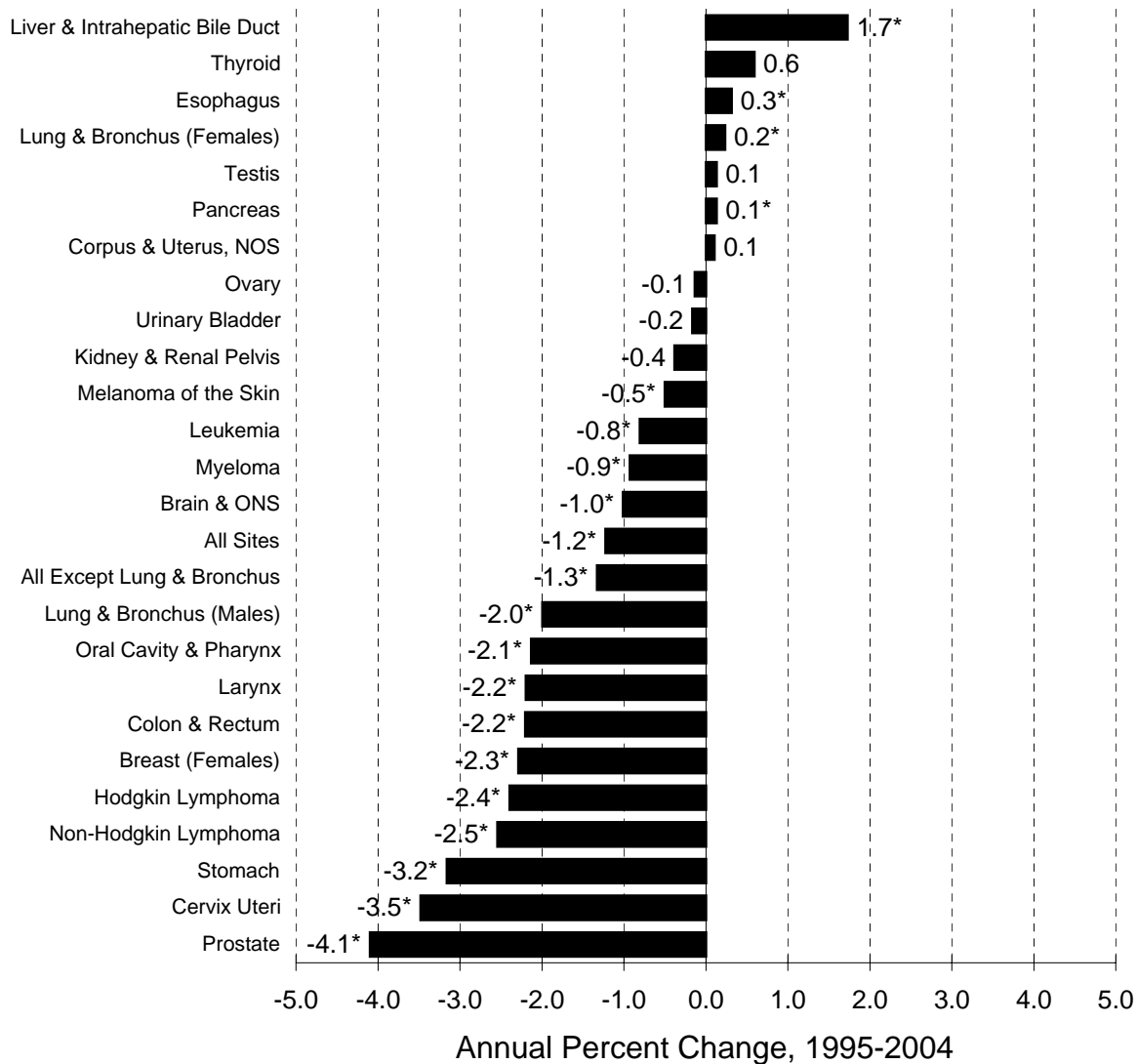


Data source: NCI SEER 13 Areas (San Francisco, Connecticut, Detroit, Hawaii, Iowa, New Mexico, Seattle, Utah, Atlanta, San Jose/Monterey, Los Angeles, Alaska Natives, and Rural Georgia).

* The annual percent change is significantly different from zero ($p < .05$).

Cancer Mortality Rates

Annual Percent Changes from 1995 to 2004



Data source: NCHS public-use data files.

* The annual percent change is significantly different from zero ($p < .05$).

Cancer Incidence Rates By Race

SEER, 2000-2004

Cancer Site	Incidence Rates per 100,000				
	Blacks	Whites	Hispanics	Asian/ Pacific Islander	American Indian/ Alaska Native
All Sites	504.1	477.5	356.0	314.9	297.6
Males	663.7	556.7	421.3	359.9	321.2
Females	396.9	423.9	314.2	285.8	282.4
Oral Cavity and Pharynx	11.1	10.6	6.2	7.9	7.1
Esophagus	6.2	4.6	3.0	2.5	4.1
Stomach	12.5	7.1	12.3	14.3	11.5
Colon and Rectum	62.1	51.2	39.3	41.6	40.8
Colon excluding Rectum	47.8	37.0	27.2	28.1	29.2
Rectum and Rectosigmoid Junction	14.3	14.2	12.1	13.5	11.6
Liver and IHBD	7.6	5.2	9.7	13.9	9.7
Pancreas	15.0	11.2	10.5	9.0	9.2
Larynx	6.0	3.7	2.7	1.5	1.7
Lung and Bronchus	76.6	65.7	33.3	39.4	44.0
Males	110.6	81.0	44.7	55.1	53.7
Females	53.7	54.6	25.2	27.7	36.7
Melanoma of the Skin	1.0	21.6	4.5	1.5	2.9
Breast (females)	118.3	132.5	89.3	89.0	69.8
<50 years	42.9	42.2	32.4	37.4	25.8
50+ years	315.8	369.1	238.2	224.0	184.9
Cervix Uteri	11.4	8.5	13.8	8.0	6.6
Corpus and Uterus, NOS	19.6	24.3	17.4	16.2	15.1
Ovary	10.1	14.3	11.5	9.7	11.2
Prostate	255.5	161.4	140.8	96.5	68.2
Testis	1.4	6.3	3.8	1.7	3.8
Urinary Bladder	12.6	23.0	11.6	9.2	7.0
Kidney and Renal Pelvis	14.3	13.3	12.4	6.3	14.7
Brain and Other Nervous System	4.1	7.0	5.3	3.4	2.8
Thyroid	5.1	8.9	7.5	8.5	5.3
Hodgkin lymphoma	2.4	2.9	2.2	1.2	^
Non-Hodgkin lymphoma	14.6	20.2	16.5	13.2	10.4
All Sites Except Lung and Bronchus	427.5	411.8	322.7	275.5	253.6
Males	553.2	475.8	376.6	304.9	267.5
Females	343.2	369.3	289.0	258.2	245.7

Data source: NCI SEER 17 Areas (San Francisco, Connecticut, Detroit, Hawaii, Iowa, New Mexico, Seattle, Utah, Atlanta, San Jose/Monterey, Los Angeles, Alaska Natives, Rural Georgia, California excluding SF/SJM/LA, Kentucky, Louisiana, and New Jersey).
 NCI's SEER Program, adjusted to the 2000 US population age distribution.
 Rates for Hispanics are based on NHIA and exclude cases diagnosed in Alaska and Kentucky.
 Rates for American Indian/Alaska Native are based on the CHSDA counties.
 ^ Statistic not shown. Rate based on less than 25 cases for the time interval.

Cancer Mortality Rates By Race United States, 2000-2004

Cancer Site	Mortality Rates per 100,000					
	Blacks	Whites	Hispanics ^a	Asian/ Pacific Islander	Am Ind/ AK Nat ^b (Total US)	Am Ind/ AK Nat ^c (CHSDA Counties)
All Sites	238.8	190.7	129.1	115.5	128.6	160.4
Males	321.8	234.7	162.2	141.7	152.2	187.9
Females	189.3	161.4	106.7	96.7	112.0	141.2
Oral Cavity and Pharynx	3.9	2.5	1.7	2.3	2.1	2.5
Esophagus	6.0	4.3	2.4	1.8	2.9	3.8
Stomach	8.2	3.7	6.8	8.0	5.0	7.2
Colon and Rectum	26.7	18.9	13.6	12.3	13.0	17.0
Liver and IHBD	6.5	4.5	7.6	10.6	6.3	8.4
Pancreas	13.8	10.4	8.3	7.4	6.3	7.5
Larynx	2.5	1.2	0.9	0.4	0.9	1.1
Lung and Bronchus	62.0	55.0	23.6	26.9	34.3	39.9
Males	95.8	72.6	36.0	38.3	42.8	49.6
Females	39.8	42.1	14.6	18.5	27.8	32.7
Melanoma of the Skin	0.4	3.0	0.7	0.3	0.7	1.0
Breast (females)	33.8	25.0	16.1	12.6	13.9	16.1
<50 years	9.8	5.1	4.0	3.7	2.9	3.5
50+ years	96.9	77.0	47.7	36.0	42.7	48.9
Cervix Uteri	4.9	2.3	3.3	2.4	2.7	4.0
Corpus and Uterus, NOS	7.1	3.9	3.1	2.4	2.3	2.9
Ovary	7.4	9.2	6.1	4.8	5.5	7.1
Prostate	62.3	25.6	21.2	11.3	18.0	21.5
Testis	0.2	0.3	0.2	0.1	^	^
Urinary Bladder	3.7	4.5	2.4	1.8	1.6	1.9
Kidney and Renal Pelvis	4.1	4.3	3.6	1.7	4.8	6.5
Brain and Other Nervous System	2.6	4.8	2.8	2.0	1.9	2.1
Thyroid	0.5	0.5	0.6	0.6	0.4	^
Hodgkin lymphoma	0.4	0.5	0.4	0.2	^	^
Non-Hodgkin lymphoma	5.2	7.9	5.7	4.8	4.3	5.5
All Sites Except Lung and Bronchus	176.8	135.7	105.5	88.6	94.3	120.5
Males	226.0	162.1	126.2	103.5	109.4	138.4
Females	149.5	119.3	92.1	78.2	84.2	108.5

Data source: NCHS public-use data files.

^a Rates for Hispanics exclude cases diagnosed in Minnesota, New Hampshire, and North Dakota.

^b Rates for American Indian/Alaska Native are based on the entire US.

^c Rates for American Indian/Alaska Native are based on the CHSDA counties.

^ Statistic not shown. Rate based on less than 25 cases for the time interval.

**The Prevalence of Cancer:
Estimated Number of Persons Diagnosed With Cancer
United States, 2003**

Primary Site	Estimated Prevalence		
	Total [^]	Males	Females
ALL SITES^a	10,495,985	4,692,382	5,803,603
Brain and Other Nervous System	111,212	58,750	52,462
Breast	2,369,036	12,241	2,356,795
Cervix	253,781		253,781
Colon and Rectum	1,068,198	514,789	553,409
Corpus and Uterus	570,806		570,806
Esophagus	24,065	18,104	5,961
Hodgkin Lymphoma	147,387	76,517	70,870
Kidney and Renal Pelvis	230,148	136,080	94,068
Larynx	97,313	78,071	19,242
Leukemia	199,013	112,324	86,689
Acute Lymphocytic Leukemia	50,939	28,078	22,861
Lung and Bronchus	354,989	173,431	181,558
Melanoma of the Skin	662,433	320,178	342,255
Non-Hodgkin Lymphoma	364,485	189,637	174,848
Oral Cavity and Pharynx	235,633	150,051	85,582
Ovary	171,840		171,840
Pancreas	27,688	13,302	14,386
Prostate	1,937,798	1,937,798	
Stomach	59,853	34,299	25,554
Testis	171,430	171,430	
Thyroid	347,424	79,275	268,149
Urinary Bladder	505,765	372,313	133,452
Childhood (0-19 yrs)	227,872 [#]	117,016 [#]	110,856 [#]

Source: U.S. 2003 cancer prevalence rates are based on 2003 cancer prevalence proportions from the nine SEER registries and 1/1/2003 population estimates based on the average of 2002 and 2003 population estimates from the U.S. Bureau of the Census.

^a The All Sites figures are estimates based on all cancer sites, not just those listed here.

[^] The total column represents prevalence estimates using the completeness index method (Capocaccia et. al. 1997, Merrill et. al. 2000). Totals are obtained by summing males and females and not by modeling.

[#] Current methodology does not allow for the estimation of complete prevalence for childhood cancer. Estimates shown are 28 year limited-duration prevalence.

Fiscal Year 2006 Budget

(Dollars in Thousands)

A. Actual Obligations Resulting From Appropriated Funds:

FY 2006 Appropriation	\$4,841,774
Labor/HHS/ ED Recission	-48,418
NIH 1% Transfer for NIH Roadmap Activities	-42,834
HHS Transfer for CMS Activities	-3,293
Lapse	-4
Actual Obligations Subtotal	4,747,225

B. Reimbursable Obligations:

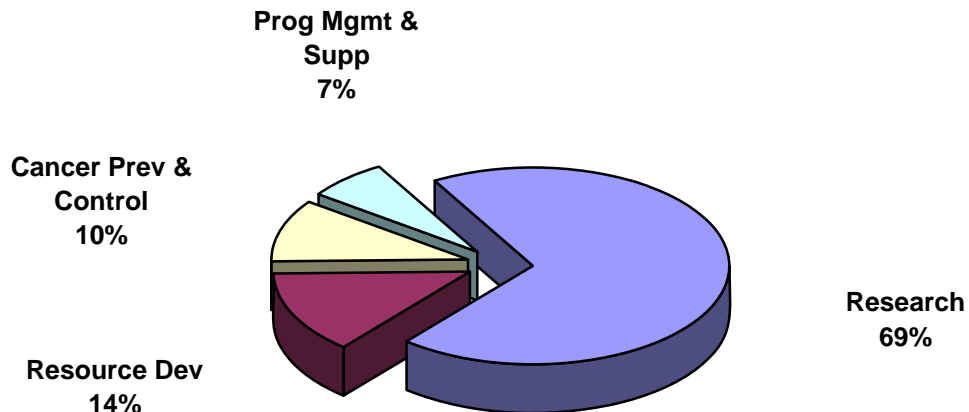
Reimbursements	13,374
----------------	--------

C. Total NCI Obligations: **\$4,760,599 ***

*EXCLUDES projects awarded with Stamp Out Breast Cancer funds.

Program Structure Fiscal Year 2006

(Dollars in Thousands)

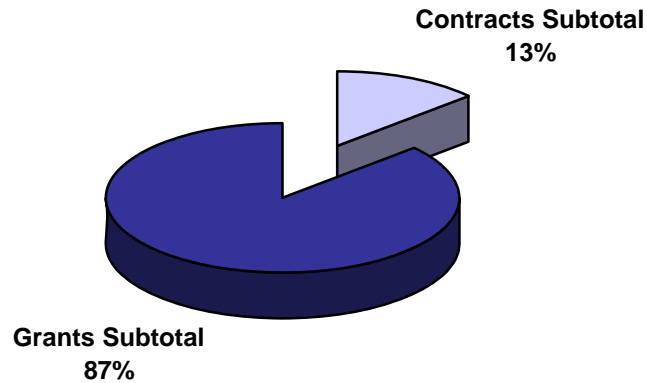


Budget Activity	Amount	Percent
Research:		
Cancer Causation	\$1,072,156	22.6%
Detection and Diagnosis Research	394,290	8.3%
Treatment Research	1,049,938	22.1%
Cancer Biology	776,758	16.4%
Subtotal Research	3,293,143	69.4%
Resource Development:		
Cancer Centers Support	464,700	9.8%
Research Manpower Development	183,137	3.9%
Buildings and Facilities	7,920	0.2%
Subtotal Resource Development	655,757	13.9%
Cancer Prevention and Control	486,541	10.2%
Program Management and Support	311,785	6.5%
*Total NCI	4,747,225	100.0%

*EXCLUDES projects awarded with Stamp Out Breast Cancer funds.

Extramural Funds Fiscal Year 2006

(Dollars in Thousands)



Mechanism	Amount	Percent
Contracts:		
R&D Contracts	307,376	8.3%
Interagency Agreements	40,390	1.1%
Cancer Control Contracts	137,136	3.7%
Buildings and Facilities	7,920	0.2%
Construction Contracts	0	0.0%
Subtotal Contracts	492,822	13.3%
Grants:		
Research Project Grants	2,156,866	58.0%
Cancer Centers/Specialized Centers/SPORES	463,860	12.5%
NRSA	66,618	1.8%
Other Research Grants	327,093	8.8%
Cancer Control Grants	213,482	5.7%
Construction Grants	0	0.0%
Subtotal Grants	3,227,919	86.8%
Total Extramural Funds	3,720,741	100.0%
Total Intramural/RMS/Control Inhouse	1,026,484	
*Total NCI	\$4,747,225	

*EXCLUDES projects awarded with Stamp Out Breast Cancer funds.

NCI Obligations by Mechanism, Fiscal Year 2006

(Dollars in Thousands)

		Number	Amount	% of Total
Research Project Grants	Non-Competing	3,892	1,596,655	33.6%
	Administrative Supplements	(290)	49,089	1.0%
	Competing	1,280	415,067	8.7%
	Subtotal, without SBIR/STTR Grants	5,172	2,060,811	43.4%
	SBIR/STTR Grants	263	96,055	2.0%
	Subtotal, Research Project Grants	5,435	2,156,866	45.4%
Centers & SPOREs	Cancer Centers Grants-P20/P30	61	265,002	5.6%
	SPOREs-P50	58	124,933	2.6%
	Other Specialized Centers	44	73,925	1.6%
	Subtotal, Centers	163	463,860	9.8%
Other Research	Career Program			0.0%
	Temin & Minority Mentored Awards-K01	136	18,825	0.4%
	Estab. Inv. Award-K05	17	2,173	0.1%
	Preventive Oncology-K07	117	14,657	0.3%
	Clinical Investigator-K08	136	16,851	0.4%
	Clinical Oncology-K12	16	9,438	0.2%
	Transitional Career Development-K22	38	5,818	0.1%
	Mentored Patient Oriented RCDA-K23	60	7,617	0.2%
	Mid-Career Invest. & Patient Orient. Res-K24	17	2,557	0.1%
	Mentored Quant. Res Career-K25	11	1,506	0.0%
	Inst. Curr. Award-K30	2	1,394	0.0%
	Subtotal, Career Program	550	80,836	1.7%
	Cancer Education Program-R25	99	34,561	0.7%
	Clinical Cooperative Groups-U10	63	145,919	3.1%
	Minority Biomedical Support-S06	0	2,914	0.1%
	Scientific Evaluation-U09/T09	0	0	0.0%
	Continuing Education	7	670	0.0%
	Resource Grants-R24/U24	53	48,400	1.0%
	Explor Coop Agreement-U56	26	12,154	0.3%
	Conference Grants-R13	85	1,639	0.0%
	Subtotal, Other Research Grants	883	327,093	6.9%
	Subtotal, Research Grants		6,481	2,947,819
NRSA Fellowships	<i>Trainees:</i>	1,433	66,618	1.4%
R&D Contracts	R&D Contracts	295	339,605	7.2%
	SBIR Contracts	31	8,161	0.2%
	Subtotal, Contracts	326	347,766	7.3%
Intramural Research	Program	1,766	561,208	11.8%
	NIH Management Fund/SSF Assessment		126,133	2.7%
	Subtotal, Intramural Research <i>FTEs:</i>	1,766	687,341	14.5%
RMS	Research Mgmt and Support	624	163,151	3.4%
	NIH Management Fund/SSF Assessment		20,984	0.4%
	Subtotal, RMS <i>FTEs:</i>	624	184,135	3.9%
Cancer Prevention and Control	Cancer Control Grants	199	213,482	4.5%
	Cancer Control Contracts	156	137,137	2.9%
	Inhouse	387	139,216	2.9%
	NIH Management Fund/SSF Assessment		15,792	0.3%
	Subtotal, Prevention and Control <i>FTEs:</i>	387	505,625	10.7%
Buildings and Facilities		7,920	0.2%	
Construction		0	0.0%	
*Total NCI	<i>FTEs:</i>	2,777	4,747,224	100.0%

*EXCLUDES projects awarded with Stamp Out Breast Cancer funds.

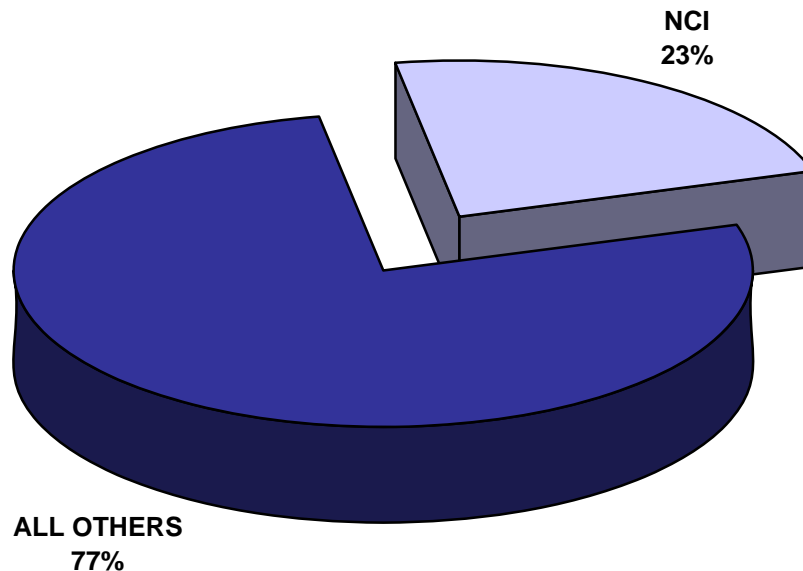
Division Obligations by Mechanism, Fiscal Year 2006

(Dollars in Thousands)

CCR	DCEG	DCTD	DCB	DCCPS	DCP	DEA	OD	Research Grants	Program Support
								1,537,934	58,721
								49,089	
								415,067	
								2,002,090	58,721
								96,055	
								2,098,145	58,721
		5,083					259,919		
							124,933		
		1,382	21,394	9,355			41,794		
		6,465	21,394	9,355			426,646		
							18,825		
							2,173		
							14,657		
							16,851		
							9,438		
							5,818		
							7,617		
							2,557		
							1,506		
							1,394		
							80,836		
							34,561		
								145,919	
								2,914	
								670	
								48,400	
								12,154	
								1,639	
							34,561	211,696	0
		6,465	21,394	9,355			542,043	2,309,841	58,721
							66,618		
	17,773	101,804	1,195	32,220			129,917		56,696
	634	3,243	755	2,199	1,097		233		
	18,407	105,047	1,950	34,419	1,097		130,150		56,696
367,376	55,021	674					109,448		28,689
367,376	55,021	674					109,448		154,822
		29,960	11,898			24,643	77,282		19,368
									20,984
		29,960	11,898			24,643	77,282		40,352
		20,861		37,572	128,092		26,957		
	3,793	7,606		32,549	70,601		22,588		
127	7,635	6,016		28,673	18,887		75,104		2,774
									15,792
127	11,428	34,483		98,794	217,580		124,649		18,566
							7,920		
367,503	84,856	176,629	35,242	142,568	218,677	24,643	1,058,109	2,309,841	329,157

NIH Management Fund, Service & Supply Fund, and GSA Rent Fiscal Year 2006

(Dollars in Thousands)



DISTRIBUTION OF NCI PAYMENT	Amount	Share of NCI
Clinical Center	\$90,762	55.7%
Center for Scientific Review	8,486	5.2%
Center for Information Technology	8,658	5.3%
Service and Supply Fund	13,907	8.5%
Other Research Services	15,296	9.4%
Other OD	25,800	15.8%
*Total Management Fund and SSF	162,909	100.0%
Other NIH Institutes Management Fund and SSF	544,951	
Total NIH Management Fund and SSF	\$707,860	

*Excludes GSA Rental Payments for Space which totaled \$51,929 in FY 2006

The Management Fund provides for the financing of certain common research and administrative support activities which are required in the operations of NIH:

Clinical Center: Admissions and followup, anesthesiology, diagnostic x-ray, nuclear medicine, clinical pathology, blood bank, rehabilitation medicine, pharmacy, medical records, nursing services, patient nutrition service, housekeeping services, laundry, and social work

Center for Scientific Review: Initial scientific review of applications, assignment of research grant applications to institutes

Center for Information Technology: Research and development program in which concepts and methods of computer science are applied to biomedical problems

GSA Rental Payments for Space: All building rental, including utilities and guard services.

Other Research Services: Procurement, safety, engineering, biomedical engineering, veterinary resources, and library

Service & Supply Fund: Animal support, collaborative research, conference services, hazardous waste management, interpreting services, library, occupational health and safety, property management support and radiation safety

Special Sources of Funds

CRADAs

As a result of the Federal Technology Transfer Act of 1986 (PL 99-502), government laboratories are authorized to enter into Cooperative Research and Development Agreements (CRADAs) with private sector entities. Licensing agreements are usually incorporated into the CRADA document which addresses patent rights attributable to research supported under the CRADA.

NCI CRADA Receipts Deposited to the U.S. Treasury
(Dollars in Thousands)

Fiscal Year	Carryover from Prior Year	Collections	Obligations
1996	3,864	2,017	1,394
1997	4,486	13,378	6,639
1998	11,217	5,351	7,266
1999	9,302	3,645	4,707
2000	8,240	2,717	4,618
2001	6,339	5,295	2,770
2002	8,864	5,048	2,380
2003	11,533	5,221	5,361
2004	11,351	5,080	5,469
2005	10,962	6,858	4,253
2006	13,567	6,133	7,125

Royalty Income

NCI retains a portion of the royalty income generated by the patents related to NCI-funded research. A major portion of this royalty income is used to reward employees of the laboratory, further scientific exchange and for education and training in accordance with the terms of the Federal Technology Transfer Act (PL 99-502). Receipts are also used to support costs associated with processing and collecting royalty income and for technology transfer efforts in NCI and NIH.

NCI Royalty Income Funding History
(Dollars in Thousands)

Years	Collections*	Inventor Payments	Other
1996/1997	13,598	2,175	11,423
1997/1998	9,814	2,321	7,493
1998/1999	22,716	5,084	17,632
1999/2000	21,160	4,695	16,465
2000/2001	37,040	4,811	32,229
2001/2003	27,443	6,210	21,233
2002/2004	42,565	3,961	38,604
2003/2005	27,271	5,262	22,009
2004/2006	26,923	4,950	21,973
**2005/2007	34,086	5,749	28,337
**2006/2008	29,811	5,321	24,490

*Does not include assessments by NIH.

**2005/2007 and 2006/2008 collections and payments are estimates.

Stamp Out Breast Cancer

The Stamp Out Breast Cancer Act (PL 105-41) was established in August 1997 and extended in July 2000 (PL 106-253) and again in November 2005 (PL 109-100). This act allows postal customers to contribute to funding for breast cancer research through their voluntary purchases of special rate postage stamps from the U.S. Postal Service. The Act required the USPS to transfer 70% to NIH and 30% to the DOD of the funds collected above the postage costs and administrative costs. As of November 2006, NCI has received \$36,665,602. NCI has used these funds for research projects directed towards breast cancer research. Thus far, three major programs have been funded -- the "Insight Awards to Stamp Out Breast Cancer," the "Breast Cancer Research Stamp Exception Program," and the "Breast Cancer Premalignancy Program." In FY 2006, \$6.896 million was obligated on Breast Cancer Stamp Fund programs.

Funding for Various Research Areas

(Dollars in Millions)

The National Cancer Institute reports how appropriated funds are spent in a number of different categories or classifications including specific cancer sites, cancer types, diseases related to cancer, as well as types of research mechanisms. The table below represents funding levels for frequently requested research areas. These research areas do not represent the entire NCI research portfolio. Funding for these areas can overlap and do not add to the total NCI budget. For example, dollars for a clinical trial on breast cancer research would be included in both the Breast Cancer and the Clinical Trials lines in the table below. Similarly, a basic cancer research project may be relevant to cervical, uterine and ovarian cancers and relevant funding would be included in the figures for all three sites.

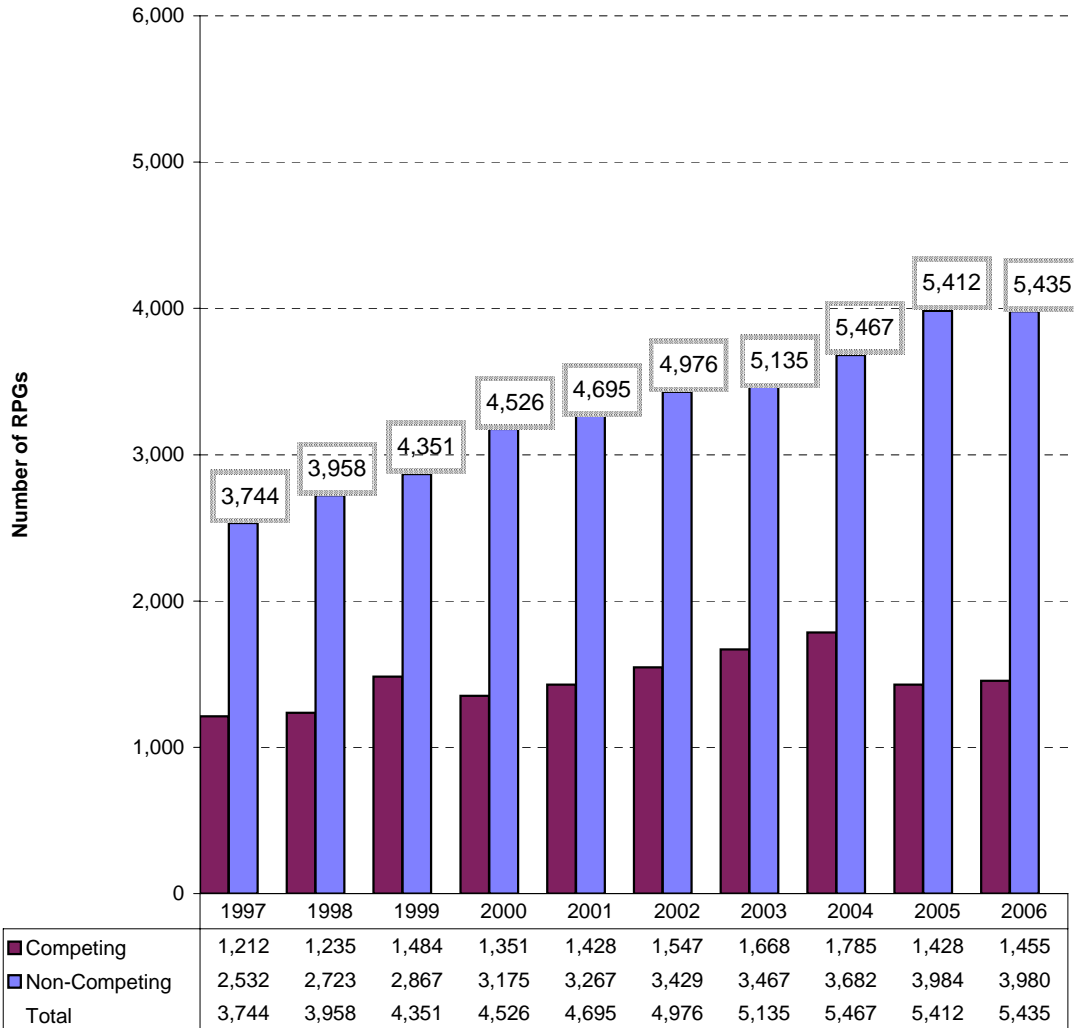
Disease Area	2002 Actual	2003 Actual	2004 Actual	2005 Actual	2006 Actual
Total NCI Budget	\$4,176.7	\$4,592.3	\$4,723.9	\$4,794.7	\$4,747.2
AIDS	254.4	263.4	267.0	265.9	253.7
Brain & CNS	95.2	111.5	132.3	124.9	130.3
Breast Cancer	522.6	548.7	566.2	560.1	584.7
Cervical Cancer	67.6	79.0	79.0	81.7	83.3
Clinical Trials	702.1	799.5	800.0	781.8	822.3
Colorectal Cancer	245.0	261.6	262.0	253.1	244.1
Head and Neck Cancers*	58.9	77.7	88.2	89.5	71.3
Hodgkins Disease	11.8	16.5	17.4	17.2	20.9
Leukemia	177.2	200.9	214.7	220.6	223.5
Liver Cancer	62.5	63.7	63.0	60.5	62.7
Lung Cancer	237.5	273.5	276.5	266.1	242.9
Melanoma	82.3	90.7	94.9	102.9	108.0
Multiple Myeloma	20.8	26.3	23.9	28.2	30.3
Non Hodgkin's Lymphoma	85.6	95.2	99.6	107.0	114.1
Ovarian Cancer	93.5	99.4	99.5	97.7	95.1
Pancreatic Cancer	33.1	42.3	52.7	66.7	74.2
Prostate Cancer	278.4	305.2	308.5	309.0	293.2
Stomach Cancer	11.4	13.4	11.6	11.0	11.5
Uterine Cancer	23.1	25.5	27.0	31.1	19.4

*The print edition of the FY 2005 NCI Fact Book incorrectly reported a subset of Head and Neck Cancers as the total for Head and Neck Cancer. The correct funding amount is reflected here in the FY 2005 column. In FY 2006, the definition for this category was amended resulting in a lower funding level. Without the change, Head and Neck Cancer funding would have been \$91.8 million for FY 2006.

Research Project Grants Number of Awards

Fiscal Years 1997-2006

Includes Small Business Innovation Research and Small Business Technology Transfer Awards



*EXCLUDES projects awarded with Stamp Out Breast Cancer Funds.

RPGs Requested and Awarded

Fiscal Years 1997 - 2006

(Dollars in Thousands)

Fiscal Year	Type	Requested		Awarded		Success Rate	
		No.	Amt.	No.	Amt.		
1997	Competing	New	3,328	\$828,653	815	\$160,763	29.2%
		Renewal	815	354,054	392	146,912	
		Supplement	14	3,136	5	755	
		Subtotal	4,157	1,185,843	1,212	308,430	
	Non-Competing				2,532	814,885	
	Total			3,744	1,123,315		
1998	Competing	New	3,054	\$797,477	847	\$189,746	32.8%
		Renewal	697	283,562	382	137,764	
		Supplement	18	4,299	6	1,421	
		Subtotal	3,769	1,085,338	1,235	328,931	
	Non-Competing				2,723	901,845	
	Total			3,958	1,230,776		
1999	Competing	New	3,905	\$1,091,110	1,088	\$237,187	31.8%
		Renewal	757	340,075	390	145,623	
		Supplement	12	3,882	6	2,353	
		Subtotal	4,674	1,435,067	1,484	385,163	
	Non-Competing				2,867	976,610	
	Total			4,351	1,361,773		
2000	Competing	New	4,116	\$1,253,002	957	\$251,628	27.2%
		Renewal	839	435,207	392	175,908	
		Supplement	11	2,379	2	231	
		Subtotal	4,966	1,690,588	1,351	427,767	
	Non-Competing				3,175	1,100,234	
	Total			4,526	1,528,001		
2001	Competing	New	4,342	\$1,374,538	1,050	\$290,707	27.3%
		Renewal	856	437,455	372	173,722	
		Supplement	29	11,108	6	1,214	
		Subtotal	5,227	1,823,101	1,428	465,643	
	Non-Competing				3,267	1,213,098	
	Total			4,695	1,678,741		
2002	Competing	New	4,539	\$1,407,475	1,142	\$302,217	28.4%
		Renewal	861	404,789	384	186,087	
		Supplement	42	8,512	21	3,499	
		Subtotal	5,442	1,820,776	1,547	491,803	
	Non-Competing				3,429	1,356,138	
	Total			4,976	1,847,941		
2003	Competing	New	5,323	\$1,675,039	1,222	\$347,446	26.5%
		Renewal	955	447,122	441	194,084	
		Supplement	20	4,671	5	1,338	
		Subtotal	6,298	2,126,832	1,668	542,868	
	Non-Competing				3,467	1,457,144	
	Total			5,135	2,000,012		
2004	Competing	New	6,558	\$2,045,451	1,333	\$339,925	23.6%
		Renewal	988	518,201	445	210,790	
		Supplement	24	8,337	7	2,196	
		Subtotal	7,570	2,571,989	1,785	552,911	
	Non-Competing				3,682	1,549,727	
	Total			5,467	2,102,638		
2005	Competing	New	6,357	\$2,239,503	1,086	\$309,507	19.2%
		Renewal	1,050	473,898	335	162,857	
		Supplement	22	6,147	7	1,185	
		Subtotal	7,429	2,719,548	1,428	473,549	
	Non-Competing				3,984	1,656,614	
	Total			5,412	2,130,164		
2006	Competing	New	6,585	\$2,215,548	1,105	\$293,912	19.2%
		Renewal	984	542,799	348	170,110	
		Supplement	13	4,098	2	681	
		Subtotal	7,582	2,762,445	1,455	464,703	
	Non-Competing				3,980	1,633,442	
	Total			5,435	2,098,145		

Includes Small Business Innovation Research and Small Business Technology Transfer Awards.

Success rate is the number of awarded grants divided by the number of awards requested.

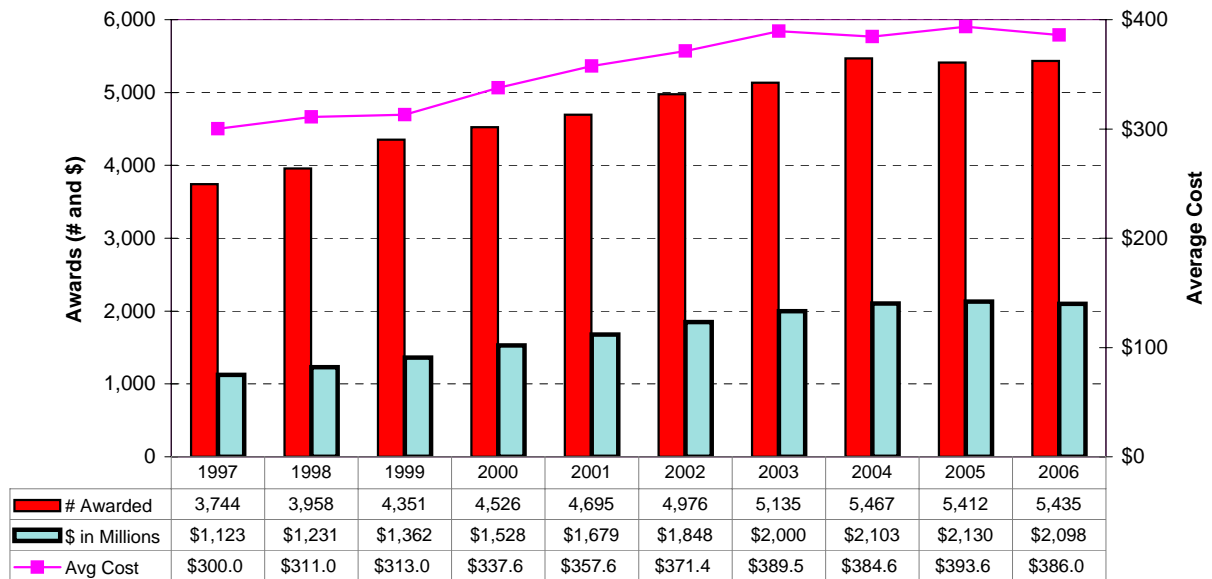
Totals exclude Assessments for Program Evaluation and projects awarded with Stamp Out Breast Cancer Funds.

RPG Awards by Activity Code

Fiscal Years 1997 - 2006

(Dollars in Thousands; Activity Code Descriptions on next page)

		R01	P01	R35	R37	R29	RFA	U01	U19	R03	R21	R33	R15	R55	R56	SBIR/ STTR	TOTAL
1997	#	2,194	149	63	90	446	195	169		101	63			21		253	3,744
	\$	583,116	202,317	62,892	30,950	47,413	48,148	81,193		6,411	12,269			1,450		47,156	1,123,315
1998	#	2,454	160	57	75	485	132	157		97	76		2	14		249	3,958
	\$	672,873	228,854	57,712	27,212	52,136	42,750	79,370		6,069	11,782		127	684		51,207	1,230,776
1999	#	2,796	169	38	71	413	261	31		108	159	6	2	6		291	4,351
	\$	775,961	249,583	38,585	27,377	45,361	112,868	21,319		7,355	22,548	2,079	200	620		57,917	1,361,773
2000	#	3,011	179	21	60	314	269	18		100	223	20		5		306	4,526
	\$	898,764	286,234	19,413	24,688	34,769	132,872	13,617		7,034	32,897	10,074	99	450		67,090	1,528,001
2001	#	3,231	178	1	61	210	260	18		122	231	49	3	3		328	4,695
	\$	1,008,199	301,115	2,186	26,682	23,738	150,224	14,873		9,024	42,326	23,883	358	300		75,833	1,678,741
2002	#	3,376	173		65	112	267	17		186	308	79	10	9		374	4,976
	\$	1,093,908	317,632		29,445	12,471	177,195	17,531		14,115	57,633	39,317	1,477	850		86,367	1,847,941
2003	#	3,573	178		70	14	252	27		203	360	81	21			356	5,135
	\$	1,207,387	336,607		35,360	1,584	173,342	31,126		15,207	67,742	37,714	3,086			90,857	2,000,012
2004	#	3,780	177		73	0	233	26		240	425	96	20			397	5,467
	\$	1,277,185	344,489		37,888	53	168,539	31,377		18,067	77,970	42,931	4,560			99,579	2,102,638
2005	#	3,848	176		74		254	30	1	223	430	88	20	2	1	265	5,412
	\$	1,312,762	338,660		40,007		171,403	34,100	1,049	16,894	76,566	36,250	4,091	200	407	97,775	2,130,164
2006	#	3,909	173		76		273	26	3	218	405	73	14		2	263	5,435
	\$	1,293,880	339,616		40,067		173,304	31,292	4,365	16,558	70,650	28,726	2,983		649	96,055	2,098,145



*EXCLUDES projects awarded with the Stamp Out Breast Cancer Funds and Program Evaluation.

Activity Code Descriptions

R01	Research Project (Traditional) discrete, specified, circumscribed project to be performed by the named investigator(s) in an area representing his/her specified interest and competencies.
P01	Research Program Projects broadly based, multidisciplinary, often long-term, research program which has a specific major objective or a basic theme. A program project is directed toward a range of problems having a central research focus in contrast to the usually narrower thrust of the traditional research project.
R35	Outstanding Investigator Grants long-term support to an experienced investigator with an outstanding record of research productivity. This support is intended to encourage investigators to embark on long-term projects of unusual potential in a categorical program area.
R37	Method to Extend Research in Time (MERIT) Award long-term grant support to investigators whose research competence and productivity are distinctly superior and who are highly likely to continue to perform in an outstanding manner. Investigators may not apply for a MERIT award. Program staff and/or members of the cognizant National Advisory Council/Board will identify candidates for the MERIT award during the course of review of competing research grant applications prepared and submitted in accordance with regular PHS requirements.
R29	First Independent Research Support and Transition (FIRST) Award sufficient initial period of research support for newly independent biomedical investigators to develop their research capabilities and demonstrate the merit of their research ideas.
RFA	Request for Applications A formal statement inviting grant or cooperative agreement applications in a well-defined scientific area to accomplish specific program purposes and indicates the amount of funds set aside for the competition and/or the estimated number of awards to be made.
U01	Research Project Cooperative Agreement discrete, specified, circumscribed project to be performed by the named investigator(s) in an area representing his/her specific interest and competencies.
U19	Research Program Cooperative Agreements support research programs that have multiple projects directed towards specific major objective, basic theme, or program goal, requiring a broad-based, multidisciplinary, and often long-term, approach.
R03	Small Grants research support specifically limited in time and amount for studies in categorical program areas. Small grants provide flexibility for initiating studies, which are generally for preliminary short-term projects and are non-renewable.
R21	Exploratory/Developmental Grants Phase I development of new research activities in categorical program areas. Support generally is restricted in level of support and in time.
R33	Exploratory/Developmental Grants Phase II development of new research activities in categorical program areas. Support generally is restricted in level of support and in time.
R15	Academic Research Enhancement Award (AREA) to domestic health professional schools and other institutions offering baccalaureate or advanced degrees in health sciences, except those that have received NIH research grants and/or cooperative agreements. Supports feasibility studies and other small-scale research projects.
R55	Shannon Awards limited support to scientists whose research applications fall short of the cutoff for funding yet are at the "margin of excellence" whereby the perceived quality of the grant is statistically indistinguishable from grants that are funded.
R56	High-Priority, Short-Term Project Award provide limited interim support to enable an applicant to gather additional data for revision of a new or competing renewal application.
R41	Small Business Technology Transfer (STTR) Grants - Phase I establish the technical merit and feasibility of R&D ideas which may ultimately lead to a commercial product(s) or service(s).
R42	Small Business Technology Transfer (STTR) Grants - Phase II establish the technical merit and feasibility of R&D ideas which may ultimately lead to a commercial product(s) or service(s).
R43	Small Business Innovation Research (SBIR) Grants - Phase I projects limited in time and amount, to establish the technical merit and feasibility of R&D ideas which may ultimately lead to a commercial product(s) or service(s).
R44	Small Business Innovation Research (SBIR) Grants - Phase II in-depth development of R&D ideas whose feasibility has been established in Phase I and which are likely to result in commercial products or services.
U43	Small Business Innovation Research (SBIR) Cooperative Agreement - Phase I utilized when an assistance relationship will exist between the institute and a recipient and in which substantial programmatic involvement is anticipated between the institute and the recipient during performance of the contemplated activity.
U44	Small Business Innovation Research (SBIR) Cooperative Agreement - Phase II in-depth development of R&D ideas whose feasibility has been established in Phase I and which are likely to result in commercial products or services.

Cancer Centers by State (P30 Core Grants), Fiscal Year 2006

(Dollars in Thousands)

State	Grantee Institution	Type	Amount
Alabama	University of Alabama at Birmingham	Comprehensive	\$6,097
Arizona	University of Arizona	Clinical	4,383
California	Burnham Institute	Lab/Basic	3,489
	Beckman Research Institute of City of Hope	Comprehensive	2,404
	Salk Institute for Biological Sciences	Lab/Basic	2,948
	University of California Davis	Clinical	3,221
	University of California Irvine	Comprehensive	2,630
	University of California Los Angeles	Comprehensive	4,729
	University of California San Diego	Comprehensive	4,073
	University of California San Francisco	Comprehensive	7,197
	University of Southern California	Comprehensive	6,775
Colorado	University of Colorado Health Sciences Center	Comprehensive	4,427
Connecticut	Yale University	Comprehensive	82
District of Columbia	Georgetown University	Comprehensive	3,141
Florida	H. Lee Moffitt Cancer Center and Research Institute	Comprehensive	2,249
Hawaii	University of Hawaii at Manoa	Clinical	1,469
Illinois	Northwestern University	Comprehensive	4,673
	University of Chicago	Clinical	3,949
Indiana	Indiana University - Purdue University at Indianapolis	Clinical	1,407
	Purdue University West Lafayette	Lab/Basic	1,296
Iowa	University of Iowa	Comprehensive	2,575
Maine	Jackson Laboratory	Lab/Basic	875
Maryland	Johns Hopkins University	Comprehensive	7,943
Massachusetts	Dana-Farber Cancer Institute	Comprehensive	12,120
	Massachusetts Institute of Technology	Lab/Basic	2,900
Michigan	University of Michigan at Ann Arbor	Comprehensive	6,162
	Wayne State University	Comprehensive	2,912
Minnesota	Mayo Clinic Rochester	Comprehensive	5,152
	University of Minnesota Twin Cities	Comprehensive	3,644
Missouri	Washington University	Comprehensive	4,368
Nebraska	University of Nebraska Medical Center	Clinical	1,591
New Hampshire	Dartmouth College	Comprehensive	3,012
New Jersey	Robert Wood Johnson Medical School	Comprehensive	3,305
New Mexico	University of New Mexico Albuquerque	Clinical	1,359
New York	Cold Spring Harbor Laboratory	Lab/Basic	4,208
	Columbia University Health Sciences	Comprehensive	1,842
	New York University School of Medicine	Clinical	2,640
	Roswell Park Cancer Institute Corp	Comprehensive	3,891
	Sloan-Kettering Institute for Cancer Research	Comprehensive	10,694
	Yeshiva University	Clinical	3,888
North Carolina	Duke University	Comprehensive	6,794
	University of North Carolina Chapel Hill	Comprehensive	6,585
	Wake Forest University Health Sciences	Comprehensive	1,322
Ohio	Case Western Reserve University	Comprehensive	2,830
	Ohio State University	Comprehensive	3,825
Oregon	Oregon Health & Science University	Clinical	1,168
Pennsylvania	Fox Chase Cancer Center	Comprehensive	8,195
	Thomas Jefferson University	Clinical	4,440
	University of Pennsylvania	Comprehensive	7,648
	University of Pittsburgh at Pittsburgh	Comprehensive	5,433
	Wistar Institute	Lab/Basic	2,727
Tennessee	St. Jude Children's Research Hospital	Clinical	5,112
	Vanderbilt University	Comprehensive	5,207
Texas	University of Texas San Antonio Health Science Center	Clinical	3,069
	University of Texas M.D. Anderson Cancer Center	Comprehensive	9,737
Utah	Huntsman Cancer Institute/University of Utah	Clinical	714
Vermont	University of Vermont & St. Agric College	Comprehensive	1,348
Virginia	University of Virginia Charlottesville	Clinical	2,483
	Virginia Commonwealth University/Massey Cancer Center	Clinical	1,904
Washington	Fred Hutchinson Cancer Research Center	Comprehensive	10,280
Wisconsin	University of Wisconsin Madison	Comprehensive	5,657
	Total P30s	61	252,194
	Total Planning Grants (P20s)		7,725
	Center for AIDs Research (CFARs)		3,955
	Other P30s & U41s		1,127
Total Cancer Centers			\$265,002

Specialized Programs of Research Excellence, Fiscal Year 2006

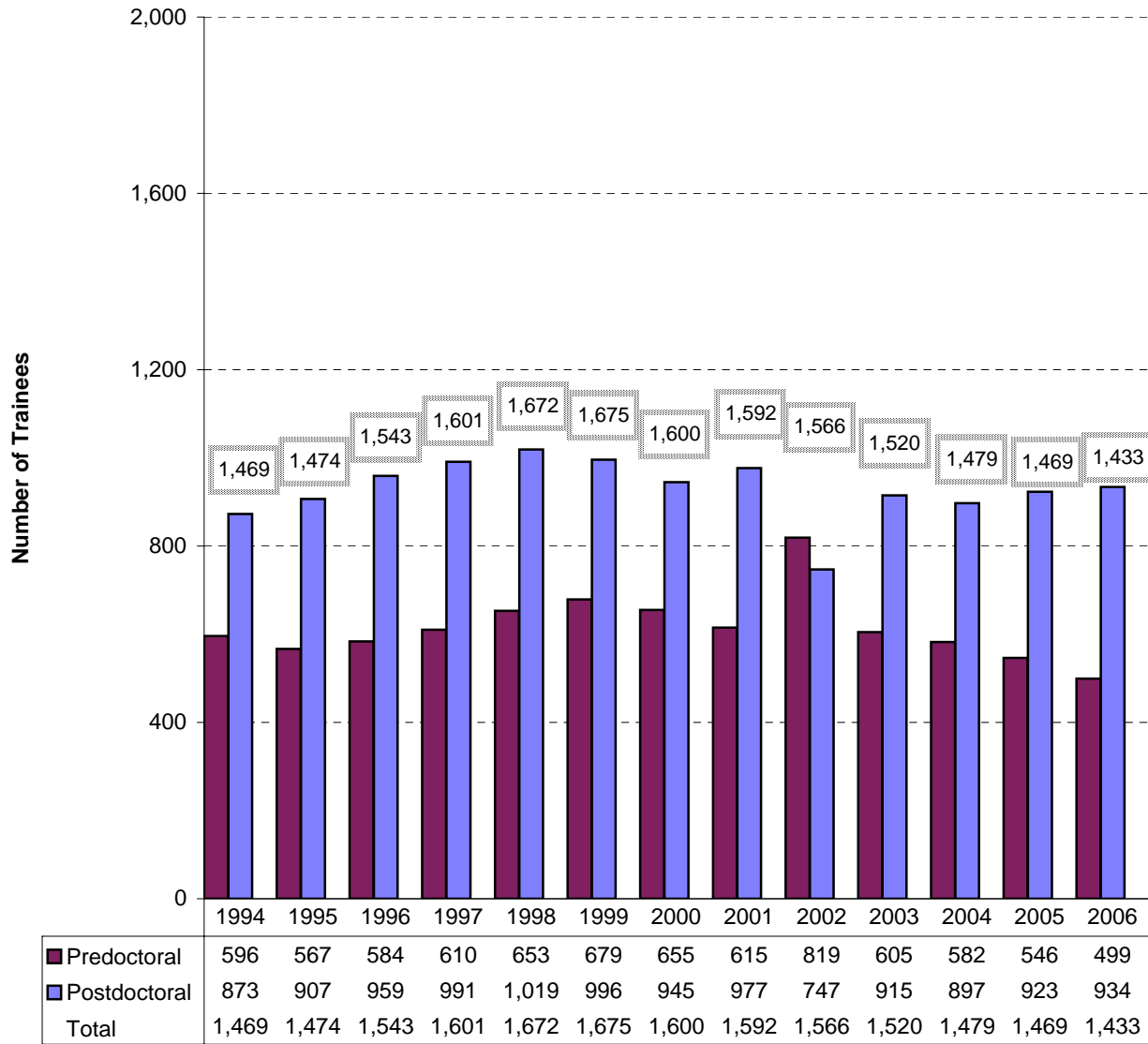
(Dollars in Thousands)

In 1992, the NCI established the Specialized Programs of Research Excellence (SPORE). This program promotes interdisciplinary research and speeds the bidirectional exchange between basic and clinical science to move basic research findings from the laboratory to applied settings involving patients and populations. The goal of the SPORE program is to bring to clinical care settings novel ideas that have the potential to reduce cancer incidence and mortality, and to improve survival, and the quality of life.

Laboratory and clinical scientists work collaboratively to plan, design and implement research programs that impact on cancer prevention, detection, diagnosis, treatment and control. To facilitate this research, each SPORE develops and maintains specialized resources that benefit all scientists working on the specific cancer site, as well as SPORE scientists. An additional SPORE element is a career development program that recruits scientists both within and outside the SPORE institution to enlarge the cadre of laboratory and clinical scientists dedicated to translational research on human cancer. SPOREs meet annually to share data, assess research progress, identify new research opportunities and establish research priorities.

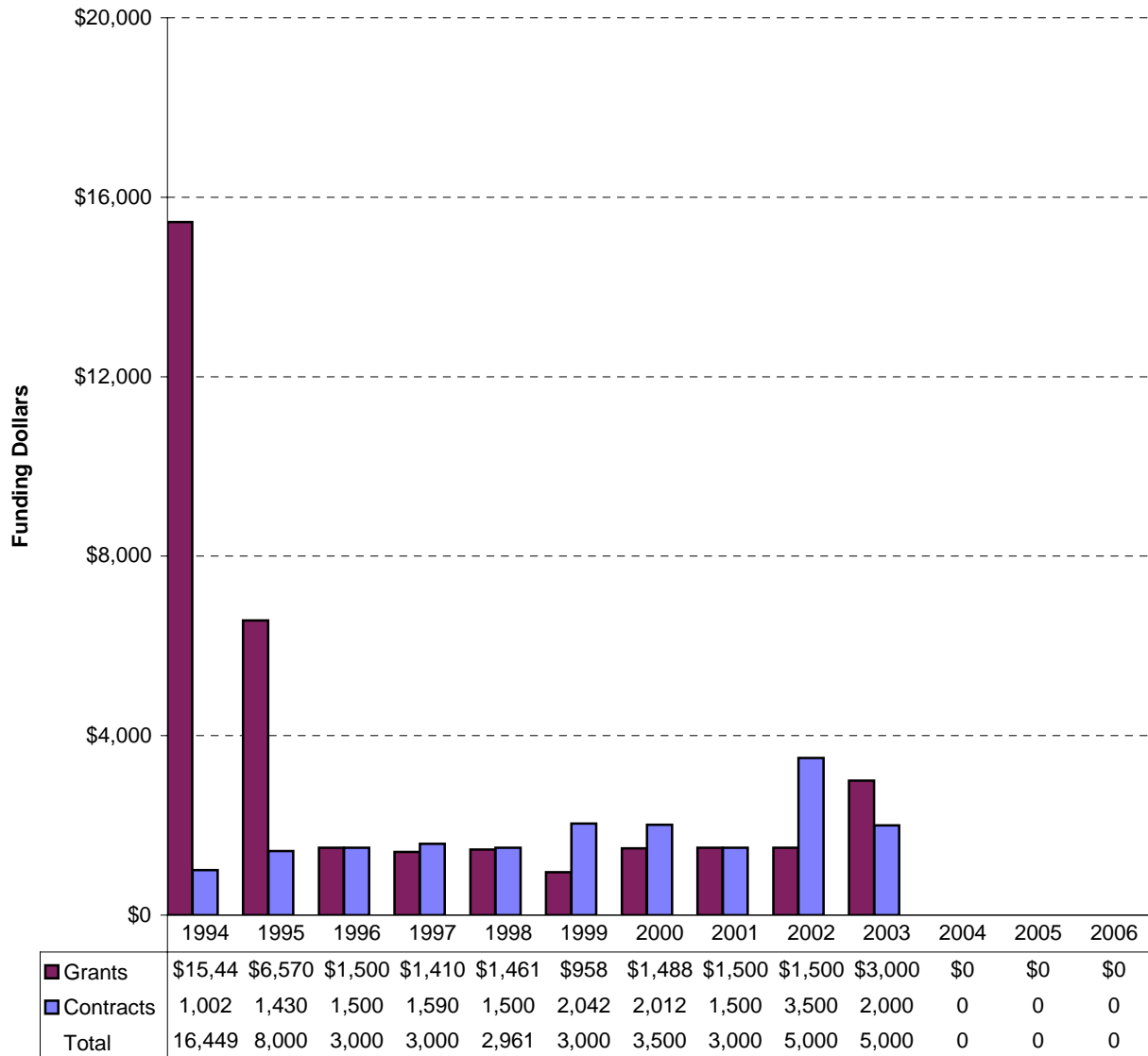
Mechanism	Site	No.	Amount
P50 SPOREs	Brain	4	\$6,842
	Breast	10	24,100
	Cervical	1	2,390
	Genitourinary	2	4,955
	Gastrointestinal	4	10,707
	Head and Neck	4	7,449
	Leukemia	1	2,434
	Lung	6	11,940
	Lymphoma	3	7,016
	Myeloma	1	2,200
	Ovarian	4	9,422
	Pancreatic	1	2,245
	Prostate	9	20,646
	Skin	4	7,276
	Uterine	1	1,903
	Total P50s	55	121,525
P20 SPOREs	Lung	1	1,032
	Pancreatic	2	2,000
	Total P20s	3	3,032
	Subtotal	58	124,557
Co-funded	Urology with NIDDK		376
Total		58	\$124,933

NRSA Predoctoral and Postdoctoral Trainees
Fiscal Years 1994 - 2006
(Full Time Trainee Positions)



Construction/Renovation Funding Fiscal Years 1994 - 2006

(Dollars in Thousands)



*Excludes Buildings and Facilities used for repairs and improvements at the NCI - Frederick facility totalling \$7,936 in FY 2005 and \$7,920 in FY 2006.

Grant and Contract Awards by State Fiscal Year 2006

(Dollars in Thousands)

State	Grants		Contracts		Total NCI		State
	No	Amount	No	Amount	No	Amount	
Alabama	76	\$33,357	7	\$6,704	83	\$40,061	Alabama
Alaska	1	316	0	0	1	316	Alaska
Arizona	84	44,535	3	2,020	87	46,555	Arizona
Arkansas	18	7,532	0	0	18	7,532	Arkansas
California	930	475,396	21	173,291	951	648,687	California
Colorado	95	37,009	2	2,798	97	39,807	Colorado
Connecticut	83	29,418	2	3,235	85	32,653	Connecticut
Delaware	4	1,756	0	0	4	1,756	Delaware
District of Columbia	79	30,571	26	9,309	105	39,880	District of Columbia
Florida	170	50,391	7	5,901	177	56,292	Florida
Georgia	76	28,716	9	6,235	85	34,952	Georgia
Hawaii	24	14,859	3	4,842	27	19,702	Hawaii
Idaho	0	0	0	0	0	0	Idaho
Illinois	241	106,636	13	8,530	254	115,166	Illinois
Indiana	67	21,855	1	412	68	22,267	Indiana
Iowa	35	13,637	3	4,759	38	18,396	Iowa
Kansas	21	7,020	3	3,516	24	10,536	Kansas
Kentucky	51	13,679	2	2,073	53	15,752	Kentucky
Louisiana	37	12,171	2	1,925	39	14,096	Louisiana
Maine	9	3,188	0	0	9	3,188	Maine
Maryland	255	122,550	71	95,339	326	217,889	Maryland
Massachusetts	674	335,060	11	4,385	685	339,445	Massachusetts
Michigan	204	98,221	8	10,234	212	108,455	Michigan
Minnesota	173	88,346	5	5,960	178	94,306	Minnesota
Mississippi	5	1,553	0	0	5	1,553	Mississippi
Missouri	125	55,381	7	6,214	132	61,595	Missouri
Montana	4	1,589	0	0	4	1,589	Montana
Nebraska	36	13,452	0	0	36	13,452	Nebraska
Nevada	8	2,575	0	0	8	2,575	Nevada
New Hampshire	61	26,907	1	257	62	27,164	New Hampshire
New Jersey	97	31,547	5	4,057	102	35,604	New Jersey
New Mexico	28	11,073	1	2,502	29	13,575	New Mexico
New York	678	295,447	11	9,749	689	305,196	New York
North Carolina	296	127,037	11	4,158	307	131,195	North Carolina
North Dakota	5	1,322	0	0	5	1,322	North Dakota
Ohio	278	103,479	10	5,730	288	109,209	Ohio
Oklahoma	13	3,647	2	1,480	15	5,127	Oklahoma
Oregon	61	19,991	0	0	61	19,991	Oregon
Pennsylvania	549	275,623	6	3,963	555	279,586	Pennsylvania
Rhode Island	43	14,178	0	0	43	14,178	Rhode Island
South Carolina	49	15,428	0	0	49	15,428	South Carolina
South Dakota	5	2,894	0	0	5	2,894	South Dakota
Tennessee	192	92,705	2	3,272	194	95,977	Tennessee
Texas	519	225,590	16	7,369	535	232,959	Texas
Utah	48	18,382	2	2,640	50	21,022	Utah
Vermont	11	6,400	0	0	11	6,400	Vermont
Virginia	93	33,208	9	12,628	102	45,836	Virginia
Washington	260	140,639	6	7,085	266	147,724	Washington
West Virginia	6	1,085	1	806	7	1,891	West Virginia
Wisconsin	109	42,129	4	2,853	113	44,982	Wisconsin
Subtotal	6,986	3,139,478	293	426,234	7,279	3,565,712	Subtotal
American Samoa	1	342	0	0	1	342	American Samoa
Guam	1	456	0	0	1	456	Guam
Puerto Rico	4	3,097	0	0	4	3,097	Puerto Rico
Total	6,992	3,143,373	293	426,234	7,285	3,569,607	Total

Excludes NRSA TAP, Loan Repayment Program, Foreign Contracts and Grants, Program Evaluation, and other assessments and miscellaneous expenses.

Grant and Contract Awards by Country Fiscal Year 2006

(Dollars in Thousands)

Country	Grant		Contract		Total NCI		Country
	No	Amount	No	Amount	No	Amount	
Australia	11	\$4,538			11	\$4,538	Australia
Belgium	1	417			1	417	Belgium
Canada	25	11,060	2	1,281	27	12,340	Canada
China		27	2	259	2	286	China
Costa Rica			1	1,643	1	1,643	Costa Rica
Finland			1	19	1	19	Finland
France	4	893			4	893	France
Germany	1	50			1	50	Germany
India	1	223			1	223	India
Israel	12	2,080			12	2,080	Israel
Italy	2	428			2	428	Italy
Netherlands	1	180			1	180	Netherlands
Russia			2	197	2	197	Russia
Singapore	1	88			1	88	Singapore
South Africa	2	163			2	163	South Africa
Spain	1	190			1	190	Spain
Sweden	3	1,240			3	1,240	Sweden
Switzerland	4	630			4	630	Switzerland
United Kingdom	9	2,258			9	2,258	United Kingdom
West Indies			1	300	1	300	West Indies
Total Foreign	78	24,466	9	3,699	87	28,166	

Institutions Receiving More than \$15 Million in NCI Support, FY 2006

(Dollars in Thousands)

State	Institution	Grants	Contracts	Total NCI
Alabama	University of Alabama at Birmingham	\$30,307	\$3,148	\$33,455
Arizona	University of Arizona	31,912	1,783	33,696
California	Beckman Research Inst of City of Hope	19,419		19,419
	Burnham Institute	21,588		21,588
	National Childhood Cancer Foundation	37,844		37,844
	Science Applications International Corporation		150,056	150,056
	Scripps Research Institute	19,593		19,593
	Stanford University	49,033		49,033
	University of California System	173,884	3,586	177,470
	University of Southern California	38,469	4,157	42,626
Colorado	University of Colorado Health Sciences Center	24,251	2,192	26,443
Connecticut	Yale University	24,297	962	25,258
District of Columbia	Georgetown University	21,921	4,786	26,707
Florida	H. Lee Moffitt Cancer Ctr. & Research Institute	21,828	279	22,107
Georgia	Emory University	19,009	1,593	20,602
Hawaii	University of Hawaii at Manoa	13,734	4,842	18,576
Illinois	Northwestern University	25,718	1,602	27,320
	University of Chicago	41,698	1,596	43,294
	University of Illinois at Chicago	19,314	1,100	20,414
Iowa	Iowa University	12,163	4,759	16,923
Maryland	Johns Hopkins University	86,768	255	87,023
	Westat Inc.		28,547	28,547
Massachusetts	Beth Israel Deaconess Medical Center	19,282		19,282
	Brigham & Women's Hospital	40,961		40,961
	Dana-Farber Cancer Institute	77,314		77,314
	Harvard University	30,527		30,527
	Massachusetts General Hospital	43,014		43,014
	Massachusetts Institute of Technology	31,525		31,525
Michigan	University of Michigan at Ann Arbor	66,354	1,235	67,589
	Wayne State University	15,824	5,684	21,508
Minnesota	Mayo Clinic Rochester	53,230	3,411	56,641
	University of Minnesota Twin Cities	31,389	2,549	33,938
Missouri	Washington University	41,196	4,216	45,412
New Hampshire	Dartmouth College	26,482	257	26,739
New York	Columbia University Health Sciences	29,946		29,946
	Mount Sinai School of Medicine	17,881		17,881
	New York University School of Medicine	19,299		19,299
	Roswell Park Cancer Institute Corp	36,635	313	36,948
	Sloan-Kettering Institute for Cancer Research	77,630	1,115	78,745
	Yeshiva University	24,623		24,623
North Carolina	Duke University	60,992	643	61,635
	University of North Carolina Chapel Hill	46,024		46,024
Ohio	Case Western Reserve University	23,364		23,364
	Cleveland Clinic Lerner College	16,170		16,170
	Ohio State University	39,582	2,123	41,705
Pennsylvania	American College of Radiology	30,034		30,034
	Fox Chase Cancer Center	31,076	2,244	33,320
	NSABP Foundation, Inc.	16,641		16,641
	Thomas Jefferson University	16,004		16,004
	University of Pennsylvania	69,960	169	70,128
	University of Pittsburgh at Pittsburgh	55,031	1,551	56,582
Tennessee	St. Jude Children's Research Hospital	25,217	2,672	27,889
	Vanderbilt University	57,821		57,821
Texas	Baylor College of Medicine	37,532		37,532
	CTRC Research Foundation	16,108		16,108
	University of Texas MD Anderson Cancer Center	112,143	6,408	118,550
Utah	University of Utah	17,739	2,640	20,379
Virginia	University of Virginia Charlottesville	17,017		17,017
Washington	Fred Hutchinson Cancer Research Center	89,740	6,124	95,864
	University of Washington	33,248	147	33,395
Wisconsin	University of Wisconsin Madison	34,215	1,674	35,889
	Total	\$2,261,517	\$260,418	\$2,521,936

Includes Manpower Development Grants

Appropriations of the NCI 1938-2006

(In Whole Dollars)

1938 - 1969	\$1,875,699,720	
1970 - 1979	6,073,870,500	
1980 - 1989	11,958,860,000	
1990.....	1,664,000,000	prior to reductions in PL 101-166 (-\$6,839,000) and PL101-239 (-\$22,829,000).
1991.....	1,766,324,000	prior to reductions in PL 101-517 (-\$8,972,000 for salary and expense reduction; -\$42,568,000 for across-the-board reduction).
1992.....	1,989,278,000	prior to reductions in PL 102-170 (-\$21,475,000 for salary and expense reduction; -\$1,262,000 for travel reduction; \$15,000,000 transferred to other institutes for cancer research).
1993.....	2,007,483,000	prior to reductions in PL 102-294 (-\$16,060,000 for .8% reduction to all line items, -\$9,933,000 for S&E reduction, -\$139,000 for consultant services reduction).
1994.....	2,082,267,000	prior to reduction in PL103-211 (-\$5,885,000 administration reduction).
1995.....	2,135,119,000	prior to reductions in PL 103-211 (-\$1,883,000 for Procurement reduction; -\$116,000 for SLUC reduction; -\$1,052,000 for Bonus Pay reduction). Includes \$218,199,000 of AIDS funding.
1996.....	2,251,084,000	Includes \$225,790,000 of AIDS funding.
1997.....	2,382,532,000	Includes \$224,983,000 of AIDS funding.
1998.....	2,547,314,000	prior to reductions in PL 105-119 (-\$4,755,000 via the Secretary's 1% transfer authority). Includes \$8,699,000 transferred via the NIH Director's 1% transfer authority, \$41,000 transfer from U.S. Dept. of State in PL 105-119, and \$226,414,000 of AIDS funding.
1999.....	2,927,187,000	prior to reductions in PL 106-51 (-\$1,940,000 for travel and admin. expenses). Includes -\$931,000 transferred via the Secretary 1% transfer authority, and -\$6,259,000 transferred via the NIH Director's 1% transfer authority, and \$239,190,000 of AIDS funding.
1990 - 1999	21,752,588,000	
2000.....	3,332,317,000	prior to reductions in PL 106-113 (-\$17,763,000 for across the board reduction). Includes \$245,804,000 of AIDS funding.
2001.....	3,757,242,000	prior to reductions in PL 106-554(-\$2,005,000 for across-the-board reduction). Includes -\$711,000 Secretary's 1% transfer, -\$781,000 transfer for Office of Human Research Protection and -\$24,000 lapse. Includes \$255,960,000 of AIDS funding.
2002.....	4,190,405,000	prior to reductions in PL 107-116(-\$4,524,000 via the Secretary's 1% transfer authority, -\$2,054,000 for the enacted rescission, -\$7,118,000 administrative reduction and -\$8,000 lapse). Includes \$254,396,000 of AIDS funding.
2003.....	4,622,394,000	prior to reductions in PL 108-7(-\$30,046,000 for the enacted rescission and -\$2,000 lapse). Includes \$263,442,000 of AIDS funding.
2004.....	4,770,519,000	prior to reductions in PL 108-199(-\$3,136,000 for Labor/HHS/ED rescission; \$28,128,000 for across the board reduction; -\$15,357,000 NIH 1% transfer assessment, and \$5,000 lapse). Includes \$266,975,000 of AIDS funding.
2005.....	4,865,525,000	prior to reductions in PL 108-447(\$38,914,000 .8% across the board reduction; -\$1,353,000 for Labor/HHS/ED rescission; -\$30,505,000 NIH 1% transfer assessment, and \$9,000 lapse). Includes \$265,907,000 of AIDS funding.
2006.....	4,841,774,000	prior to reductions in PL 109-149 (-\$48,418,000 for Labor/HHS/ED rescission; -\$3,293,000 HHS transfer for CMS activities; -\$42,834,000 NIH 1% transfer for roadmap activities, and \$4,000 lapse). Includes \$253,866,000 of AIDS funding.
1938-2006	72,041,194,220	

Bypass Budget Requests

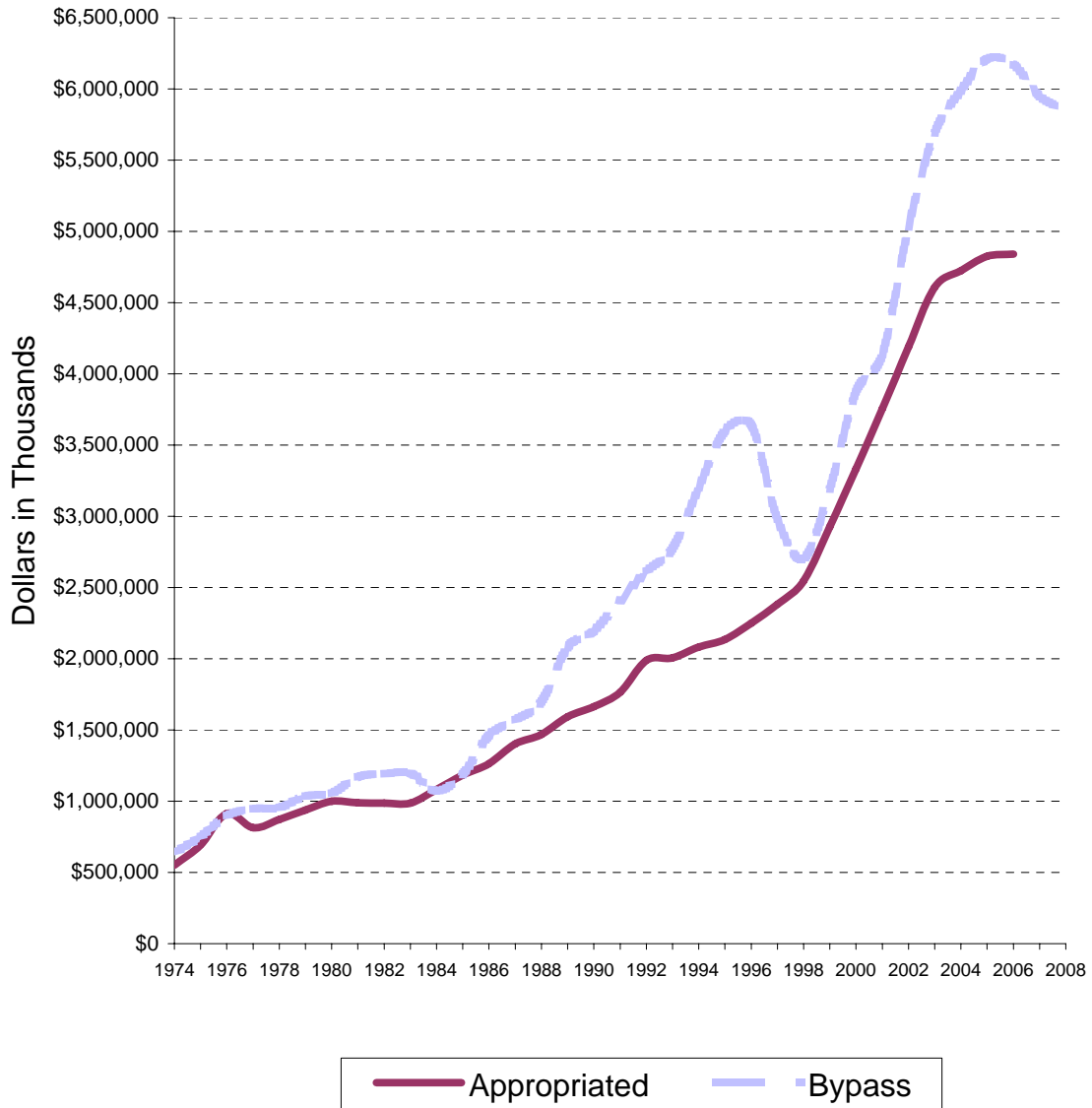
Fiscal Years 1973 - 2008

(In Whole Dollars)

Fiscal Year	Request
1973.....	\$550,790,000
1974.....	640,031,000
1975.....	750,000,000
1976.....	898,500,000
1977.....	948,000,000
1978.....	955,000,000
1979.....	1,036,000,000
1980.....	1,055,000,000
1981.....	1,170,000,000
1982.....	1,192,000,000
1983.....	1,197,000,000
1984.....	1,074,000,000
1985.....	1,189,000,000
1986.....	1,460,000,000
1987.....	1,570,000,000
1988.....	1,700,000,000
1989.....	2,080,000,000
1990.....	2,195,000,000
1991.....	2,410,000,000
1992.....	2,612,000,000
1993.....	2,775,000,000
1994.....	3,200,000,000
1995.....	3,600,000,000
1996.....	3,640,000,000
1997.....	2,977,000,000
1998.....	2,702,500,000
1999.....	3,191,000,000
2000.....	3,873,000,000
2001.....	4,135,000,000
2002.....	5,030,000,000
2003.....	5,690,000,000
2004.....	5,986,000,000
2005.....	6,211,000,000
2006.....	6,170,000,000
2007.....	5,949,714,000
2008.....	5,865,788,000

The National Cancer Act in December 1971, included a provision for the Director, NCI to submit an annual budget request directly to the President, with comment only by NIH and DHHS. This Bypass Budget was first submitted for 1973.

Bypass Requests and Appropriations of the NCI Fiscal Years 1974 - 2008



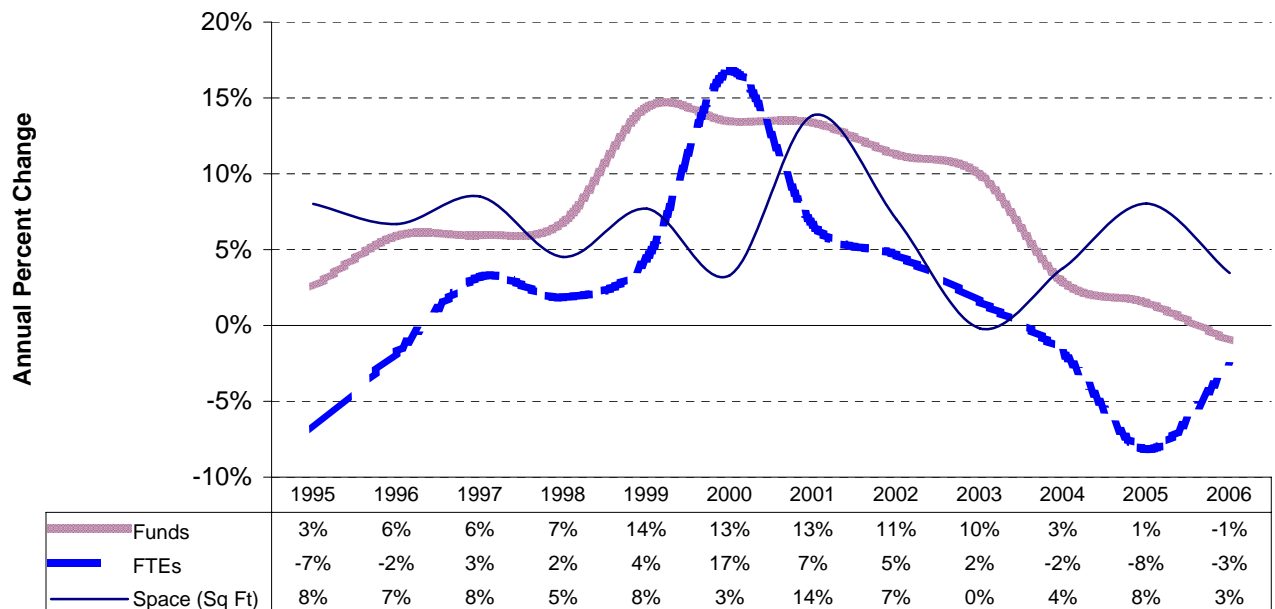
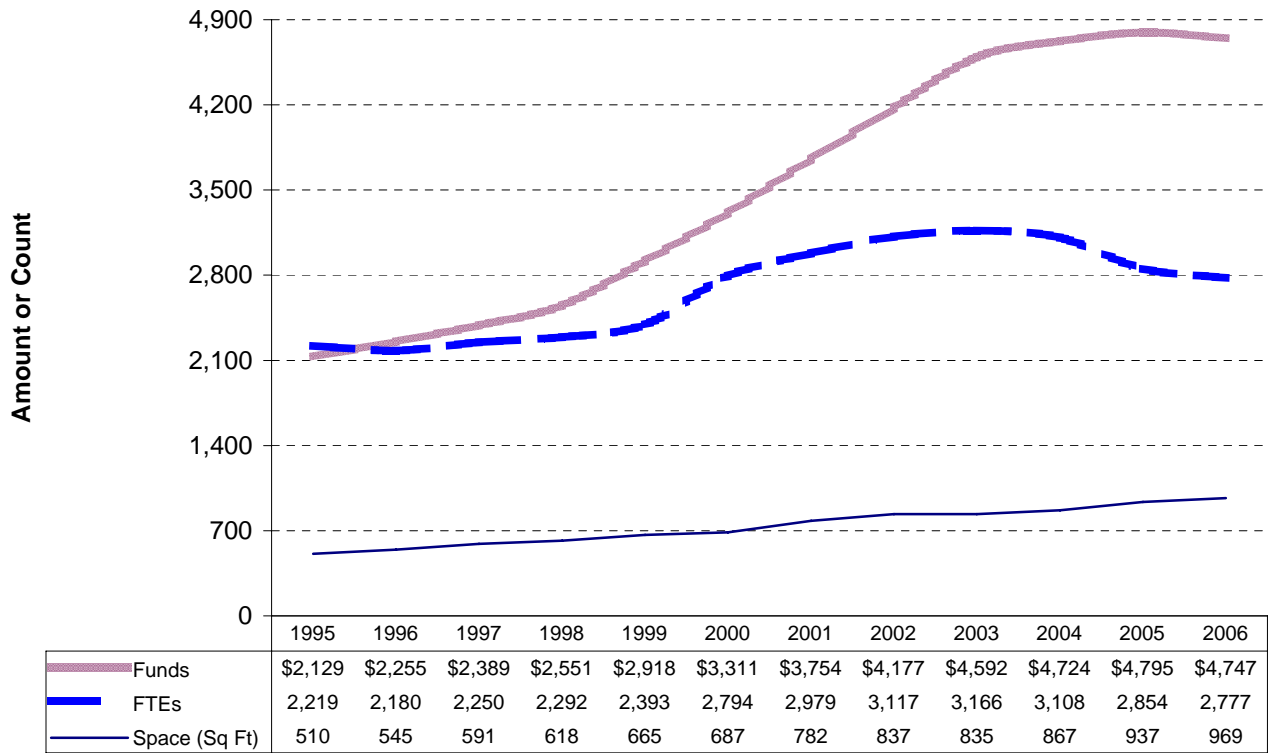
Comparison of Dollars, Positions and Space Fiscal Years 1995 - 2006

Funds are obligations against the annual appropriation in millions of dollars

FTEs are the number of workyears for appointed employees of the NCI. A workyear equals 2,080 hours.

The increase in FTEs in FY 2000 is due to the fact that 195 contract staff were converted to NCI appointments.

Space is in thousands of square feet, excluding NCI-Frederick.



Personnel Resources
Fiscal Years 1997 - 2006

Fiscal Year	Full Time Appointment	Part Time Appointment	Training Fellows	Total Personnel Resources
1997	1,915	422	1,023	3,360
1998	1,921	466	1,124	3,511
1999	1,941	628	1,060	3,629
2000	2,139	831	1,202	4,172
2001	2,224	912	963	4,099
2002	2,250	979	949	4,178
2003	2,193	1,073	1,191	4,457
2004	2,083	990	1,232	4,305
2005	1,959	882	1,077	3,918
2006	2,579	289	1,113	3,981

AIDS Funding History

Fiscal Years 1993 - 2006

Fiscal Year	NCI	NIH	% NCI of NIH
1993	\$173,029	\$1,073,957	16%
1994	212,868	1,298,996	16%
1995	217,430	1,333,600	16%
1996	225,360	1,411,860	16%
1997	224,733	1,501,073	15%
1998	225,991	1,559,071	14%
1999	239,190	1,797,422	13%
2000	244,145	2,005,100	12%
2001	237,789	2,244,160	11%
2002	254,396	2,500,866	10%
2003	263,442	2,718,171	10%
2004	266,975	2,840,384	9%
2005	265,907	2,909,381	9%
2006	253,666	2,902,183	9%

