
The information set forth in this publication is compiled and amended annually by the budget and finance staff of the National Cancer Institute and is intended primarily for use by members of the Institute, principal advisory groups to the Institute and others involved in the administration and management of the National Cancer Program. Questions regarding any of the information contained herein may be directed to the Office of Budget and Finance, National Cancer Institute, 9000 Rockville Pike, Bethesda, Maryland, 20892.

TABLE OF CONTENTS

Executive Summary	Fiscal Year 2008 Annual Report.....	iii
Organization	Director's Biography.....	O-1
	Former Directors of the NCI.....	O-2
	National Cancer Advisory Board.....	O-3A
	National Cancer Advisory Board, Continued.....	O-3B
	Boards of Scientific Counselors and Advisors	O-7
	President's Cancer Panel	O-8
	Executive Committee Members	O-8
	NCI Director's Consumer Liaison Group.....	O-9
	Operational Organization Charts:	
	National Cancer Institute	O-10
	Office of the Director	O-11
	OD I: Office of Management	O-12
	OD II: Center for Biomedical Informatics and Information Technology	O-13
	OD II: Office of Science Planning and Assessment.....	O-13
	OD III: Office of Communications and Education	O-14
	OD III: Office of Centers, Training and Resources	O-14
	OD IV: Center to Reduce Cancer Health Disparities	O-15
	OD IV: Center for Strategic and Scientific Initiatives.....	O-15
	Center for Cancer Research.....	O-16
	Division of Cancer Biology	O-18
	Division of Cancer Epidemiology and Genetics	O-19
	Division of Cancer Prevention.....	O-20
	Division of Cancer Control and Population Sciences.....	O-21
	Division of Cancer Treatment and Diagnosis.....	O-22
	Division of Extramural Activities.....	O-23
Cancer Statistics	Links to Cancer Statistics.....	C-1
Budget Data	NCI Budget	B-1
	Program Structure	B-2
	Extramural Funds	B-3
	NCI Obligations by Mechanism.....	B-4
	Division Obligations by Mechanism	B-5
	NIH Management Fund, Service & Supply Fund and GSA Rent...B-6	B-6
	Special Sources of Funds	B-7
	Funding for Various Research Areas.....	B-8
Extramural Programs	Research Project Grants:	
	Number of Awards	E-1
	Requested, Awarded	E-2
	Awards by Activity Code	E-3
	Activity Code Descriptions	E-4
	Cancer Centers	
	By State	E-5
	Specialized Programs of Research Excellence (SPORE)	E-6
	National Research Service Awards – Pre and Post Doctoral	

Trainees	E-7
Construction/Renovation Funding.....	E-8
Grant and Contract Awards by State	E-9
Grant and Contract Awards by Country	E-10
Institutions Receiving More than \$15,000,000 in NCI Support	E-11

Historical Trends

Appropriations of the NCI	H-1
Bypass Budget Requests	H-2
Comparison of Bypass Requests and Appropriations of the NCI .	H-3
Comparison of Dollars, Positions and Space.....	H-4
Personnel Resources	H-5
AIDS Funding History	H-6

This publication may be viewed on the World Wide Web by pointing a browser to the Office of Budget and Finance homepage at <http://obf.cancer.gov/> on the National Cancer Institute's website: www.nci.nih.gov or www.cancer.gov.

Fiscal Year 2008 Annual Report

BUDGET IN REVIEW

This report provides a summary of the distribution of the Fiscal Year 2008 budget among the various National Cancer Institute (NCI) research programs and funding mechanisms, funding policies influencing grant awards, and comparisons with prior year allocations. Additional information on the NCI budget is accessible from the NCI Home Page (<http://www.cancer.gov>).

Summary

Funds available to the NCI in FY 2008 totaled over \$4.828 billion, reflecting an increase of 1% and \$35 million from the previous fiscal year.

Fiscal highlights from FY 2008 include:

- Of the total NCI budget, 43% of the funds were allocated for Research Project Grants.
- The total number of Research Project Grants (RPGs) funded was 5,380. (includes SBIR)
- Almost one-fourth of the RPGs awarded were new (Type 1) or competing renewal (Type 2) awards.
- 1,266 competing RPGs were funded.
- Approximately one-third of the total NCI budget supported ongoing non-competing (Type 5) RPGs.
- R01 grants were funded to the 14th percentile.
- 312 grants – totaling more than \$97 million – were funded as Small Business Innovation Research (SBIR) and Small Business Technology Transfer (STTR) awards.
- Intramural Research comprised approximately 15% of the total NCI budget in FY 2007.
- \$472 million –10% of the total NCI budget – was allocated for Cancer Prevention & Control.

Distribution of the Budget by Funding Mechanism for FY 2007 and FY 2008

Summary Points

- The total budget for the Research Project Grant category decreased \$22 million, due to the decrease in non-competing Research Project Grants and administrative supplements.
- Funds for competing grants increased by \$21 million.
- Funds for training and career development of current and future research scientists through Research Career Awards decreased remained stable.
- The total budget for Cancer Centers, Specialized Centers (U54) and SPOREs increased by 1%.
- Clinical Cooperative Groups funds decreased 3% and Cancer Education funds decreased by 4%.
- Funds for Cancer Prevention and Control fell by \$27 million.
- During FY 2008, NIH and DHHS Assessments increased by a total of \$19.2 million, including an increase of \$2 million for General Account, \$8.2 million increase for the Service and Supply Fund, \$7 million increase for Program Evaluation, and a \$2 million increase for the Management Fund.

NCI Dollars by Mechanism for FY 2007 and 2008
(in thousands)

	2007	2008	Change '07-08 Am't	%
Research Project Grants:				
Noncompeting	\$1,546,958	\$1,517,375	-29,583	-1.9%
Admin Supplements	36,466	19,697	-16,769	-46.0%
Competing	434,713	455,348	20,635	4.7%
Subtotal, RPG	2,018,137	1,992,420	-25,717	-1.3%
SBIR/STTR	93,677	97,439	3,762	4.0%
Total, RPG	2,111,814	2,089,859	-21,955	-1.0%
Cancer Centers	273,184	274,470	1,286	0.5%
Specialized Cancer Centers (U54)	74,677	79,271	4,594	6.2%
SPOREs	123,808	123,293	-515	-0.4%
Total: Centers, Spec Ctrs, & SPOREs	471,669	477,034	5,365	1.1%
Research Career Program	79,595	79,528	-67	-0.1%
Cancer Education	31,337	30,089	-1,248	-4.0%
Clinical Cooperative Groups	148,193	143,975	-4,218	-2.8%
Other Grants	63,756	64,183	427	0.7%
Subtotal, Other	322,881	317,775	-5,106	-1.6%
Total, Research Grants	2,906,364	2,884,668	-21,696	-0.7%
National Research Service Awards	68,223	69,901	1,678	2.5%
R&D Contracts	416,850	444,189	27,339	6.6%
Intramural Research	706,179	718,372	12,193	1.7%
Research Management & Support	188,683	230,991	42,308	22.4%
Cancer Prevention & Control	498,396	471,515	-26,881	-5.4%
Construction	0	0	0	0.0%
Buildings and Facilities	7,920	7,920	0	0.0%
Total, NCI	4,792,615 *	4,827,556 *	34,941	0.7%
AIDS research included above	[253,666]	[258,499]	4,833	1.9%

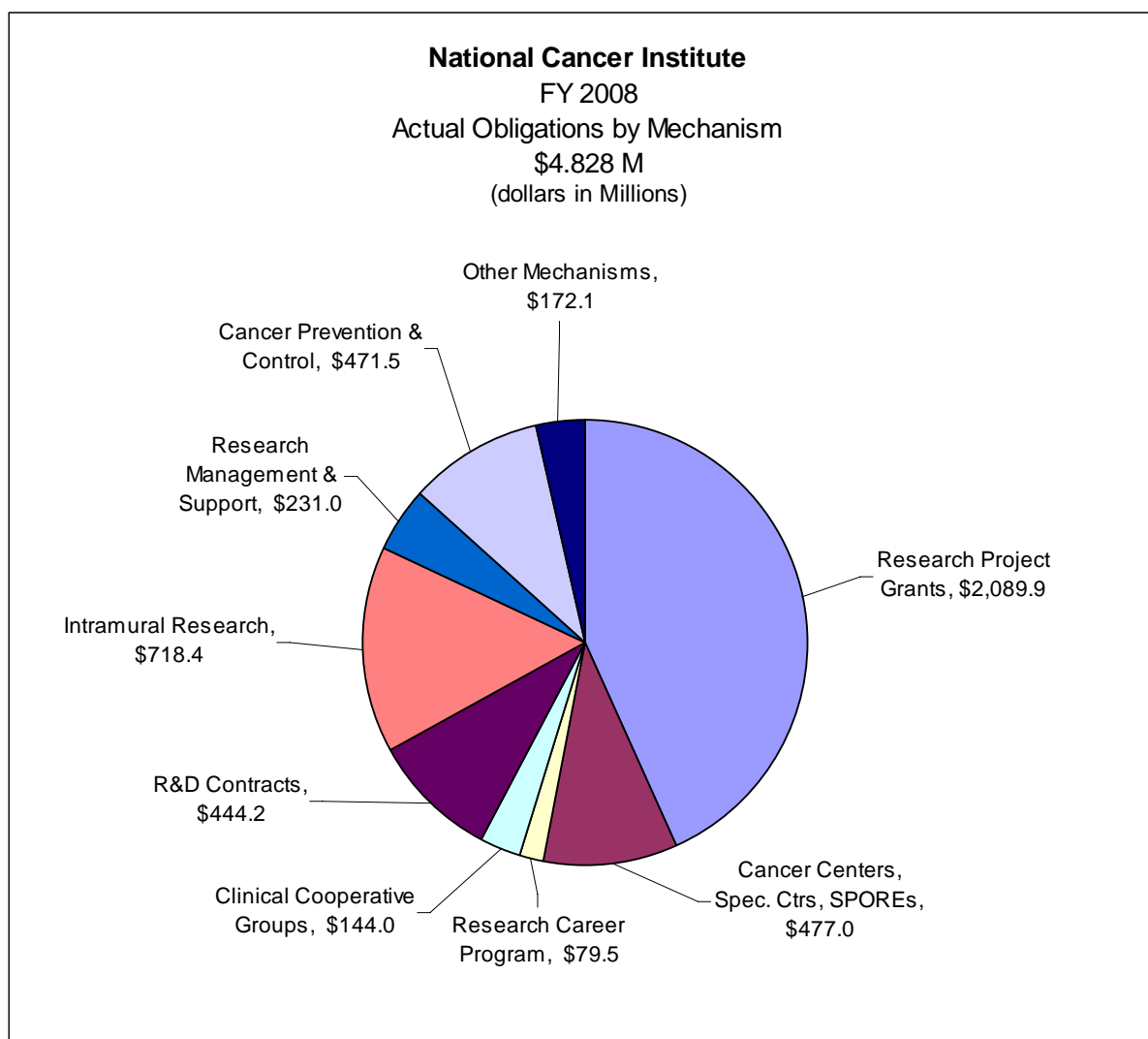
* EXCLUDES projects awarded with Stamp Out Breast Cancer funds.

Percent Share of Total NCI Dollars

Summary Points

- The mechanism shares of the total budget have remained relatively stable from FY 2003 to FY 2008.
- Intramural Research remains under 15% of total NCI dollars.

Percent Share of Total NCI Dollars					
	2004	2005	2006	2007	2008
Research Project Grants	45.8%	45.6%	45.4%	44.1%	43.3%
Cancer Centers	5.2%	5.3%	5.6%	5.7%	5.7%
Specialized Centers	0.6%	1.4%	1.6%	1.6%	1.6%
SPOREs	2.9%	2.8%	2.6%	2.6%	2.6%
Clinical Cooperative Groups	3.3%	3.0%	3.1%	3.1%	3.0%
Intramural Research	15.0%	14.8%	14.5%	14.7%	14.9%
R&D Contracts	7.7%	7.3%	7.3%	8.7%	9.2%
Cancer Prevention & Control	11.2%	11.1%	10.7%	10.4%	9.8%
Other Mechanisms	8.3%	8.7%	9.3%	9.2%	9.9%



Funding Trends

Summary Points

- The NCI budget has increased by \$103.7 million – or 2.2% – since FY 2004.
- Cancer Centers, Specialized Centers, and R&D Contracts have experienced percentage increases greater than the total NCI growth since FY 2004.

Historical Funding Trends (Dollars in Millions)

	2004	2005	2006	2007	2008
Total NCI	\$4,723.9	\$4,794.8	\$4,747.2	\$4,792.6	\$4,827.6
Research Project Grants	2,161.4	2,188.9	2,156.9	2,111.8	2,089.9
Intramural Research	708.9	711.0	687.3	706.2	718.4
Cancer Centers	245.7	255.3	265.0	273.2	274.5
Specialized Centers	14.2	66.0	73.9	74.7	79.3
SPOREs	149.4	133.0	124.9	123.8	123.3
Clinical Cooperative Groups	154.3	142.8	145.9	148.2	144.0
Cancer Prevention & Control	530.0	531.6	505.6	498.4	471.5
R&D Contracts	361.6	351.1	347.8	416.9	444.2
Other Mechanisms	398.4	415.1	439.8	439.4	482.5

% Growth by Mechanism

	2004 to 2005	2005 to 2006	2006 to 2007	2007 to 2008	2004 to 2008
Total NCI	1.5%	-1.0%	1.0%	0.7%	2.2%
Research Project Grants	1.4%	-1.5%	-2.1%	-1.0%	-3.4%
Intramural Research	0.3%	-3.3%	2.7%	1.7%	1.3%
Cancer Centers	3.9%	3.8%	3.1%	0.5%	11.7%
Specialized Centers	365.0%	12.0%	1.0%	6.2%	458.5%
SPOREs	-1.4%	-6.1%	-0.9%	-0.4%	-17.5%
Clinical Cooperative Groups	-7.5%	2.2%	1.6%	-2.8%	-6.7%
Cancer Prevention & Control	0.3%	-4.9%	1.4%	-5.4%	-11.0%
R&D Contracts	-2.9%	-0.9%	19.9%	6.6%	22.8%
Other Mechanisms	2.2%	6.0%	-0.1%	9.8%	21.1%

Research Project Grants

Summary Points

- 83% of competing dollars supported grants awarded within the established payline; 17% supported grants as an exception to the payline.
- RFA funds, which increased from the FY 2007 dollar level, accounted for 11% of FY 2007 competing dollars.
- Research Project Grant applications submitted to NCI increased by approximately 11%.
- A total of 1,266 competing RPG's were funded.

Research Project Grants

(Dollars in Thousands)

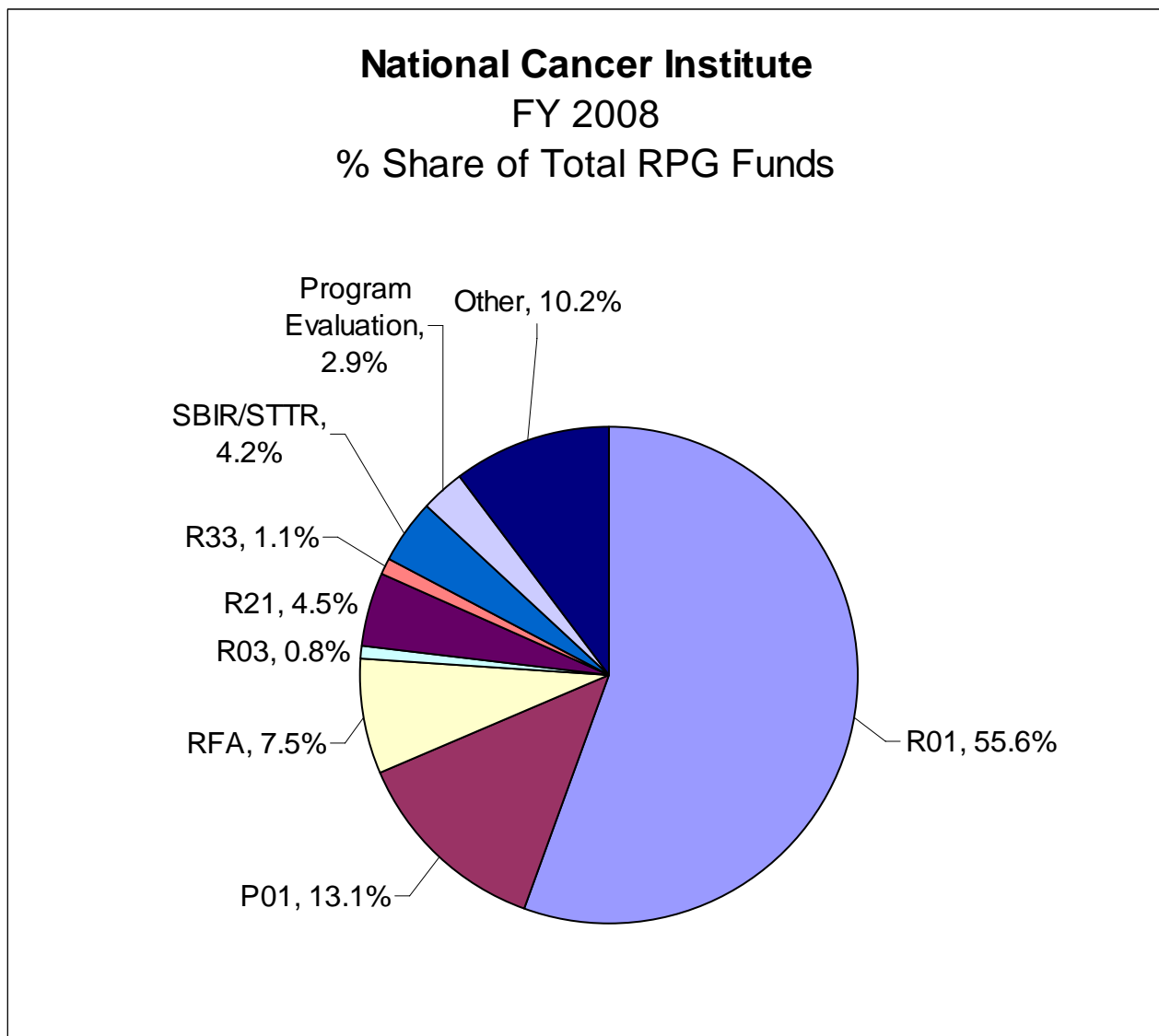
	2007*		2008*	
	No.	Amount	No.	Amount
Total funding for RPGs	5,472	\$2,111,814	5,380	\$2,089,859
SBIR/STTR	278	\$93,677	312	\$97,439
Funding for RPGs without SBIR/STTR Program	5,194	\$2,018,137	5,068	\$1,992,420
Continuation or noncompeting grants funded	3,882	\$1,488,237		
Competing grants funded	1,312	\$434,713	1,266	\$455,348
Administrative Supplements	259	\$36,466	227	\$19,697
Partial assessment for DHHS Program Evaluation		\$58,721		\$68,382
Funds set aside within competing dollars for:				
Grants within Paylines:	1,036	\$359,411	1,055	\$376,106
Traditional R01	621	\$210,161	586	\$219,267
Program Projects (P01)	30	\$66,060	23	\$42,929
RFA Grants	55	\$18,463	102	\$49,591
Share of competing grant funds		4.25%		10.89%
Exception Grants	200	\$75,302	230	\$79,242
Share of competing grant funds		17.32%		17.40%
Competing Application Requests	6,567	\$2,434,949	6,199	\$2,358,113
Funding Success Rate	20.2%		20.2%	
Percentile funding for R01 grants	15th		14th	
Average Cost-Competing		\$331		\$363
Average Reduction from recommended/requested levels		-22%		-17%

*EXCLUDES projects awarded with Stamp Out Breast Cancer funds.

Grant Funding Paylines

RPG Mechanisms:	2007	2008	
R01 Traditional Grants	15th	14th	percentile
P01 Program Projects	N/A*	N/A	priority score
R03 Small Grants	210	210	priority score
R21 Exploratory Phase I	17th	14th	percentile
R33 Exploratory Phase II	155	155	priority score
R41/R42 STTR	205	170	priority score
R43/R44 SBIR	205	245	priority score

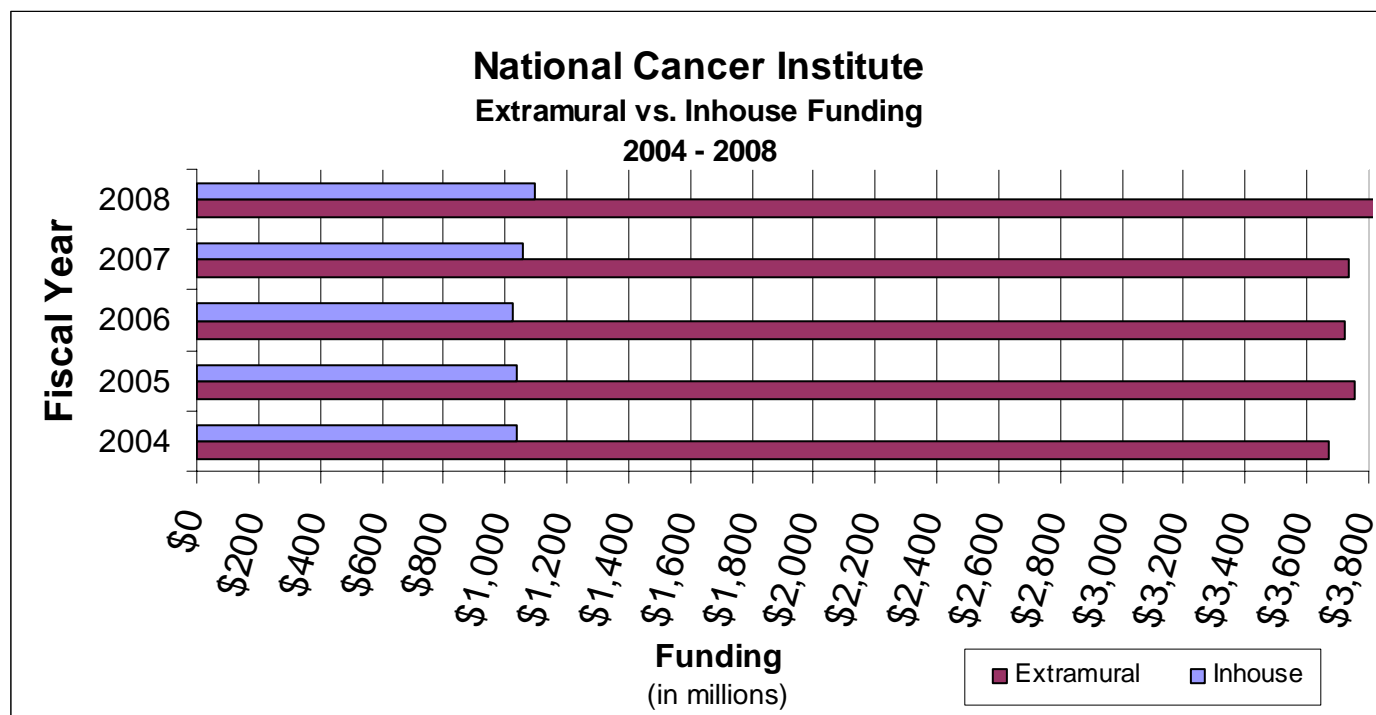
* Formal paylines for P01 grants are determined by the Executive Committee



Mechanism	Extramural					04-08% chg.
	2004	2005	2006	2007	2008	
Research Project Grants	\$2,161.4	\$2,188.9	\$2,156.9	\$2,111.8	\$2,089.9	-3.4%
Cancer Centers	245.7	255.3	265.0	273.2	274.5	11.7%
Specialized Centers	14.2	66.0	73.9	74.7	79.3	458.2%
SPOREs	149.4	133.0	124.9	123.8	123.3	-17.5%
Other Research Grants	314.9	309.0	327.1	322.9	317.8	0.9%
NRSA	66.2	67.3	66.6	68.2	69.9	5.6%
R&D Contracts	361.6	351.1	347.8	416.9	444.2	22.8%
Cancer Control Grants	220.0	232.0	213.5	200.1	190.4	-13.4%
Cancer Control Contracts	153.0	145.8	137.1	133.7	134.8	-11.9%
Construction	0	0	0	0	0	0.0%
Buildings & Facilities	0	7.9	7.9	7.9	7.9	100.0%
Total Extramural Funds	3,686.4	3,756.3	3,720.7	3,733.2	3,731.9	1.2%

Mechanism	Inhouse					04-08% chg.
	2004	2005	2006	2007	2008	
Intramural Research	\$708.9	\$711.0	\$687.3	\$706.2	\$718.4	1.3%
RMS	171.6	173.7	184.1	188.7	231.0	34.6%
Control Inhouse	157.0	154.0	155.0	164.5	146.3	-6.8%
Total Inhouse Funds	1,037.5	1,038.7	1,026.5	1,059.4	1,095.7	5.6%

Total NCI	4,709.2	4,795.0	4,747.2	4,792.6	4,827.6	2.5%
------------------	----------------	----------------	----------------	----------------	----------------	-------------



Research Career Awards – “K” Program

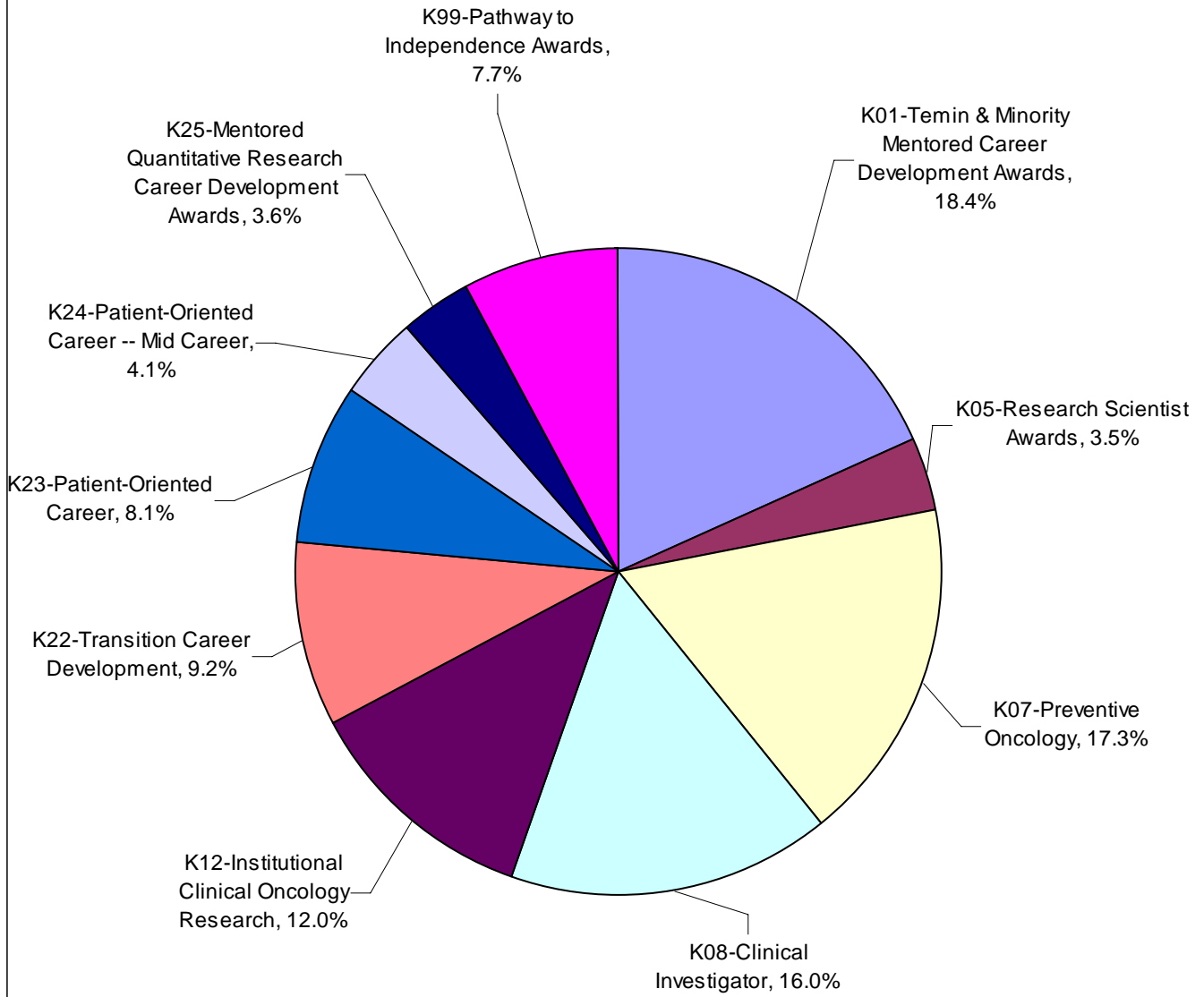
Summary Points

- The Research Career Award mechanism decreased by .08% in FY 2008.
- The number of Research Career Awards remained the same between FY 2007 and FY 2008.
- NCI funded 52 awards for the new NIH Pathway to Independence program.

(Dollars in Thousands)

		2007		2008	
		No.	Amount	No.	Amount
K01	Temin Awards	76	11,015	54	8,103
K01	Minority Mentored Career Development Award	50	6,816	48	6,528
	Subtotal, K01s	126	17,831	102	14,631
K05	Research Scientist Award	17	2,266	20	2,813
K07	Preventive Oncology	99	13,269	104	13,775
K08	Clinical Investigator	112	14,119	95	12,715
K12	Institutional Clinical Oncology Research	16	9,472	16	9,572
K22	Transition Career Development	46	7,114	47	7,284
K23	Patient-Oriented Career	51	6,845	48	6,453
K24	Patient-Oriented Career -- Mid Career	16	2,491	20	3,251
K25	Mentored Quantitative Research Career Development Award	17	2,343	21	2,881
K30	Institutional Curriculum Awards -- Administered by NCRR	5	1,462	0	0
K99	NIH Pathway to Independence Awards	20	2,383	52	6,153
	Total Research Career Program	525	79,595	525	79,528

National Cancer Institute
FY 2008
% of Total Research Award Funds



Research Dollars by Various Cancers

Summary Points

- Funding for various cancers listed below may overlap
- Funding for cancers listed below do not represent the entire NCI budget

Disease Area	2004 Actual	2005 Actual	2006 Actual	2007 Actual	2008 Actual
Total NCI Budget	\$4,723.9	\$4,794.7	\$4,747.2	\$4,792.6	\$4,827.6
AIDS	267.0	265.9	253.7	253.7	258.5
Brain & CNS	132.3	124.9	130.3	148.2	153.7
Breast Cancer	566.2	560.1	584.7	572.4	572.6
Cervical Cancer	79.0	81.7	83.3	82.4	76.8
Clinical Trials	800.0	781.8	822.3	843.7	853.2
Colorectal Cancer	262.0	253.1	244.1	258.4	273.7
Head and Neck Cancers	88.2	89.5	71.3	66.2	76.1
Hodgkins Disease	17.4	17.2	20.9	16.5	17.5
Leukemia	214.7	220.6	223.5	205.5	216.4
Liver Cancer	63.0	60.5	62.7	67.7	74.2
Lung Cancer	276.5	266.1	242.9	226.9	247.6
Melanoma	94.9	102.9	108.0	97.7	110.8
Multiple Myeloma	23.9	28.2	30.3	32.3	41.5
Non Hodgkin's Lymphoma	99.6	107.0	114.1	113.0	122.6
Ovarian Cancer	99.5	97.7	95.1	96.9	100.0
Pancreatic Cancer	52.7	66.7	74.2	73.3	87.3
Prostate Cancer	308.5	309.0	293.2	296.1	285.4
Stomach Cancer	11.6	11.0	11.5	12.0	12.4
Uterine Cancer	27.0	31.1	19.4	16.6	17.1

National Cancer Institute

Director's Biography

John E. Niederhuber, M.D.

John E. Niederhuber, M.D. became Director of the National Cancer Institute (NCI) in September 2006. Throughout his distinguished career, he has had ties to both NCI and the National Institutes of Health. In addition to his work as a surgeon, professor, researcher, department chair, senior associate dean, and cancer center director, Dr. Niederhuber has also been the chair of the National Cancer Advisory Board, an external NCI advisor and grant reviewer, and a laboratory investigator supported by NCI and the NIH. He joined NCI in September 2005 as Deputy Director for Translational and Clinical Sciences and within a few weeks was asked to serve as Chief Operating Officer to manage the NCI after Dr. Andrew von Eschenbach moved to the FDA. He officially became NCI's Acting Director in June 2006. Recently, Dr. Niederhuber was elected to the Institute of Medicine in recognition of his outstanding scientific accomplishments and commitment to service in health sciences.

In addition to his leadership of the NCI, Dr. Niederhuber heads the Laboratory of Tumor and Stem Cell Biology in NCI's Center for Cancer Research, and also holds a clinical appointment on the NIH Clinical Center Medical staff. His lab is studying tissue stem cells as the cell-of-origin for cancer, as well as the complex relationship between tumor cells and their microenvironment.

As a surgeon, Dr. Niederhuber's clinical emphasis is on gastrointestinal cancer, hepatobiliary (liver, bile duct, and gallbladder) cancer, and breast cancer. Recognized for his pioneering work in hepatic artery infusion chemotherapy, he was also the first to demonstrate the feasibility of totally implantable vascular access devices.

Prior to coming to NCI, Dr. Niederhuber spent his years as Director of the University of Wisconsin Comprehensive Cancer Center, and a professor of surgery and oncology at the University of Wisconsin School of Medicine. Earlier in his career, he chaired the Department of Surgery at Stanford University, and held professorships at the Johns Hopkins University School of Medicine and at the University of Michigan.

A native of Steubenville, Ohio, Dr. Niederhuber is a graduate of Bethany College in West Virginia and the Ohio State University School of Medicine.

Former Directors of the National Cancer Institute

Andrew C. von Eschenbach, M.D.
January 2002 – September 2005

Andrew C. von Eschenbach, M.D. became the 12th Director of the National Cancer Institute in January 2002. He is a nationally recognized urologic surgeon who formerly directed the Genitourinary Cancer Center and the Prostate Cancer Research Program at The University of Texas M.D. Anderson Cancer Center in Houston, Texas. He also served as special assistant for external affairs to M.D. Anderson's president and held the Roy M. and Phyllis Gough Huffington Clinical Research Distinguished Chair in Urologic Oncology.

Richard D. Klausner, M.D.
August 1995 – September 2001

Dr. Klausner was appointed as the Director of the National Cancer Institute (NCI) on August 1, 1995. From 1984 until 1997 he was Chief of the Cell Biology and Metabolism Branch of the National Institute of Child Health & Human Development.

Samuel Broder, M.D.
December 1988 – March 1995

Dr. Broder joined NCI in 1972 as a Clinical Associate in the Metabolism Branch. In 1981, he became Associate Director for NCI's Clinical Oncology Program.

Vincent T. DeVita, Jr., M.D.
January 1980 – June 1980 (Acting)
July 1980 – August 1988

Dr. DeVita joined NCI in 1963 as a Clinical Associate in the Laboratory of Chemical Pharmacology. He served NCI as head of the Solid Tumor Service, Chief of the Medicine Branch, Director of the Division of Cancer Treatment and Clinical Director prior to his appointment as Director of NCI.

Arthur Canfield Upton, M.D.
July 1977 – December 1979

Prior to his tenure as NCI Director, Dr. Upton served as Dean of the School of Basic Health Sciences at the State University of New York at Stony Brook.

Frank Joseph Rauscher, Jr., Ph.D.
May 1972 – October 1976

Dr. Rauscher served as Scientific Director for Etiology, NCI, prior to his appointment as Director of NCI in 1972.

Carl Gwin Baker, M.D.
November 1969 – July 1970 (Acting)
July 1970 – April 1972

During his tenure with PHS, Dr. Baker served as Scientific Director for Etiology, NCI, and as Acting Director of NCI prior to his appointment as Director in July 1970.

Kenneth Milo Endicott, M.D.
July 1960 – November 1969

Dr. Endicott served as Chief of the Cancer Chemotherapy National Service Center, PHS, and as Associate Director, NIH, prior to being appointed Director of NCI in July 1960.

John Roderick Heller, M.D.
May 1948 – June 1960

Dr. Heller joined PHS in 1934 and became Chief of the Venereal Disease Division prior to his appointment as Director of NCI in 1948.

Leonard Andrew Scheele, M.D.
July 1947 – April 1948

Dr. Scheele served in various capacities during his tenure with PHS prior to his appointment as Assistant Chief and, subsequently, Director of NCI in July 1947.

Roscoe Roy Spencer, M.D.
August 1943 – July 1947

Dr. Spencer became NCI's first Assistant Chief and, subsequently, was appointed Director of the Institute in 1943.

Carl Voegtlin, Ph.D.
January 1938 – July 1943

Dr. Voegtlin served as Professor of Pharmacology and Chief of the Division of Pharmacy at the Hygienic Laboratory prior to becoming the first Director of NCI in 1938.

National Cancer Advisory Board

Membership and Term

Chairperson

- 2010 Carolyn D. Runowicz, M.D.
The Carol and Ray Neag Comprehensive
Cancer Center
University of Connecticut Health Center
Farmington, CT 06030
- 2012 Anthony Atala, M.D.
Wake Forest Institute for Regenerative
Medicine
Department of Urology
Wake Forest University School of Medicine
Winston-Salem, NC 27157
- 2012 Bruce A. Chabner, M.D.
Massachusetts General Hospital
Cancer Center
Massachusetts General Hospital
Boston, MA 02114
- 2014 Victoria L. Champion, D.N.S.
Center for Research & Scholarship
Indiana University School of Nursing
Indianapolis, IN 46202
- 2008 Moon S. Chen, Jr., Ph.D., M.P.H.
Asian American Network for Cancer
Awareness Research and Training
Population Research and Cancer Disparities
University of California Davis Cancer Center
University of California
Sacramento, CA 95817
- 2012 Donald S. Coffey, Ph.D.
Departments of Urology/Oncology/Pathology
Pharmacology and Molecular Science
Johns Hopkins University School of Medicine
Baltimore, MD 21287
- 2008 Kenneth H. Cowan, M.D., Ph.D.
UNMC Eppley Cancer Center
Eppley Institute for Research in Cancer
University of Nebraska Medical Center
Omaha, NE 68198
- 2008 Jean B. deKernion, M.D.
Department of Urology
David Geffen School of Medicine
University of California at Los Angeles
Los Angeles, CA 90095
- 2014 Waun Ki Hong, M.D.
Department of Thoracic/Head & Neck
Medical Oncology
The University of Texas M.D. Anderson
Cancer Center
Houston, TX 77030
- 2012 Mr. Robert A. Ingram
GlaxoSmithKline
Research Triangle Park, NC 27709
- 2012 Judith S. Kaur, M.D.
Native American Programs
Mayo Comprehensive Cancer Center
Department of Medical Oncology
Mayo Clinic
Rochester, MN 55905
- 2010 Mr. David H. Koch
Koch Industries
New York, NY 10021
- 2014 Mary Vaughan Lester
Board of Directors
University of California,
San Francisco Foundation
Los Angeles, CA 99024
- 2010 Diana M. Lopez, Ph.D.
Department of Microbiology and Immunology
University of Miami Miller School of Medicine
Miami, FL 33136
- 2014 H. Kim Lysterly, M.D.
Duke Comprehensive Cancer Center
Duke University Medical Center
Durham, NC 27705
- 2012 Karen Dow Meneses, Ph.D.
School of Nursing
University of Alabama at Birmingham
Birmingham, AL 35294
- 2014 Jennifer A. Pietenpol, Ph.D.
Vanderbilt-Ingram Cancer Center
B.F. Byrd, Jr. Professor of Oncology
Professor of Biochemistry
Vanderbilt University Medical Center
Nashville, TN 37232

National Cancer Advisory Board

Membership and Term

2010 Lloyd K. Everson, M.D.
US Oncology Incorporated
Houston, TX 77060

2008 Judah Folkman, M.D.
Vascular Biology Program
Children's Hospital of Boston
Harvard Medical School
Karp Family Research Laboratories
Boston, MA 02115

2010 Kathryn Giusti, M.B.A.
Multiple Myeloma Research Foundation, Inc.
Multiple Myeloma Research Consortium
Norwalk, CT 06851

2014 William H. Goodwin, Jr.
CCA Industries, Inc.
Richmond, VA 23219

2008 Franklyn G. Prendergast, M.D., Ph.D.
Mayo Clinic Comprehensive Cancer Center
Mayo Foundation
Rochester, MN 55905

2008 Lydia G. Ryan, M.S.N., P.N.P.
Children's Healthcare of Atlanta
AFLAC Cancer Center
Atlanta, GA 30322

2010 Daniel D. Von Hoff, M.D., F.A.C.P.
Translational Drug Development Division
Translational Genomics Research Institute
University of Arizona Department of Medicine
Phoenix, AZ 85004

Executive Secretary

Paulette S. Gray, Ph.D.

Committee Management Officer

Ms. Claire L. Harris

National Cancer Advisory Board (Continued)

Ex Officio Members

The Honorable Dr. S. Ward Casscells

Assistant Secretary of
Defense for Health Affairs
The Pentagon
Washington, DC 20210

The Honorable Elaine Chao, M.B.A.

Secretary of Labor
Washington, DC 20210

Andrew C. von Eschenbach, M.D.

Commissioner
Food and Drug Administration
Rockville, MD 20857

John Howard, M.D., M.P.H., J.D., LL.M.

Director
National Institute for Occupational Safety and
Health
Washington, DC 20201

Mr. Stephen L. Johnson

Administrator
Environmental Protection Agency
Washington, DC 20460

The Honorable Michael J. Kussman, M.D., M.S., M.A.C.P.

Under Secretary for Health
Veterans Health Administration
Department of Veterans Affairs
Washington, DC 20420

The Honorable Michael O. Leavitt

Secretary
Department of Health and Human Services
Washington, DC 20201

The Honorable John H. Marburger, III, Ph.D.

Science Advisor to the President
Director
Office of Science and Technology Policy
Executive Office of the President
Washington, DC 20502

Ms. Nancy A. Nord

Acting Chairperson
Consumer Product Safety Commission
Bethesda, MD 20814

Anna Palmisano, Ph.D.

Associate Director
Office of Biological and Environmental Research
Department of Energy
Washington, DC 20585

Samuel H. Wilson, M.D.

Acting Director
National Institute of Environmental Health Sciences
National Institutes of Health
Research Triangle Park, NC 27709

Elias A. Zerhouni, M.D.

Director
National Institutes of Health
Bethesda, MD 20892

National Cancer Advisory Board (Continued)

Alternates to Ex Officio Members

Michael A. Babich, Ph.D.
Directorate for Health Sciences
U.S. Consumer Product Safety Commission
Bethesda, MD 20814
(Ms. Nancy A. Nord - CPSC)

Patricia Bray, M.D., MPH
Acting Director, Office of Occupational Medicine
OSHA / Department of Labor
Washington, DC 20210
(The Honorable Elaine Chao – DOL)

Allen Dearry, Ph.D.
Interim Associate Director
National Toxicology Program
National Institute of Environmental Health Sciences
National Institutes of Health
Research Triangle Park, NC 27709
(Samuel H. Wilson, M.D., - NIEHS)

Diane C. DiEuliis, Ph.D.
Senior Policy Analyst
Office of Science and Technology Policy
Executive Office of the President
Washington, DC 20502
(John H. Marburger III, Ph.D. –OSTP)

Michael Kelley, M.D., FACP
National Program Director for Oncology
Veterans Health Administration
Department of Veterans Affairs
Durham, NC 27705
(The Honorable Dr. Michael J. Kussman)

Raynard Kington, M.D., Ph.D.
Deputy Director
National Institutes of Health
Bethesda, MD 20892
(Elias A. Zerhouni, M.D., - NIH)

Peter Kirchner, M.D.
Senior Scientist
Office of Biological & Environmental Research
Division of Medical Science
U.S. Department of Energy
Germantown, MD 20874-1290
(Anna Palmisano, Ph.D. - DOE)

Richard Pazdur, M.D.
Division Director
Division of Oncology Drugs
Food and Drug Administration
Rockville, MD 20857
(Andrew C. von Eschenbach, M.D. - FDA)

John F. Potter, M.D.
Director
United States Military Cancer Institute
Walter Reed Army Medical Center
Washington D.C. 20307
(The Honorable Dr. S. Ward Casscells - DOD)

R. Julian Preston, Ph.D.
Acting Associate Director for Health
U.S. Environmental Protection Agency
Research Triangle Park, NC 27703
(Mr. Stephen L. Johnson - EPA)

Dori Reissman, M.D., MPH
Senior Medical Advisor
Office of the Director, NIOSH
Capt (sel), U.S. Public Health Service
Washington, DC 20201
(John Howard, M.D., M.P.H., J.D., LL.M. - NIOSH)

Note: Bold print represents Ex Officio Members

NATIONAL CANCER ADVISORY BOARD (Continued)

NCAB SUBCOMMITTEE ASSIGNMENTS

Subcommittee on Activities and Agenda

Dr. Carolyn Runowicz - Chair
Dr. Victoria Champion
Dr. Diana Lopez
Dr. Karen Meneses
Executive Secretary: Dr. Paulette Gray
(301) 496-5147

Subcommittee on Cancer Centers

Kim Lyerly - Chair
Dr. Bruce Chabner
Dr. Victoria Champion
Dr. Lloyd Everson
Mr. William Goodwin
Dr. Judith Kaur
Dr. Karen Meneses
Dr. Jennifer Pietenpol
Executive Secretary: Dr. Linda Weiss
(301) 496-8531

Subcommittee on Clinical Investigations

Dr. Waun Ki Hong - Chair
Dr. Anthony Atala
Dr. Lloyd Everson
Ms. Kathryn Giusti
Mr. William Goodwin
Dr. Judith Kaur
Ms. Mary Lester
Dr. Kim Lyerly
Dr. Daniel Von Hoff
Executive Secretary: Dr. Jeff Abrams
(301) 496-2522

Subcommittee on Planning and Budget

Dr. Bruce Chabner - Chair
Mr. William Goodwin
Mr. David Koch
Dr. Diana Lopez
Dr. Kim Lyerly
Executive Secretary: Mr. Jim Dickens
(301) 496-5803

Subcommittee on Special Actions

Dr. Karen Meneses - Chair
Committee of the Whole
Executive Secretary: Dr. Paulette Gray
(301) 496-5147

Ad hoc Subcommittee on Biomedical Technology

Dr. Donald Coffey - Chair
Dr. Anthony Atala
Ms. Kathryn Giusti
Mr. David Koch
Ms. Mary Lester
Dr. Kim Lyerly
Dr. Jennifer Pietenpol
Executive Secretary: Dr. Carolyn Compton
(301) 496-1550

Ad hoc Subcommittee on Communications

Dr. Diana Lopez - Chair
Dr. Victoria Champion
Dr. Lloyd Everson
Mr. Robert Ingram
Dr. Judith Kaur
Ms. Mary Lester
Dr. Kim Lyerly
Dr. Karen Meneses
Executive Secretary: Ms. Lenora Johnson
(301) 451-4056

Ad hoc Subcommittee on Experimental Therapeutics

Dr. Daniel Von Hoff - Chair
Dr. Bruce Chabner
Mr. William Goodwin
Dr. Waun Ki Hong
Dr. Kim Lyerly
Executive Secretary: Dr. Joseph Tomaszewski
(301) 496-6711

Board of Scientific Counselors Intramural Programs

Clinical Sciences and Epidemiology

Appointees	Expiration of Appointment	Appointees	Expiration of Appointment
Chair - Theodore Lawrence, M.D., Ph.D.	2009		
Wadih Arap, M.D., Ph.D.	2011	Susan Leigh, RN	2008
Martin Blaser, M.D.	2010	Maria Martinez, Ph.D.	2010
Michael Caligiuri, M.D.	2011	Susan Mayne, Ph.D.	2009
Eugenia Calle, Ph.D.	2011	Monica Morrow, M.D.	2010
William Cance, M.D.	2011	Andrew Olshan, Ph.D.	2009
David Carbone, M.D., Ph.D.	2010	Timothy Rebbeck, Ph.D.	2009
Esteban Celis, M.D., Ph.D.	2008	Eric Rowinsky, M.D.	2008
Leland Chung, Ph.D.	2008	Charles Sawyers, M.D.	2009
Scott Davis, Ph.D.	2010	Daniel Schaid, Ph.D.	2011
Barbara Gilchrest, M.D.	2009	Paul Sondel, M.D., Ph.D.	2009
Richard Hoppe, M.D.	2010	Ann Thor, M.D.	2010
Elizabeth Jaffee, M.D.	2010		
Bruce Korf, M.D., Ph.D.	2008	Executive Secretary - Brian Wojcik, Ph.D.	

Basic Sciences

Chair - Katherine Jones, Ph.D.	2008		
Cory Abate-Shen, Ph.D.	2011	Wendell Lim, Ph.D.	2011
Dafna Bar-Sagi, Ph.D.	2011	Frank Rauscher, Ph.D.	2010
Stephen Benkovic, Ph.D.	2008	Martine Roussel, Ph.D.	2008
Christine Biron, Ph.D.	2010	Leona Samson, Ph.D.	2010
Selina Chen-Kiang, Ph.D.	2011	Robert Siliciano, M.D., Ph.D.	2009
Olivera Finn, Ph.D.	2010	Paul Spearman, M.D.	2011
Michael Gould, Ph.D.	2009	Joseph Testa, Ph.D.	2010
James Haber, Ph.D.	2010	Paul Ts'o, Ph.D.	2010
Nancy Haigwood, Ph.D.	2011	Teresa Wang, Ph.D.	2008
Thomas Hamilton, Ph.D.	2011	Jerry Workman, Ph.D.	2009
Laurence Hurley, Ph.D.	2011	Ming You, Ph.D.	2011
Michael Karin, Ph.D.	2010		
Laimonis Laimins, Ph.D.	2009	Executive Secretary - Florence E. Farber, Ph.D.	

Board of Scientific Advisors Extramural Programs

Chair - Robert C. Young	2009		
Paul M. Allen, Ph.D.	2011	Marc A. Kastner, Ph.D.	2012
Christine B. Ambrosone, Ph.D.	2012	Timothy J. Kinsella, M.D.	2012
Hoda A. Anton-Culver, Ph.D.	2008	Christopher J. Logothetis, M.D.	2009
Kirby I. Bland, M.D.	2009	Kathleen H. Mooney, Ph.D., F.A.A.N., R.N	2010
Michael A. Caligiuri, M.D.	2012	James L. Omel, M.D.	2012
Curt I. Civin, M.D.	2012	Edith A. Perez, M.D.	2009
Susan J. Curry, Ph.D.	2010	Richard L. Schilsky, M.D.	2008
William S. Dalton, M.D., Ph.D.	2010	Robert D. Schreiber, Ph.D.	2010
Kathleen M. Foley, M.D.	2009	Stuart L. Schreiber, Ph.D.	2012
Sanjiv S. Gambhir, M.D., Ph.D.	2009	Ellen V. Sigal, Ph.D.	2009
Todd R. Golub, M.D.	2011	Bruce W. Stillman, Ph.D.	2012
Joe W. Gray, Ph.D.	2009	Victor J. Strecher, Ph.D. MPH	2012
William N. Hait, M.D., Ph.D.	2008	Jean Y. Wang, Ph.D.	2011
Leland H. Hartwell, Ph.D.	2011	Jane C. Weeks, M.D.	2009
James R. Heath, Ph.D.	2010	Irving L. Weissman, M.D.	2012
Mary J. Hendrix, Ph.D.	2009	James K. V. Willson, M.D.	2011
Leroy E. Hood, Ph.D., M.D.	2009		
		Executive Secretary - Paulette S. Gray, Ph.D.	

President's Cancer Panel

LaSalle D. Leffall, Jr. M.D., F.A.C.S. 2010

Chairman
Charles R. Drew Professor of Surgery
Howard University Hospital
2041 Georgia Avenue, NW
Suite 4000
Washington, DC 20060

Margaret L. Kripke, Ph.D. 2009

Executive Vice President/Chief Academic Officer
University of Texas
M.D. Anderson Cancer Center
Unit 113
1515 Holcombe Boulevard
Houston, TX 77030

Joseph P. Torre 2011

Manager
Los Angeles Dodgers
Dodger Stadium
Los Angeles, CA 90026

Abby B. Sandler, Ph.D.

Executive Secretary
6116 Executive Blvd.
Suite 212, MSC 8349
Bethesda, MD 20892-8349

Executive Committee Members

John E. Niederhuber, M.D.

Director

Peter Greenwald, M.D., Dr.Ph

Director, Division of Cancer Prevention

Anna D. Barker, Ph.D.

Deputy Director for Advanced Technologies and
Strategic Partnerships

Ernest T. Hawk, M.D., M.P.H.

Director, Office of Centers, Training
and Resources

Kenneth H. Buetow, Ph.D.

Director, Center for Biomedical Informatics
and Information Technology

Alan S. Rabson, M.D.

Deputy Director

Robert T. Croyle, Ph.D.

Director, Division of Cancer Control and
Population Sciences

Lawrence J. Ray, J.D.

Deputy Director for Management

James H. Doroshow, M.D.

Director, Division of Cancer Treatment
and Diagnosis

Dinah S. Singer, Ph.D.

Director, Division of Cancer Biology

Joseph F. Fraumeni, Jr., M.D.

Director, Division of Cancer Epidemiology and
Genetics

Sanya A. Springfield, Ph.D.

Director, Center to Reduce
Cancer Health Disparities

Paulette S. Gray, Ph.D.

Director, Division of Extramural Activities

Robert H. Wiltout, Ph.D.

Director, Center for Cancer Research

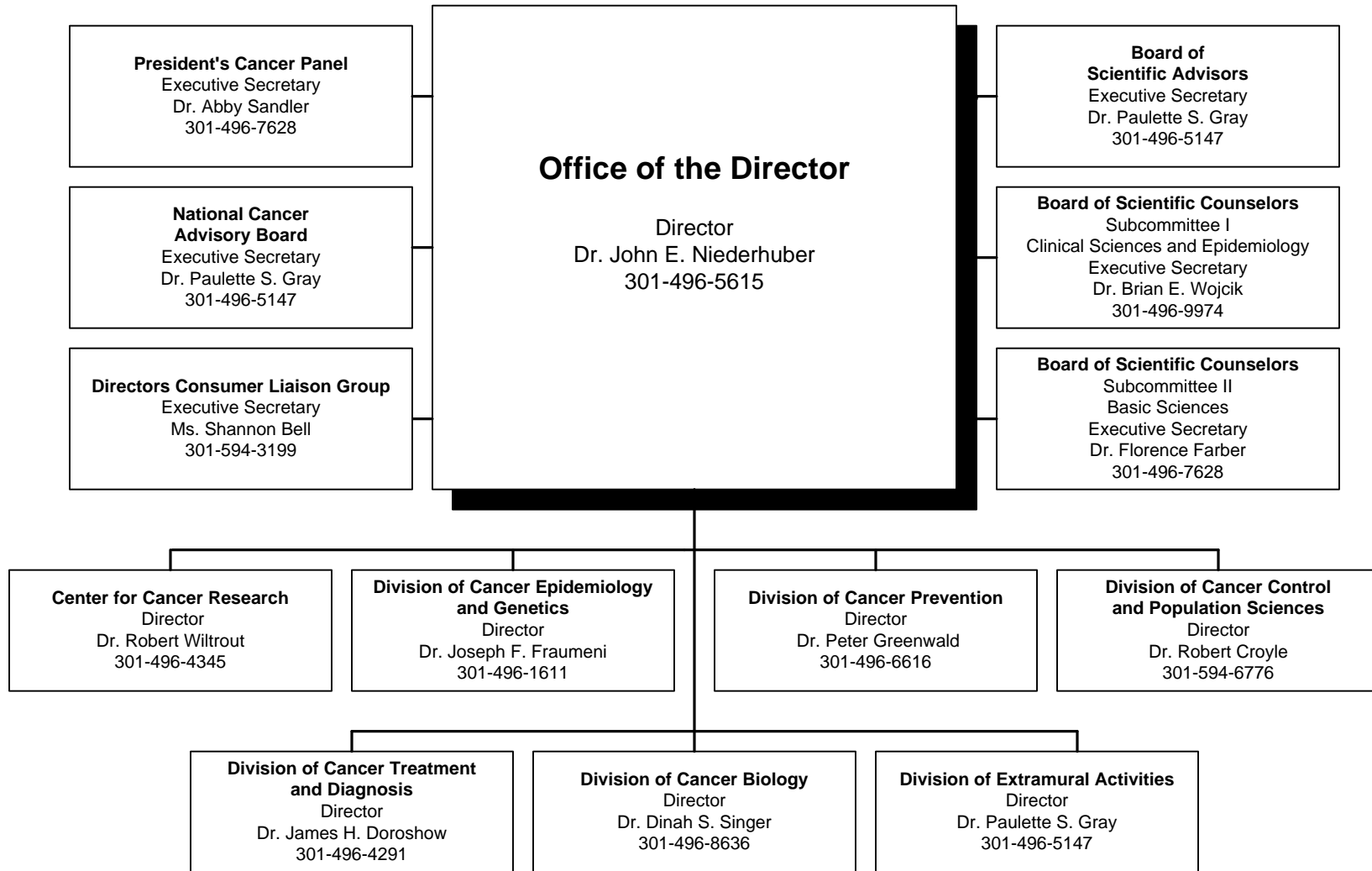
Joy Wiszneauckas, M.B.A

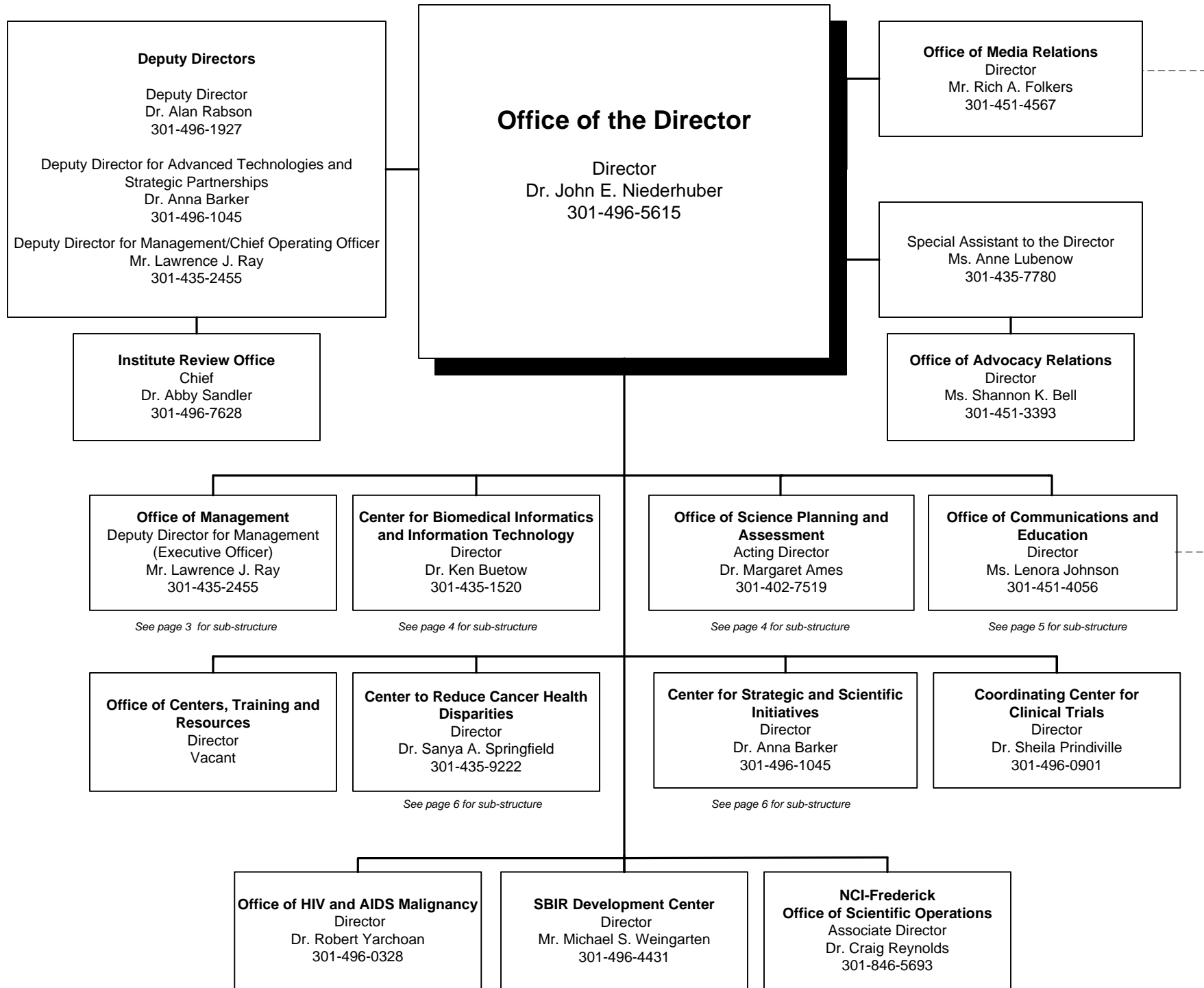
Executive Secretary

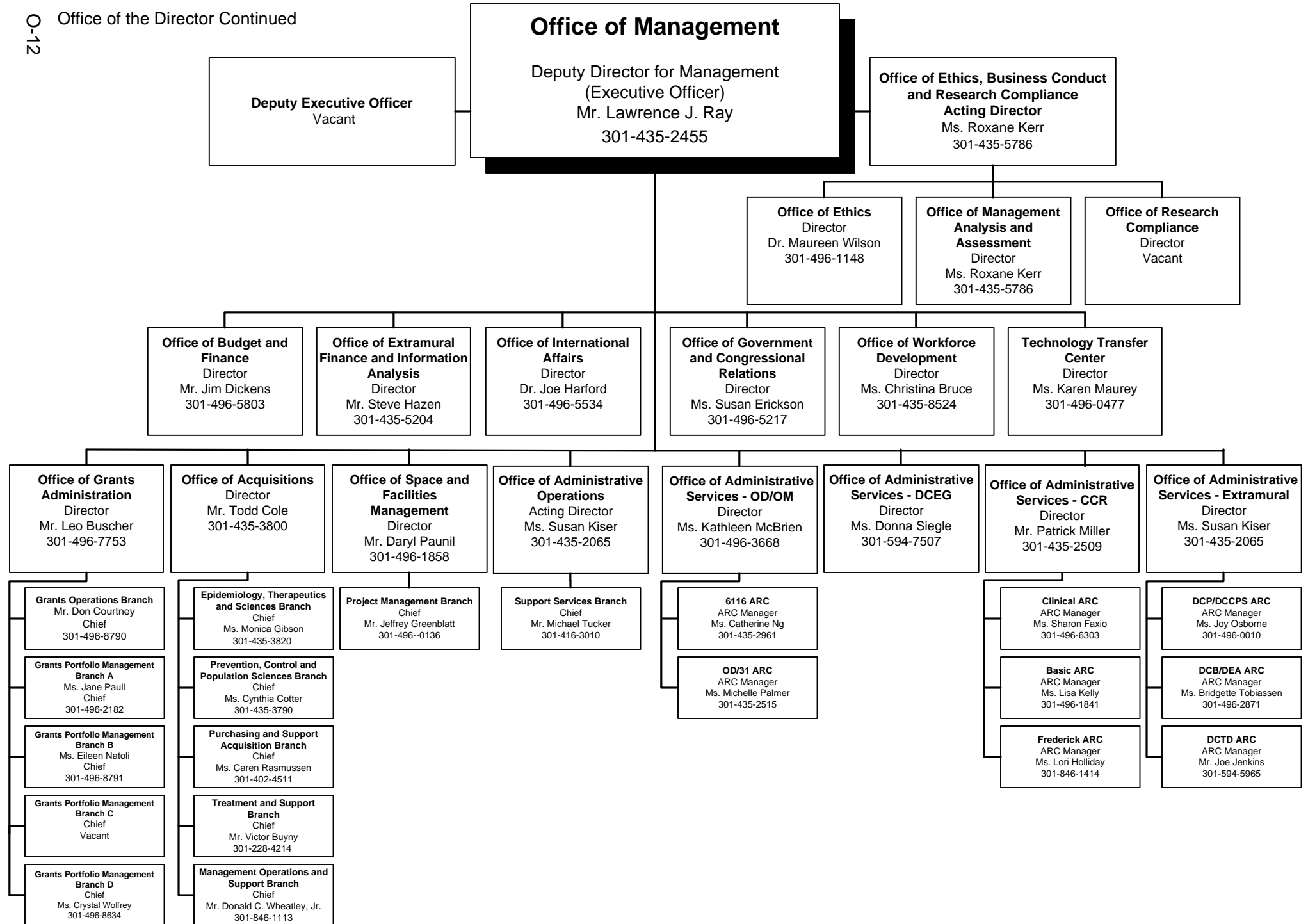
NCI Director's Consumer Liaison Group

Mr. Doug Ulman, Chair Lance Armstrong Foundation	2008	Ms. Kelly L. Cotter CureSearch National Childhood Cancer Foundation	2008
Dr. Beverly Laird, Vice Chair American Cancer Society Komen Breast Cancer Foundation	2008	Marie E. Dahlstrom De La Mano Frente Al Cancer: Latino Cancer Coalition	2011
Ms. Margaret L. Anthony Yul Brynner Head and Neck Foundation	2008	Ms. Nancy Davenport-Ennis Patient Advocate Foundation	2008
Mr. William Bro Kidney Cancer Association	2008	Everett E. Dodson Prostate NET	2011
Dr. Grace L. Butler Hope through GRACE, Inc.	2008	Joyce Wilcox Graff VHL Family Alliance	2011
Ms. Lourie Campos Community Health Partnership	2008	Alan M. Kaye National Cervical Cancer Coalition	2008
Ms. Yvette Colon American Pain Foundation	2008	Ms. Celeste Whitewolf Native People's Circle of Hope	2008
		Col. (Ret.) James Williams Pennsylvania Prostate Cancer Coalition	2008
		Arlene Wahwasuck Four Tribes Women's Wellness Coalition	2011
		Ms. Barbara H. Guest, Executive Secretary Director's Consumer Liaison Group Office of Advocacy Relations National Cancer Institute 6116 Executive Boulevard, Suite 220 Bethesda, MD 20892	

National Cancer Institute







**Center for Biomedical Informatics
and Information Technology**

Director
Dr. Ken Buetow
301-435-1520

Deputy Director
Vacant

Infrastructure Branch

Acting Chief
Mr. Eric Williams
301-594-0764

**Information Technology Support
Branch**

Chief
Vacant

Informatics Operations Branch

Acting Chief
Dr. George Komatsoulis
301-451-2881

Resource Management Branch

Chief
Mr. Jeffrey Weiner
301-496-7058

**Office of Science Planning and
Assessment**

Acting Director
Dr. Margaret Ames
301-402-7519

Deputy Director
Dr. Margaret Ames
301-402-7519

**Women's Health
Officer**

Ms. Karen Parker
301-451-9462

Science Planning Branch

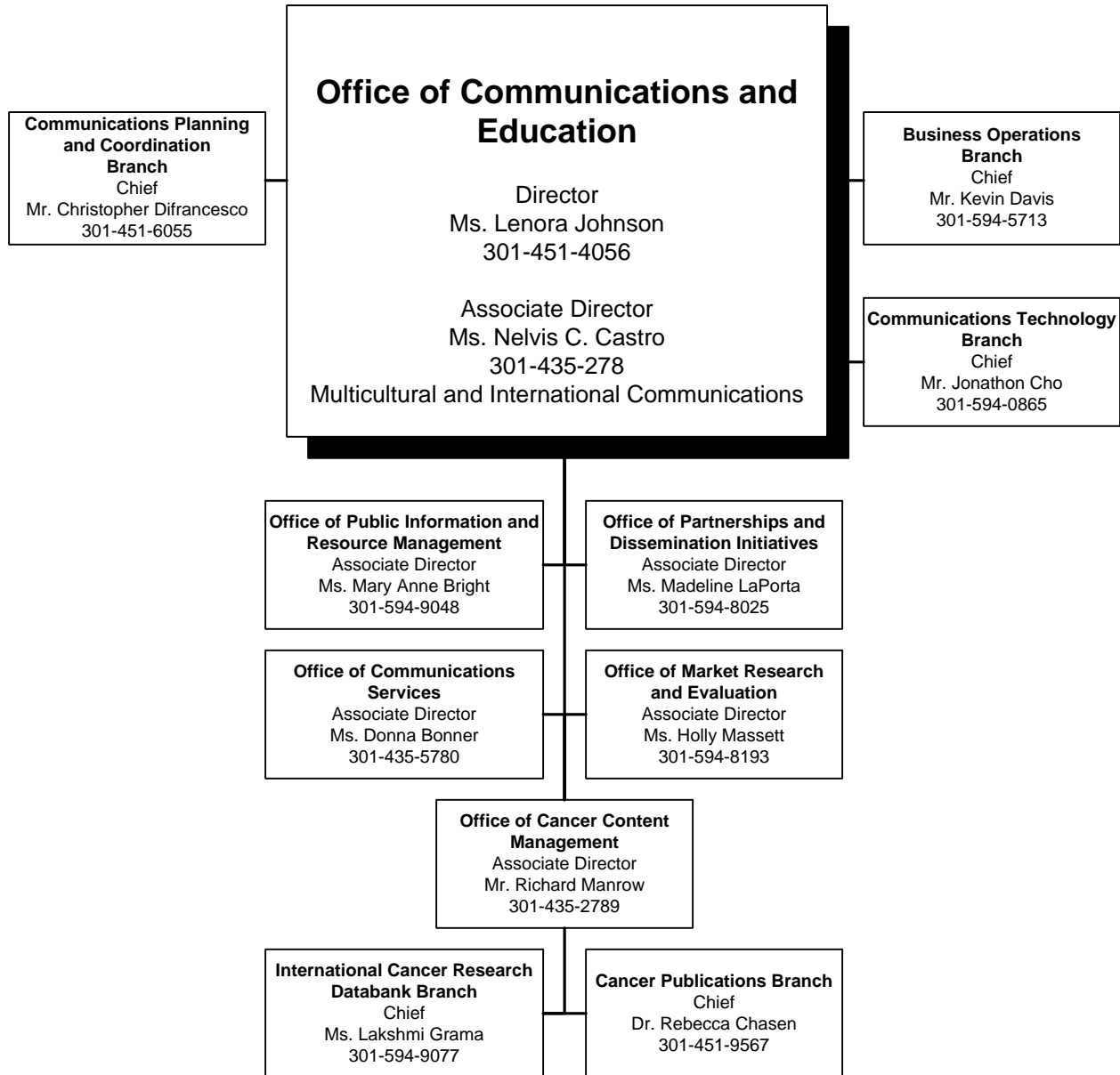
Chief
Dr. Lisa Stevens
301-435-3861

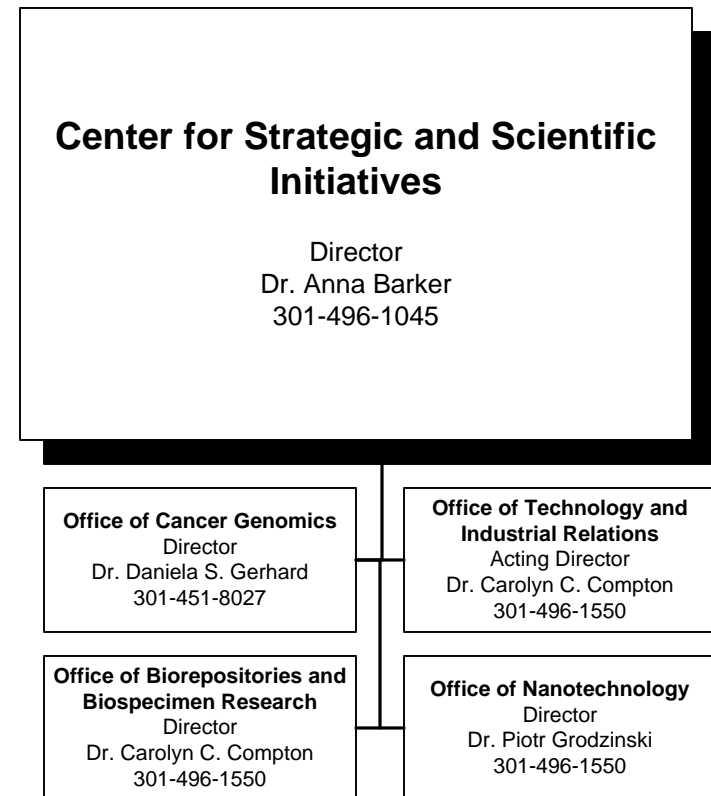
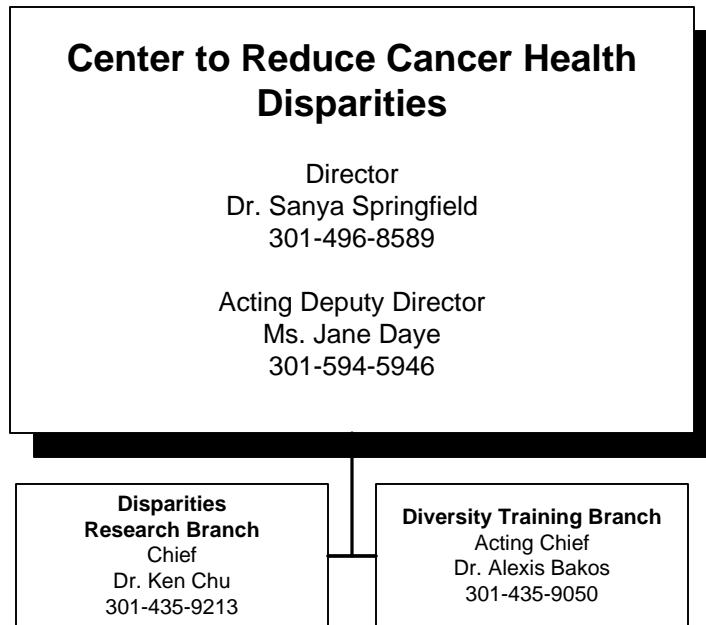
Program Assessment Branch

Chief
Dr. James Corrigan
301-435-3856

Program Implementation Branch

Chief
Ms. Susanne Strickland
301-496-5516



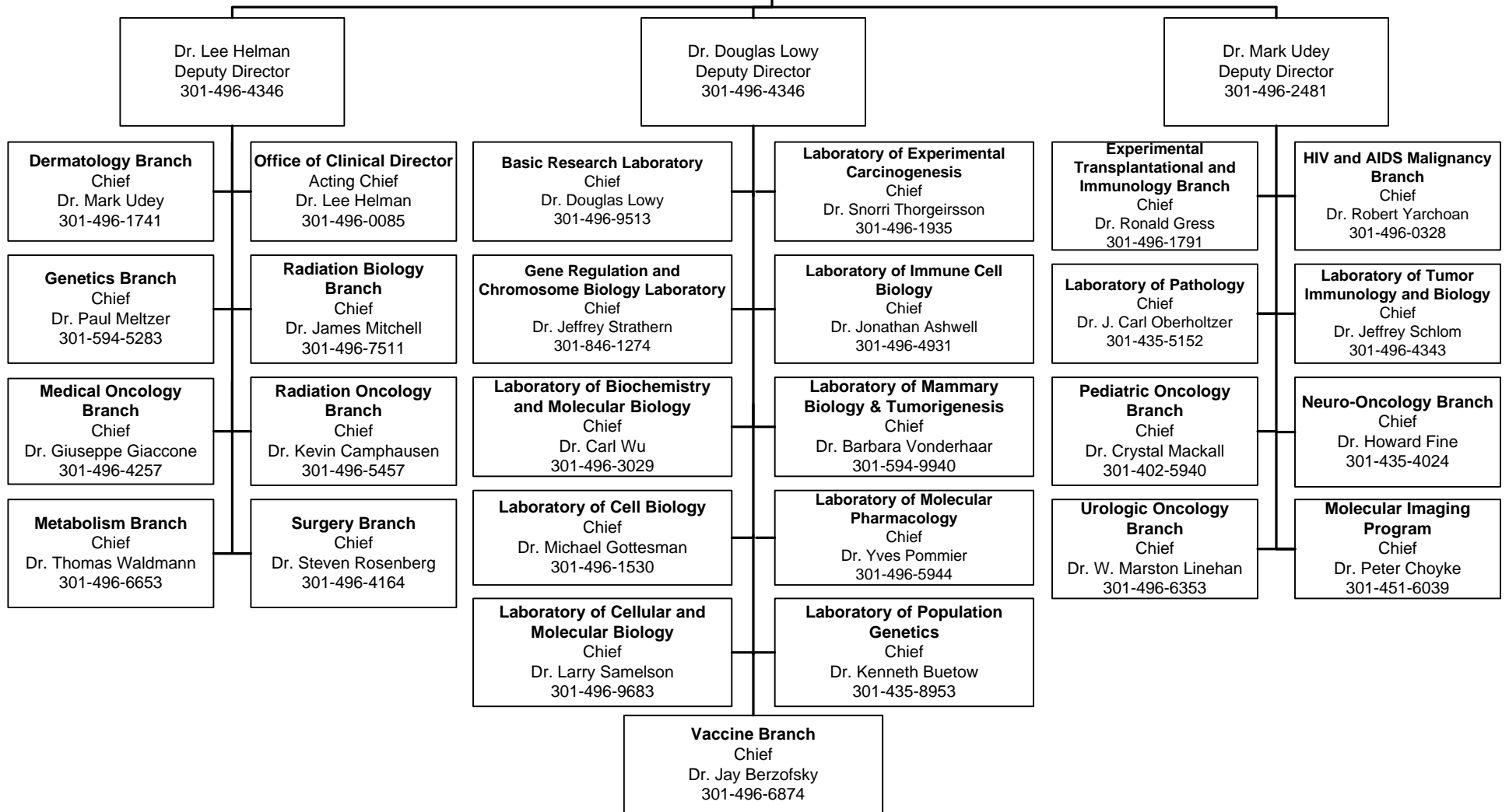


**Center for Cancer Research
Office of the Director**

Director
Dr. Robert Wiltrout
301-496-4345

Dr. Lee Helman
Scientific Director for Clinical Research
301-496-4346

Dr. L. Michelle Bennett
Deputy Director
301-496-4345



**Center for Cancer Research
Office of the Director**

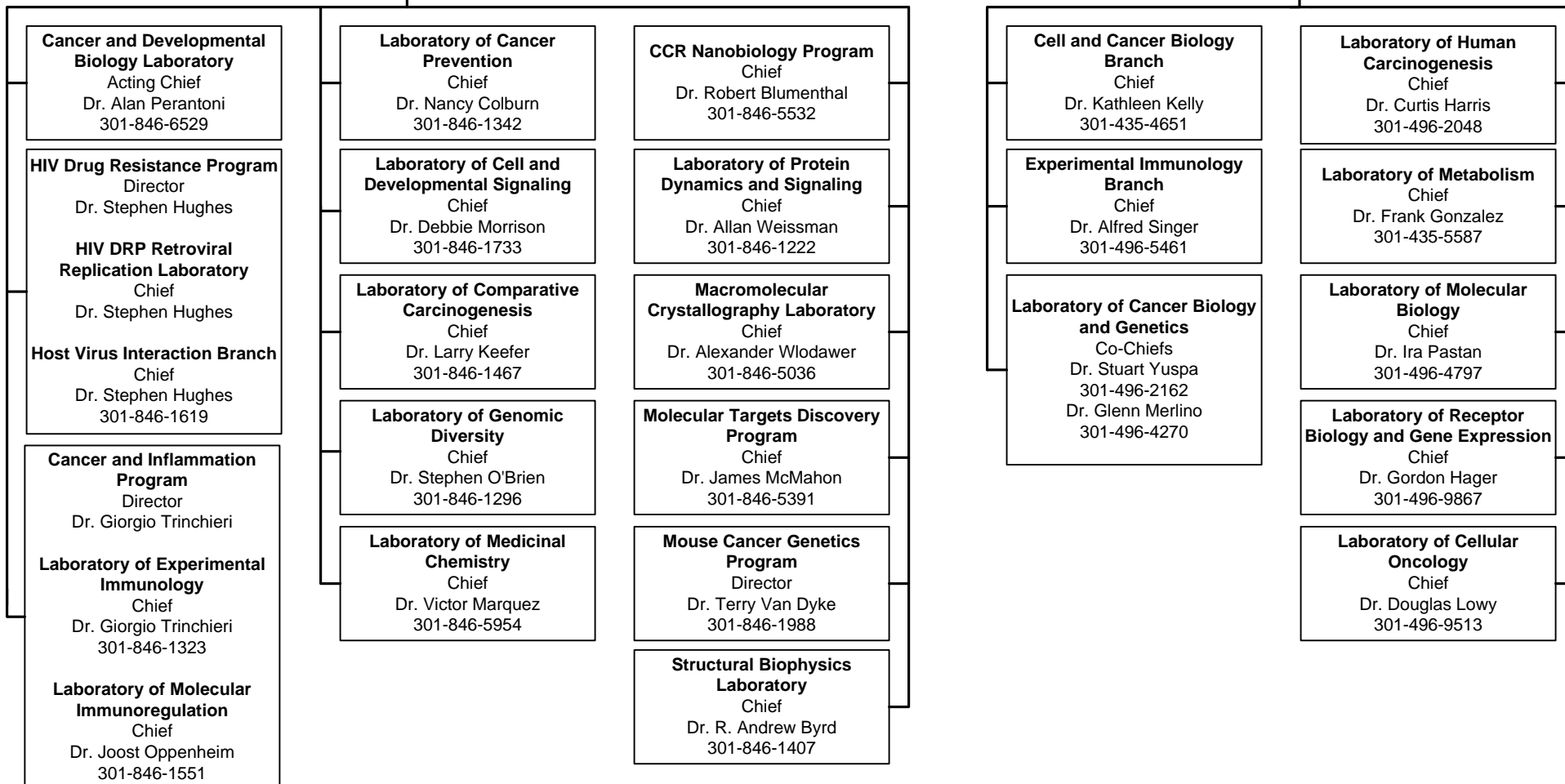
Director
Dr. Robert Wiltrout
301-496-4345

Dr. Lee Helman
Scientific Director for Clinical Research
301-496-4346

Dr. L. Michelle Bennett
Deputy Director
301-496-4345

Dr. Jeffrey Strathern
Deputy Director
301-846-1274

Dr. Lawrence Samelson
Deputy Director
301-496-4346



Division of Cancer Biology

Office of the Director

Director

Dr. Dinah S. Singer
301-496-8636

Deputy Director

Dr. Dan Gallahan
301-496-8636

Associate Director

Dr. Cheryl Marks
301-594-8778

Associate Director

Dr. Suresh Mohla
301-435-1878

Cancer Etiology Branch

Chief

Dr. Don Blair
301-496-9740

Tumor Biology and Metastasis Branch

Chief

Dr. Suresh Mohla
301-435-1878

Cancer Immunology and Hematology Branch

Chief

Dr. R. Allan Mufson
301-496-7815

DNA and Chromosome Aberrations Branch

Chief

Dr. Judith Mietz
301-496-9326

Cancer Cell Biology Branch

Chief

Dr. Barbara Spalholz
301-496-7028

Structural Biology and Molecular Applications Branch

Chief

Dr. Jennifer Couch
301-435-5226

Division of Cancer Epidemiology and Genetics

Office of the Director

Director
Dr. Joseph F. Fraumeni, Jr.
301-496-1611

Deputy Director
Dr. Shelia H. Zahm
301-496-8157

Office of Communications and Special Initiatives

Chief
Ms. Catherine B. McClave
301-496-6271

Office of Division Operations and Analysis

Chief
Ms. Marianne K. Henderson
301-496-8672

Office of Education

Chief
Dr. Jackie A. Lavigne
301-451-4435

Epidemiology and Biostatistics Program

Director
Dr. Robert N. Hoover
301-496-3004

Deputy Director
Dr. Patricia Hartge
301-496-7887

Human Genetics Program

Director
Dr. Margaret A. Tucker
301-496-4375

Biostatistics Branch

Chief
Dr. Nilanjan Chatterjee
301-402-7933

Hormonal and Reproductive Epidemiology Branch

Chief
Dr. Louise A. Brinton
301-496-1691

Genetic Epidemiology Branch

Chief
Dr. Margaret A. Tucker
301-496-4375

Clinical Genetics Branch

Chief
Dr. Mark H. Greene
301-594-7642

Nutritional Epidemiology Branch

Chief
Dr. Arthur Schatzkin
301-594-2931

Occupational and Environmental Epidemiology Branch

Chief
Dr. Debra T. Silverman
301-435-4716

NCI Core Genotyping Facility

Director
Dr. Stephen J. Chanock
301-435-7559

Laboratory of Translational Genomics

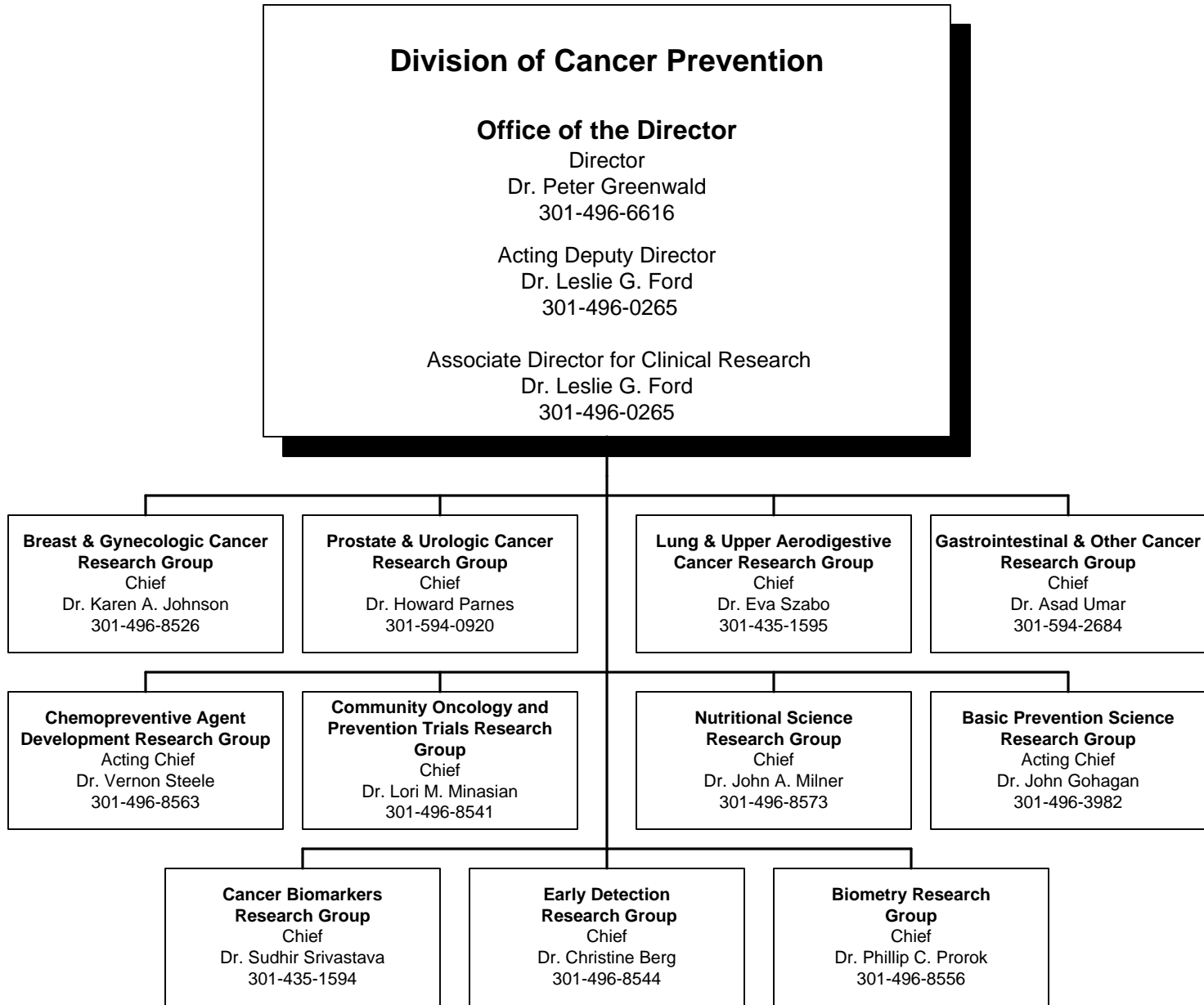
Chief
Dr. Stephen J. Chanock
301-435-7559

Radiation Epidemiology Branch

Chief
Dr. Martha S. Linet
301-496-6600

Infections and Immunoepidemiology Branch

Chief
Dr. Allan Hildesheim
301-435-3984



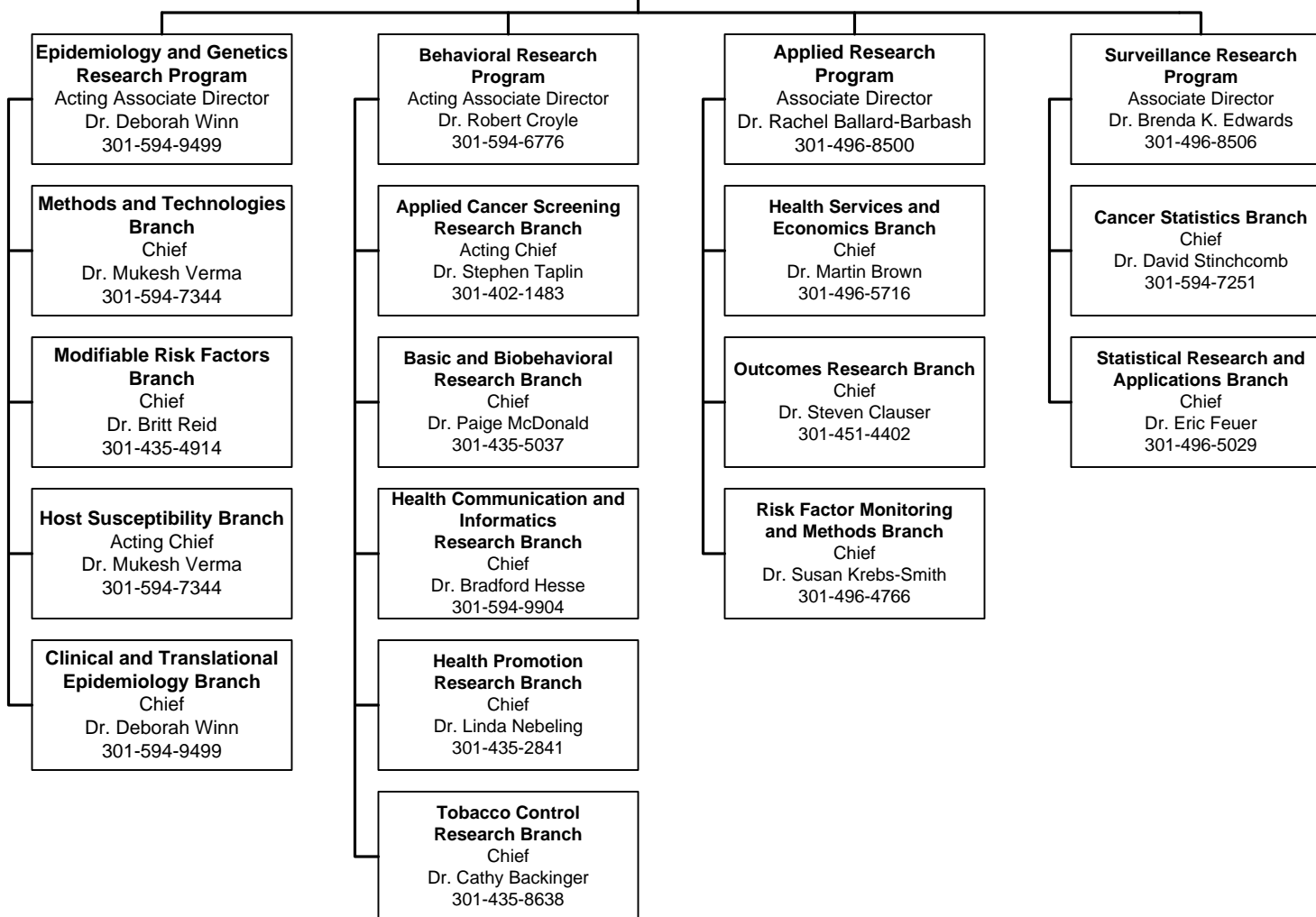
Division of Cancer Control and Population Sciences

Office of the Director

Director
Dr. Robert Croyle
301-594-6776

**Deputy Director for
Research Dissemination and
Diffusion**
Vacant
301-594-6776

**Office of Cancer
Survivorship**
Director
Dr. Julia H. Rowland
301-402-8186



Division of Cancer Treatment and Diagnosis

Office of the Director

Director

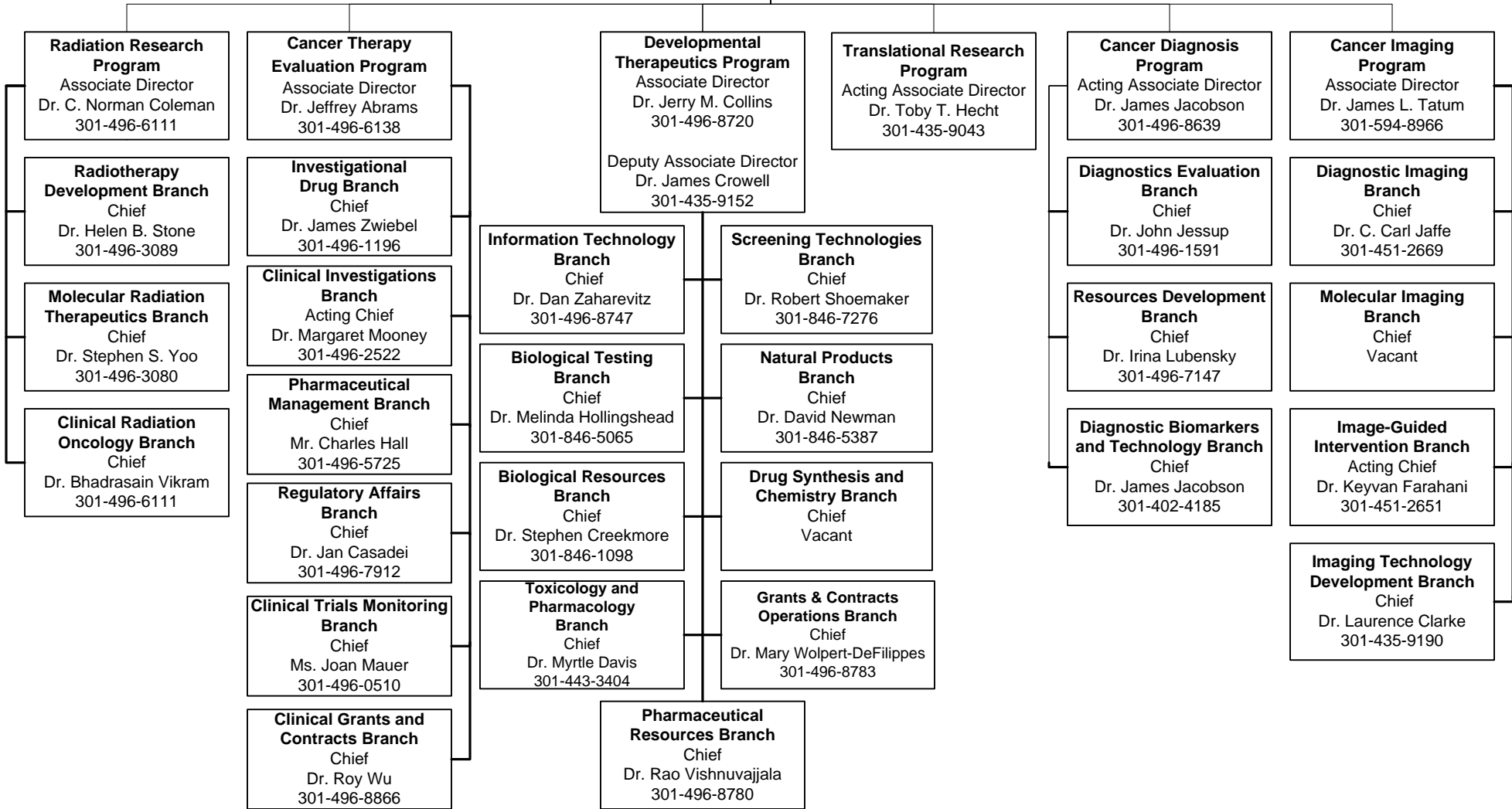
Dr. James H. Doroshow
301-496-4291

Deputy Director

Dr. Joseph Tomaszewski
301-496-6711

Biometrics Research Branch
Chief
Dr. Richard Simon
301-496-0975

Office of Cancer Complementary and Alternative Medicine
Director
Dr. Jeffrey White
301-435-7980



Radiation Research Program
Associate Director
Dr. C. Norman Coleman
301-496-6111

Radiotherapy Development Branch
Chief
Dr. Helen B. Stone
301-496-3089

Molecular Radiation Therapeutics Branch
Chief
Dr. Stephen S. Yoo
301-496-3080

Clinical Radiation Oncology Branch
Chief
Dr. Bhadrasain Vikram
301-496-6111

Cancer Therapy Evaluation Program
Associate Director
Dr. Jeffrey Abrams
301-496-6138

Investigational Drug Branch
Chief
Dr. James Zwiebel
301-496-1196

Clinical Investigations Branch
Acting Chief
Dr. Margaret Mooney
301-496-2522

Pharmaceutical Management Branch
Chief
Mr. Charles Hall
301-496-5725

Regulatory Affairs Branch
Chief
Dr. Jan Casadei
301-496-7912

Clinical Trials Monitoring Branch
Chief
Ms. Joan Mauer
301-496-0510

Clinical Grants and Contracts Branch
Chief
Dr. Roy Wu
301-496-8866

Developmental Therapeutics Program
Associate Director
Dr. Jerry M. Collins
301-496-8720

Deputy Associate Director
Dr. James Crowell
301-435-9152

Information Technology Branch
Chief
Dr. Dan Zaharevitz
301-496-8747

Biological Testing Branch
Chief
Dr. Melinda Hollingshead
301-846-5065

Biological Resources Branch
Chief
Dr. Stephen Creekmore
301-846-1098

Toxicology and Pharmacology Branch
Chief
Dr. Myrtle Davis
301-443-3404

Pharmaceutical Resources Branch
Chief
Dr. Rao Vishnuvajjala
301-496-8780

Developmental Therapeutics Program
Associate Director
Dr. Jerry M. Collins
301-496-8720

Deputy Associate Director
Dr. James Crowell
301-435-9152

Screening Technologies Branch
Chief
Dr. Robert Shoemaker
301-846-7276

Natural Products Branch
Chief
Dr. David Newman
301-846-5387

Drug Synthesis and Chemistry Branch
Chief
Vacant

Grants & Contracts Operations Branch
Chief
Dr. Mary Wolpert-DeFilippes
301-496-8783

Translational Research Program
Acting Associate Director
Dr. Toby T. Hecht
301-435-9043

Cancer Diagnosis Program
Acting Associate Director
Dr. James Jacobson
301-496-8639

Diagnosics Evaluation Branch
Chief
Dr. John Jessup
301-496-1591

Resources Development Branch
Chief
Dr. Irina Lubensky
301-496-7147

Diagnostic Biomarkers and Technology Branch
Chief
Dr. James Jacobson
301-402-4185

Cancer Imaging Program
Associate Director
Dr. James L. Tatum
301-594-8966

Diagnostic Imaging Branch
Chief
Dr. C. Carl Jaffe
301-451-2669

Molecular Imaging Branch
Chief
Vacant

Image-Guided Intervention Branch
Acting Chief
Dr. Keyvan Farahani
301-451-2651

Imaging Technology Development Branch
Chief
Dr. Laurence Clarke
301-435-9190

Division of Extramural Activities

Office of the Director

Director

Dr. Paulette S. Gray
301-496-5147

Acting Deputy Director

Dr. Paulette S. Gray
301-496-5147

Assistant Director

Dr. Cedric W. Long
301-496-9138

Office of Extramural Applications

Associate Director
Mr. Amir Sahar-Khiz
301-594-1331

Applied Information Systems Branch

Chief
Mr. Greg Fischetti
301-594-1067

Research Analysis and Evaluation Branch

Chief
Ms. Marilyn R. Gaston
301-594-1111

Office of Referral, Review and Program Coordination

Associate Director
Dr. David E. Maslow
301-496-2330

Research Programs Review Branch

Chief
Dr. Olivia T. Bartlett
301-594-2501

Program Coordination and Referral Branch

Chief
Dr. Christopher L. Hatch
301-594-1403

Resources and Training Review Branch

Chief
Dr. Robert E. Bird
301-496-7978

Special Review and Logistics Branch

Chief
Dr. Kirt J. Vener
301-496-7174

Links to Cancer Statistics

SOURCES:

2008 Report to the Nation on the Status of Cancer, 1975-2005

Annual Report to the Nation on the Status of Cancer, 1975-2005 provides information related to incidence, death rates, and trends in the United States. Contains a special feature on trends in lung cancer and related cancer control efforts. http://seer.cancer.gov/report_to_nation/index.html

Fast Stats

Interactive tool providing tables, charts, and graphs with information related to incidence, mortality, survival and stage, prevalence, and lifetime risk (probability of developing or dying from cancer).

<http://seer.cancer.gov/faststats/>

SEER Cancer Statistics Review, 1975-2005

Annually updated tables and graphs displaying cancer statistics by cancer site, year of diagnosis, age, race, sex, and geography, diagnosed between 1975 and 2005. Searchable cancer statistics related to incidence, mortality, survival, prevalence, and lifetime risk.

http://seer.cancer.gov/csr/1975_2005/ **Cancer Stat Fact Sheets**

Collection of statistical summaries for a number of common cancer types, with information related to incidence, mortality, survival, stage, prevalence, and lifetime risk.

<http://seer.cancer.gov/statfacts/>

REPORTS:

Costs of Cancer Care, 1963-2004

http://progressreport.cancer.gov/doc_detail.asp?pid=1&did=2005&chid=25&coid=226&mid=

Relationship of Cancer to the Leading Causes of Death in the United States, 1975 and 2005

http://seer.cancer.gov/csr/1975_2005/results_merged/topic_lead_cod.pdf

Estimated New Cancer Cases and Deaths for 2008

http://seer.cancer.gov/csr/1975_2005/results_single/sect_01_table.01.pdf

Person-Years of Life Lost Due to Cancer and Average Years of Life Lost Per Person Dying of Cancer, All Races, Both Sexes, 2005

http://seer.cancer.gov/csr/1975_2005/results_merged/topic_year_lost.pdf

Incidence, Mortality, and Five-Year Relative Survival Rates by Cancer Site

http://seer.cancer.gov/csr/1975_2005/results_single/sect_01_table.04_2pgs.pdf

Annual Percent Change in Incidence and Mortality Rates, 1996-2005

http://seer.cancer.gov/csr/1975_2005/results_merged/topic_graph_trends.pdf

SEER Age-Adjusted Incidence Rate and Annual Percent Change by Race and Sex, 1996-2005

http://seer.cancer.gov/csr/1975_2005/results_merged/topic_inc_trends.pdf

SEER Age-Adjusted Mortality Rate and Annual Percent Change by Race and Sex, 1996-2005

http://seer.cancer.gov/csr/1975_2005/results_merged/topic_mor_trends.pdf

Prevalence of Cancer: Estimated Number of Persons Diagnosed with Cancer, 5- and 30-Year Limited Duration

http://seer.cancer.gov/csr/1975_2005/results_merged/topic_prevalence.pdf

Fiscal Year 2008 Budget

(Dollars in Thousands)

A. Actual Obligations Resulting From Appropriated Funds:

FY 2007 Appropriation	\$4,805,088
Supplemental Appropriations	\$25,559
NIH Transfer for NIH Genes and Environmental Initiative	-3,091
Lapse	-4
Actual Obligations Subtotal	4,827,552

B. Reimbursable Obligations:

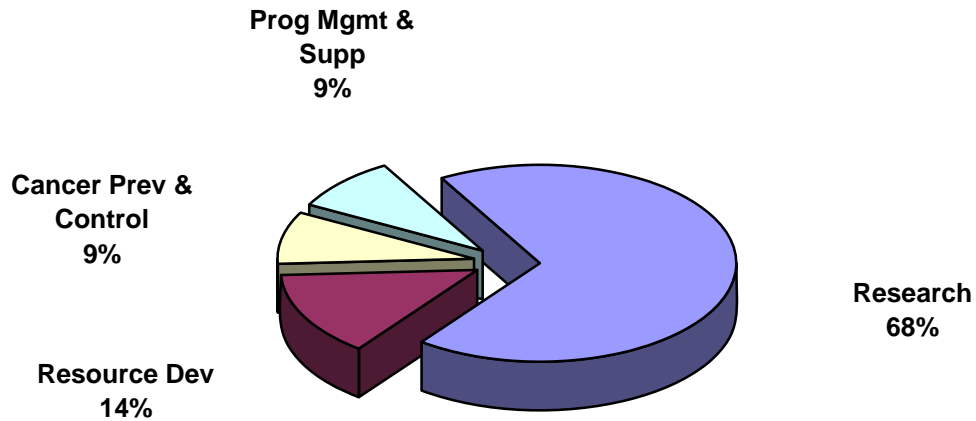
Reimbursements	16,054
-----------------------	---------------

C. Total NCI Obligations: \$4,843,606 *

*EXCLUDES projects awarded with Stamp Out Breast Cancer funds.

Program Structure Fiscal Year 2008

(Dollars in Thousands)

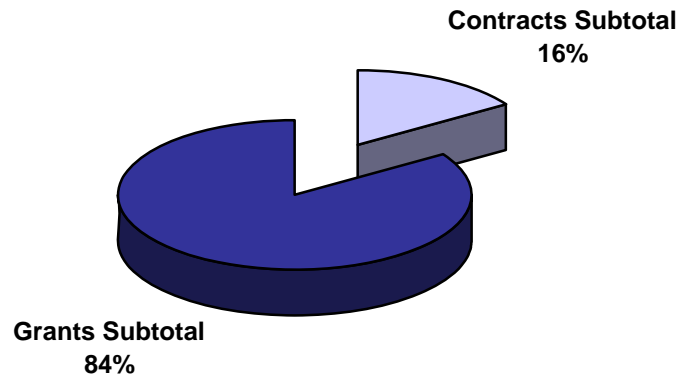


Budget Activity	Amount	Percent
Research:		
Cancer Causation	\$1,041,893	21.6%
Detection and Diagnosis Research	382,826	7.9%
Treatment Research	1,120,379	23.2%
Cancer Biology	765,530	15.9%
Subtotal Research	3,310,628	68.6%
Resource Development:		
Cancer Centers Support	478,151	9.9%
Research Manpower Development	180,581	3.7%
Buildings and Facilities	7,920	0.2%
Subtotal Resource Development	666,652	13.8%
Cancer Prevention and Control	424,027	8.8%
Program Management and Support	426,245	8.8%
*Total NCI	4,827,552	100.0%

*EXCLUDES projects awarded with Stamp Out Breast Cancer funds.

Extramural Funds Fiscal Year 2008

(Dollars in Thousands)



Mechanism	Amount	Percent
Contracts:		
R&D Contracts	444,186	11.9%
Cancer Control Contracts	134,777	3.6%
Buildings and Facilities	7,920	0.2%
Construction Contracts	0	0.0%
Subtotal Contracts	586,883	15.7%
Grants:		
Research Project Grants	2,089,859	56.0%
Cancer Centers/Specialized Centers/SPORES	477,034	12.8%
NRSA	69,901	1.9%
Other Research Grants	317,775	8.5%
Cancer Control Grants	190,442	5.1%
Construction Grants	0	0.0%
Subtotal Grants	3,145,011	84.3%
Total Extramural Funds	3,731,894	100.0%
Total Intramural/RMS/Control Inhouse	1,095,658	
*Total NCI	\$4,827,552	

*EXCLUDES projects awarded with Stamp Out Breast Cancer funds.

NCI Obligations by Mechanism, Fiscal Year 2008

(Dollars in Thousands)

		Number	Amount	% of Total
Research Project Grants	Non-Competing	3,802	1,517,375	31.4%
	Administrative Supplements	(227)	19,697	0.4%
	Competing	1,266	455,348	9.4%
	Subtotal, without SBIR/STTR Grants	5,068	1,992,420	41.3%
	SBIR/STTR Grants	312	97,439	2.0%
	Subtotal, Research Project Grants	5,380	2,089,859	43.3%
Centers & SPOREs	Cancer Centers Grants-P20/P30	64	274,470	5.7%
	SPOREs-P50	60	123,293	2.6%
	Other Specialized Centers	44	79,271	1.6%
	Subtotal, Centers	168	477,034	9.9%
Other Research	Career Program			0.0%
	Temin & Minority Mentored Awards-K01	102	14,631	0.3%
	Estab. Inv. Award-K05	20	2,813	0.1%
	Preventive Oncology-K07	104	13,775	0.3%
	Clinical Investigator-K08	95	12,715	0.3%
	Clinical Oncology-K12	16	9,572	0.2%
	Transitional Career Development-K22	47	7,284	0.2%
	Mentored Patient Oriented RCDA-K23	48	6,453	0.1%
	Mid-Career Invest. & Patient Orient. Res-K24	20	3,251	0.1%
	Mentored Quant. Res Career-K25	21	2,881	0.1%
	Inst. Curr. Award-K30	0	0	0.0%
	Pathway to Independence Awards-K99	52	6,153	0.1%
	Subtotal, Career Program	525	79,528	1.7%
	Cancer Education Program-R25	82	30,089	0.6%
	Clinical Cooperative Groups-U10	61	143,975	3.0%
	Minority Biomedical Support-S06	0	1,360	0.0%
	Res Enhancement (SC1) & Pilot Need to Research	4	885	0.0%
	Continuing Education	7	722	0.0%
	Resource Grants-R24/U24	48	52,814	1.1%
	Explor Coop Agreement-U56	6	5,294	0.1%
Conference Grants-R13	93	3,108	0.1%	
Subtotal, Other Research Grants	826	317,775	6.6%	
Subtotal, Research Grants		6,374	2,884,668	59.8%
NRSA Fellowships	<i>Trainees:</i>	1,509	69,901	1.5%
R&D Contracts	R&D Contracts	289	436,428	9.0%
	SBIR Contracts	38	7,757	0.2%
	Subtotal, Contracts	327	444,185	9.2%
Intramural Research	Program		600,330	12.4%
	NIH Management Fund/SSF Assessment		118,042	2.5%
	Subtotal, Intramural Research	<i>FTEs:</i>	1,841	718,372
RMS	Research Mgmt and Support		210,355	4.4%
	NIH Management Fund/SSF Assessment		20,636	0.4%
	Subtotal, RMS	<i>FTEs:</i>	707	230,991
Cancer Prevention and Control	Cancer Control Grants	201	190,442	3.9%
	Cancer Control Contracts	133	134,776	2.8%
	Inhouse	334	131,444	2.7%
	NIH Management Fund/SSF Assessment		14,853	0.3%
	Subtotal, Prevention and Control	<i>FTEs:</i>	334	471,515
Buildings and Facilities			7,920	0.2%
Construction			0	0.0%
*Total NCI	<i>FTEs:</i>	2,882	4,827,552	100.0%

*EXCLUDES projects awarded with Stamp Out Breast Cancer funds.

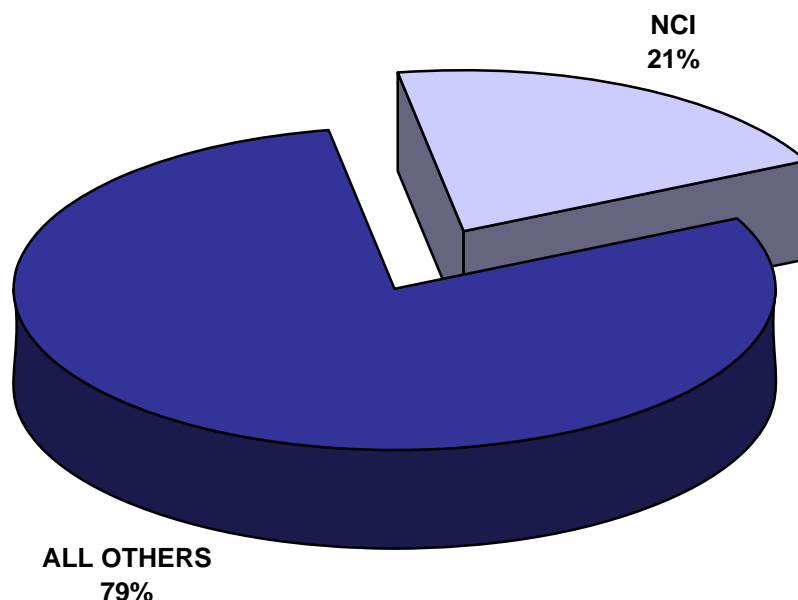
Division Obligations by Mechanism, Fiscal Year 2008

(Dollars in Thousands)

CCR	DCEG	DCTD	DCB	DCCPS	DCP	DEA	OD	Research Grants	Program Support
								1,448,993	68,382
								19,697	
								455,348	
								1,924,038	68,382
								97,439	
								2,021,477	68,382
		948					273,522		
		123,031					262		
			21,110	8,968			49,193		
		123,979	21,110	8,968			322,977		
							14,631		
							2,813		
							13,775		
							12,715		
							9,572		
							7,284		
							6,453		
							3,251		
							2,881		
							6,153		
							79,528		
							30,089		
		143,032					943		
								1,360	
								885	
								722	
								52,814	
							201	5,294	
								3,108	
							31,233	64,183	
		267,959	21,110	8,968			433,738	2,085,660	68,382
								69,901	
	5,150	122,225		32,799			214,357		61,898
							7,757		
	5,150	122,225		32,799			222,114		61,898
371,248	59,071						134,099		35,912
									118,042
371,248	59,071						134,099		153,954
		37,686	12,483			19,735	115,527		24,924
									20,636
		37,686	12,483			19,735	115,527		45,560
		21,351		26,388	113,362		29,341		
	5,654	6,724		36,602	69,129		16,667		
	5,713	6,955		28,936	17,155		68,757		3,928
									14,853
FTEs:	11,367	35,030		91,926	199,646		114,765		18,781
							7,920		
371,248	75,588	462,900	33,593	133,693	199,646	19,735	1,098,064	2,085,660	348,575

NIH Management Fund, Service & Supply Fund, and GSA Rent Fiscal Year 2008

(Dollars in Thousands)



DISTRIBUTION OF NCI PAYMENT	Amount	Share of NCI
Clinical Center	\$94,424	48.1%
Center for Scientific Review	8,910	4.5%
Center for Information Technology	5,036	2.6%
Service and Supply Fund	55,897	28.5%
Other Research Services	12,810	6.5%
Other OD	19,381	9.9%
*Total Management Fund and SSF	196,458	100.0%
Other NIH Institutes Management Fund and SSF	758,826	
Total NIH Management Fund and SSF	\$955,284	

*Excludes GSA Rental Payments for Space which totaled \$54,802 in FY 2008

The Management Fund provides for the financing of certain common research and administrative support activities which are required in the operations of NIH:

Clinical Center: Admissions and follow-up, anesthesiology, diagnostic x-ray, nuclear medicine, clinical pathology, blood bank, rehabilitation medicine, pharmacy, medical records, nursing services, patient nutrition service, housekeeping services, laundry, and social work

Center for Scientific Review: Initial scientific review of applications, assignment of research grant applications to institutes

Center for Information Technology: Research and development program in which concepts and methods of computer science are applied to biomedical problems

GSA Rental Payments for Space: All building rental, including utilities and guard services.

Other Research Services: Procurement, safety, engineering, biomedical engineering, veterinary resources, and library

Service & Supply Fund: Mainframe computing, enterprise IT software planning and development, engineering planning and design, printing, telecommunications, procurement, shipping and receiving, motor pool, research animals, fabrication and maintenance of scientific equipment, utilities and plant

Special Sources of Funds

CRADAs

As a result of the Federal Technology Transfer Act of 1986 (PL 99-502), government laboratories are authorized to enter into Cooperative Research and Development Agreements (CRADAs) with private sector entities. Licensing agreements are usually incorporated into the CRADA document which addresses patent rights attributable to research supported under the CRADA.

NCI CRADA Receipts Deposited to the U.S. Treasury
(Dollars in Thousands)

Fiscal Year	Carryover from Prior Year	Collections	Obligations
1997	4,486	13,378	6,639
1998	11,217	5,351	7,266
1999	9,302	3,645	4,707
2000	8,240	2,717	4,618
2001	6,339	5,295	2,770
2002	8,864	5,048	2,380
2003	11,533	5,221	5,361
2004	11,351	5,080	5,469
2005	10,962	6,858	4,253
2006	13,567	6,142	7,125
2007	12,584	9,410	8,360
2008	13,634	6,699	7,192

Royalty Income

NCI retains a portion of the royalty income generated by the patents related to NCI-funded research. A major portion of this royalty income is used to reward employees of the laboratory, further scientific exchange and for education and training in accordance with the terms of the Federal Technology Transfer Act (PL 99-502). Receipts are also used to support costs associated with processing and collecting royalty income and for technology transfer efforts in NCI and NIH.

NCI Royalty Income Funding History
(Dollars in Thousands)

Years	Collections*	Inventor Payments	Other
1997/1998	9,814	2,321	7,493
1998/1999	22,716	5,084	17,632
1999/2000	21,160	4,695	16,465
2000/2001	37,040	4,811	32,229
2001/2003	27,443	6,210	21,233
2002/2004	42,565	3,961	38,604
2003/2005	27,271	5,262	22,009
2004/2006	26,923	4,950	21,973
2005/2007	34,086	5,745	28,341
**2006/2008	29,811	6,853	22,958
**2007/2009	36,344	7,209	29,135
**2008/2010	37,810	5,023	32,787

*Does not include assessments by NIH.

**2007/2009 and 2008/2010 collections and payments are estimates.

Stamp Out Breast Cancer

The Stamp Out Breast Cancer Act (PL 105-41) was established in August 1997, extended in July 2000 (PL 106-253) and November 2005 (PL 109-100) and again in December 2007 (PL 110-150). This act allows postal customers to contribute to funding for breast cancer research through their voluntary purchases of special rate postage stamps from the U.S. Postal Service. The Act required the USPS to transfer 70% to NIH and 30% to the DOD of the funds collected above the postage costs and administrative costs. As of October 2008, NCI has received \$43,093,396. NCI has used these funds for research projects directed towards breast cancer research. Thus far, four major programs have been funded -- the "Insight Awards to Stamp Out Breast Cancer," the "Breast Cancer Research Stamp Exception Program," the "Breast Cancer Premalignancy Program" and a clinical trial to determine the risk of breast cancer recurrence. In FY 2008, \$2.121 million was obligated on Breast Cancer Stamp Fund programs.

Funding for Various Research Areas

(Dollars in Millions)

The National Cancer Institute reports how appropriated funds are spent in a number of different categories or classifications including specific cancer sites, cancer types, diseases related to cancer, as well as types of research mechanisms. The table below represents funding levels for frequently requested research areas. These research areas do not represent the entire NCI research portfolio. Funding for these areas can overlap and do not add to the total NCI budget. For example, dollars for a clinical trial on breast cancer research would be included in both the Breast Cancer and the Clinical Trials lines in the table below. Similarly, a basic cancer research project may be relevant to cervical, uterine and ovarian cancers and relevant funding would be included in the figures for all three sites.

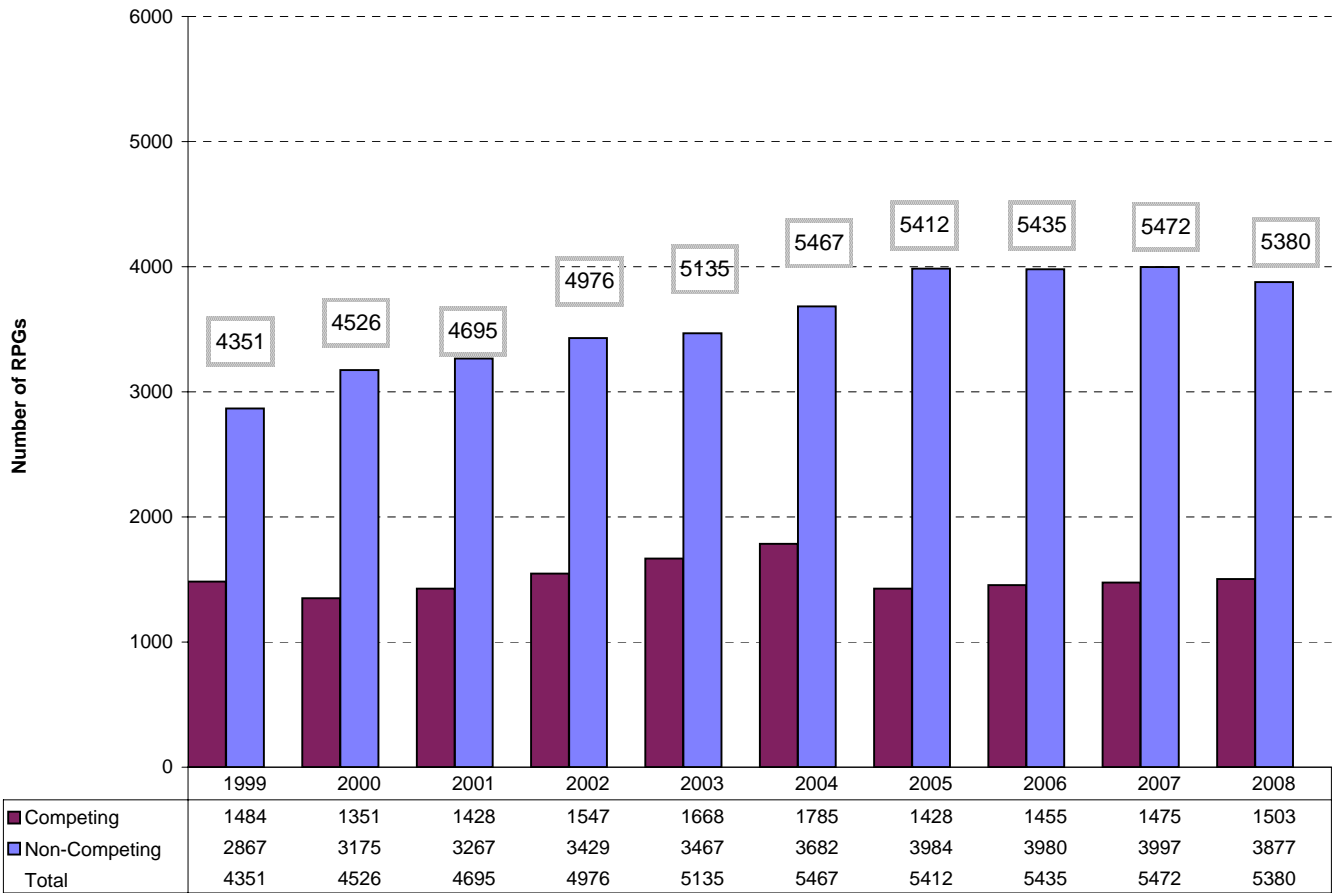
Disease Area	2004 Actual	2005 Actual	2006 Actual	2007 Actual	2008 Actual
Total NCI Budget	\$4,723.9	\$4,794.7	\$4,747.2	\$4,792.6	\$4,827.6
AIDS	267.0	265.9	253.7	253.7	258.5
Brain & CNS	132.3	124.9	130.3	148.2	153.7
Breast Cancer	566.2	560.1	584.7	572.4	572.6
Cervical Cancer	79.0	81.7	83.3	82.4	76.8
Clinical Trials	800.0	781.8	822.3	843.7	853.2
Colorectal Cancer	262.0	253.1	244.1	258.4	273.7
Head and Neck Cancers	88.2	89.5	71.3	66.2	76.1
Hodgkins Disease	17.4	17.2	20.9	16.5	17.5
Leukemia	214.7	220.6	223.5	205.5	216.4
Liver Cancer	63.0	60.5	62.7	67.7	74.2
Lung Cancer	276.5	266.1	242.9	226.9	247.6
Melanoma	94.9	102.9	108.0	97.7	110.8
Multiple Myeloma	23.9	28.2	30.3	32.3	41.5
Non Hodgkin's Lymphoma	99.6	107.0	114.1	113.0	122.6
Ovarian Cancer	99.5	97.7	95.1	96.9	100.0
Pancreatic Cancer	52.7	66.7	74.2	73.3	87.3
Prostate Cancer	308.5	309.0	293.2	296.1	285.4
Stomach Cancer	11.6	11.0	11.5	12.0	12.4
Uterine Cancer	27.0	31.1	19.4	16.6	17.1

Note: These figures were created using NCI's coding methodology. More information about this methodology, as well as project listings for these categories and others, are available online through NCI's Funded Research Portfolio website.

<http://fundedresearch.cancer.gov/>

Research Project Grants Number of Awards Fiscal Years 1999-2008

Includes Small Business Innovation Research and Small Business Technology Transfer Awards



*EXCLUDES projects awarded with Stamp Out Breast Cancer Funds.

RPGs Requested and Awarded Fiscal Years 1999-2008

(Dollars in Thousands)

Fiscal Year	Type	Requested		Awarded		Success	
1999	Competing	New	3905	\$1,091,110	1088	\$237,187	31.8%
		Renewal	757	340,075	390	145,623	
		Supplement	12	3,882	6	2,353	
		Subtotal	4674	1,435,067	1484	385,163	
	Non-Competing				2867	976,610	
	Total			4351	1,361,773		
2000	Competing	New	4116	\$1,253,002	957	\$251,628	27.2%
		Renewal	839	435,207	392	175,908	
		Supplement	11	2,379	2	231	
		Subtotal	4966	1,690,588	1351	427,767	
	Non-Competing				3175	1,100,234	
	Total			4526	1,528,001		
2001	Competing	New	4342	\$1,374,538	1050	\$290,707	27.3%
		Renewal	856	437,455	372	173,722	
		Supplement	29	11,108	6	1,214	
		Subtotal	5227	1,823,101	1428	465,643	
	Non-Competing				3267	1,213,098	
	Total			4695	1,678,741		
2002	Competing	New	4539	\$1,407,475	1142	\$302,217	28.4%
		Renewal	861	404,789	384	186,087	
		Supplement	42	8,512	21	3,499	
		Subtotal	5442	1,820,776	1547	491,803	
	Non-Competing				3429	1,356,138	
	Total			4976	1,847,941		
2003	Competing	New	5323	\$1,675,039	1222	\$347,446	26.5%
		Renewal	955	447,122	441	194,084	
		Supplement	20	4,671	5	1,338	
		Subtotal	6298	2,126,832	1668	542,868	
	Non-Competing				3467	1,457,144	
	Total			5135	2,000,012		
2004	Competing	New	6,558	\$2,045,451	1,333	\$339,925	23.6%
		Renewal	988	518,201	445	210,790	
		Supplement	24	8,337	7	2,196	
		Subtotal	7,570	2,571,989	1,785	552,911	
	Non-Competing				3,682	1,549,727	
	Total			5,467	2,102,638		
2005	Competing	New	6,357	\$2,239,503	1,086	\$309,507	19.2%
		Renewal	1,050	473,898	335	162,857	
		Supplement	22	6,147	7	1,185	
		Subtotal	7,429	2,719,548	1,428	473,549	
	Non-Competing				3,984	1,656,614	
	Total			5,412	2,130,164		
2006	Competing	New	6,585	\$2,215,548	1,105	\$293,912	19.2%
		Renewal	984	542,799	348	170,110	
		Supplement	13	4,098	2	681	
		Subtotal	7,582	2,762,445	1,455	464,703	
	Non-Competing				3,980	1,633,442	
	Total			5,435	2,098,145		
2007	Competing	New	6,428	\$2,116,286	1,178	\$306,431	20.2%
		Renewal	864	482,655	295	163,225	
		Supplement	12	3,513	2	609	
		Subtotal	7,304	2,602,454	1,475	470,265	
	Non-Competing				3,997	1,582,828	
	Total			5,472	2,053,093		
2008	Competing	New	5,944	\$1,991,089	1,150	\$324,070	21.7%
		Renewal	966	515,784	352	187,458	
		Supplement	1	408	1	338	
		Subtotal	6,911	2,507,281	1,503	511,866	
	Non-Competing				3,877	1,509,611	
	Total			5,380	2,021,477		

Includes Small Business Innovation Research and Small Business Technology Transfer Awards.

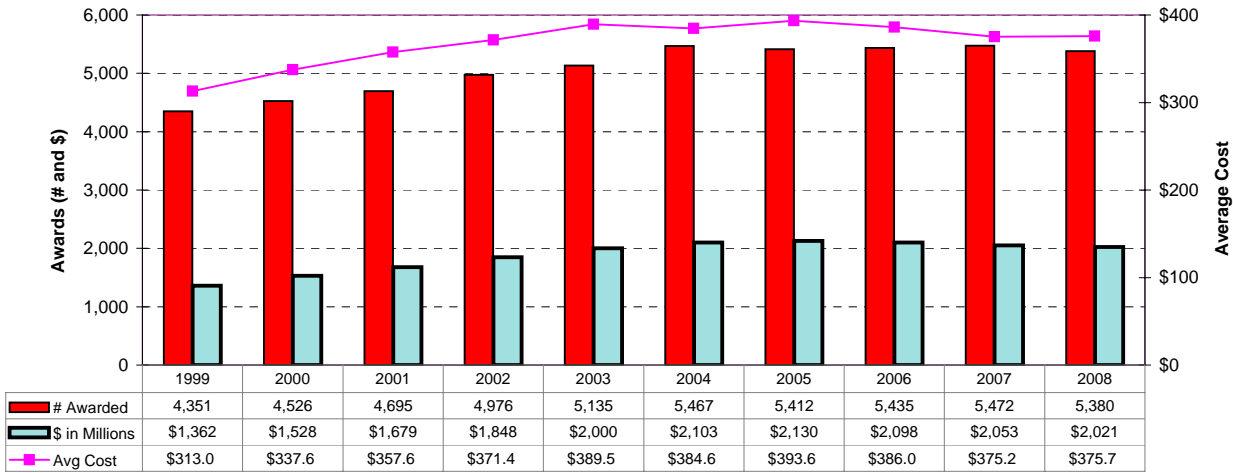
Success rate is the number of awarded grants divided by the number of awards requested.

Totals exclude Assessments for Program Evaluation and projects awarded with Stamp Out Breast Cancer Funds.

**RPG Awards by Activity Codes
Fiscal Years 1998-2007**

(Dollars in Thousands; Activity Code Descriptions on next page)

		R01	DP1	P01	R00	R35	R37	R29	RFA	U01	U19	R03	R21	R33	R15	R55	R56	SBIR/S TTR	TOTAL
1999	#	2,796		169		38	71	413	261	31		108	159	6	2	6		291	4,351
	\$	775,961		249,583		38,585	27,377	45,361	112,868	21,319		7,355	22,548	2,079	200	620		57,917	1,361,773
2000	#	3,011		179		21	60	314	269	18		100	223	20		5		306	4,526
	\$	898,764		286,234		19,413	24,688	34,769	132,872	13,617		7,034	32,897	10,074	99	450		67,090	1,528,001
2001	#	3,231		178		1	61	210	260	18		122	231	49	3	3		328	4,695
	\$	1,008,199		301,115		2,186	26,682	23,738	150,224	14,873		9,024	42,326	23,883	358	300		75,833	1,678,741
2002	#	3,376		173			65	112	267	17		186	308	79	10	9		374	4,976
	\$	1,093,908		317,632			29,445	12,471	177,195	17,531		14,115	57,633	39,317	1,477	850		86,367	1,847,941
2003	#	3,573		178			70	14	252	27		203	360	81	21			356	5,135
	\$	1,207,387		336,607			35,360	1,584	173,342	31,126		15,207	67,742	37,714	3,086			90,857	2,000,012
2004	#	3,780		177			73	0	233	26		240	425	96	20			397	5,467
	\$	1,277,185		344,489			37,888	53	168,539	31,377		18,067	77,970	42,931	4,560			99,579	2,102,638
2005	#	3,848		176			74		254	30	1	223	430	88	20	2	1	265	5,412
	\$	1,312,762		338,660			40,007		171,403	34,100	1,049	16,894	76,566	36,250	4,091	200	407	97,775	2,130,164
2006	#	3,909		173			76		273	26	3	218	405	73	14		2	263	5,435
	\$	1,293,880		339,616			40,067		173,304	31,292	4,365	16,558	70,650	28,726	2,983		649	96,055	2,098,145
2007	#	3,849		172			73		285	22	3	284	437	48	19		2	278	5,472
	\$	1,266,622		326,968			38,232		177,423	24,295	4,212	21,640	78,748	16,739	4,042		495	93,677	2,053,093
2008	#	3,732	2	158	2		70		294	25	3	256	466	36	22		2	312	5,380
	\$	1,250,346	1,651	305,250	497		36,287		174,254	20,872	4,366	19,597	92,120	13,770	4,725		302	97,439	2,021,476



*EXCLUDES projects awarded with the Stamp Out Breast Cancer Funds and Program Evaluation.

Activity Code Descriptions

R01	Research Project (Traditional) - discrete, specified, circumscribed project to be performed by the named investigator(s) in an area representing his/her specified interest and competencies.
DP1	NIH Director's Pioneer Award (NDPA) - Support for individuals who have the potential to make extraordinary contributions to medical research. Not renewable
P01	Research Program Projects - broadly based, multidisciplinary, often long-term, research program which has a specific major objective or a basic theme. A program project is directed toward a range of problems having a central research focus in contrast to the usually narrower thrust of the traditional research project.
R00	Research Transition Award - To support the second phase of a Career/Research Transit award program that provides 1-3 years of independent research support (R00) contingent on securing an independent research position. Award recipients will be expected to contract successfully for independent R01 support from the NIH during the R00 research transition award period.
R35	Outstanding Investigator Grants - long-term support to an experienced investigator with an outstanding record of research productivity. This support is intended to encourage investigators to embark on long-term projects of unusual potential in a categorical program area.
R37	Methods to Extend Research in Time (MERIT) Award - long-term grant support to investigators whose research competence and productivity are distinctly superior and who are highly likely to continue to perform in an outstanding manner. Investigators may not apply for a MERIT award. Program staff and/or members of the cognizant National Advisory Council/Board will identify candidates for the MERIT award during the course of review of competing research grant applications prepared and submitted in accordance with regular PHS requirements.
R29	First Independent Research Support and Transition (FIRST) Award - sufficient initial period of research support for newly independent biomedical investigators to develop their research capabilities and demonstrate the merit of their research ideas.
RFA	Request for Applications - A formal statement inviting grant or cooperative agreement applications in a well-defined scientific area to accomplish specific program purposes and indicates the amount of funds set aside for the competition and/or the estimated number of awards to be made.
U01	Research Project Cooperative Agreement - discrete, specified, circumscribed project to be performed by the named investigator(s) in an area representing his/her specific interest and competencies.
U19	Research Program Cooperative Agreements - support research programs that have multiple projects directed towards specific major objective, basic theme, or program goal, requiring a broad-based, multidisciplinary, and often long term, approach.
R03	Small Grants - research support specifically limited in time and amount for studies in categorical program areas. Small grants provide flexibility for initiating studies, which are generally for preliminary short-term projects and are non-renewable.
R21	Exploratory/Developmental Grants - Phase I development of new research activities in categorical program areas. Support generally is restricted in level of support and in time.
R33	Exploratory/Developmental Grants - Phase II development of new research activities in categorical program areas. Support generally is restricted in level of support and in time.
R15	Academic Research Enhancement Award (AREA) - to domestic health professional schools and other institutions offering baccalaureate or advanced degrees in health sciences, except those that have received NIH research grants and/or cooperative agreements. Supports feasibility studies and other small-scale research projects.
R55	Shannon Awards - limited support to scientists whose research applications fall short of the cutoff for funding yet are at the "margin of excellence" whereby the perceived quality of the grant is statistically indistinguishable from grants that are funded.
R56	High-Priority, Short-Term Project Award - provide limited, non-renewable interim support to enable an applicant to gather additional data for revision of a new or competing renewal application.
R41	Small Business Technology Transfer (STTR) Grants - Phase I - limited support to projects conducted jointly by a small business concern and a research institution in which not less than 40% of the work is performed by the small business.
R42	Small Business Technology Transfer (STTR) Grants - Phase II - limited support to projects conducted jointly by a small business concern and a research institution in which not less than 40% of the work is performed by the small business.
R43	Small Business Innovation Research (SBIR) Grants - Phase I - projects limited in time and amount, to establish the technical merit and feasibility of R&D ideas which may ultimately lead to commercial products or services.
R44	Small Business Innovation Research (SBIR) Grants - Phase II - in-depth development of R&D ideas whose feasibility has been established in Phase I and which are likely to result in commercial products or services.
U43	Small Business Innovation Research (SBIR) Cooperative Agreement - Phase I - utilized when an assistance relationship will exist between the institute and a recipient and in which substantial programmatic involvement is anticipated between the institute and the recipient during performance of the contemplated activity. Supports projects limited in time and amount to establish the technical merit and feasibility of R&D ideas which may ultimately lead to commercial products or services.
U44	Small Business Innovation Research (SBIR) Cooperative Agreement - Phase II - utilized when an assistance relationship will exist between the institute and a recipient and in which substantial programmatic involvement is anticipated between the institute and the recipient during performance of the contemplated activity. Supports in-depth development of R&D ideas whose feasibility has been established in Phase I and which are likely to result in commercial products or services.

Cancer Centers by State (P30 Core Grants), Fiscal Year 2008

(Dollars in Thousands)

State	Grantee Institution	Code	Amount
Alabama	University of Alabama at Birmingham	Comprehensive	\$6,023
Arizona	University of Arizona	Clinical	4,064
California	Burnham Institute for Medical Research	Basic	3,649
	City of Hope/Beckman Research Institute	Comprehensive	2,450
	Salk Institute for Biological Studies	Basic	3,091
	Stanford University	Clinical	1,654
	University of California Davis	Clinical	2,893
	University of California Irvine	Comprehensive	2,692
	University of California Los Angeles	Comprehensive	4,701
	University of California San Diego	Comprehensive	4,346
	University of California San Francisco	Comprehensive	7,981
	University of Southern California	Comprehensive	6,733
Colorado	University of Colorado Denver	Comprehensive	4,419
Connecticut	Yale University	Comprehensive	1,890
Dist of Col	Georgetown University	Comprehensive	3,154
Florida	H. Lee Moffitt Cancer Center & Research Institute	Comprehensive	2,974
Hawaii	University of Hawaii at Manoa	Clinical	1,515
Illinois	Northwestern University	Comprehensive	5,217
	University of Chicago	Clinical	4,345
Indiana	Indiana Univ-Purdue Univ at Indianapolis	Clinical	1,351
	Purdue University West Lafayette	Basic	1,165
Iowa	University of Iowa	Comprehensive	2,293
Maine	Jackson Laboratory	Basic	2,351
Maryland	Johns Hopkins University	Comprehensive	7,421
	University of Maryland Baltimore	Clinical	1,464
Massachusetts	Dana-Farber Cancer Institute	Comprehensive	11,835
	Massachusetts Institute of Technology	Basic	2,844
Michigan	University of Michigan at Ann Arbor	Comprehensive	6,056
	Wayne State University	Comprehensive	2,531
Minnesota	Mayo Clinic Rochester	Comprehensive	5,383
	University of Minnesota Twin Cities	Comprehensive	2,331
Missouri	Washington University	Comprehensive	4,106
Nebraska	University of Nebraska Medical Center	Clinical	1,635
New Hampshire	Dartmouth College	Comprehensive	3,196
New Jersey	Robert Wood Johnson Medical School	Comprehensive	3,292
New Mexico	University of New Mexico	Clinical	1,393
New York	Cold Spring Harbor Laboratory	Basic	4,127
	Columbia University Health Sciences	Comprehensive	3,785
	New York University School of Medicine	Clinical	2,640
	Roswell Park Cancer Institute Corp	Comprehensive	4,286
	Sloan-Kettering Institute for Cancer Res	Comprehensive	14,024
	Yeshiva University	Clinical	4,176
North Carolina	Duke University	Comprehensive	7,033
	University of North Carolina Chapel Hill	Comprehensive	6,796
	Wake Forest University Health Sciences	Comprehensive	1,494
Ohio	Case Western Reserve University	Comprehensive	5,411
	Ohio State University	Clinical	3,843
Oregon	Oregon Health and Science University	Clinical	1,215
Pennsylvania	Fox Chase Cancer Center	Comprehensive	8,200
	Thomas Jefferson University	Clinical	3,179
	University of Pennsylvania	Clinical	7,577
	University of Pittsburgh at Pittsburgh	Comprehensive	5,022
	Wistar Institute	Basic	2,405
Tennessee	St. Jude Children's Research Hospital	Clinical	5,988
	Vanderbilt University	Comprehensive	5,469
Texas	Baylor College of Medicine	Clinical	1,632
	University of Texas M.D. Anderson Cancer Center	Comprehensive	10,667
	University of Texas San Antonio Health Science Center	Clinical	0
Utah	University of Utah	Clinical	0
Vermont	University of Vermont & St. Agric College	Comprehensive	0
Virginia	University of Virginia Charlottesville	Clinical	2,508
	Virginia Commonwealth University	Clinical	680
Washington	Fred Hutchinson Cancer Research Center	Comprehensive	9,980
Wisconsin	University of Wisconsin Madison	Comprehensive	4,855
	Total P30s	64	261,428
	Planning Grants (P20s)		3,645
	Other P20, P30 & U41		9,396
Total Cancer Centers			274,470

Specialized Programs of Research Excellence, Fiscal Year 2008

(Dollars in Thousands)

In 1992, the NCI established the Specialized Programs of Research Excellence (SPORE). This program promotes interdisciplinary research and speeds the bidirectional exchange between basic and clinical science to move basic research findings from the laboratory to applied settings involving patients and populations. The goal of the SPORE program is to bring to clinical care settings novel ideas that have the potential to reduce cancer incidence and mortality, and to improve survival, and the quality of life.

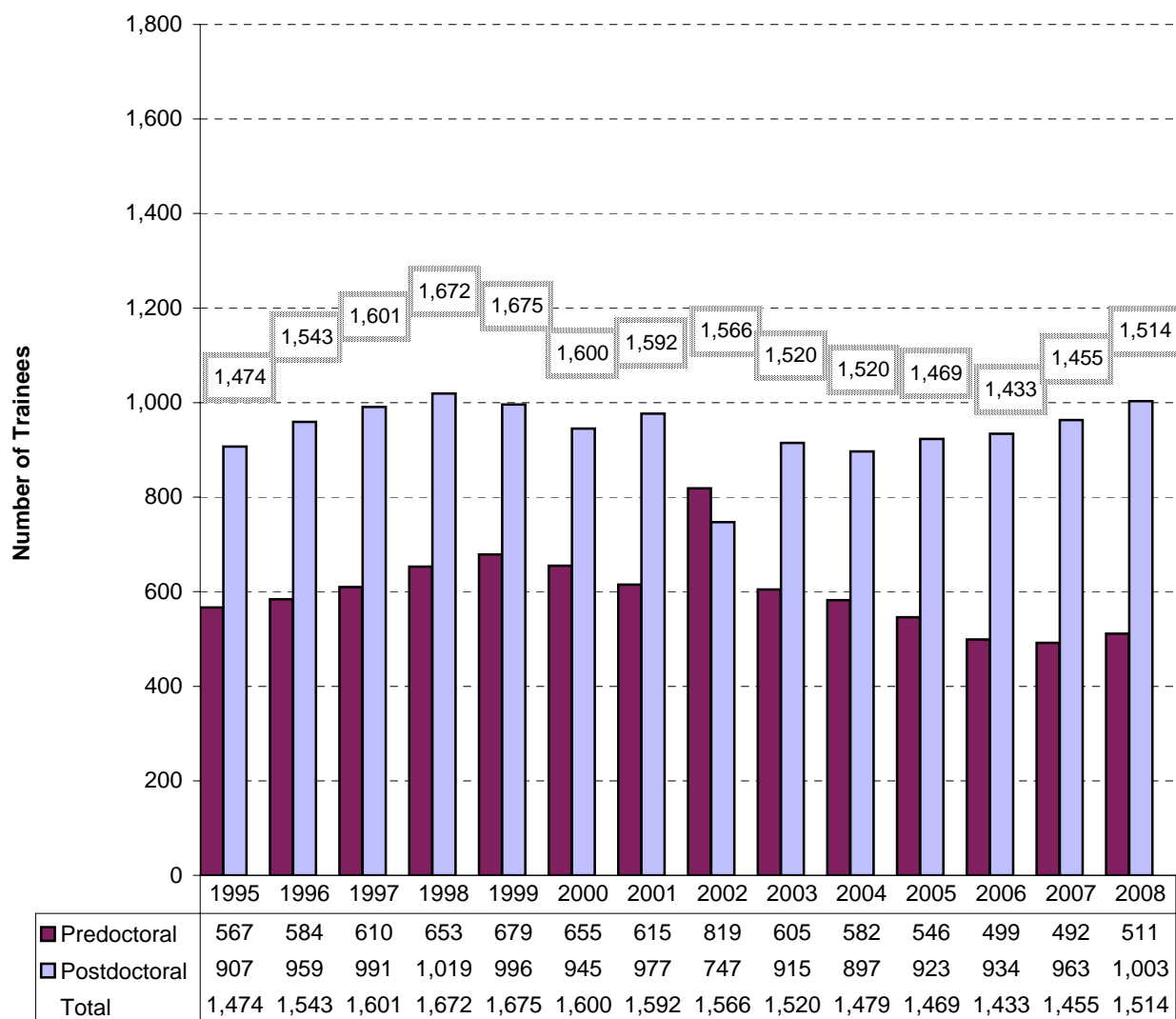
Laboratory and clinical scientists work collaboratively to plan, design and implement research programs that impact on cancer prevention, detection, diagnosis, treatment and control. To facilitate this research, each SPORE develops and maintains specialized resources that benefit all scientists working on the specific cancer site, as well as SPORE scientists. An additional SPORE element is a career development program that recruits scientists both within and outside the SPORE institution to enlarge the cadre of laboratory and clinical scientists dedicated to translational research on human cancer. SPOREs meet annually to share data, assess research progress, identify new research opportunities and establish research priorities.

Mechanism	Site	No.	Amount
P50 SPOREs	Brain	4	\$6,685
	Breast	10	22,162
	Cervical	1	1,165
	Genitourinary	2	3,655
	Gastrointestinal	5	11,379
	Head and Neck	4	8,642
	Leukemia	1	2,340
	Lung	8	14,781
	Lymphoma	4	8,982
	Myeloma	1	2,300
	Ovarian	4	8,584
	Pancreatic	2	3,367
	Prostate	9	17,791
	Skin	5	11,284
	Subtotal	60	123,117
Co-funded	Head & Neck with NIDCR	0	176
	Total Co-funded		176
Total		60	\$123,293

NRSA Predoctoral and Postdoctoral Trainees

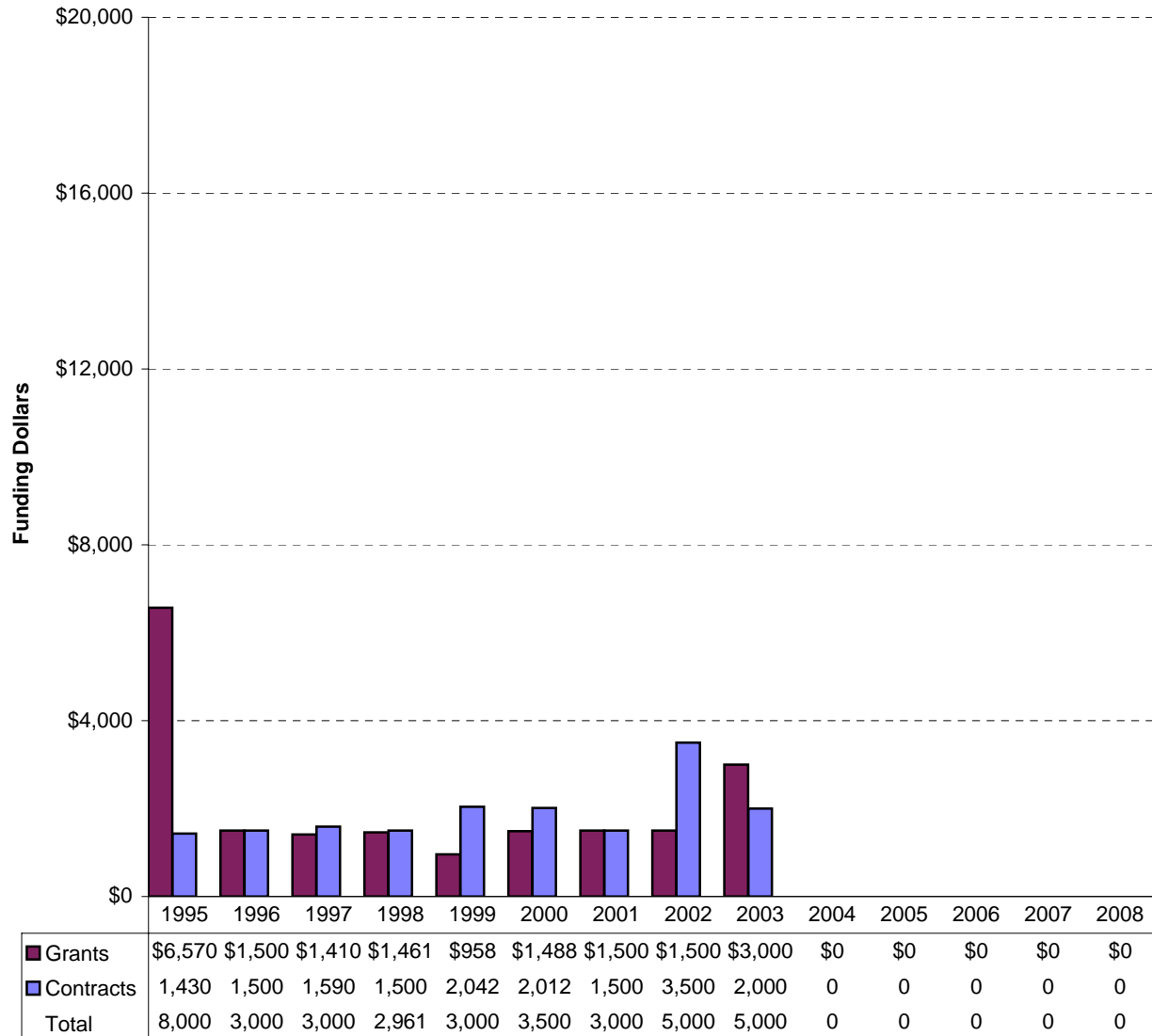
Fiscal Years 1995-2008

(Full Time Trainee Positions)



Construction/Renovation Funding Fiscal Years 1995 - 2008

(Dollars in Thousands)



*Excludes Buildings and Facilities used for repairs and improvements at the NCI - Frederick facility totaling \$7,936 in FY 2005, \$7,920 in FY 2006, \$7,920 in FY 2007, and \$7290 in FY 2008

Grant and Contract Awards by State Fiscal Year 2008

(Dollars in Thousands)

State	Grants		Contracts		Total NCI		State
	No	Amount	No	Amount	No	Amount	
Alabama	74	\$32,673	6	\$5,474	80	\$38,147	Alabama
Alaska	2	806			2	806	Alaska
Arizona	83	40,043	3	1,997	86	42,040	Arizona
Arkansas	19	8,298	1	150	20	8,448	Arkansas
California	922	459,429	24	26,888	946	486,317	California
Colorado	103	35,152	3	2,121	106	37,274	Colorado
Connecticut	98	35,251	2	2,808	100	38,059	Connecticut
Delaware	4	1,726			4	1,726	Delaware
District of Columbia	74	28,744	21	12,097	95	40,841	District of Columbia
Florida	165	58,249	4	2,185	169	60,434	Florida
Georgia	92	35,787	9	5,992	101	41,778	Georgia
Hawaii	22	15,554	3	4,903	25	20,458	Hawaii
Idaho			1	149	1	149	Idaho
Illinois	267	109,254	12	8,897	279	118,151	Illinois
Indiana	83	26,398	1	150	84	26,547	Indiana
Iowa	41	15,140	3	5,715	44	20,855	Iowa
Kansas	17	6,684	4	1,860	21	8,544	Kansas
Kentucky	56	13,329	3	2,477	59	15,806	Kentucky
Louisiana	37	9,793	2	1,891	39	11,684	Louisiana
Maine	10	4,956			10	4,956	Maine
Maryland	265	117,619	64	322,229	329	439,848	Maryland
Massachusetts	661	330,660	16	16,735	677	347,396	Massachusetts
Michigan	209	115,243	6	8,560	215	123,803	Michigan
Minnesota	205	95,682	6	6,202	211	101,885	Minnesota
Mississippi	3	663			3	663	Mississippi
Missouri	109	50,305	9	6,289	118	56,594	Missouri
Montana	3	1,434			3	1,434	Montana
Nebraska	38	14,968			38	14,968	Nebraska
Nevada	12	3,681			12	3,681	Nevada
New Hampshire	55	24,136	2	367	57	24,502	New Hampshire
New Jersey	99	30,078	4	3,529	103	33,607	New Jersey
New Mexico	36	13,297	1	1,653	37	14,950	New Mexico
New York	598	269,243	10	8,958	608	278,201	New York
North Carolina	290	120,622	6	2,989	296	123,612	North Carolina
North Dakota	6	1,680			6	1,680	North Dakota
Ohio	253	99,693	8	4,448	261	104,141	Ohio
Oklahoma	18	4,175	2	1,659	20	5,834	Oklahoma
Oregon	57	17,125	0		57	17,125	Oregon
Pennsylvania	494	208,535	4	4,740	498	213,274	Pennsylvania
Rhode Island	45	13,767			45	13,767	Rhode Island
South Carolina	50	15,140			50	15,140	South Carolina
South Dakota	4	1,407			4	1,407	South Dakota
Tennessee	184	96,895	1	1,142	185	98,036	Tennessee
Texas	529	209,146	9	4,601	538	213,747	Texas
Utah	39	12,574	2	2,674	41	15,248	Utah
Vermont	13	4,254			13	4,254	Vermont
Virginia	113	61,815	30	33,591	143	95,406	Virginia
Washington	241	131,189	4	5,488	245	136,678	Washington
West Virginia	9	1,792	1	734	10	2,527	West Virginia
Wisconsin	111	41,814	6	3,381	117	45,194	Wisconsin
Subtotal	6,918	3,045,900	293	525,770	7,211	3,571,671	Subtotal
American Samoa	2	430			2	430	American Samoa
Guam	0	37			0	37	Guam
Puerto Rico	5	3,364			5	3,364	Puerto Rico
Total	6,925	3,049,731	293	525,770	7,218	3,575,501	Total

Excludes STAMP, NRSA TAP, Loan Repayment Program, Foreign Contracts and Grants, Program Evaluation, and other assessments and miscellaneous expenses.

Grant and Contract Awards by Country Fiscal Year 2008

(Dollars in Thousands)

Country	Grant		Contract		Total NCI		Country
	No	Amount	No	Amount	No	Amount	
Australia	10	\$3,945			10	\$3,945	Australia
Belgium	1	793			1	793	Belgium
Brazil		27				27	Brazil
Canada	27	8,606	1	576	28	9,182	Canada
China	1	176	2	259	3	435	China
Costa Rica			1	3,621	1	3,621	Costa Rica
Egypt	1	54			1	54	Egypt
Finland			1	179	1	179	Finland
France	4	2,344			4	2,344	France
Germany	2	438			2	438	Germany
Iceland	1	274			1	274	Iceland
India	1	267			1	267	India
Ireland	1	202			1	202	Ireland
Israel	10	1,944			10	1,944	Israel
Mexico	0	121				121	Mexico
Netherlands	3	385			3	385	Netherlands
New Zealand	1	55			1	55	New Zealand
Russia			2	211	2	211	Russia
Singapore	1	385			1	385	Singapore
South Africa	1	46			1	46	South Africa
Spain	3	554			3	554	Spain
Sweden	3	912			3	912	Sweden
Switzerland	2	534			2	534	Switzerland
Turkey		26				26	Turkey
United Kingdom	12	3,399	1	182	13	3,581	United Kingdom
Total Foreign	85	25,488	8	5,028	93	30,516	

Excludes STAMP, NRSA TAP, Loan Repayment Program, Foreign Contracts and Grants, Program Evaluation, and other assessments and miscellaneous expenses.

Institutions Receiving More than \$15 Million in NCI Support, FY 2008

(Dollars in Thousands)

State	Institution	Grants	Contracts	Total NCI
Alabama	University of Alabama at Birmingham	\$25,263	\$3,201	\$28,464
Arizona	University of Arizona	29,388	1,850	31,238
California	Burnham Institute for Medical Research	19,442		19,442
	City of Hope's Beckman Research Institute	23,275		23,275
	National Childhood Cancer Foundation	43,442		43,442
	Scripps Research Institute	15,662		15,662
	Stanford University	49,812		49,812
	University of California System	185,740	3,679	189,418
	University of Southern California	32,796	3,572	36,368
Colorado	University of Colorado Health Sciences Center	25,007	1,437	26,443
Connecticut	Yale University	30,527	794	31,321
District of Columbia	Georgetown University	20,951	4,827	25,778
Florida	H. Lee Moffitt Cancer Center & Research Institute	32,392	472	32,864
Georgia	Emory University	22,129	1,839	23,968
Hawaii	University of Hawaii	14,441	832	15,272
Illinois	Northwestern University	28,506	956	29,462
	University of Chicago	43,371	2,023	45,394
	University of Illinois at Chicago	16,314		16,314
Iowa	University of Iowa	12,513	5,715	18,228
Maryland	The Johns Hopkins University	77,007	45	77,052
	SAIC-Frederick, Inc.		208,028	208,028
	Westat, Inc.		42,384	42,384
Massachusetts	Beth Israel Deaconess Medical Center	19,600		19,600
	Brigham and Women's Hospital	41,020		41,020
	Dana-Farber Cancer Institute	86,545		86,545
	Harvard University	29,861		29,861
	Massachusetts General Hospital	35,035	2,845	37,880
	Massachusetts Institute of Technology	31,012		31,012
	Univ of Massachusetts Med Sch Worcester	15,725		15,725
Michigan	University of Michigan at Ann Arbor	86,130		86,130
	Wayne State University	16,209	5,552	21,761
Minnesota	Mayo Clinic in Rochester	57,838	4,006	61,844
	University of Minnesota	34,407	2,011	36,418
Missouri	Washington University	42,308	3,336	45,644
New Hampshire	Dartmouth College	23,798	217	24,015
New York	Columbia University Health Sciences	25,287	280	25,567
	Mount Sinai School of Medicine	20,092		20,092
	New York University	18,047		18,047
	Roswell Park Cancer Institute Corporation	29,618		29,618
	Sloan-Kettering Institute for Cancer Research	77,452	3,936	81,388
	University of Rochester	16,979		16,979
	Yeshiva University	20,119		20,119
North Carolina	Duke University	49,555	870	50,424
	University of North Carolina at Chapel Hill	45,696		45,696
Ohio	Case Western Reserve University	24,767		24,767
	Ohio State University	42,097	2,429	44,527
	Fox Chase Cancer Center	25,372	3,574	28,946
	University of Pennsylvania	51,311		51,311
	University of Pittsburgh	55,073	1,166	56,239
Tennessee	St. Jude Children's Research Hospital	22,564	1,141	23,705
	Vanderbilt University	66,005		66,005
Texas	Baylor College of Medicine	32,452		32,452
	University of Texas, MD Anderson Cancer Center	110,588	3,358	113,946
	University of Texas, SW Medical Center at Dallas	15,979		15,979
Virginia	American College of Radiology	23,035		23,035
	University of Virginia at Charlottesville	17,204		17,204
	Virginia Commonwealth University	15,305	45	15,350
Washington	Fred Hutchinson Cancer Research Center	82,832	5,293	88,125
	University of Washington	29,634	45	29,679
Wisconsin	University of Wisconsin	30,315	2,101	32,416
	Total	\$2,214,844	\$323,858	\$2,538,703

Includes Manpower Development Grants

Appropriations of the NCI 1938-2007

(In Whole Dollars)

1938 - 1969	\$1,875,699,720	
1970 - 1979	6,073,870,500	
1980 - 1989	11,958,860,000	
1991.....	1,766,324,000	prior to reductions in PL 101-517 (-\$8,972,000 for salary and expense reduction; -\$42,568,000 for across-the-board reduction).
1992.....	1,989,278,000	prior to reductions in PL 102-170 (-\$21,475,000 for salary and expense reduction; -\$1,262,000 for travel reduction; \$15,000,000 transferred to
1993.....	2,007,483,000	prior to reductions in PL 102-294 (-\$16,060,000 for .8% reduction to all line items, -\$9,933,000 for S&E reduction, -\$139,000 for consultant services reduction).
1994.....	2,082,267,000	prior to reduction in PL 103-211 (-\$5,885,000 administration reduction).
1995.....	2,135,119,000	prior to reductions in PL 103-211 (-\$1,883,000 for Procurement
1996.....	2,251,084,000	Includes \$225,790,000 of AIDS funding.
1997.....	2,382,532,000	Includes \$224,983,000 of AIDS funding.
1998.....	2,547,314,000	prior to reductions in PL 105-119 (-\$4,755,000 via the Secretary's 1%
1999.....	2,927,187,000	prior to reductions in PL 106-51 (-\$1,940,000 for travel and admin. expenses). Includes -\$931,000 transferred via the Secretary 1% transfer authority, and -\$6,259,000 transferred via the NIH Director's 1% transfer authority, and \$239,190,000 of AIDS funding.
1991 - 1999	20,088,588,000	
2000.....	3,332,317,000	prior to reductions in PL 106-113 (-\$17,763,000 for across the board reduction). Includes \$245,804,000 of AIDS funding.
2001.....	3,757,242,000	prior to reductions in PL 106-554(-\$2,005,000 for across-the-board reduction). Includes -\$711,000 Secretary's 1% transfer, -\$781,000 transfer for Office of Human Research Protection and -\$24,000 lapse. Includes \$255,960,000 of AIDS funding.
2002.....	4,190,405,000	prior to reductions in PL 107-116(-\$4,524,000 via the Secretary's 1% transfer authority, -\$2,054,000 for the enacted rescission, -\$7,118,000 administrative reduction and -\$8,000 lapse). Includes \$254,396,000 of AIDS funding.
2003.....	4,622,394,000	prior to reductions in PL 108-7(-\$30,046,000 for the enacted rescission and -\$2,000 lapse). Includes \$263,442,000 of AIDS funding.
2004.....	4,770,519,000	prior to reductions in PL 108-199(-\$3,136,000 for Labor/HHS/ED rescission; \$28,128,000 for across the board reduction; -\$15,357,000 NIH 1% transfer assessment, and \$5,000 lapse). Includes \$266,975,000 of AIDS funding.
2005.....	4,865,525,000	prior to reductions in PL 108-447(\$38,914,000 .8% across the board reduction; -\$1,353,000 for Labor/HHS/ED rescission; -\$30,505,000 NIH 1% transfer assessment, and \$9,000 lapse). Includes \$265,907,000 of AIDS funding.
2006.....	4,841,774,000	prior to reductions in PL 109-149 (-\$48,418,000 for Labor/HHS/ED rescission; -\$3,293,000 HHS transfer for CMS activities; -\$42,834,000 NIH 1% transfer for roadmap activities, and \$4,000 lapse). Includes \$253,866,000 of AIDS funding.
2007.....	4,797,639,000	prior to reductions in PL 110-5 (-\$5,015,000 NIH transfer for GEI activities, and \$9,000 lapse). Includes \$253,866,000 of AIDS funding.
2008.....	4,827,556,000	Includes supplemental appropriation of \$25,559,000
1938-2008	80,002,389,220	

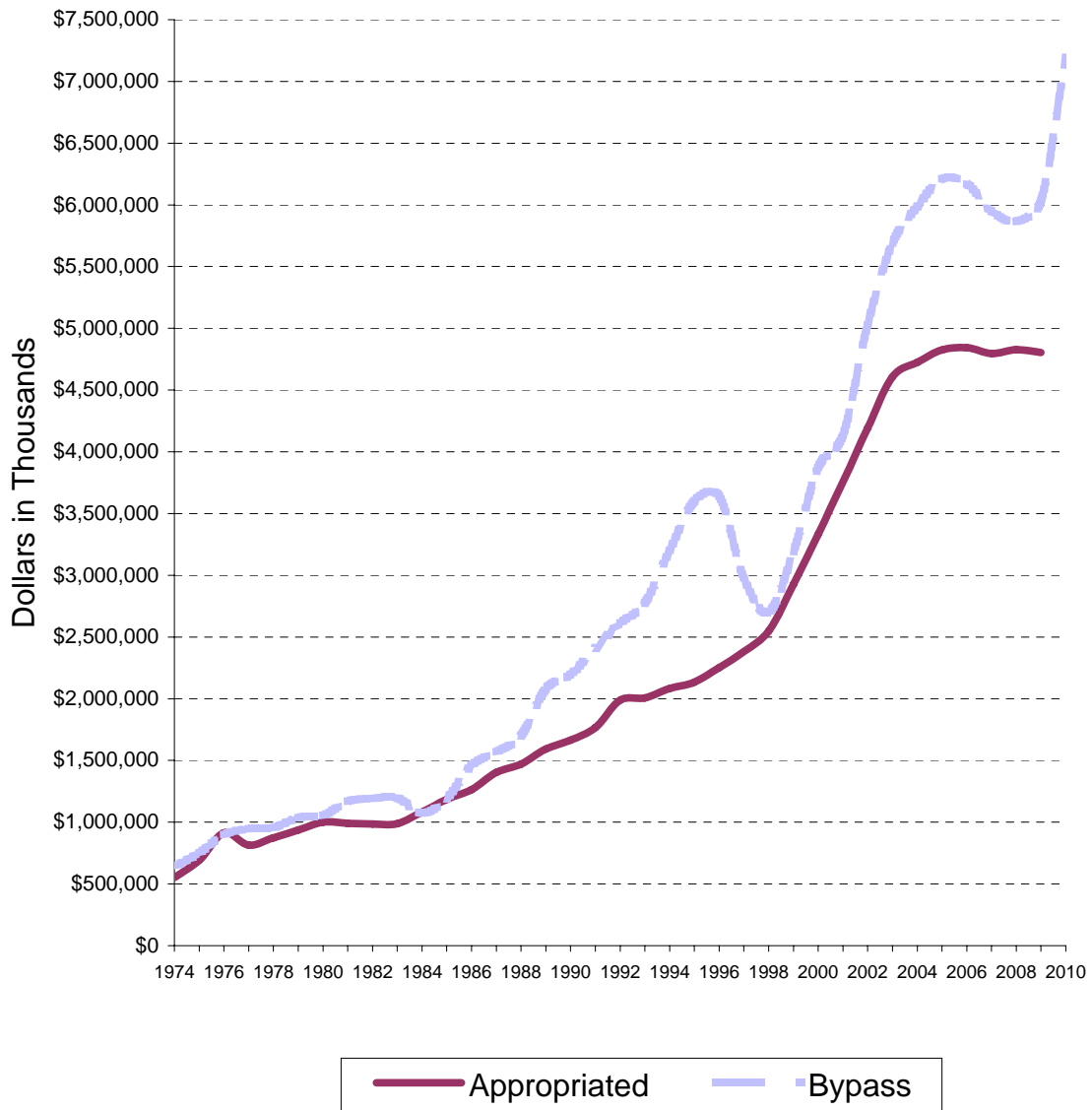
Bypass Budget Requests Fiscal Years 1973 - 2009

(In Whole Dollars)

Fiscal Year	Request
1974.....	640,031,000
1975.....	750,000,000
1976.....	898,500,000
1977.....	948,000,000
1978.....	955,000,000
1979.....	1,036,000,000
1980.....	1,055,000,000
1981.....	1,170,000,000
1982.....	1,192,000,000
1983.....	1,197,000,000
1984.....	1,074,000,000
1985.....	1,189,000,000
1986.....	1,460,000,000
1987.....	1,570,000,000
1988.....	1,700,000,000
1989.....	2,080,000,000
1990.....	2,195,000,000
1991.....	2,410,000,000
1992.....	2,612,000,000
1993.....	2,775,000,000
1994.....	3,200,000,000
1995.....	3,600,000,000
1996.....	3,640,000,000
1997.....	2,977,000,000
1998.....	2,702,500,000
1999.....	3,191,000,000
2000.....	3,873,000,000
2001.....	4,135,000,000
2002.....	5,030,000,000
2003.....	5,690,000,000
2004.....	5,986,000,000
2005.....	6,211,000,000
2006.....	6,170,000,000
2007.....	5,949,714,000
2008.....	5,865,788,000
2009.....	6,028,386,000
2009.....	6,028,386,000
2010.....	7,193,393,000

The National Cancer Act in December 1971, included a provision for the Director, NCI to submit an annual budget request directly to the President, with comment only by NIH and DHHS. This Bypass Budget was first submitted for 1973.

Bypass Requests and Appropriations of the NCI Fiscal Years 1974 - 2009



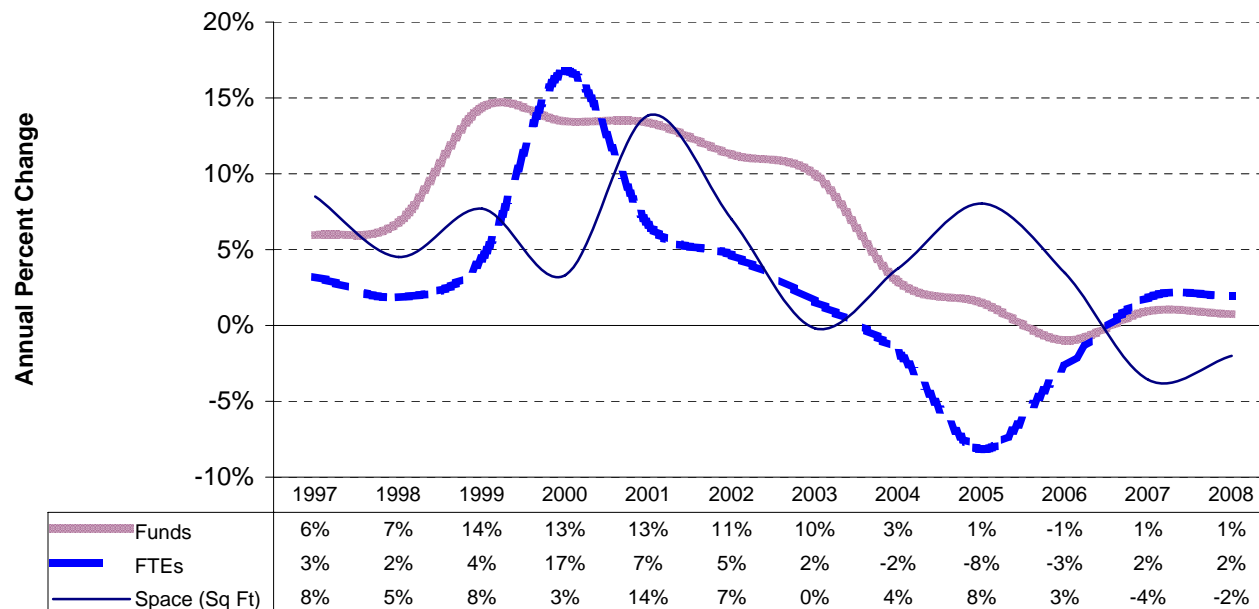
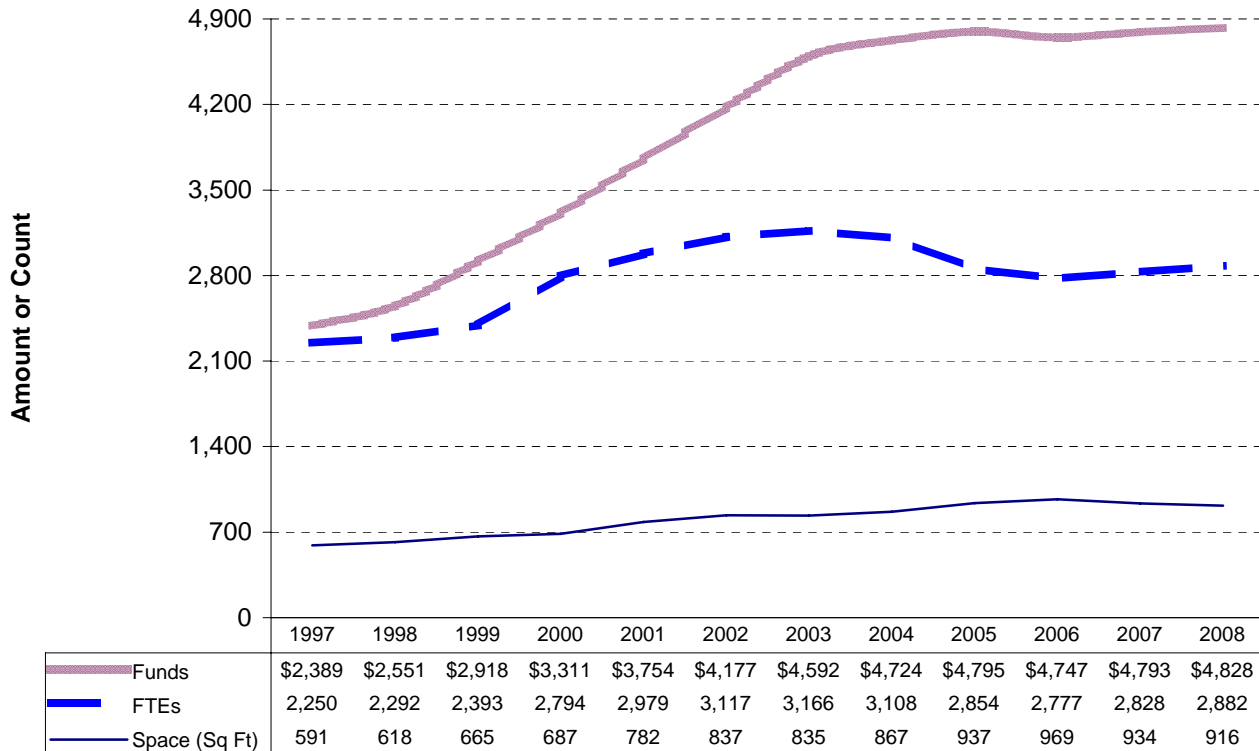
Comparison of Dollars, Positions and Space Fiscal Years 1997 - 2008

Funds are obligations against the annual appropriation in millions of dollars.

FTEs are the number of workyears for appointed employees of the NCI. A workyear equals 2,080 hours.

The increase in FTEs in FY 2000 is due to the fact that 195 contract staff were converted to NCI appointments.

Space is in thousands of square feet, excluding NCI-Frederick.



Personnel Resources
Fiscal Years 1999 - 2008

Fiscal Year	Full Time Permanent Appointment	Other than Full Time Permanent	Training Fellows	Total Personnel Resources
1999	1,941	628	1,060	3,629
2000	2,139	831	1,202	4,172
2001	2,224	912	963	4,099
2002	2,250	979	949	4,178
2003	2,193	1,073	1,191	4,457
2004	2,083	990	1,232	4,305
2005	1,959	882	1,077	3,918
2006	2,579	289	1,113	3,981
2007	2,421	498	1,111	4,030
2008	2,075	920	1,016	4,011

AIDS Funding History

Fiscal Years 1993 - 2007

Fiscal Year	NCI	NIH	% NCI of NIH
1994	212,868	1,298,996	16%
1995	217,430	1,333,600	16%
1996	225,360	1,411,860	16%
1997	224,733	1,501,073	15%
1998	225,991	1,559,071	14%
1999	239,190	1,797,422	13%
2000	244,145	2,005,100	12%
2001	237,789	2,244,160	11%
2002	254,396	2,500,866	10%
2003	263,442	2,718,171	10%
2004	266,975	2,840,384	9%
2005	265,907	2,909,381	9%
2006	253,666	2,902,183	9%
2007	253,666	2,904,536	9%
2009	258,499	2,928,300	9%

