

Professional  
Advancement  
Virtual  
Engagement  
Series



## Seminar 9 Establishing Your Research Group



Marta Epeldegui, PhD

Assistant Professor, OB-GYN  
University of California Los Angeles (UCLA)  
AIDS Institute



Liva Harinantenaina Rakotondraibe, PhD

Associate Professor, College of Pharmacy  
The Ohio State University

**October 25, 2021, 3 – 5 p.m. ET**

<https://cbiit.webex.com/cbiit/j.php?MTID=m0bf6bf84698369e257dc7e4b811cf64d>

Coming in November

# NIH VIRTUAL SEMINAR ON PROGRAM FUNDING AND GRANTS ADMINISTRATION

*Empowering the Research Workforce to Fuel Scientific Discovery*

Monday, November 1 - Thursday, November 4

**FREE REGISTRATION**

Register Now!



#nihsem

<https://nihvirtalseminar2021.vfairs.com/en/agenda-page>  
<https://grants.nih.gov/2021-nih-virtual-seminar.htm#registration>

# PAVES 9: Networking Session

## Ground Rules

- Use respect to make this a safe space to chat
- Participate – listen and chat 😊
- Allow everyone the chance to speak
- Use of camera is highly encouraged

Credit: COH

Credit: HCI

# PAVES 9: Networking Session

## Discussion Topic 1

What was the most striking and/or useful take away message from today's presentations for you?

How will you apply it to your own situation/career?

Credit: COH

Credit: HCI



Professional

Advancement

Virtual

CURE Engagement

Series

**Coming in November**  
Seminar 10

Cancer Systems Biology: Combining  
Computational Modeling, Experimental  
Methods, and Engineering to Address  
Cancer Biology Questions

**November 30, 2021, 3 – 5 p.m. ET**



**NATIONAL  
CANCER  
INSTITUTE**

**@NCICRCHD**

<https://www.cancer.gov/about-nci/organization/crchd>

**www.cancer.gov**

**www.cancer.gov/espanol**

Marta Epeldegui, PhD  
UCLA AIDS Institute

**Research in the Epeldegui lab is  
focused on studying AIDS-  
malignancies**



# How does HIV infection lead to B-cell lymphoma?

Many AIDS-associated cancers are associated with infection with oncogenic viruses (EBV, HHV8, HPV).

HIV infection results in the **loss of specific immunity to cells infected with such viruses**, leading to uncontrolled viral infection, transformation of infected cells, and cancer.

However, not all cancers seen in HIV+ populations are infected with an oncogenic virus.

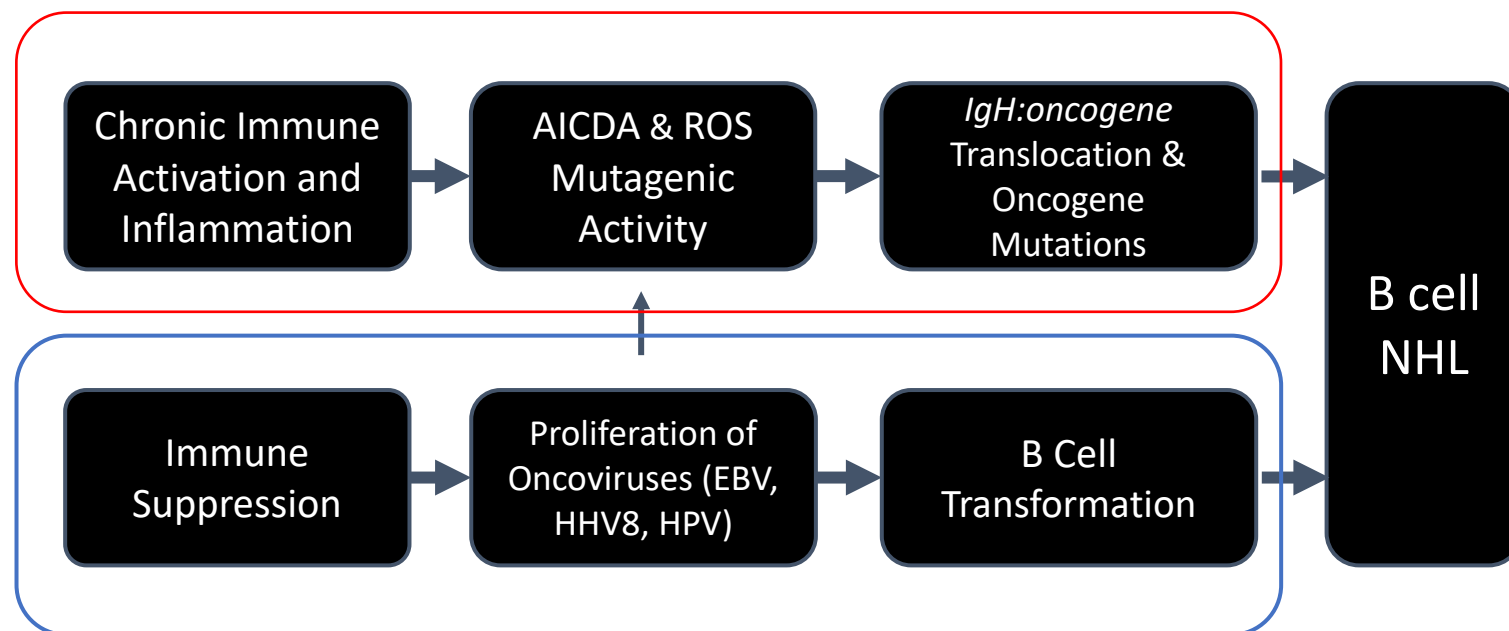
HIV infection also results in the **chronic inflammation and immune system activation** (both antigen-specific and polyclonal), leading to DNA-modifying events and **oncogenic molecular errors** that result in cancer.

# AIDS-associated non-Hodgkin lymphoma

- Two major mechanisms are believed to contribute to the development of AIDS-NHL:
  - 1) loss of immunoregulatory control of EBV-infected B cells
  - 2) molecular lesions (oncogene mutations, *MYC:IgH* translocations) that result from errors in DNA modifying events (somatic hypermutation, class switch recombination) that occur during the process of B cell activation.
  
- Evidence that B cell activation is associated with AIDS-NHL comes from studies showing that:
  - serum levels of several cytokines (Breen, *et al.* CEBP 20:1303, 2011), and PBMC AICDA expression (Epeldegui, *et al.* AIDS 21:2265, 2007), are elevated prior to AIDS-NHL diagnosis
  - HIV can directly induce AICDA expression and production of cytokines, including IL10, in B cells (Epeldegui, *et al.* PLoS ONE 5:e11448, 2010).

# Model for Lymphomagenesis in HIV infection

>500 CD4 count, mainly systemic DLBCL and BL  
HAART exposed



<100 CD4 count, mainly EBV+ CNS lymphoma

# Features of AIDS-NHL Subtypes

AIDS-NHL Subtype	Virus	%	CD4+ T cell count	Characteristic molecular lesions	
				Oncogene hyper-mutation	Translocations
Primary CNS lymphoma (25%-30%)	EBV	100	<50		
Primary effusion lymphoma (PEL) (rare)	EBV KSHV	50-80 100	<50		
Systemic diffuse large B cell lymphoma (DLBCL) (25%-30%)	EBV	40-60	>200	Majority	<i>BCL-6</i> mutations & translocation
Burkitt's lymphoma (25%-30%)	EBV	30-50	>200	Some	<i>c-MYC:IgH</i> translocation

# Hypothesis:

**Elevated immune activation and inflammation (elevated serum cytokines and biomarkers) precede the diagnosis of AIDS-NHL**



- We and others have shown that:

- AICDA is elevated prior to AIDS-NHL and that CD40L HIV virions induced AICDA expression in B cells (Epeldegui et al. AIDS, 2007, Epeldegui PLoS One 2011, Imbeault et al. J. Virol. 2011)
- Chronic Immune activation is elevated prior AIDS-NHL (Vedrame et al. CEBP 2013)
- Microbial translocation is elevated prior to AIDS-NHL (Epeldegui et al. AIDS 2018, Marks et al. AIDS 2014). Microbial translocation is the translocation of commensal microbial products from the intestinal lumen into the systemic circulation in the absence of overt bacteremia.

# How do we study lymphomagenesis?

- By studying **biomarkers** as predictors of disease or as prognostic for treatment.
  - ✓ **Immune biomarkers**, such as markers of inflammation , immune function (Th1, TH2, TFH, TH17), soluble receptors.
  - ✓ **Biomarkers of microbial translocation**, Microbial translocation is present in different diseases: HCV, HBV and HIV infection, IBD, alcohol use, GVHD, Fatty liver disease.
  - ✓ **Exosomes** as biomarkers, exosomes are extravesicles secreted by cells, that carry proteins in cell surface or as cargo, they can also carry DNA/RNA.
- By studying the role of regulatory B cells or Bregs, Bregs are characteristic for being CD19<sup>+</sup>CD38<sup>++</sup>CD24<sup>++</sup> and have regulatory function by secreting IL10 and expressing PDL1. Therefore having dual function in disease:
  - 1) Inhibiting T cell function through IL-10 and PDL1
  - 2) Activating B cells, since IL10 is a B cell stimulatory cytokine.

# A prospective study of serum microbial translocation biomarkers and risk of AIDS-related non-Hodgkin lymphoma

Marta Epeldegui<sup>a</sup>, Larry Magpantay<sup>a</sup>, Yu Guo<sup>a</sup>, Gordana Halec<sup>a</sup>,  
William G. Cumberland<sup>a</sup>, Priscilla K. Yen<sup>a</sup>, Bernard Macatangay<sup>b</sup>,  
Joseph B. Margolick<sup>c</sup>, Anne F. Rositch<sup>c</sup>, Steven Wolinsky<sup>d</sup>,  
Otoniel Martinez-Maza<sup>a</sup> and Shehnaz K. Hussain<sup>e</sup>

**Background:** Chronic immune activation is a harbinger of AIDS-associated non-Hodgkin lymphoma (AIDS-NHL), yet the underlying basis is unclear. Microbial translocation, the passage of microbial components from the gastrointestinal tract into the systemic circulation, is a source of systemic immune activation in HIV infection and may be an important contributor to chronic B-cell activation and subsequent AIDS-NHL development.

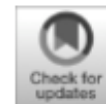
**Method:** We measured biomarkers of microbial translocation including bacterial receptors/antibodies, intestinal barrier proteins, and macrophage activation-associated cytokines/chemokines, in serum from 200 HIV-infected men from the Multicenter AIDS Cohort Study prior to their AIDS-NHL diagnosis (mean = 3.9 years; SD = 1.6 years) and 200 controls. Controls were HIV-infected men who did not develop AIDS-NHL, individually matched to cases on CD4<sup>+</sup> T-cell count, prior antiretroviral drug use, and recruitment year into the cohort.

**Results:** Biomarkers of bacterial translocation and intestinal permeability were significantly increased prior to AIDS-NHL. Lipopolysaccharide-binding protein (LPB), fatty acid-binding protein 2 (FABP2), and soluble CD14 were associated with 1.6-fold, 2.9-fold, and 3.7-fold increases in AIDS-NHL risk for each unit increase on the natural log scale, respectively. Haptoglobin had a 2.1-fold increase and endotoxin-core antibody a 2.0-fold decrease risk for AIDS-NHL (fourth versus first quartile). Biomarkers of macrophage activation were significantly increased prior to AIDS-NHL: B-cell activation factor (BAFF), IL18, monocyte chemoattractant protein-1 (MCP1), tumor necrosis factor- $\alpha$  (TNF $\alpha$ ), and CCL17 had 2.2-fold, 2.0-fold, 1.6-fold, 2.8-fold, and 1.7-fold increases in risk for each unit increase on the natural log scale, respectively.

**Conclusion:** These data provide evidence for microbial translocation as a cause of the systemic immune activation in chronic HIV infection preceding AIDS-NHL development.

Copyright © 2018 Wolters Kluwer Health, Inc. All rights reserved.

## Immune Activation and Microbial Translocation as Prognostic Biomarkers for AIDS-Related Non-Hodgkin Lymphoma in the AMC-034 Study



Laura E. Martínez<sup>1,2</sup>, Shelly Lensing<sup>3</sup>, Di Chang<sup>3</sup>, Larry I. Magpantay<sup>1,2</sup>, Ronald Mitsuyasu<sup>1</sup>, Richard F. Ambinder<sup>4</sup>, Joseph A. Sparano<sup>5</sup>, Otoniel Martínez-Maza<sup>1,2,6</sup>, and Marta Epeldegui<sup>1,2,6</sup>

### ABSTRACT

**Purpose:** AIDS-related non-Hodgkin lymphoma (ARL) is the most common cancer in HIV-infected individuals in the United States and other countries in which HIV-positive persons have access to effective combination antiretroviral therapy (cART). Our prior work showed that pretreatment/postdiagnosis plasma levels of some cytokines, such as IL6, IL10, and CXCL13, have the potential to serve as indicators of clinical response to treatment and survival in ARL. The aims of this study were to identify novel prognostic biomarkers for response to treatment and/or survival in persons with ARL, including biomarkers of microbial translocation and inflammation.

**Experimental Design:** We quantified plasma levels of several biomarkers (sCD14, LBP, FABP2, EndoCab IgM, IL18, CCL2/MCP-1, sCD163, IP-10/CXCL10, TARC/CCL17, TNF $\alpha$ , BAFF/BlyS, sTNFR1I, sCD44, and sIL2R $\alpha$ /sCD25) by multiplexed immunometric assays (Luminex) or ELISA in plasma specimens obtained

from ARL patients enrolled in the AMC-034 trial, which compared infusional combination chemotherapy (EPOCH: etoposide, vincristine, doxorubicin, cyclophosphamide, and prednisone) with concurrent or sequential rituximab. Plasma was collected prior to the initiation of therapy ( $n = 57$ ) and after treatment initiation ( $n = 55$ ).

**Results:** We found that several biomarkers decreased significantly after treatment, including TNF $\alpha$ , sCD25, LBP, and TARC (CCL17). Moreover, pretreatment plasma levels of BAFF, sCD14, sTNFR1I, and CCL2/MCP-1 were univariately associated with overall survival, and pretreatment levels of BAFF, sTNFR1I, and CCL2/MCP-1 were also associated with progression-free survival.

**Conclusions:** Our results suggest that patients with ARL who responded to therapy had lower pretreatment levels of inflammation and microbial translocation as compared with those who did not respond optimally.





OPEN

## Elevated numbers of PD-L1 expressing B cells are associated with the development of AIDS-NHL

Marta Epeldegui<sup>1,2,3</sup>, David V. Conti<sup>4</sup>, Yu Guo<sup>3</sup>, Wendy Cozen<sup>4,5</sup>, Manuel L. Penichet<sup>1,2,6,7,8</sup> & Otoniel Martínez-Maza<sup>1,2,3,7,9</sup>

Received: 15 October 2018

Accepted: 5 June 2019

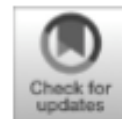
Published online: 28 June 2019

The risk for non-Hodgkin lymphoma (NHL) is markedly increased in persons living with human immunodeficiency virus (HIV) infection, and remains elevated in those on anti-retroviral therapy (cART). Both the loss of immunoregulation of Epstein-Barr virus (EBV) infected cells, as well as chronic B-cell activation, are believed to contribute to the genesis of AIDS-related NHL (AIDS-NHL). However, the mechanisms that lead to AIDS-NHL have not been completely defined. A subset of B cells that is characterized by the secretion of IL10, as well as the expression of the programmed cell death ligand-1 (PD-L1/CD274), was recently described. These PD-L1<sup>+</sup> B cells can exert regulatory function, including the dampening of T-cell activation, by interacting with the program cell death protein (PD1) on target cells. The role of PD-L1<sup>+</sup> B cells in the development of AIDS-NHL has not been explored. We assessed B cell PD-L1 expression on B cells preceding AIDS-NHL diagnosis in a nested case-control study of HIV<sup>+</sup> subjects who went on to develop AIDS-NHL, as well as HIV<sup>+</sup> subjects who did not, using multi-color flow cytometry. Archival frozen viable PBMC were obtained from the UCLA Multicenter AIDS Cohort Study (MACS). It was seen that the number of CD19<sup>+</sup>CD24<sup>++</sup>CD38<sup>++</sup> and CD19<sup>+</sup>PD-L1<sup>+</sup> cells was significantly elevated in cases 1–4 years prior to AIDS-NHL diagnosis, compared to controls, raising the possibility that these cells may play a role in the etiology of AIDS-NHL. Interestingly, most PD-L1<sup>+</sup> expression on CD19<sup>+</sup> cells was seen on CD19<sup>+</sup>CD24<sup>++</sup>CD38<sup>++</sup> cells. In addition, we showed that HIV can directly induce PD-L1 expression on B cells through interaction of virion-associated CD40L with CD40 on B cells.

# How do we study lymphomagenesis?

- By studying follicular CD8 T cells (CD8<sup>+</sup>CXCR5<sup>+</sup>BCL-6<sup>+</sup>PD1<sup>+</sup>):
  - ✓ fCD8 T cells are thought to be induced with inflammation and immune activation and are present in the B cell follicles.
  - ✓ fCD8 T cells have the capability to interact with B cells and induce them to secrete antibodies, more like a helper T cell.
  - ✓ fCD8 T cells may be important in diseases associated with B cell activation such as: autoimmune disease, HIV infection and cancer.
- By studying mouse models of lymphoma:
  - ✓ Using the Humanize mouse model and immune deficient mice as models for lymphomagenesis.

# Targeting TfR1 with the ch128.1/IgG1 Antibody Inhibits EBV-driven Lymphomagenesis in Immunosuppressed Mice Bearing EBV<sup>+</sup> Human Primary B-cells



Laura E. Martínez<sup>1,2</sup>, Tracy R. Daniels-Wells<sup>3</sup>, Yu Guo<sup>1,2</sup>, Larry I. Magpantay<sup>1,2</sup>, Pierre V. Candelaria<sup>3</sup>, Manuel L. Penichet<sup>2,3,4,5,6</sup>, Otoniel Martínez-Maza<sup>1,2,4,5,7</sup>, and Marta Epeldegui<sup>1,2,4</sup>

## ABSTRACT

Epstein–Barr virus (EBV) is a human gammaherpesvirus associated with the development of hematopoietic cancers of B-lymphocyte origin, including AIDS-related non-Hodgkin lymphoma (AIDS-NHL). Primary infection of B-cells with EBV results in their polyclonal activation and immortalization. The transferrin receptor 1 (TfR1), also known as CD71, is important for iron uptake and regulation of cellular proliferation. TfR1 is highly expressed in proliferating cells, including activated lymphocytes and malignant cells. We developed a mouse/human chimeric antibody targeting TfR1 (ch128.1/IgG1) that has previously shown significant antitumor activity in immunosuppressed mouse models bearing human malignant B-cells, including multiple myeloma and AIDS-NHL cells. In this article, we examined the effect of targeting TfR1 to inhibit EBV-driven activation and growth of human B-cells *in vivo* using an immunodeficient NOD.Cg-Prkdc<sup>scid</sup> Il2rg<sup>tm1Wjl</sup>/SzJ [NOD/SCID gamma (NSG)] mouse model. Mice were implanted with T-cell-depleted, human peripheral blood mononuclear cells

(PBMCs), either without EBV (EBV<sup>-</sup>), or exposed to EBV *in vitro* (EBV<sup>+</sup>), intravenously via the tail vein. Mice implanted with EBV<sup>+</sup> cells and treated with an IgG1 control antibody (400 µg/mouse) developed lymphoma-like growths of human B-cell origin that were EBV<sup>+</sup>, whereas mice implanted with EBV<sup>+</sup> cells and treated with ch128.1/IgG1 (400 µg/mouse) showed increased survival and significantly reduced inflammation and B-cell activation. These results indicate that ch128.1/IgG1 is effective at preventing the growth of EBV<sup>+</sup> human B-cell tumors *in vivo*, thus, indicating that there is significant potential for agents targeting TfR1 as therapeutic strategies to prevent the development of EBV-associated B-cell malignancies.

**Significance:** An anti-TfR1 antibody, ch128.1/IgG1, effectively inhibits the activation, growth, and immortalization of EBV<sup>+</sup> human B-cells *in vivo*, as well as the development of these cells into lymphoma-like tumors in immunodeficient mice.

**How it all started?**

# Early career

- Undergraduate in Biology at the Universidad Complutense de Madrid.
- Master's degree in Developmental Biology at the Universidad Complutense de Madrid.
- PhD at University of California Los Angeles in Martinez-Maza lab.
  - ✓ UCLA AIDS Institute Esther Hays Student Research Award.
  - ✓ University AIDS Research Program (UARP) now the California HIV/AIDS Research Program (now CHRP) Fellowship.
  - ✓ NIAID Clinical Immunology Training Grant (T32)
- Postdoc at the University of California Los Angeles Uittenbogaart lab.
  - ✓ NRSA Rheumatology Training Grant (T32)
  - ✓ NRSA Tumor Immunology Training Grant (T32)

# Career Development

- UCLA CFAR career development supplement Award.
- NCI CURE career development supplement Award
- R21- Exploratory Grant Award to Promote Workforce Diversity in Basic Cancer Research. R21-CA220475 (PI: Epeidegui)
- AIDS Malignancies Consortium (AMC) Lab Translational Fellowship.
- All this led to getting my first R01.

# Things that helped me succeed

- Mentors- they are key to your success. Good mentors are invested in your success for you not for them.
- NIH/NCI programs and opportunities- NIH/NCI has lots of opportunities. Program officers are a great resource.
- Perseverance- don't let negative news get to you, dwell for a little then move on and always learn from your failures.
- Collaborators- they are also important on your success. Surround yourself with collaborators that complement your research. It is so much more fun to do science collaborating.
- Take a break- sometimes taking a break and doing something it makes you feel good may be the best medicine.

# Things that I am working on

- Patience- I observe that senior faculty have much more patience.
- It's ok to say no- be realistic with what you can accomplish.
- Let go- it's ok to sometimes not to have everything under control.
- Mentoring- pass on your knowledge onto others, try to change things that don't work.
- Educate on Diversity- talk about it, why is it important, try to break the cycle.
- Be supportive- everyone is different.



# Working on establishing my research group.

Organization of the Epeldegui lab:

## 1) Biomarker arm:

- ✓ We collaborate with groups from all the US measuring biomarkers (mainly epidemiologist).
- ✓ Serve as the biomarker core for the AIDS Malignancies Consortium.
- ✓ Work with cohorts (MACS, AMC,...) on developing new biomarkers.

## 2) Basic research:

- ✓ Studying pathogenesis and how AIDS-NHL develops.

# Working on establishing my research group.

How I am making it work:

- ✓ I share resources with my mentor.
- ✓ Have a lab manager that keeps all the lab maintenance and biomarker work moving.
- ✓ My current postdoc was an undergraduate that worked with me when I was a graduate student.
- ✓ Undergraduates are an important part of the lab (volunteers or work study)
- ✓ Currently looking for another postdoc and a technician.
- ✓ It's hard to balance how much work needs to be done and how much you can afford

**Plans for the future....**

**Keep it up!**

## **Martinez-Maza/ Epeldegui Lab**

Laura Martinez  
Larry Magpantay  
Yu Guo  
Ruchal Patel

### **AMC**

Shelly Lensing  
Di Chang  
Joseph Sparano  
Ron Mitsuyasu  
Richard Ambinder  
Jeff Bethony

### **ACSR**

Paige Bracci  
Jeff Bethony  
Mike McGrath

### **MACS**

Roger Detels  
Otoniel Martinez-Maza  
Shehnaz Hussain

### **UCI**

Wendy Cozen

## **Funding**

NCI- R01CA228157-01  
NCI- AMC Lab/Translational Fellowship  
NCI- UCLA JCCC P30CA016042-S  
NIH-NCI, R21-CA220475  
UCLA Tumor Immunology Training Grant  
(T32), Individual Postdoctoral Fellowship for  
Dr. Martinez, 2T32CA009120-41A1  
NCI- R01CA228157-S02



**UCLA** Jonsson Comprehensive Cancer Center



**THE OHIO STATE UNIVERSITY**

---

# **Making Pieces of the Challenging Puzzles of Natural Product Research**

**Dr. Liva Harinantenaina Rakotondraibe**

**PAVES 9: October 25, 2021**



# Making Pieces of the Challenging Puzzles of Natural Product Research

**PAVES 9**

**Liva Harinantenaina Rakotondraibe**

**Associate Professor**

**Division of Medicinal Chemistry and Pharmacognosy**



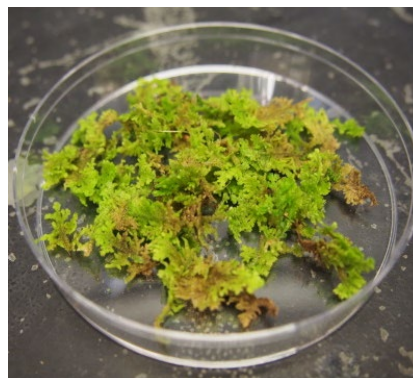
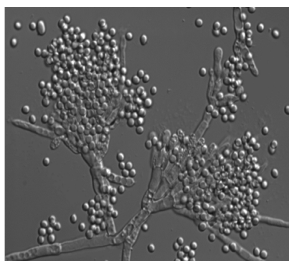
## Higher Plants



# Natural Products



## Liverworts



## Marine organisms and their microbial associates

## Bioactive compounds



## Outline

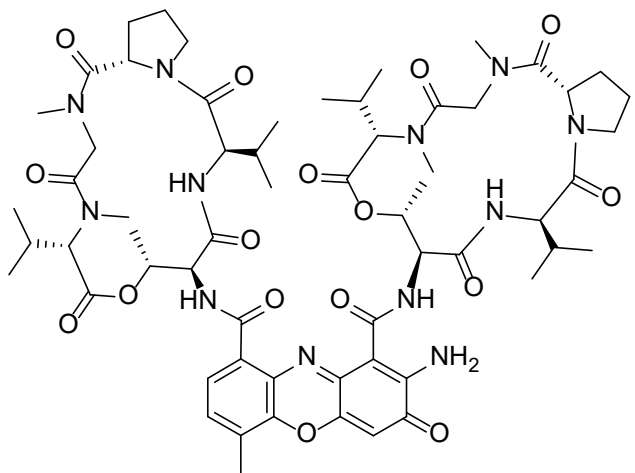
- **Natural products are prominent sources of bioactive compounds**
- **U.S. endemic lichens and their mycobionts are promising source of cytotoxic compounds**
- **Development of Total Correlation Spectroscopy (TOCSY), a Nuclear Magnetic Resonance (NMR)-based dereplication technique to speed up the discovery of new and bioactive compounds**





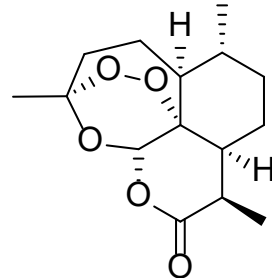
# Why Natural Products?

They are sources of many FDA approved drugs



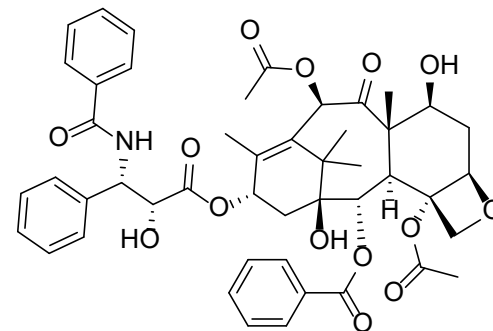
## Actinomycin D

Polypeptide antitumor antibiotic  
*Streptomyces* sp.



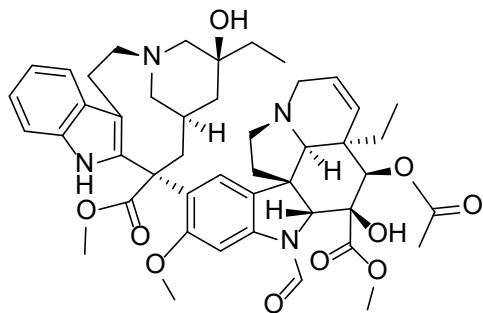
## Artemisinin

Antimalaria  
*Artemisia annua*  
Nobel winner 2015



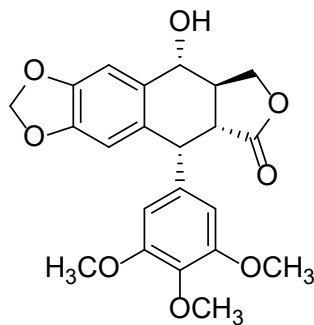
## Paclitaxel (Taxol)

*Taxus brevifolia*



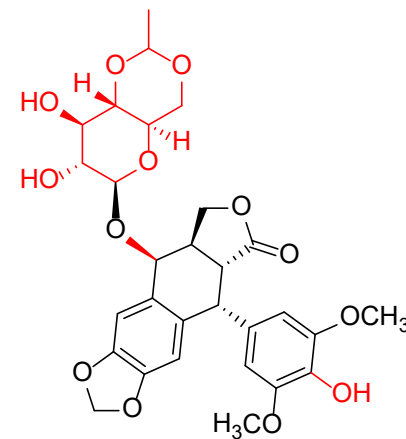
## Vincristine

*Catharanthus roseus*  
Madagascar periwinkle



## Podophyllotoxin

*Podophyllum* sp.



## Etoposide

Epipodophyllotoxin derivative

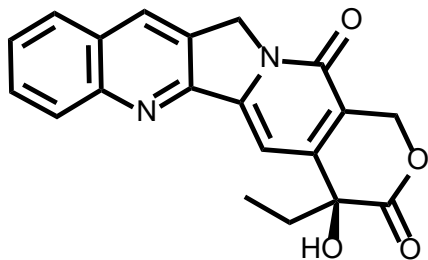


# Why Natural Products?

They are sources of many FDA approved drugs

Derivatization at one site of bioactive natural product affords more active/selective compound(s)

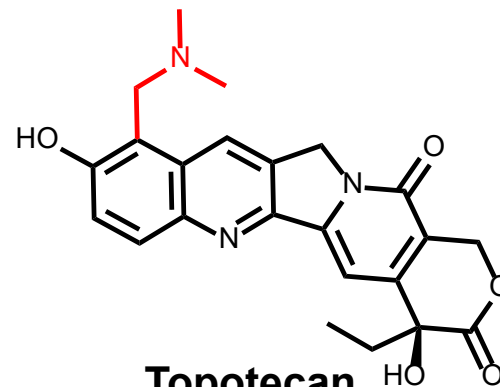
Solubility, stability and side effect issues → Development of derivatives: Topotecan, Irinotecan



Camptothecin

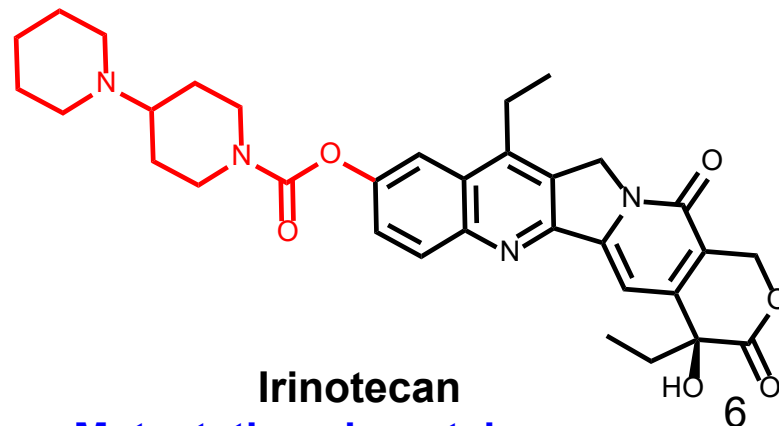


Camptotheca acuminata Decne. (Nyssaceae)



Topotecan

Ovarian, cervical and small-cell lung cancers



Irinotecan

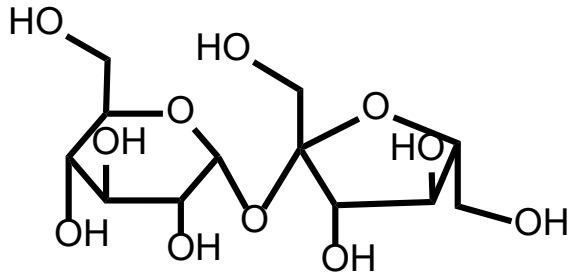
Metastatic colorectal cancer



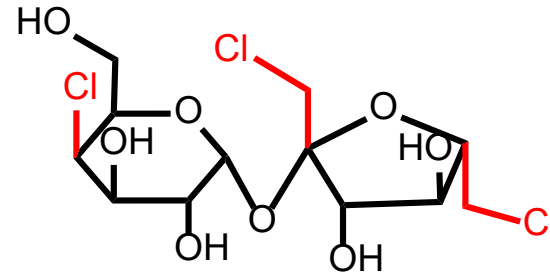
## Why Natural Products?

They are sources of many FDA approved drugs

## No calorie Sweetener



Sucrose



Sucralose



*Saccharum officinarum* (Poaceae)

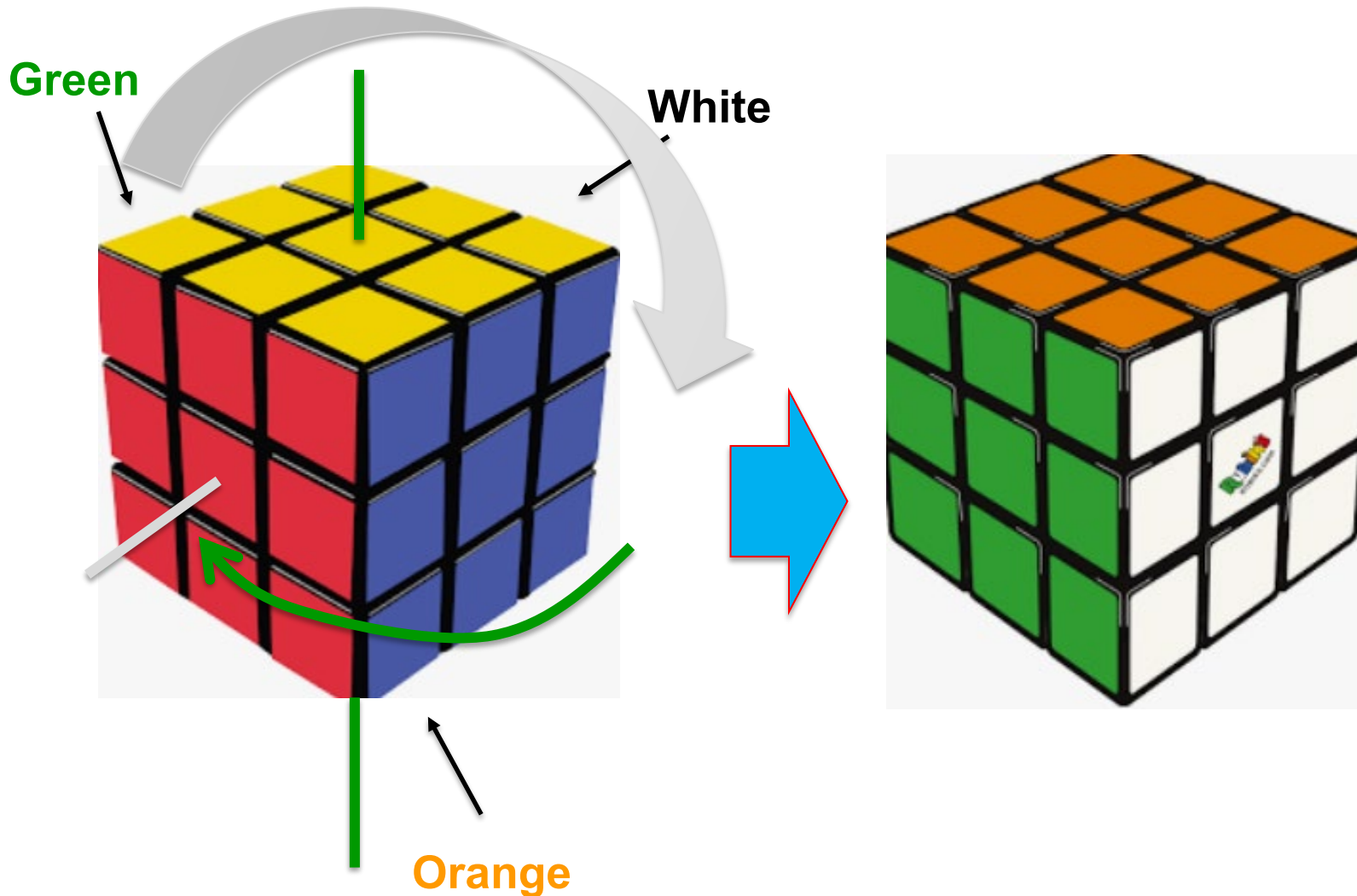




- **Natural products produce bioactive compounds that can be used as medicines, foods, and insecticides or insect repellent,...**
- **Natural products produce compounds that can be used in many area (biomaterials, textile polymers,...)**
- **Natural products produce compounds that can be used to understand pharmacological mechanisms (Capsaicin Nobel winner 2021)**

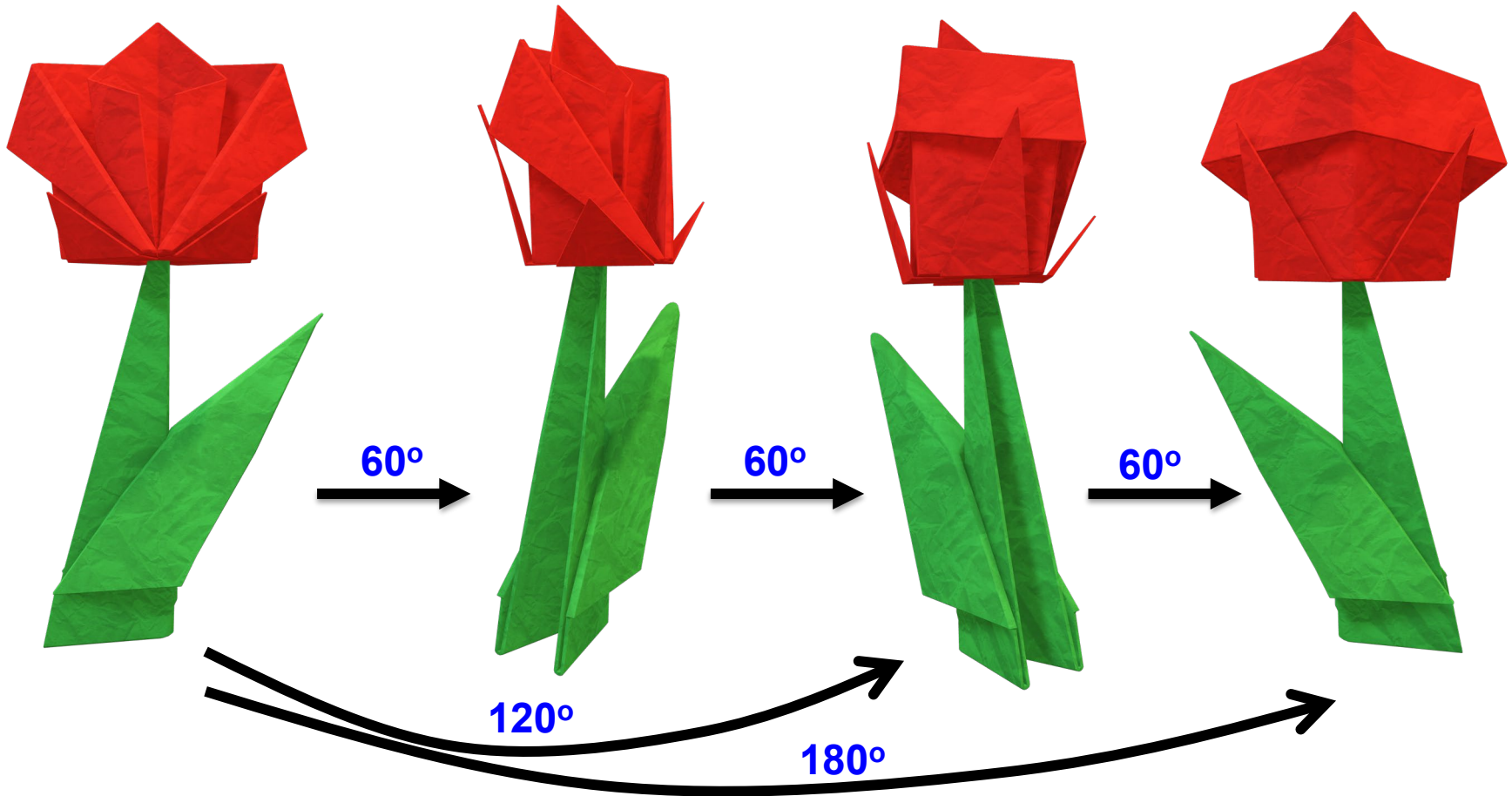


# Making Pieces of the Challenging Puzzles of Natural Product Research





# Understanding the Problems and Challenges





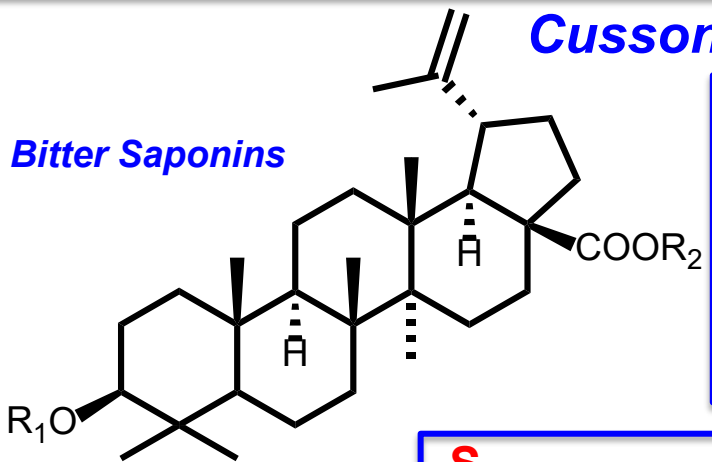
*Cussonia vantsilana* (Araliaceae) endemic to Madagascar





### Cussonia racemosa and C. vantsilana (Araliaceae)

Bitter Saponins



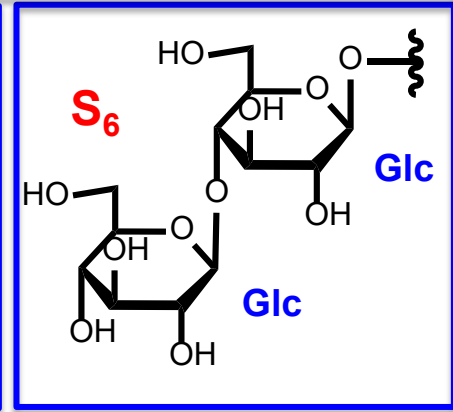
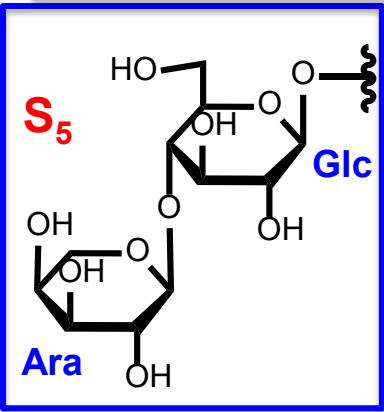
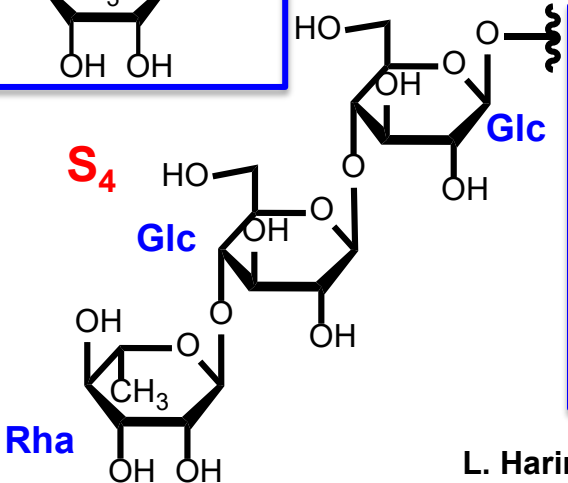
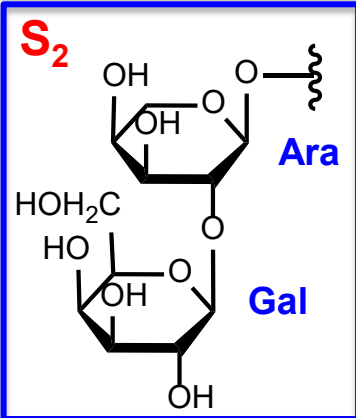
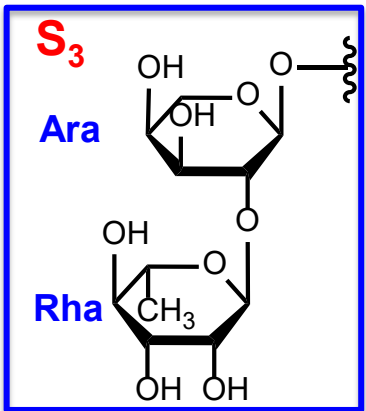
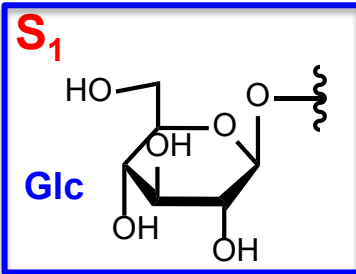
	$R_1$	$R_2$
1:	$S_2$	$S_4$
2:	$S_3$	$S_4$
3:	H	H
4:	$S_1$	$S_5$
5:	$S_1$	$S_6$

Sweet diterpene glucoside

**Cussoracose C**

**13 times as sweet as sucrose (0.1% yield w/w)**

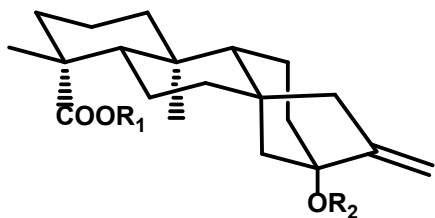
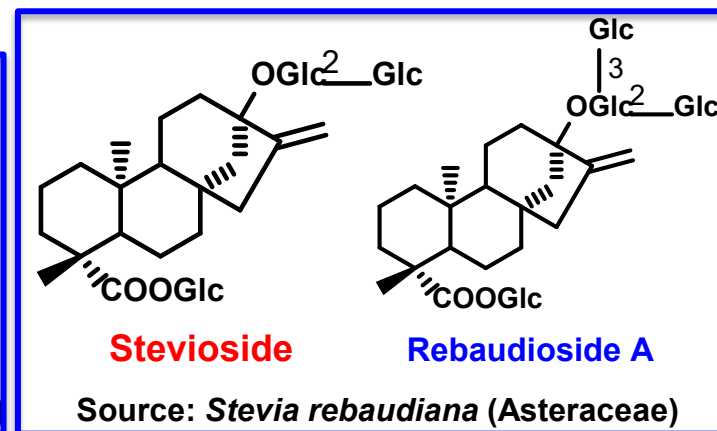
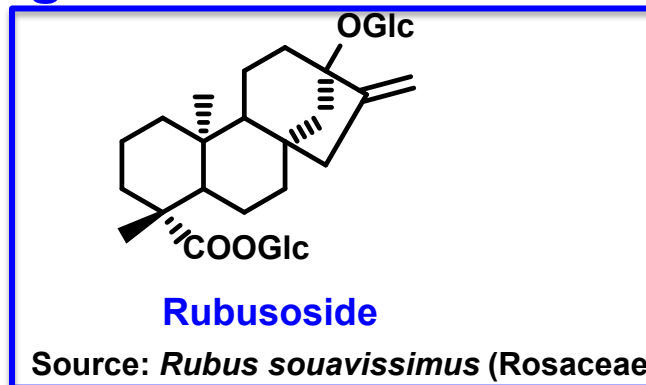
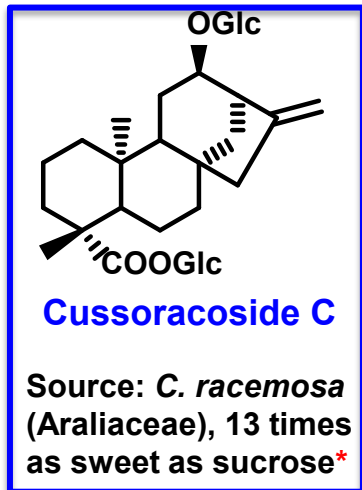
*\*Sweetness relative to sucrose, based on weight*







## Sweet *ent*-kaurene glucosides



Glycoside	R <sub>1</sub>	R <sub>2</sub>	RS*
Stevioside	-Glc	-Glc-(2-1)-Glc	143
Rebaudioside A	-Glc	Glc-(2-1)-Glc \ (3-1)-Glc	242
Rebaudioside D	-Glc-(2-1)-Glc	Glc-(2-1)-Glc \ (3-1)-Glc	221
Rebaudioside E	-Glc-(2-1)-Glc	-Glc-(2-1)-Glc	174
Rubusoside	-Glc	-Glc	114
Cussoracoside C			13



## Natural product compounds have many applications

Knowing the chemical landscape of natural products helps to build new research topics.

### How?

Untargeted metabolomics and/or isolation and structure elucidation of secondary metabolites.



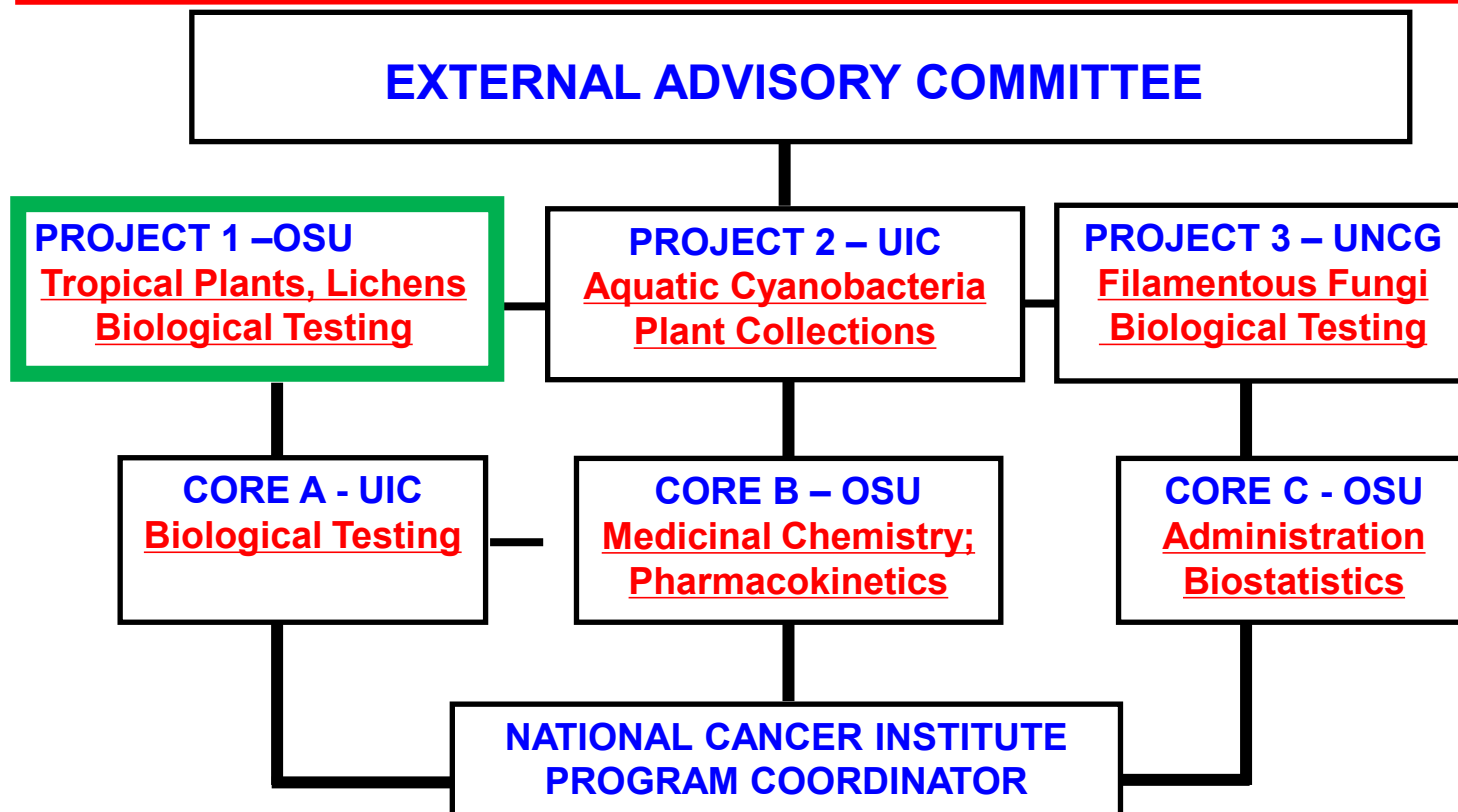
Identification of possible hit compounds: Screening or use of databases and published research data. Then validation



Medicinal chemistry and bioengineering studies to obtain lead compounds



# P01 PROJECT CA125066 - A MULTIDISCIPLINARY AND MULTI-INSTITUTIONAL APPROACH (2007-2025)



**3P01 CA125066-09S1 (10/2017~ 04/2019):**

**NEW SOURCES OF ANTICANCER DRUGS: ENDEMIC COASTAL MACROLICHENS  
AND THEIR ASCOMYCETES AND BASIDIOMYCETES MYCOBIONTS**



## DRUG DISCOVERY AND DEVELOPMENT TEAM



**“Discovery of Anticancer Agents of Diverse Natural Origin”  
(NCI/NIH – P01CA125066; Program Project)**

**Serves as a multi-institutional discovery and development platform for natural products**

**Project 1: Douglas Kinghorn, OSU (plants/lichens)**

**Project 2: Jimmy Orjala, UIC (cyanobacteria)**

**Project 3: Nicholas Oberlies, UNC-G (fungi)**

**Core 1: Joanna Burdette, UIC (biological assays)**

**Core 2: James Fuchs, OSU (Med. Chem./PK)**

**Core A: Administration/Biostatistics, Douglas Kinghorn, OSU**

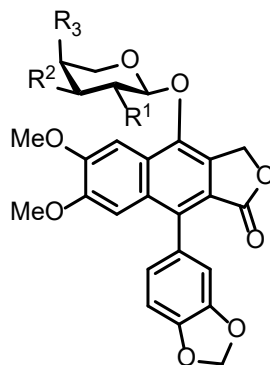
**Combines expertise in natural products isolation, cancer biology, *in vitro* and *in vivo* bioassays, chemical synthesis, and pharmacokinetics.**



# PHYLLANTHUSMIN LIGNANS (INITIAL PHYTOCHEMICAL ISOLATION) (UIC/OSU)



Photo by D.D. Soejarto



Dr. Doel Soejarto, UIC



Dr. Yulin Ren, OSU

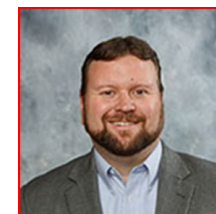
- *Phyllanthus poilanei* (Phyllanthaceae) samples were collected in Vietnam by **Dr. Doel Soejarto** (UIC).
- Using a bioassay-guided fractionation approach (HT-29 colon carcinoma cells), **Dr. Yulin Ren** (OSU) isolated two new and four known aryl-naphthalene (phyllanthusmin) lignan lactones from the chloroform-soluble extract (general structure shown above).
- Phyllanthusmin D (new;  $R_1 = \text{OH}$ ;  $R_2 = R_3 = \text{OAc}$ ) exhibited micromolar activity against HT-29 human colon cancer cells.
- Isolated phyllanthusmin D was active in an *in vivo* hollow fiber assay (with immunodeficient NCr *nu/nu* mice; 10-20 mg/kg ip) (UIC).

(Ren et al., *J. Nat. Prod.* 77, 1494, 2014)

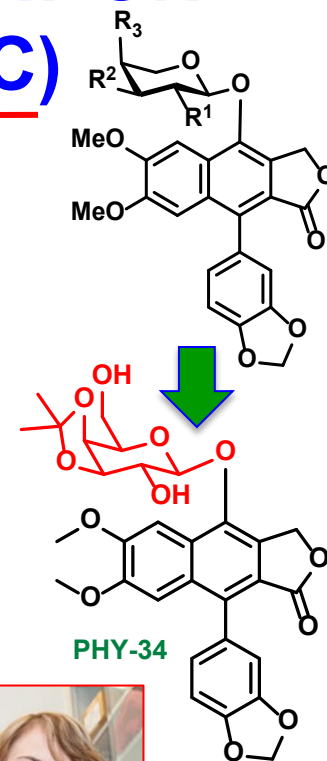


# PHYLLANTHUSMIN LIGNANS (OPTIMIZATION BY CHEMICAL SYNTHESIS; OSU/UIC)

- A chemical synthesis program to generate phyllanthusmin derivatives with favorable biological and physicochemical properties was conducted (Dr. James Fuchs; OSU).
- A key chemically synthesized lead compound, **PHY-34**, was found to be much more potently cytotoxic than phyllanthusmin D [**IC<sub>50</sub> values of 43, 4, and 4 nM for the HT-29 (colon), OVCAR3 (ovarian) and OVCAR8 (ovarian) cell lines, respectively**].
- In a biological follow-up study conducted at UIC (Dr. Joanna Burdette), PHY-34 was found to act as a late-stage autophagy inhibitor, and to have significant antitumor efficacy as a single agent against high-grade serous ovarian cancer *in vivo*.



Dr. James Fuchs, OSU



Dr. Joanna Burdette, UIC

(Woodard *et al.*, *Bioorg. Med. Chem.* 26, 2354, 2018;  
Young *et al.*, *Mol. Cancer Ther.* 17, 2123, 2018)

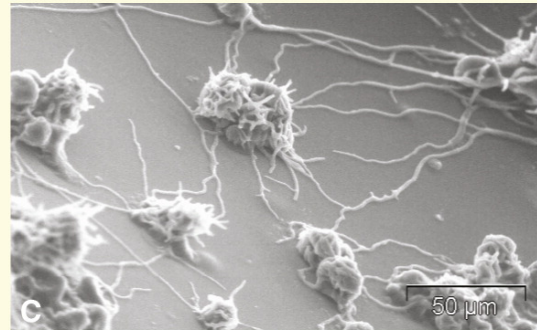


# Lichens and their mycobionts for cytotoxic compounds

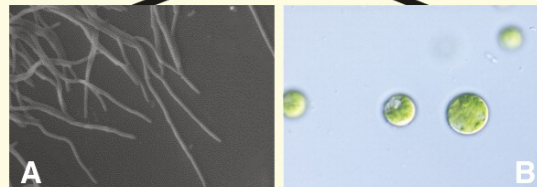
Rakotondraibe Lab



(D) Mature lichen in nature resulting from the association



(C) *Cladonia grayi* growing with *Asterochloris* sp. in culture clumps of algal cells overgrown by branching mycobiont and connected by mycobiont hyphae of *Cladonia grayi* with *Asterochloris* sp. (photo: Stephen Sharnoff).



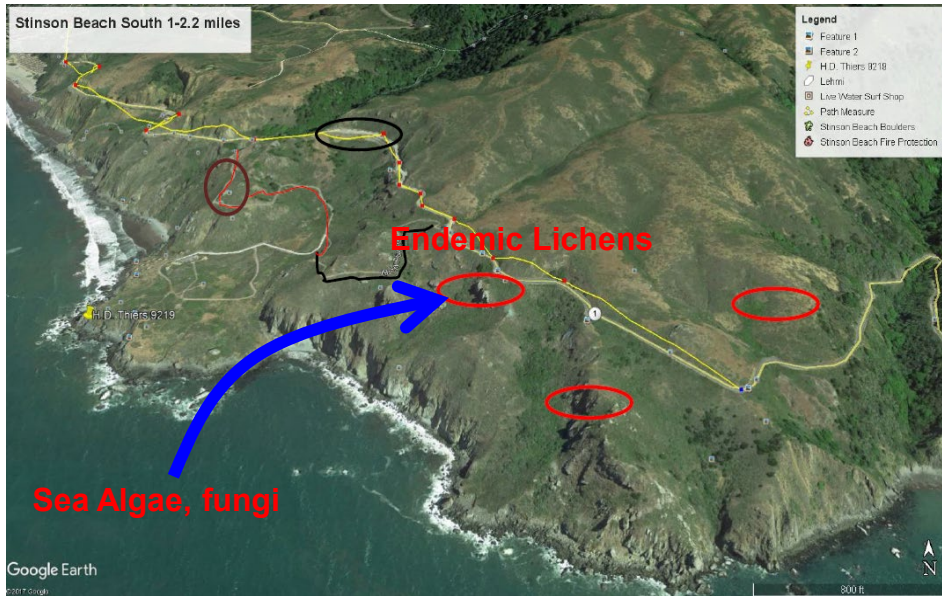
(A) Mycobiont *Cladonia grayi* growing separately in culture

(B) Unicellular photobiont *Asterochloris phycobiontica* growing separately in culture

Current Biology



# U.S. endemic lichens



Sea Algae, fungi

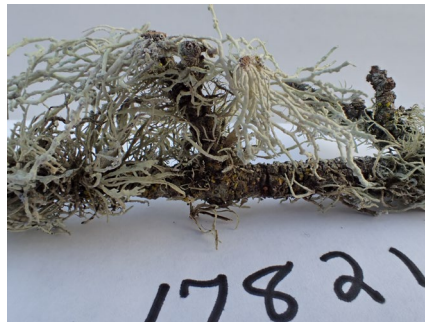
Endemic Lichens

 *Vermilacinia* species

 *Niebla* species

Collection map provided by Dr. R. Spjut

World Botanical Associates



## Pictures of lichens



Lichen species of the genus *Niebla*

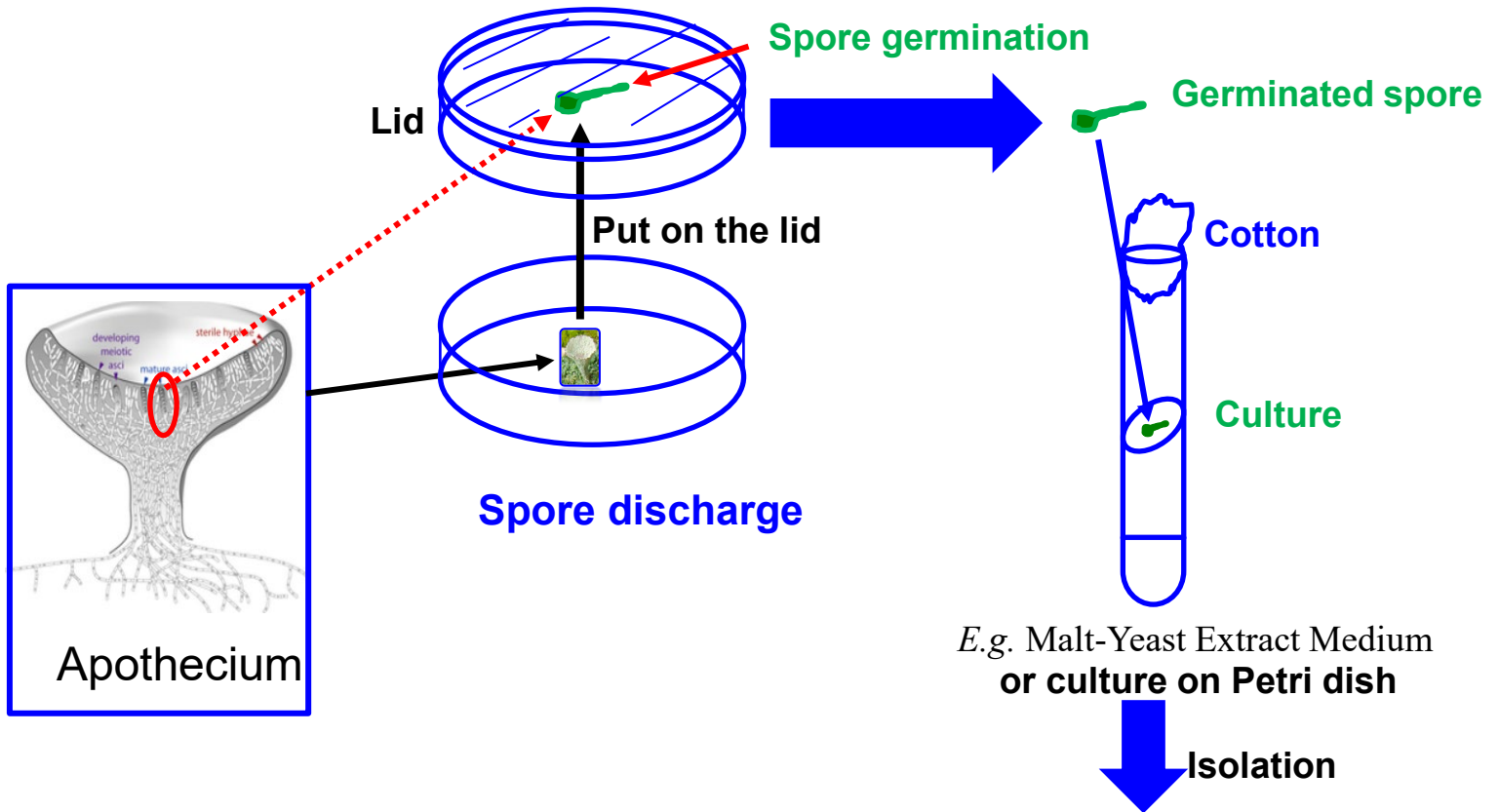




# Isolation of lichen mycobionts



Example of lichen

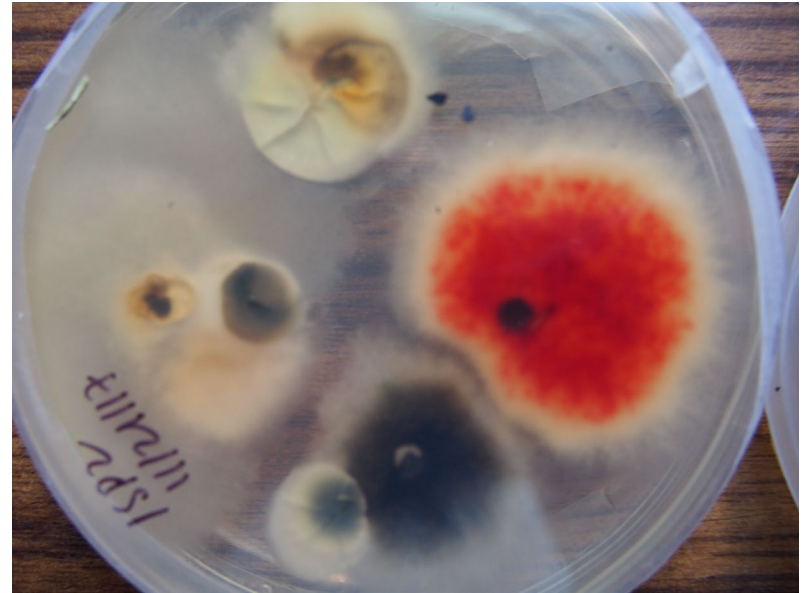


- **Library**
- **Bioassay, Taxonomical identification of active samples**
- **Dereplication, cytotoxicity-guided isolation**
- **Understanding the chemical landscape**

**Pure Ascomycetes and/or Basidiomycetes**



## Examples of lichen associated fungi obtained



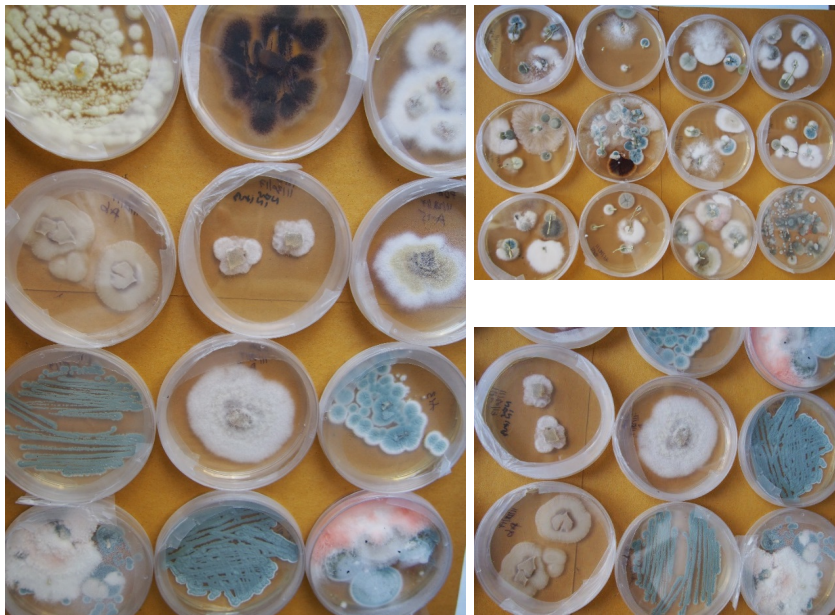


- 150 Lichen samples have been received from Dr. R. SPJUT (World botanical Associates)
- Different collections of the U.S. endemic *Niebla homalea* were selected for further investigation



*Niebla homalea* (Ramalinaceae)

Representatives of the Isolated fungi



Sample	A2780 <sup>a</sup> IC <sub>50</sub>	MCF-7 <sup>a</sup> IC <sub>50</sub>	HT-29 <sup>b</sup> Surv.	MDA-MB-231, <sup>b</sup> Surv.
Control	0.001 <sup>P</sup>	0.002 <sup>C</sup>	0.001	
RAK_A1	<0.16	<0.16	4	NT
RAK_A2_1	>20	18.5	NT	NT
RAK_A3	>20	18.1	NT	NT
RAK_A4	>20	>20	NT	NT
RAK_A5	2.9	3.1	<sup>b</sup> 61%	78%
RAK_A6	>20	17.3	NT	NT
RAK_A8	0.5	0.3	NT	NT
RAK_A9	14.7	>20	NT	NT
RAK_A15_RE	0.7	0.9	<sup>b</sup> 100%	100%
RAK_A16	2.2	1.8	68%	100%
RAK_A0	0.3	1.2	<sup>b</sup> 39%	36%
RAK_A17ISP2	19.4	8.2	NT	NT
RAK_AD	>20	17.6	NT	NT

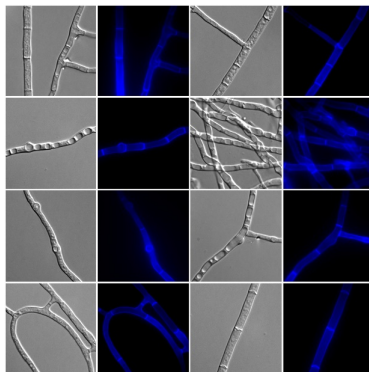
<sup>a</sup>IC<sub>50</sub> in µg/mL; <sup>P</sup>: Paclitaxel; <sup>C</sup>: Camptothecin; <sup>b</sup>: Survival at 20 µg/mL; NT: Not Tested

RAK\_A16 and RAK\_A0 were first selected



We focused our work on the bioassay-guided isolation of cytotoxic compounds of two fungal associates of the lichen *N. homalea*: **RAK-A16: *Penicillium aurantiacobrunneum*** and **RAK-A0: *Epicoccum nigrum***

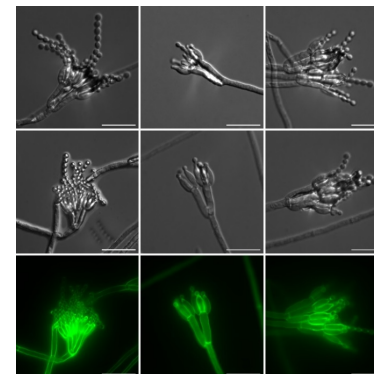
### *Epicoccum nigrum* (RAK\_AO)



**Conidophores**

**A2780: IC<sub>50</sub> 0.3 μg/mL**  
**MCF7: IC<sub>50</sub> 1.2 μg/mL**

### *Penicillium aurantiacobrunneum* (RAK\_A16)



**Conidophores**

**A2780: IC<sub>50</sub> 2.2 μg/mL**  
**MCF7: IC<sub>50</sub> 1.8 μg/mL**

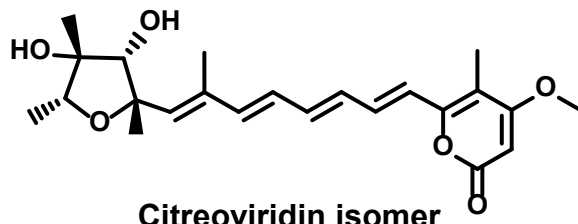


A total of 8 compounds, of which 6 are new and 2 are known have been isolated and identified from RAK-A16

Cultured on Potato  
Dextrose Agar



**$\alpha$ -pyrone polyene**

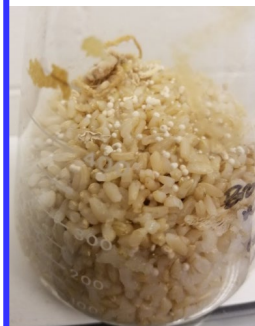


Citreoviridin isomer

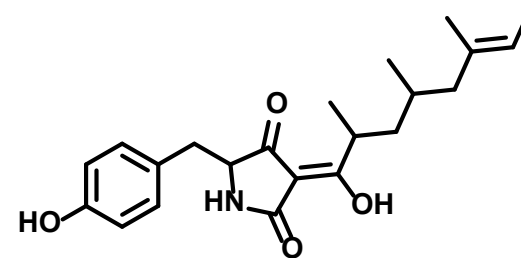
**A2780 MCF-7 HT-29 HeLa DU-145**  
IC<sub>50</sub> ( $\mu$ M): 5.7 4.2 >10 >10 >101.5

C.Y. Tan, Rakotondraibe et al. J. Nat. Prod. 2019, 82, 9, 2529–2536.

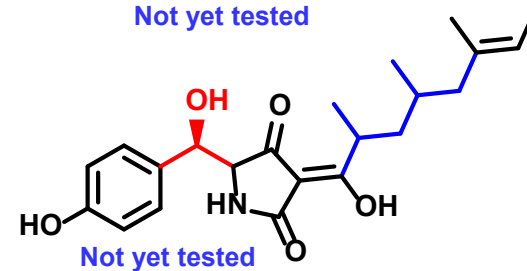
Cultured on  
Brown Rice



**Tetramic acids**

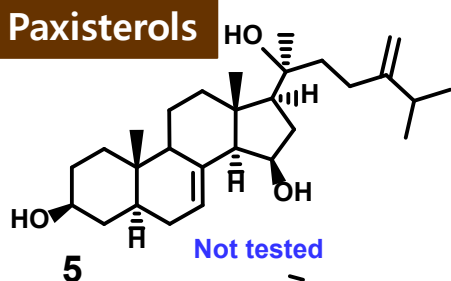


Not yet tested

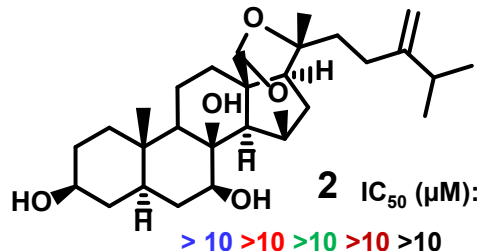


Not yet tested

**Paxisterols**

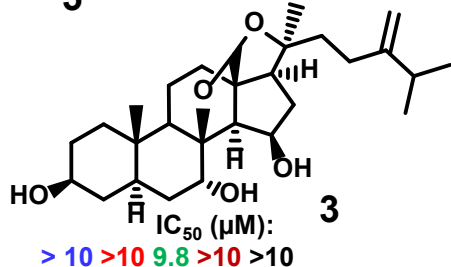


Not tested



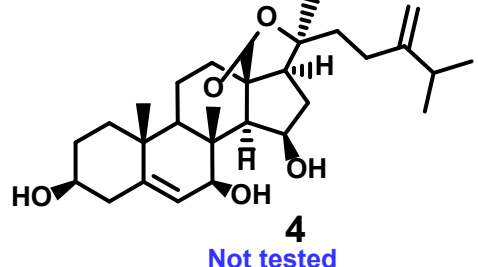
IC<sub>50</sub> ( $\mu$ M):

> 10 >10 >10 >10 >10



IC<sub>50</sub> ( $\mu$ M):

> 10 >10 9.8 >10 >10



Not tested

Cultured on  
MEM (Eagle)

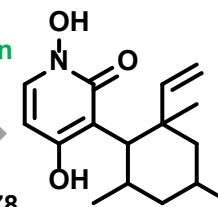


**Pyridone alkaloids**

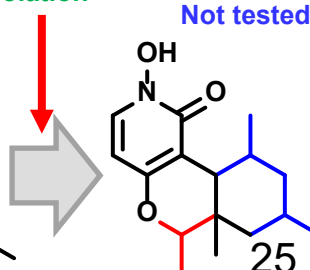
1D NMR dereplication  
Isolation

LC/MS  
dereplication

m/z 277.1678



8-Methyl-pyridoxatin



Not tested

N-hydroxy-2-pyridone

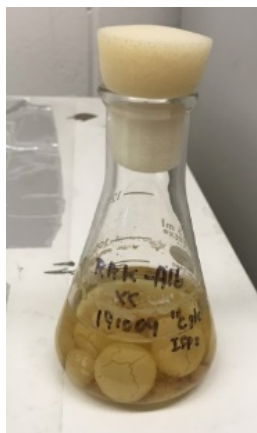
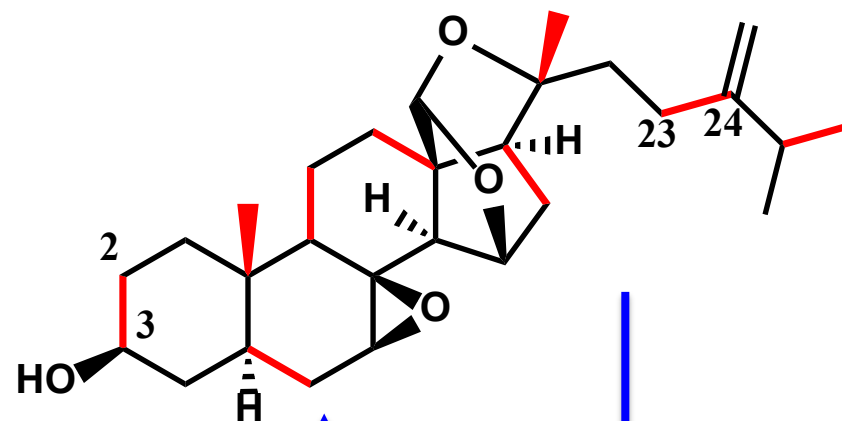
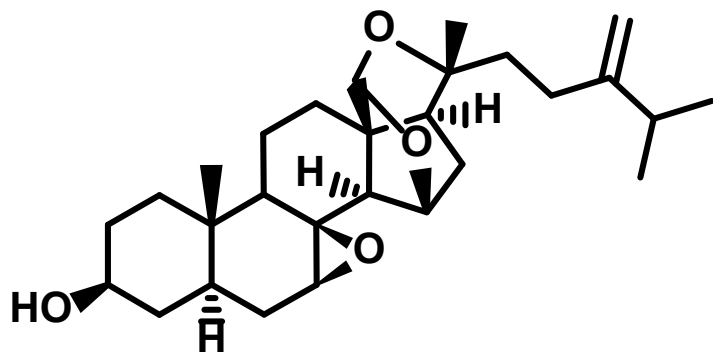


# Understanding the biosynthesis of *P. aurantiacobrunneum* (RAK-16) metabolites for production of bioactive compounds



Dr. Yoshi Yamano

Paxisterol has been isolated as major compound



Extracted with EtOAc  
Partitioned with EtOAc

EtOAc Extract

Isolation

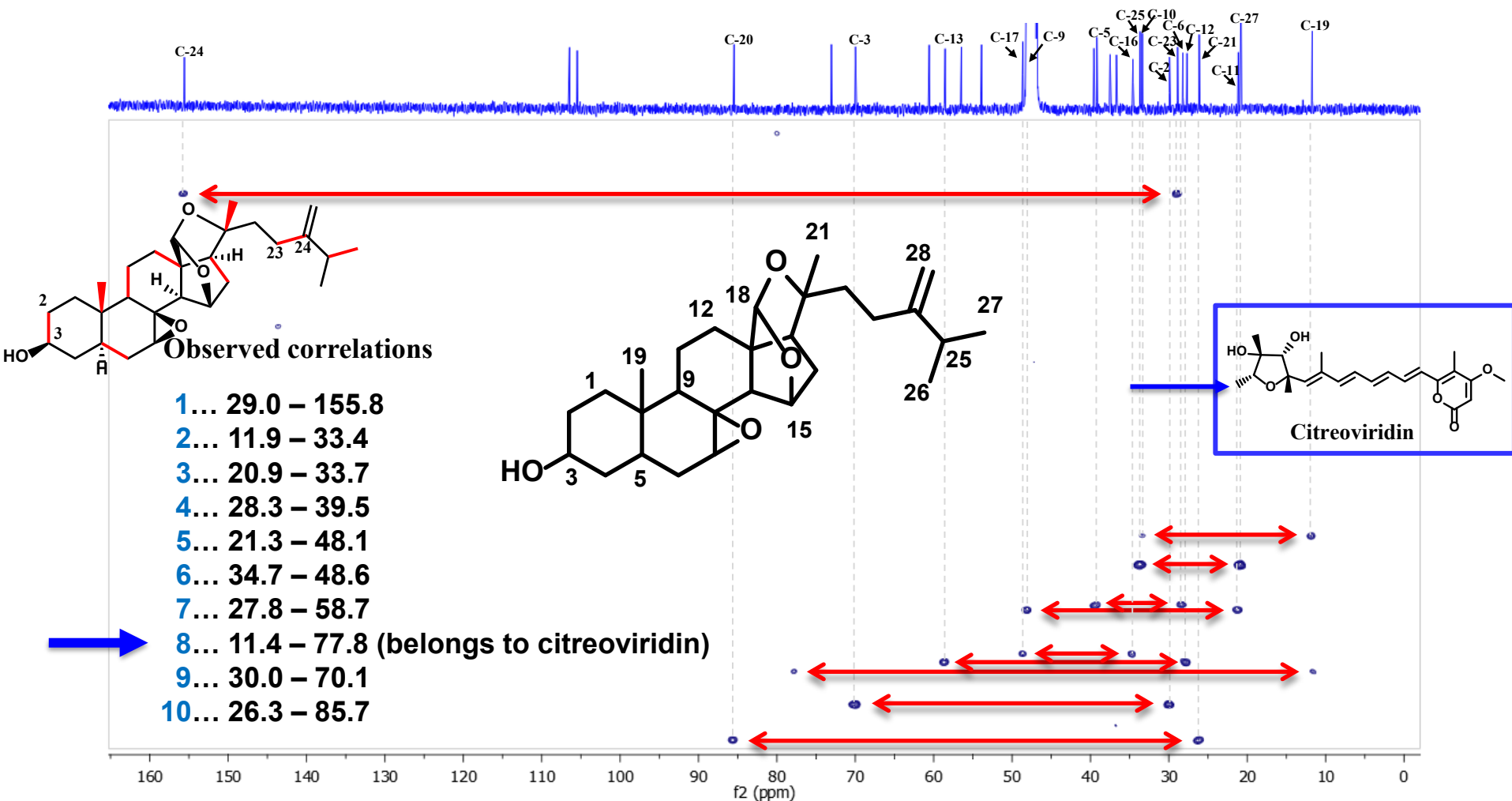
Labelled paxisterol

Confirmed with reported data

RAK-A16 in ISP2 with <sup>13</sup>C<sub>6</sub>-Glucose for 14 days

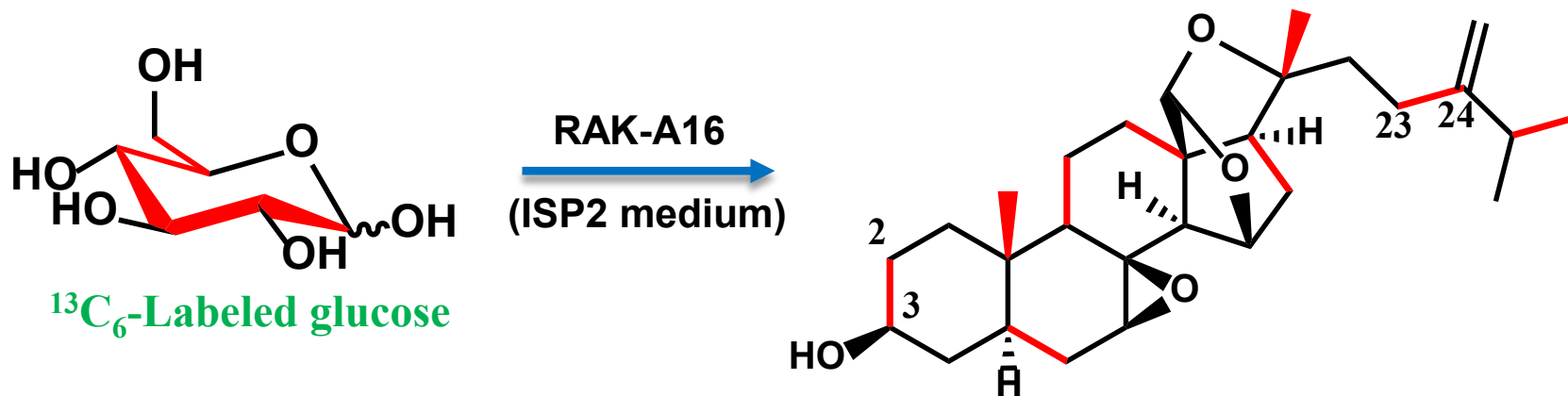


# INADEQUATE Spectrum of the Produced <sup>13</sup>C-labeled Paxisterol

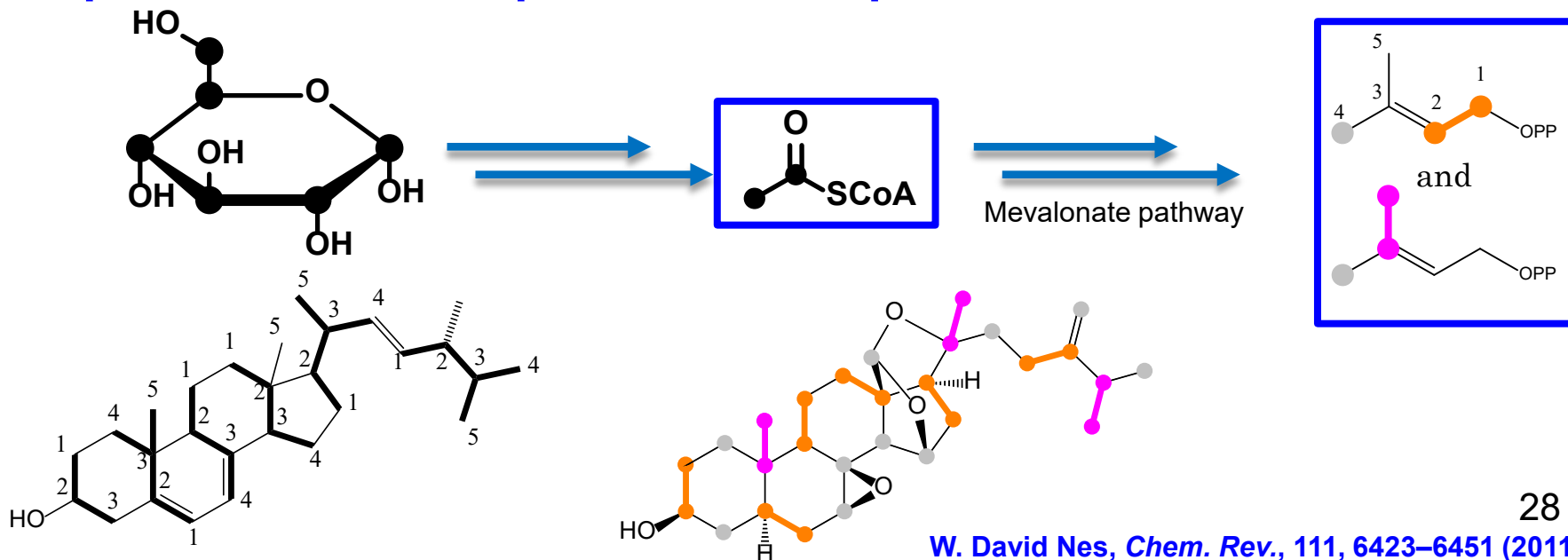




## $^{13}\text{C}$ -labeled Paxisterol from $^{13}\text{C}$ -labeled glucose

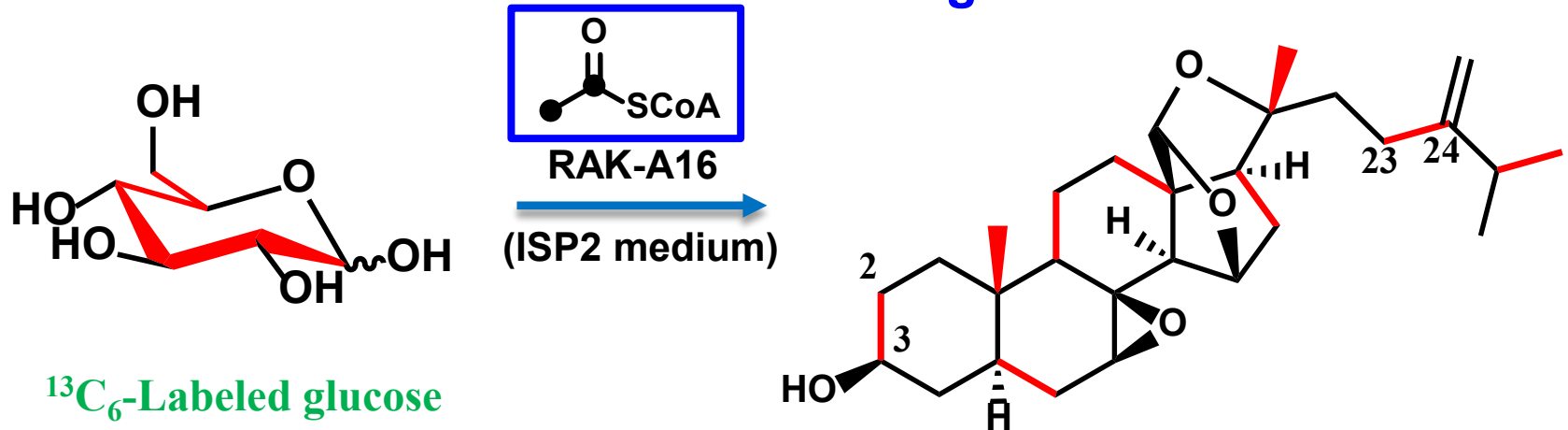


## Interpretation and comparison with reported data

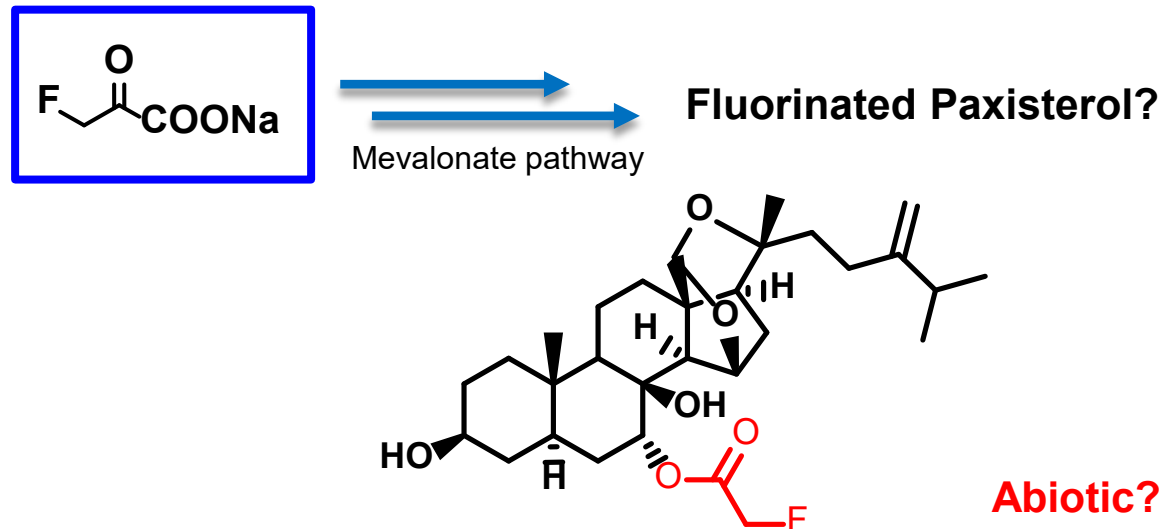




## $^{13}\text{C}$ -labeled Paxisterol from $^{13}\text{C}$ -labeled glucose



## Production of halogenated derivative(s)

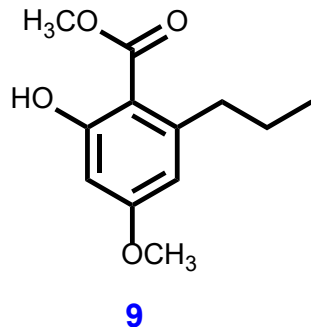
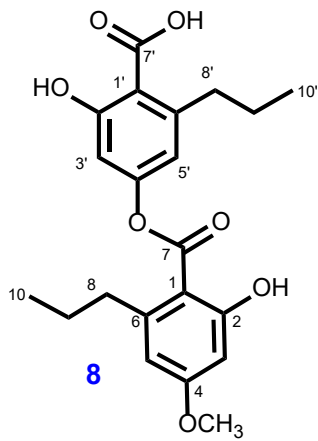
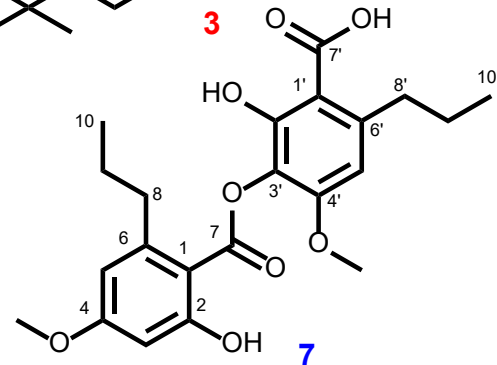
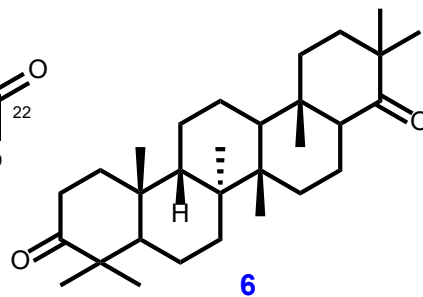
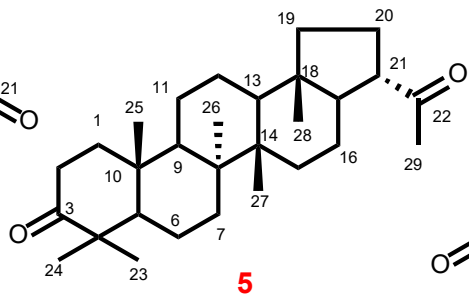
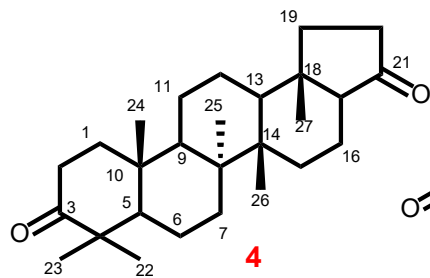
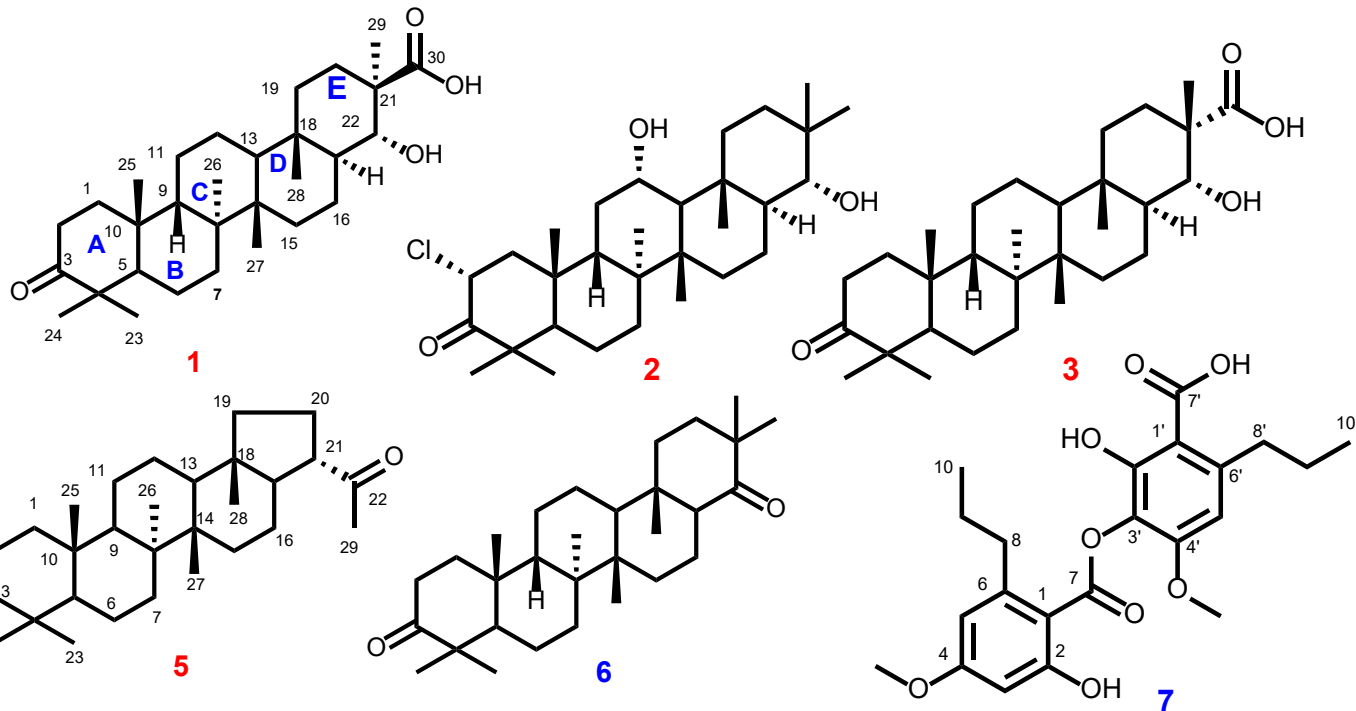




## New and Known Compounds from *Niebla homalea*



*Niebla homalea*  
(An U.S. endemic Lichen)



- Compound 2 showed weak antiproliferative activity against breast (MCF-7) and ovarian (A2780) cancer cell lines.
- Compound 3 is selective toward MDA-MB-231, triple negative breast cancer cell line.
- All compounds will be evaluated for activity against other cancer cells available in the program



Dr. Yan Zhang

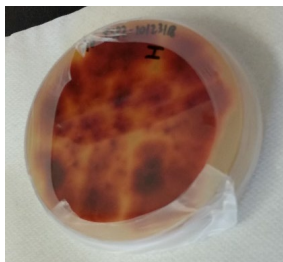


# Various Fermentations of *Epicoccum nigrum* (A0) and their cytotoxic activity

### A0 on ISP2 Agar



Top

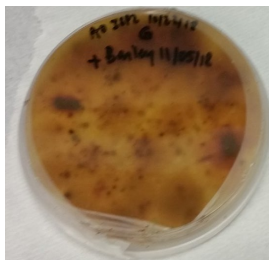


Bottom

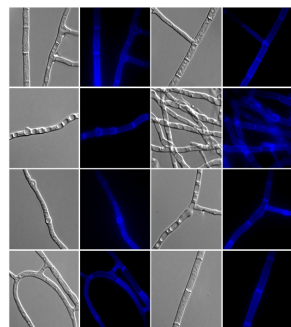
### A0 on ISP2 Agar + Barley



Top

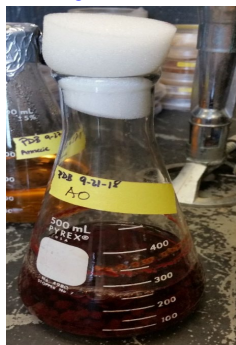


Bottom

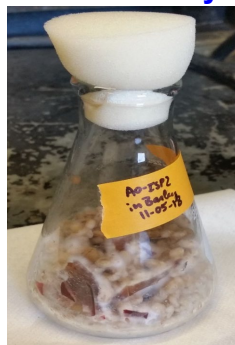


Conidophores

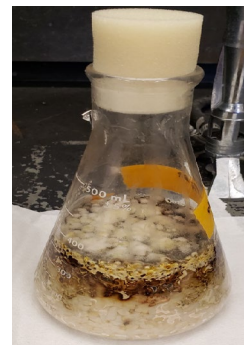
### A0 in PDB



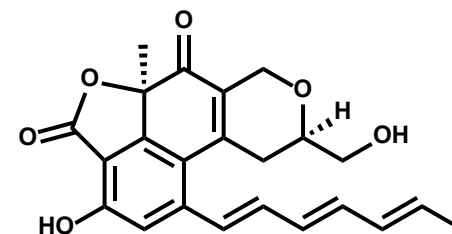
### A0 on Barley



### A0 on Brown Rice



Extracts	IC <sub>50</sub> (µg/mL)	
	A2780	MCF-7
A0-PDB-092118-7d-EA	> 20	NT
A0-PDB-092118-7d-W	> 20	NT
<b>A0-ISP2-101118_7d-EA</b>	3.0	5.3
<b>A0-ISP2-110518_9d-EA</b>	1.9	1.4
A0-ISP2-110518_9d-M	> 20	> 20
A0-ISP2-broth-101618-7d-EA	> 20	> 20
A0-Barley-110518-8d	> 20	> 20
<b>A0-ISP2+Barley-110518-9d-EA</b>	13.4	13.2
A0-ISP2+Barley-110518-9d-M	> 20	> 20
A0-BrownRice-031419-11d-EA	> 20	> 20
Paclitaxel (control)	0.005	
4-hydroxytamoxifen (control)		7.8



**Acetosellin**  
**A0-ISP2-101118\_7d-EA** <sup>31</sup>



## SUMMARY

- **New and cytotoxic compounds have been isolated from the lichen *Niebla homalea* and its fungal associates.**
- **Understanding the chemical landscape of natural products can lead to new topics in natural product research.**
- **Supplementation of modified (halogenated) precursors in fungal cultures led to the production of new and/or bioactive compounds.**
- **Dereplication methods (quick identification of known and promiscuous compounds) are needed to lead the discovery of new bioactive compounds.**



# Acknowledgments



## Collaborators:

- Dr. Richard Spjut (World Botanical Associates, Bakersfield, CA)
- Dr. Chad Rappleye (Department of Microbiology, OSU)
- Dr. Joanna E. Burdette (UIC, Medicinal Chemistry and Pharmacognosy)
- Dr. Nicholas Oberlies (UNC Greensboro, NC)
- Dr. A. Douglas Kinghorn (OSU, College of Pharmacy)
- Dr. Doel Soejarto (UIC, Medicinal Chemistry and Pharmacognosy)

## Lab members:

- Dr. Anecie Benatrehina
- Dr. Yan Zhang
- Dr. Dahai He
- Dr. Preston Manwill
- Dr. Choon Yong Tan

**PROGRAM PROJECT:** 5P01 CA125066-10

**Diversity Supplement:** 3P01CA125066-10S1

• **The American Cancer Society:** Institutional Research Grant  
#IRG – 67-003-47

• **The PHPID New Investigator Grant**



**NIH NATIONAL CANCER INSTITUTE**

• **The NIH/NIAID R21: 1R21AI129951-01**  
**NIH R13AT010425 (NCCIH) for travel support**





- 2003:** PhD from Hiroshima University, School of Medicine,  
Faculty of Pharmaceutical Sciences (JAPAN)
- 2003-2007:** Postdoctoral research fellow working on the phytochemical  
investigation and biological activities of Medicinal  
plants and liverworts (Tokushima Bunri University, JAPAN)
- 2007-2009:** Assistant Professor at Hiroshima University (JAPAN),  
Graduate School of Biomedical Sciences
- 2009-2013:** Senior Research Scientist at Virginia Tech, Chemistry  
Department (ICBG project)
- 2013-2019:** College of Pharmacy, Div. Med. Chem. & Pharmacognosy  
Assistant Professor, The Ohio State University
- 2019-Present:** College of Pharmacy, Div. Med. Chem. & Pharmacognosy  
Associate Professor (**with tenure**), The Ohio State University



## **Building a Research Team to Challenge**

### **Forming the Team**

What do I want? Get advices from Mentors and Colleagues

Previous experience (who can achieve the task?)

Understand and use the system to get help (mentoring classes,...)

Take the responsibility

### **Storming**

Caring and motivating

Mission must be communicated very clearly

### **Norming**

Creation of internal (lab/group) rules

### **Performing**

Periodic group and/or individual meeting

### **Self and Peer-Review Evaluations**

Always ask yourself and your peers for evaluations



# QUESTIONS?

