

Introduction to the NIH Grants System and NCI's Division of Cancer Biology

Christine Nadeau, Ph.D.

Program Director

NCI/NIH

Overview of the NCI

- The federal government's principal agency for cancer research and training
- Created by the National Cancer Act in 1937
- One of 27 Institutes and Centers at the NIH
 - 3 of these do not have funding authority including the Center for Scientific Review
- NCI has over 3,500 full-time staff with diverse roles and activities
- \$400,000 budget in 1938; \$7.22 billion budget in FY24
- NCI has 24 Extramural Divisions/Offices/Centers, 1 Intramural Division, 1 Intramural Center, and 10 Advisory Boards and Groups
- Primarily located in Bethesda, Rockville, and Frederick, MD



NCI Mission

- The National Cancer Institute leads, conducts, and supports cancer research across the nation to advance scientific knowledge and help all people live longer, healthier lives.
- NCI manages a broad range of research, training, and information dissemination activities that reach across the entire country, meeting the needs of all demographics – rich and poor, urban and rural, and all racial/ethnic populations.

<https://www.cancer.gov/about-nci/overview#mission-statement>

Cancer Research Continuum



Organization of the National Cancer Institute



Director
W. Kimryn Rathmell, MD,
PhD

National Cancer Institute
FY2024 budget: \$7.2 Billion

NCI Office of the Director

- Strategic planning and direction
- Budget and administration
- **Program evaluation**
- Special Programs

Advisory Boards and Groups

- Scientific guidance
- Approval of funding
- Program evaluation

Extramural Program

- Manages grant funds
- Develops new programs
- Portfolio analysis
- Peer review

Intramural Program

- Laboratory studies
- Clinical studies

Organization of the National Cancer Institute (cont'd)

Intramural Research (~17% budget)

CENTER FOR
CANCER
RESEARCH (CCR)

DIVISION OF
CANCER
EPIDEMIOLOGY
AND GENETICS
(DCEG)

- The [NCI Intramural Program](#) includes the [DCEG](#) and the [CCR](#).
- The DCEG conducts population-based research focused on the genetic and environmental determinants of cancer, as well as cancer prevention and control.
- The CCR, consisting of more than 50 branches and laboratories, performs basic, translational, and clinical research in cancer and AIDS.

Organization of the National Cancer Institute: Extramural Programs

Extramural Programs
(~75% budget, ~7000 grants)

**DIVISION OF
CANCER
BIOLOGY (DCB)**

**DIVISION OF
CANCER
TREATMENT
AND DIAGNOSIS
(DCTD)**

**DIVISION OF
CANCER
PREVENTION
(DCP)**

**DIVISION OF
CANCER
CONTROL AND
POPULATION
SCIENCES(DCCPS)**

**DIVISION OF
EXTRAMURAL
ACTIVITIES (DEA)**

**DCB (~2000
grants)**

- The [NCI Extramural Program](#) consists of five divisions. Four of these divisions coordinate grant activities in [cancer biology](#), [cancer control and population sciences](#), [cancer prevention](#), and [cancer treatment and diagnosis](#).
- The DEA manages the peer review process and provides support for funding opportunity development and portfolio analysis.

Division of Cancer Biology



Office of the Director

Director:
Daniel Gallahan, Ph.D.
Deputy Director:
Shannon Hughes, Ph.D.



Cancer Cell Biology Branch

Chief:
Rihab Yassin, Ph.D.

Cancer Immunology, Hematology and Etiology Branch

Chief:
Kevin Howcroft, Ph.D.

DNA and Chromosome Aberrations Branch

Chief:
Ian Fingerman, Ph.D.

Structural Biology and Molecular Applications Branch

Chief:
Jennifer Couch, Ph.D.

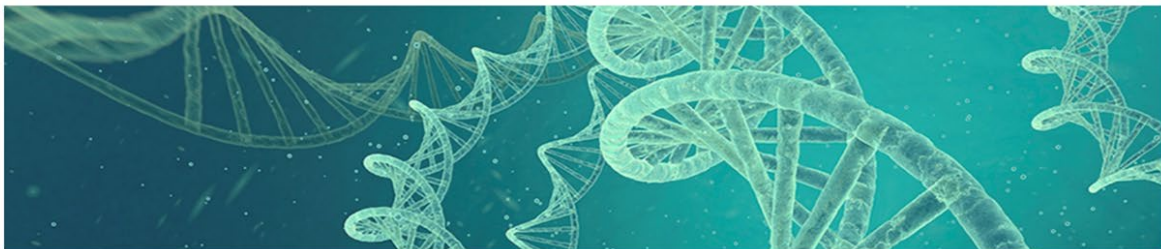
Tumor Biology and Microenvironment Branch

Chief:
Jeffrey Hildesheim, Ph.D.

Tumor Metastasis Branch

Chief:
Joanna Watson, Ph.D.

- DCB
- Research Portfolio >
- Research Programs >
- Funding >
- Researcher Resources
- News & Events >
- About DCB >
- Progress >



Division of Cancer Biology

The Division of Cancer Biology (DCB) supports basic research in all areas of cancer biology at academic institutions and research foundations across the United States. As part of the National Cancer Institute, DCB provides funding for research that investigates the basic biology behind cancer.

Research in the field of basic cancer biology focuses on the mechanisms that underlie fundamental processes such as cell growth, the transformation of normal cells to cancer cells, and the spread, or metastasis, of cancer cells. This research provides the building blocks to new treatments, clinical trials, and improved understanding of the disease. Basic research has enabled much of the progress made over the years in the search for a cure for cancer.

Connect with DCB

- [Twitter: @NCICancerBio](#)
- [LinkedIn: NCI Division of Cancer Biology](#)
- [Subscribe to News from DCB](#)

Cancer.gov/dcb



DCB

[Research Portfolio](#) >

[Research Programs](#) >

[Funding](#) >

[Researcher Resources](#)

[News & Events](#) >

About DCB

[Contact & Staff](#)

[Progress](#) >

Contact the Division of Cancer Biology

Division of Cancer Biology
9609 Medical Center Drive MSC 9747/9748
Bethesda, MD 20892

[Follow DCB on Twitter](#) 

ON THIS PAGE

- [Office of the Director](#)
- [Cancer Cell Biology Branch](#)
- [Cancer Immunology, Hematology, and Etiology Branch](#)
- [DNA and Chromosome Aberrations Branch](#)
- [Biophysics, Bioengineering, and Computational Sciences Branch](#)
- [Tumor Biology and Microenvironment Branch](#)
- [Tumor Metastasis Branch](#)
- [Administrative Resource Center](#)



<https://www.cancer.gov/about-nci/organization/dcb/about/contact>

Tumor Metastasis Branch

The Tumor Metastasis Branch plans, develops and directs the Division's research program in tumor metastasis, focusing on mechanisms of metastasis and metastatic niches, circulating tumor cells, dormancy, and angiogenesis and vasculogenesis.

More information on research supported by this branch is available in the [Research section](#).

Phone: (240) 276-6220

Fax: (240) 276-7866

Name & Position	Email	Areas of Expertise
Joanna Watson, Ph.D. <i>Chief</i>	watsonjo@mail.nih.gov	Circadian rhythms, cancer cachexia, circulating tumor cell biology, and mechanisms of metastasis
Grace Ault, Ph.D. <i>Program Director</i>	aultg@mail.nih.gov	Cell invasion and migration, epithelial-mesenchymal transition, metabolic adaptation to the microenvironment, and growth factor signaling
Justin Benavidez, Ph.D. <i>Program Director</i>	justin.benavidez@nih.gov	Biological sciences, developmental biology, and cancer metastasis
Brunilde Gril, Ph.D. <i>Program Director</i>	grilbrun@mail.nih.gov	Brain metastases, blood-brain/tumor barrier, experimental therapies for metastasis, and receptor tyrosine kinase signaling
Christine Nadeau, Ph.D. <i>Program Director</i>	christine.nadeau@nih.gov	Mammalian models of cancer, Notch signaling, breast cancer, and systemic immunity
Elizabeth Snyderwine, Ph.D. <i>Program Director</i>	snyderwe@mail.nih.gov	Xenobiotic and cellular metabolism, metastasis, aging biology, and the bone microenvironment

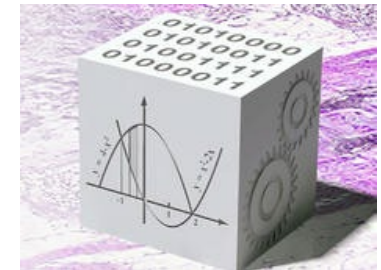
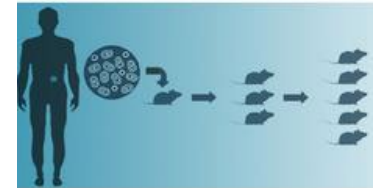
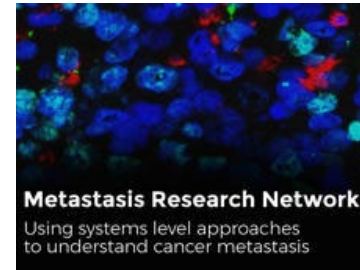
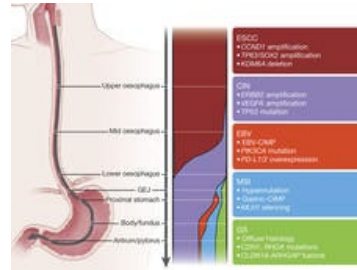
Talk to your program director!

Session 1:
Communicating
with your
program
director



Yvonne Douglas-Tabor
Program Associate Director

DCB Supported Research Programs



DCB

Research Portfolio >

Research Programs >

Funding

Funding Opportunities

Funding Resources

Researcher Resources

News & Events >

About DCB >

Progress >



DCB Funding Opportunities

Notices of Funding Opportunities (NOFOs)

Title	Announcement Number	Opening Date	Expiration Date	Activity Code
Notice of Special Interest (NOSI): Exploratory Cancer Immunology Projects and Technologies (ExCITE)	NOT-CA-24-016	12/05/2023	11/17/2026	R21
Notice of Request for Information (RFI) to Facilitate Cancer Systems immunology Research	NOT-CA-24-003	11/06/2023	02/29/2024	N/A
Notice of Special Interest (NOSI): Research Projects to Develop Oncoaging Models for Cancer Research	NOT-CA-23-092	10/16/2023	07/31/2027	N/A
Notice of Special Interest (NOSI): Mechanisms Driving Obesity and Prostate Cancer Risk	NOT-CA-23-089	08/31/2023	09/08/2024	N/A
Research Projects to Enhance Applicability of Mammalian Models for Translational Research (R01 Clinical Trial Not Allowed)	PAR-23-281	09/05/2023	09/08/2026	R01



Eric Johnson Chavarria, PhD
Program Director



NCI and DCB Supported Resources

- DCB supports a variety of resources that are available to scientists studying cancer to aid in research.

Session 2:
DCB/NCI
Research
Resources



Stefan Maas, PhD
Program Director

- NCI also provides support for pursuing a successful research enterprise including help with trainees

Session 2:
Awards to
support
trainees



Chantel Fuqua, PhD
Diversity Training Branch

- NCI is dedicated to building upon the critical impact sharing data has on accelerating treatment for cancer



Soumya Korrapati, PhD
Scientific Policy Analyst

Session 2:
Data
Management
and Sharing

Application Life Cycle

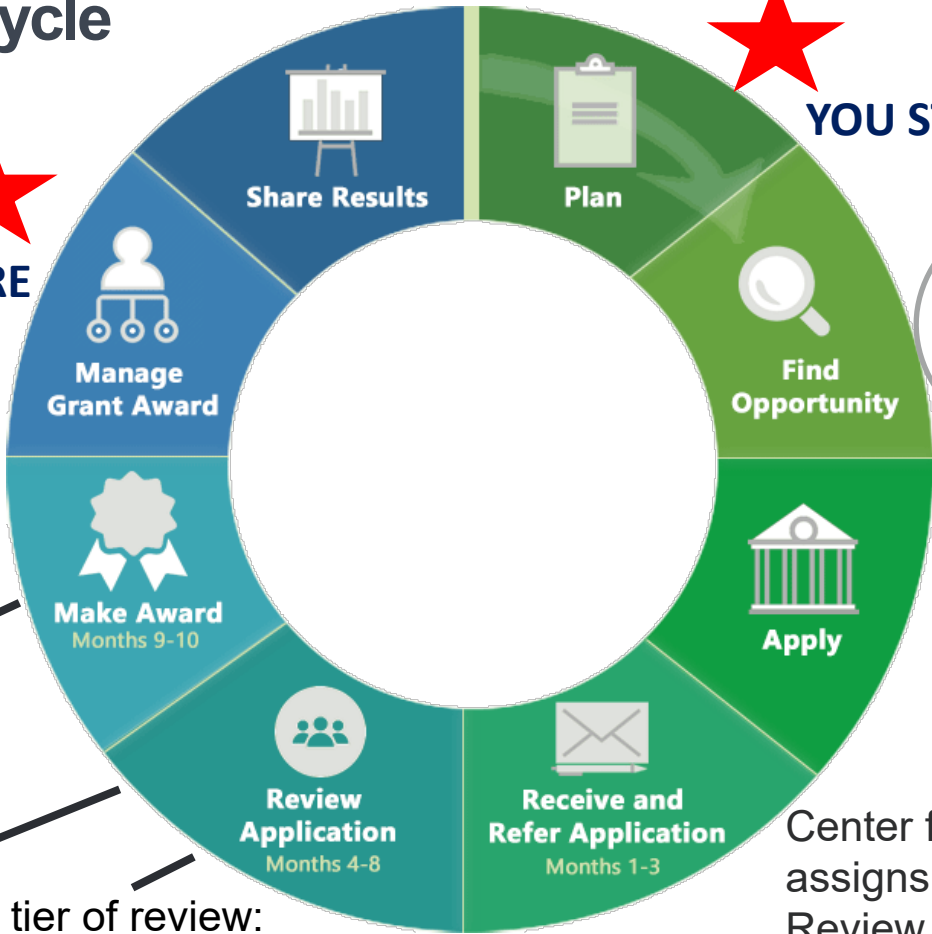
Session 1:
Grant
Funding
Mallory
Shramek



Administrative review by
Program & Grants
Management Staff

2nd tier of review:
Advisory Board/Council
Institute Director

**YOU ARE
HERE**



YOU STARTED HERE!

Session 2:
The Review
Process
Jessica
Smith, PhD



Center for Scientific Review
assigns application to a
Review Group and an NIH
Institute

1st tier of review:
Study Section

Objectives of this Workshop

- Gain a deeper understanding of the roles of the extramural staff
- Understand your responsibilities as an NCI funded investigator
- Gain insight into the review and renewal grant processes
- Ways to promote your science and participate in outreach activities
- Meet your peers in Round Table Discussions
- Meet your program directors and grants administration staff.



Thank You



**NATIONAL
CANCER
INSTITUTE**

[cancer.gov](https://www.cancer.gov)

[cancer.gov/espanol](https://www.cancer.gov/espanol)